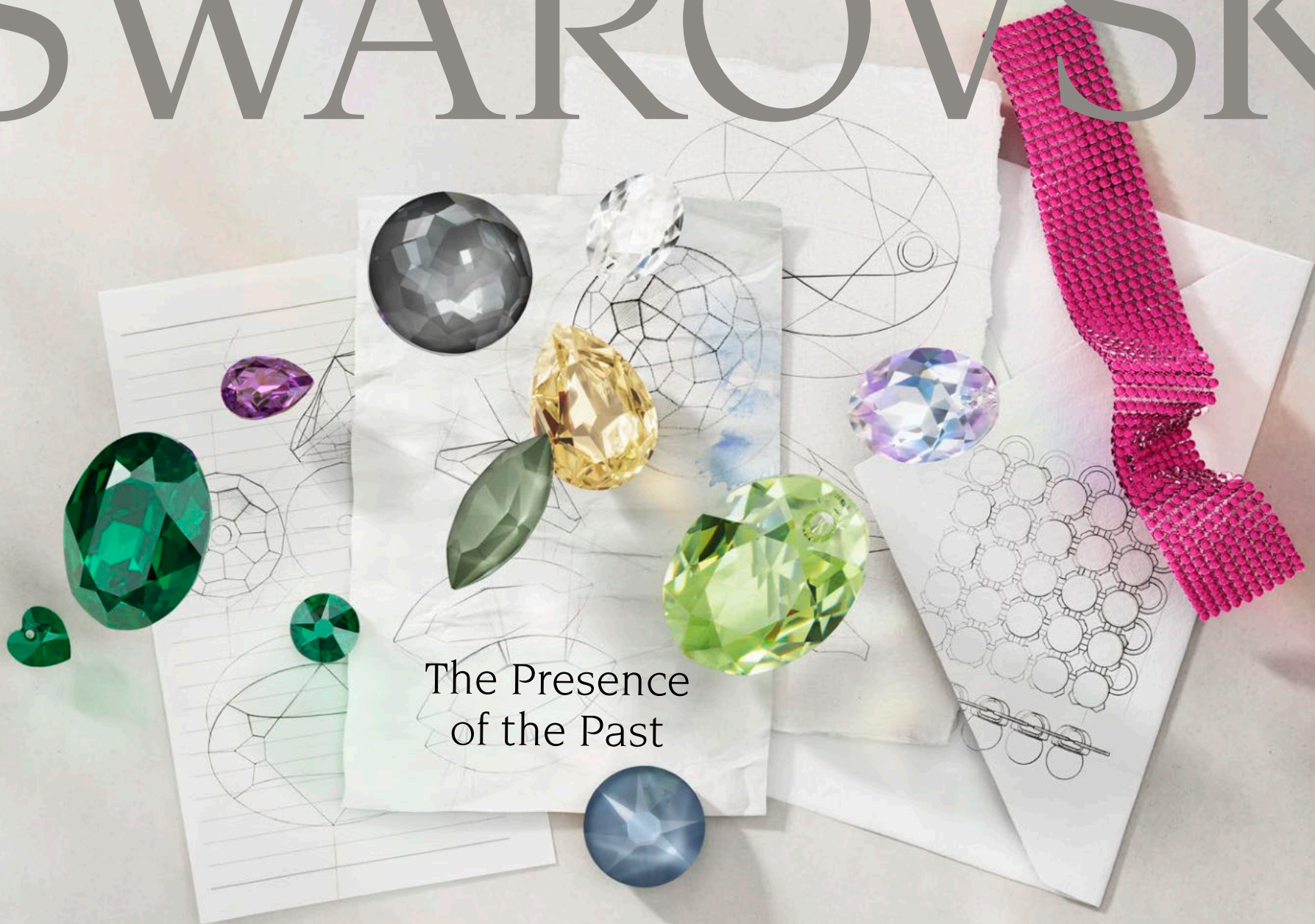


# SWAROVSKI



The Presence  
of the Past

# The Presence of the Past

With a focus on history, heritage, and wardrobe key pieces, Classics Interrupted heralds the return of a reduced sense of style. A permanence embodies designs that play with tradition, perfectly encapsulated in the re-interpretation of a timeless shape in the mesmerizing Mirage Pear Fancy Stone. Echoing a sense of preciousness the heightened emerald depth of Majestic Green is a hue for eternity.

Myths and memories are what we have always employed to make sense of the world. Mystical Creatures embraces the dark desire of mermaids; the sirens of the sea. Shimmering with an oceanic feel, Crystal Denim, Agave and Dark Grey Ignite introduce the swirling depths of water into mesmerizing designs, with the extended Drop Sew-on Stone sizes used to create undulating tales of fantasy.

A nod to nature, and the need to reconnect with our roots has become paramount. Bohemian Wilderness is a tribute to folkloric savoir-faire, and the arts and crafts of our ancient

forbears. Introducing a sense of permanence and versatility, the Elliptic Cut Pendant crafts designs of pure harmony, while the brilliant textural tactility of Crystal Fine Rocks Colorful Mixtures imparts a sense of deep slowness, and earthly connection.

Lensed through a nostalgic vision of beauty, Vintage Elegance is firmly back into the spotlight with refined pieces, and put-together looks taken directly from the cinematic format of Film Noir. With its velvety sheen, Crystal Caviar Mesh introduces a new take on grown-up glamour, as the high-voltage hedonism of Crystal Electric Blue, Pink, and White Ignite introduces a modern edge.

This season it is time to return to the innocence, acceptance, beauty, and glamour of bygone years.

Welcome to Fall/Winter 2024/25.



Explore Online





4  
Classics  
Interrupted

**New Color**  
Majestic Green

**New Cut**  
Mirage Pear Fancy Stone



25  
Bohemian  
Wilderness

**New Cut**  
Elliptic Cut Pendant

**Product Feature**  
Crystal Fine Rocks Colorful Mixtures



15  
Mystical  
Creatures

**New Crystal**  
**Lacquer<sup>PRO</sup> Ignite Effects**  
Denim, Dark Grey,  
Agave Ignite

**Size Extension**  
Drop Sew-on Stone



35  
Vintage  
Elegance

**New Product**  
Crystal Caviar Mesh

**Cut Extension**  
Crystal Electric Lacquer<sup>PRO</sup>  
Ignite Effects  
Blue, Pink, White Ignite



45  
Innovations



*For all those who love to mix classic pieces with modern pieces, this collection is the perfect addition to your wardrobe.*

© 1981, 1984, 1987, 1990, 1993, 1996, 1999, 2002, 2005, 2008, 2011, 2014, 2017, 2020, 2023 THE MACY'S CORPORATION  
 01-88837-8 *Yellen Classics* for *Thomas*

OFFICIAL WHITE

*Rosetta*



# Classics Interrupted

Starring



**NEW COLOR**  
MAJESTIC GREEN

**NEW CUT**  
MIRAGE PEAR FANCY STONE

Opulence meets discretion as a new era of classic understatement is ushered in. Embracing simplicity, designers focus on creating garments that become enduring essential wardrobe staples. As longevity, and ethical manufacturing take precedence, back-to-basics versatility becomes the epitome of cool.




DM 1/R4 DM 1/R8

# Keywords

PRACTICAL  
LOW-KEY  
STEALTH WEALTH  
CONSIDERED  
VERSATILE  
#QUIETLUXURY

NEW



NEW

NEW

# Insights

As low-key luxury becomes the dominant approach, pared-back style becomes the new fabulous, beautifully mirrored in the cool depth of Majestic Green, and in the discreet cut of the mesmerizing Mirage Pear Fancy Stone. Showcasing refinement, and elegance they make perfect companions for our renewed focus on timeless aesthetics.

NEW

NEW

# Textiles

Knitwear / Felt / Suiting  
Checked wools / Boiled wool  
Leather / Stiff cottons

# Colors

Monochrome magnificence is offset by the gorgeous depth of new Majestic Green, with sunshine yellow and cool water blue alluding to our ongoing affinity with nature. An intriguing pop of Amethyst offers a surprising highlight.



NEW COLOR

# Majestic Green

The refined emerald undertones of Majestic Green are a perfect match for the new focus on tasteful, timeless designs. Discerning and discreet, but with an equally bold presence, Majestic Green is the modern-day answer to cultivated, sophisticated style.



NEW CUT

# Mirage Pear Fancy Stone

In a new interpretation of a classic shape, the mesmerizing Mirage Pear Fancy Stone showcases an aesthetic exuding enduring elegance as we demand longevity in style and design.





NEW COLOR

# Majestic Green

UNIQUE  
CHARACTERISTICS

Boldly saturated, the elegant hue of Majestic Green perfectly reflects the aesthetics of a real Emerald.

The depth of the new color creates exquisite gemstone-inspired jewelry designs.

Crafting a well-rounded portfolio, Majestic Green is the perfect addition to our current range of gorgeous green hues.

Majestic Green is differentiated from our existing Emerald shade by its more yellow undertone.

NEW CUT

# Mirage Pear Fancy Stone

UNIQUE  
CHARACTERISTICS

A flatter Pear Fancy Stone with a height reduction of 20% versus the classic Pear Fancy Stone Art. 4320.

A modern interpretation of the beloved pear shape to freshen-up contemporary designs.

Available in three sizes, and a wide range of colors and effects, such as Crystal Paradise Shine or Crystal Vitrail Medium.

On request - available unfoiled with Crystal Ignite Effect to underline a fine jewelry feel.

# Design Inspirations

1

## ILLUMINATING STYLE

Highlighting the vivacious nature of Majestic Green, and Crystal Denim Ignite, a trail of brooches offers a sense of flexible decadence to silhouettes. With the Mirage Pear Fancy Stone making an appearance in the second and third brooches, a shock of Crystal Electric Blue Ignite is used to adorn a chic centerpiece, affixed with pins for subtle transformative style. Look for the hidden message in the Crystal Electric White Ignite Transfer on the bow.

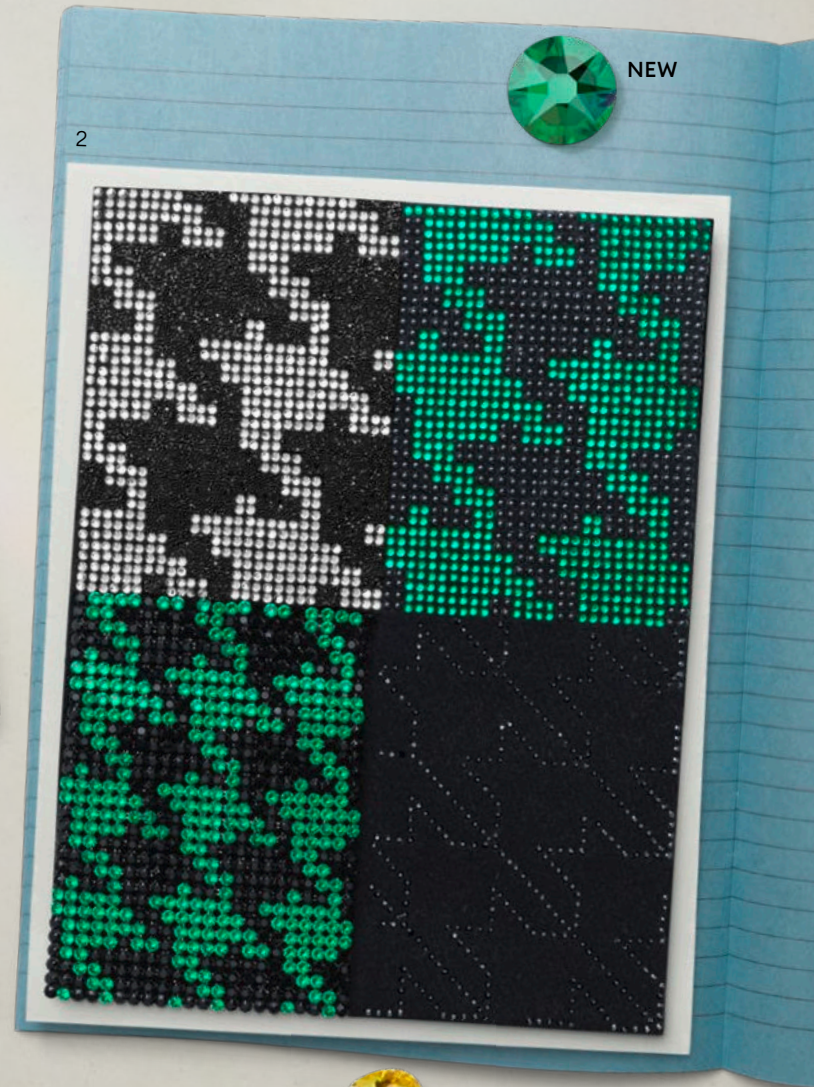
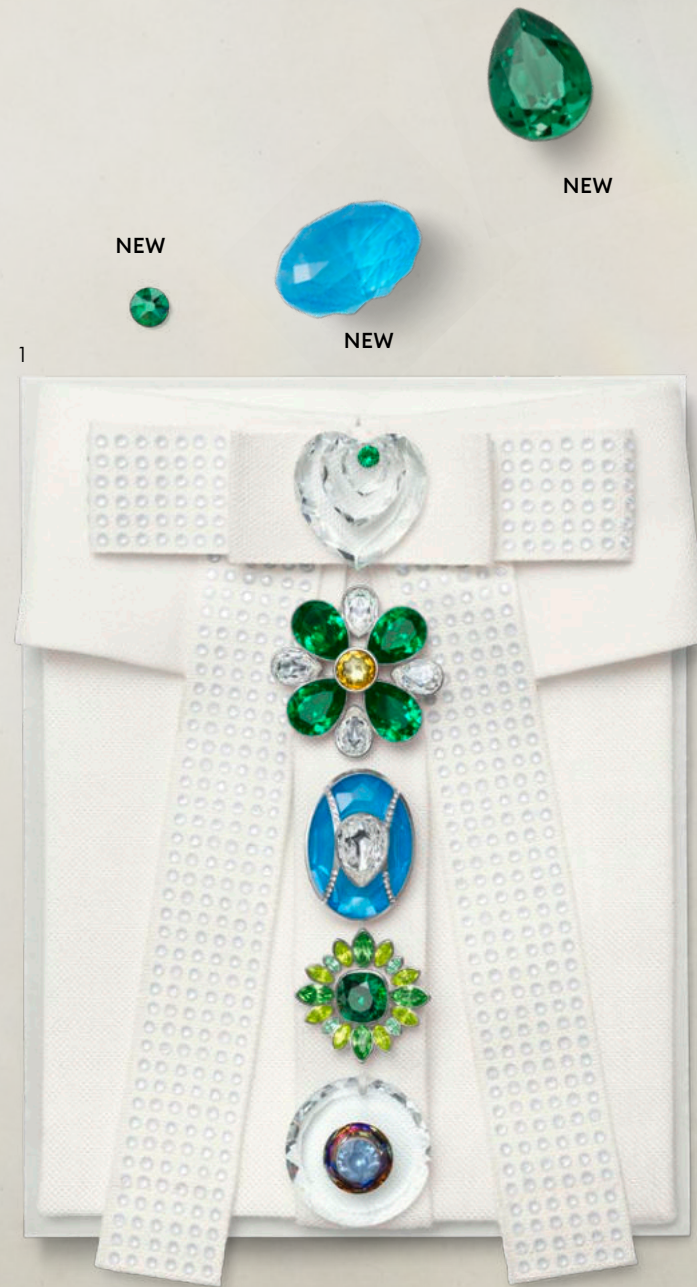
2

## PATTERN PLAY

Four varying textile interpretations of Houndstooth patterning in a bold array of Majestic Green, Crystal, and Jet Hematite upend the classics. With a Crystal Intarsia interpretation nestled up to a Transfer with Cabochon Pearls, giving way to a Crystal Mesh motif, and a simple Transfer on wool felt, the result is a quadrant of stunningly bold simplicity.



Design Inspirations Movie





1

NEW



# Design Inspirations

1

## EFFORTLESS ELEGANCE

Stylishly simple, “Stealth Wealth” stripes are integrated into lightweight knitwear with both Hotfix, brilliant Beads, and magnificent Majestic Green. An overlay incorporating graduating sizes of Crystal Eden Green Pearls atop Multi-Row Cupchains are adorned with little Majestic Green Xilion Heart Pendants. Undulating up to a decadent flourish of the new Mirage Pear Fancy Stone in three varying sizes, the design is a triumph of sophisticated simplicity.

2



2

## BANDING TOGETHER

Dynamic grid cut-outs embellished with Majestic Green Hotfix, and Crystal Mesh sit on top of a checked wool background, highlighting the versatile appeal of this beautiful new hue. A swirling design of Majestic Green and Crystal, in Beads, Cupchains, and Mirage Pear Fancy Stones, is placed on top of a triangle of black twill to ensure stand-out style.

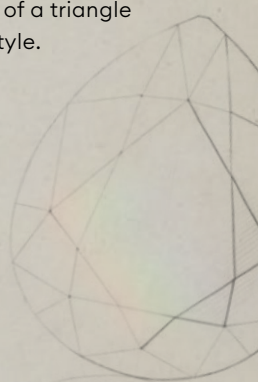
NEW



NEW



NEW





NEW

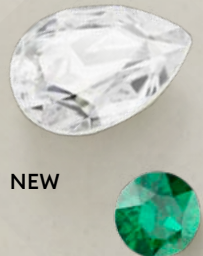
NEW

NEW

# Design Ideas

## TAKE A BOW

A classic collar is transformed with new Elliptic Cut Pendants, and the addition of a captivating centerpiece, finished with Mirage Pear Fancy Stones on either side. Elevating the piece from ordinary to extraordinary, a Majestic Green Transfer with CrystalTex Chaton Banding crafts the base of a removable bow brooch, finished with the allure of Mirage Pear Fancy Stones.





# Design Ideas

## IN FULL BLOOM

Effortless transformative belt style is captured in a double chain, embellished with two removable floral brooches. Boasting the brilliance of Mirage Pear Fancy Stones in Crystal, and Light Rose, married with the Pear Shape Fancy Stone in Majestic Green, a magnificent Cushion Square Fancy Stone forms the centerpiece for the bigger brooch. The smaller brooch is mirrored with a smaller flower of crystals crafted from Navette Fancy Stones, and a bold Majestic Green Cushion Square Fancy Stone center. Secured with lobster clips in a design that offers versatile, accessory-inspired sophistication.

# In Essence



NEW

NEW



**Mystical  
Creatures**

Starring

**NEW CRYSTAL  
LACQUER<sup>PRO</sup> IGNITE EFFECTS  
DENIM, DARK GREY,  
AGAVE IGNITE**

**SIZE EXTENSION  
DROP SEW-ON STONE**

The allure of the ocean is calling with ancient superstitions, and captivating storytelling woven into designs of mesmerizing fluidity. Playing with the luminosity of light and shadow, water-infused elements, and cascading silhouettes create a mystical connection in beautiful, yet unsettling forms that evoke the femininity of mythical transient mermaids.



# Keywords

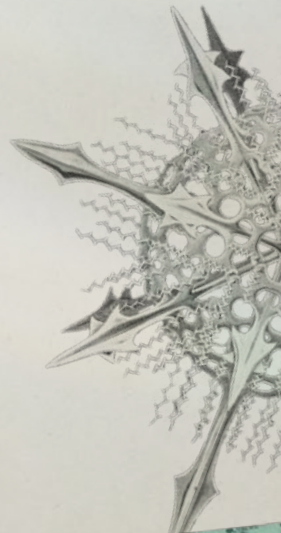
- RITUALS
- OCEANIC ALLURE
- MYSTICISM
- SHADOWY
- GLIMMERING
- AMPHIBIOUS



NEW



NEW



# Insights

Combining to craft a tale of glimmering ocean delights, the new hues of Crystal Lacquer<sup>PRO</sup> Agave, Dark Grey, and Denim Ignite tempt and tantalize with mystical depths. Continuing the current design ethos of embracing all things mysterious and unknown, the addition of two new Sew-on Stone sizes offers captivating dégradés for shimmering surfaces, and Sea Siren-inspired elegance.

NEW



NEW







# Textiles

- Satins
- Fish leather
- Organza / Voile
- Crochet / Tulle
- Netting
- Waterproof material
- Rubber

NEW

NEW

NEW

# Colors

The dark depths of wintry ocean hues craft a palette of shimmering intensity with Crystal Iridescent Tahitian Look Pearl, and Dark Indigo paired with Crystal Dark Grey, Agave and Denim Ignite, offset with the luster of Crystal Cream Pearl.

- Crystal Dark Grey Ignite**  
 RGB 89 / 94 / 98
 NEW 
- Crystal Iridescent Tahitian Look Pearl**  
 RGB 51 / 90 / 102
 NEW 
- Crystal Agave Ignite**  
 RGB 136 / 156 / 143
 NEW 
- Dark Indigo**  
 RGB 48 / 63 / 102
 
- Crystal Cream Pearl**  
 RGB 240 / 237 / 226
 
- Crystal Denim Ignite**  
 RGB 83 / 113 / 143
 NEW 



NEW CRYSTAL LACQUER<sup>PRO</sup>  
IGNITE EFFECTS

# Denim, Dark Grey, Agave Ignite

Crystal Agave, Dark Grey and Denim Ignite Effects are brilliantly attuned to the penchant for modern styles encompassing a sense of archival mysticism. Combining to craft a tale of shimmering ocean delights, this trio tempt and tantalize with their conjuring up of watery depths. Embracing all things oceanic to beautifully round out the current collection, they add instant intrigue to ethereal designs.



NEW CRYSTAL LACQUER<sup>PRO</sup>  
IGNITE EFFECTS

## Denim, Dark Grey, Agave Ignite

### UNIQUE CHARACTERISTICS

This elegant new color family complements and extends our large assortment of distinctive, market-first lacquer effects.

The subtlety of the beautiful lacquered finish showcases the precision-cut and multiple faceting of crystals.

Exquisitely understated hues with depth and detail to add a touch of elegance, and luxury to designs.

The increased brilliance of the Crystal Lacquer<sup>PRO</sup> Ignite Effect ensures the overall look is incredibly close to a classic color, but with lower MOQs and shorter lead times.

SIZE EXTENSION

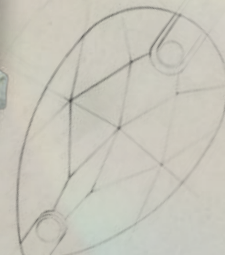
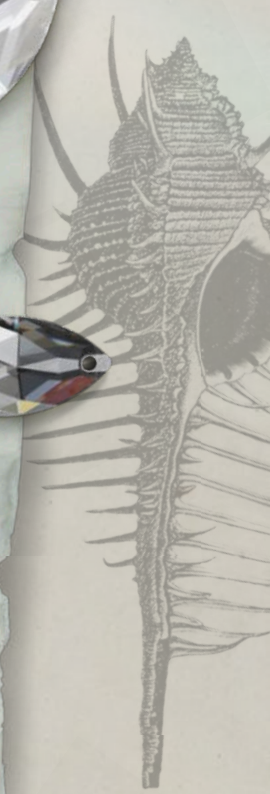
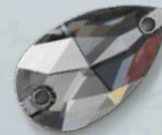
## Drop Sew-on Stone

### UNIQUE CHARACTERISTICS

Size 34 x 20.4 mm is utterly unique – no Sew-on Stone of this size currently exists in the main competitor market.

Setting us apart from the competition, the intermediate 23 x 13.8 mm stone is incomparable in the market.

The addition of two new sizes completes the range, offering myriad design possibilities, and the ability to craft fully realized size dégradés.



# Design Inspirations

## 1 OCEANIC ARTISTRY

In a graceful display, a Transfer combined with a design of Crystal Fine Rocks Colorful Mixtures in blues, entwined with Crystal Pearls, and Fancy Stones, mimics the rhythmic dance of seaweed washing over rocks. Sitting on top of a light-as-air weave, delicate accents of Crystal Denim, Dark Grey and Agave Ignite are interspersed with reactivated Crystal Pearls in complementing hues, to create a design of enchanting appeal.

## 2 MERMAID-INSPIRED ELEGANCE

A mesmerizing repetition of glimmering fish scales unveils the two new size extensions of Drop Sew-on Stones to showcase the full range. Intermixed with the tactility of Crystal Fabric, and the soft sheen of supple leather, they combine to create a shimmering design of natural beauty.



NEW

NEW

NEW

NEW



Design Inspirations Movie



# Design Inspirations

1

## SHIMMERING TREASURES

Baroque Drop Pearls in dark grey are exquisitely fused with new Crystal Dark Grey, Agave, and Denim Ignite in a sublime beaded net structure. Easily detached from the tulle, and tactile faux fur background with a discreet magnet, the juxtaposition of shimmering Pearls, and glowing crystals combine to evoke a sense of treasures from the deep.

2

## DAZZLING DEPTHS

Subtly sophisticated, capturing the essence of light reflecting off water, a lightweight layer of Crystal Fishnet Banding delicately kisses a Transfer that appears to move and breathe. Receding, and reappearing in a swirling, floating oceanic-inspired design of new Majestic Green, Crystal Electric White Ignite, Crystal Dark Grey, Agave, and Denim Ignite this is Haute Couture inspiration at its finest.



NEW



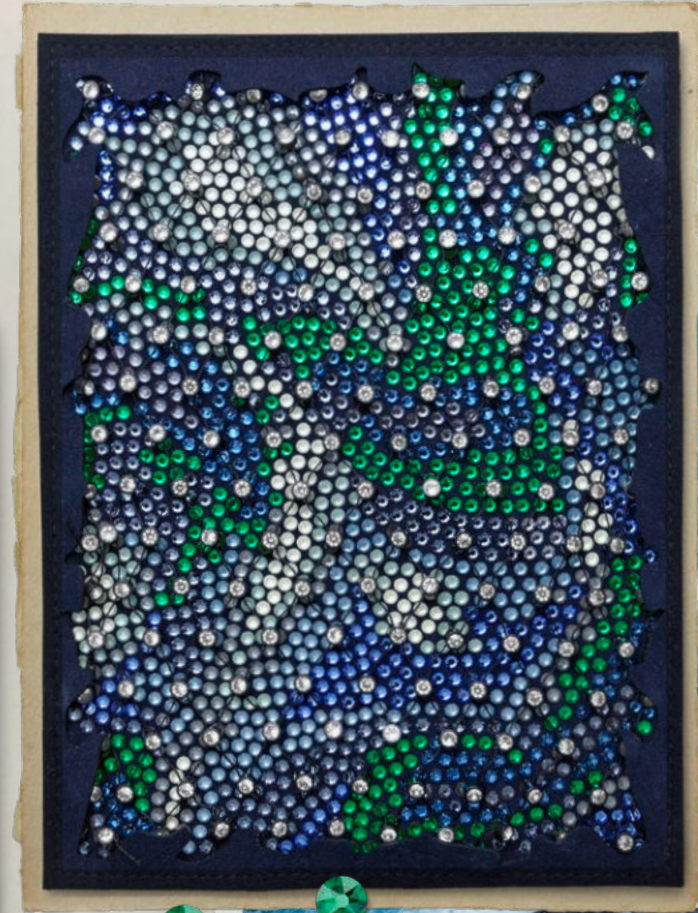
NEW



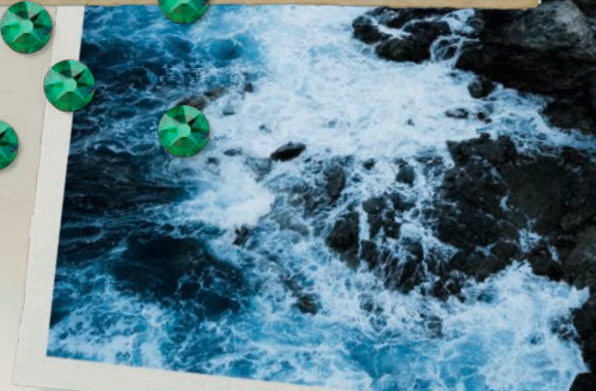
1



NEW



2





NEW

NEW

NEW

NEW

# Design Ideas

## AQUATIC EXTRAVAGANCE

Inspired by Haute Couture decadence, a large, elaborate Crystal Transfer of undulating underwater inspired motifs is delicately designed as a scarf, or dress overlay inspiration. Featuring the new Crystal Agave, Denim and Dark Grey Ignite, combined with Crystal Electric White Ignite, exquisite Pearl Cabochon accents, and Elliptic Cut Pendants, the combination crafts an enigmatic sense of elegant allure.

# Design Ideas

## STEP OUT IN STYLE

Seamlessly linked with jewellery-inspired chains, the two new Drop Sew-on Stone size extensions form a motif of heavenly haptic sensation. In hues of Crystal AB and Crystal Silver Night, accompanied by a range of Sew-on Stones from the standard assortment, the design is secured with clips over exquisite snake-skin leather to add a touch of edgy elegance to an extraordinary boot or bomber jacket design.



# In Essence



NEW

NEW

NEW





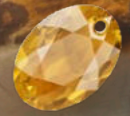
# Bohemian Wilderness

Starring

**NEW CUT**  
ELLIPTIC CUT PENDANT

**PRODUCT FEATURE**  
CRYSTAL FINE ROCKS  
COLORFUL MIXTURES

Drawing inspiration from the ancient threads of protective garments, and the enduring power of practicality, the theme is hinged on history and detail, beautifully coined in designs that impart essential knowledge necessary for our continued survival. Functionality takes center stage as bold choices and folkloric basics converge in styles that offer a sense of deep slowness, earthly connection, and the importance of investing beyond the immediate.





# Keywords

- FOLKLORIC
- WARRIOR
- ANCIENT WISDOMS
- PRACTICAL
- SURVIVAL
- WANDERLUST

NEW

# Insights

Cuts and crystals that pay homage to earth, and her wonders are favored for their folkloric savoir-faire. The Elliptic Cut Pendant with its optimized brilliance in faceting and detail, allows for myriad pattern possibilities in an echo of the archival, while the texture and tactility of Crystal Fine Rocks Colorful Mixtures reflect beauty with a sense of practicality for a new era of survivalist design.





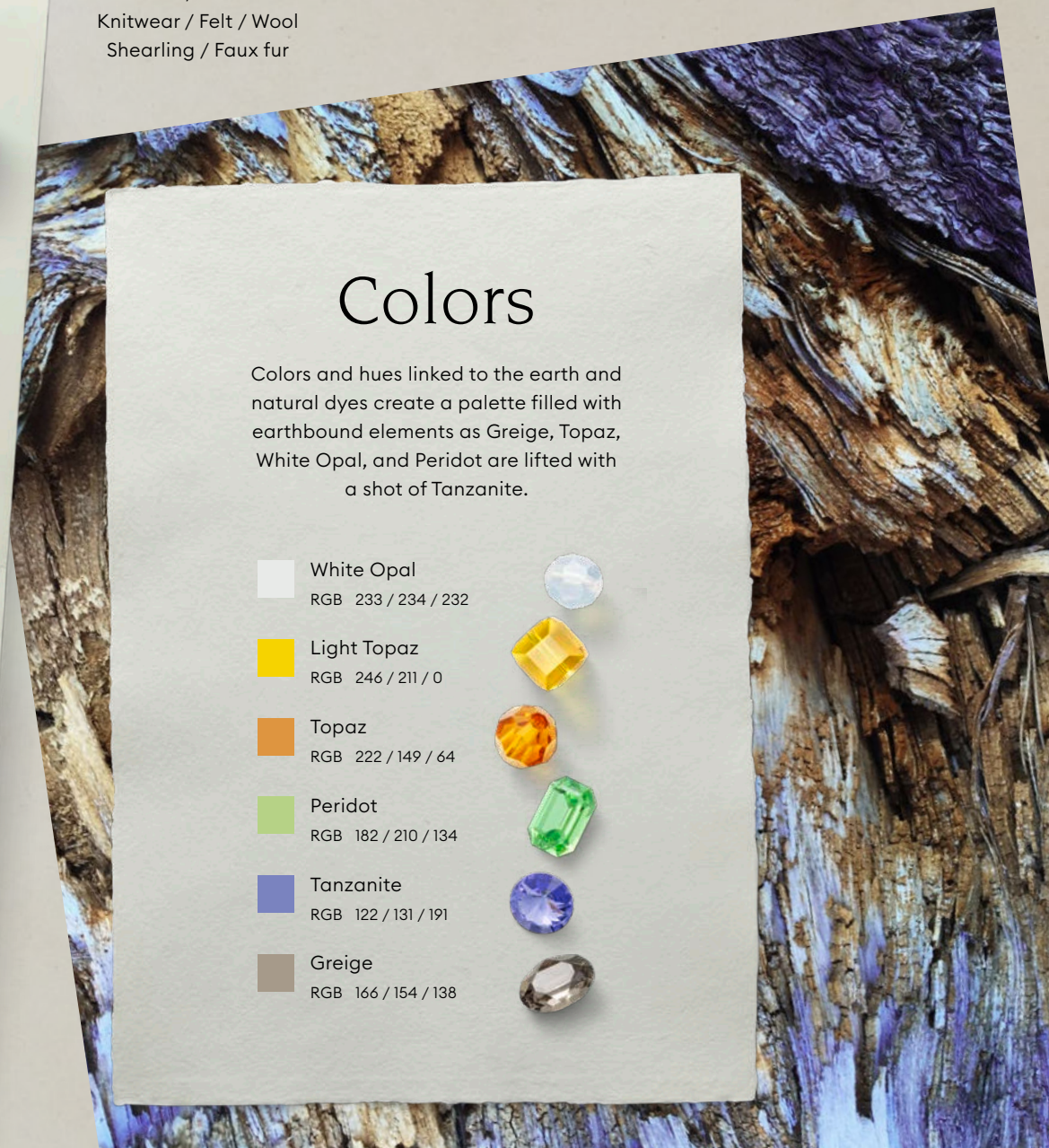
# Textiles

Suede / Leather  
 Knitwear / Felt / Wool  
 Shearling / Faux fur

# Colors

Colors and hues linked to the earth and natural dyes create a palette filled with earthbound elements as Greige, Topaz, White Opal, and Peridot are lifted with a shot of Tanzanite.

-  White Opal  
 RGB 233 / 234 / 232
-  Light Topaz  
 RGB 246 / 211 / 0
-  Topaz  
 RGB 222 / 149 / 64
-  Peridot  
 RGB 182 / 210 / 134
-  Tanzanite  
 RGB 122 / 131 / 191
-  Greige  
 RGB 166 / 154 / 138





NEW CUT  
Elliptic Cut  
Pendant

The stunning gemstone-inspired cut of the Elliptic Cut Pendant highlights the current design focus on earth and her wonders. With its optimized brilliance, and ease of application, the crafting of this Pendant pays homage to folkloric savoir-faire in faceting and detail, allowing for endless design combinations.





NEW CUT

# Elliptic Cut Pendant

UNIQUE  
CHARACTERISTICS

Comparable to a Swarovski Zirconia, the Elliptic Cut Pendant marries a gemstone-inspired look with attractive pricing.

The Elliptic Cut Pendant has a perfectly polished, pristine hole with neat, rounded edges.

Incredible versatility, able to be used across all jewelry formats from earrings, to necklaces, and everything in between.

Colors and effects, as well as sizes, are harmonized with the existing GemCut family.



PRODUCT FEATURE

# Crystal Fine Rocks Colorful Mixtures

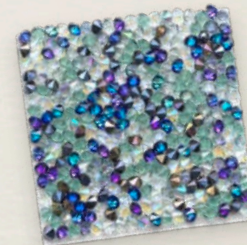
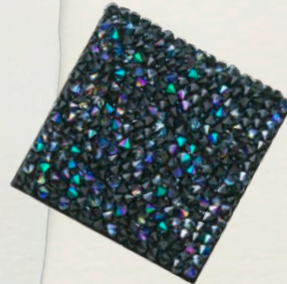
UNIQUE  
CHARACTERISTICS

New color palettes added to Crystal Fine Rocks.

Offers the option to create a personalized color mixture for completely individual designs.

Crafts a new level of sparkle and elegance, from bold golden tones to beautiful blues.

Totally unique to the market.



# Design Inspirations

## 1 SURVIVAL CHIC

Faux fur, and leather combine to craft a sense of indigenous warmth. Natural landscape-inspired materials prevail in this look of Crystal Fine Rocks Colorful Mixtures. Rustic knits, tactile bouclés, and felted fuzzy finishes are combined with Crystal Fine Rocks Colorful Mixtures in blue and gold hues, stitched together with Crystal Cupchains, and Elliptic Cut Pendants.

## 2 NATURAL BEAUTY

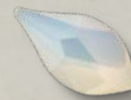
Imitating irregular knitted patterning, Crystal Fine Rocks Colorful Mixtures, in two variants, is applied on an open-weave textile. Integrated Crystal Dark Grey Ignite, and Crystal Electric White Ignite crystals adorn the design, finishing in a flourish of extra small Crystal Fine Rocks Colorful Mixtures, and Elliptic Cut Pendants in complementary hues. Delicate pearl pins created from Crystal Cube Beads attached to fine wire, ending in a Pear Shaped Pearl, craft a design of natural tactility.



Design Inspirations Movie



2





NEW

1



2

NEW

NEW

NEW

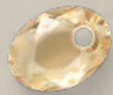
# Design Inspirations

## 1 CAPTIVATING TRADITIONS

Layers of cut-out Alcantara proffer up patterns with a folkloric touch. Crystal Fine Rocks Colorful Mixtures is set on black foil at the top, and a transparent foil at the bottom, combined with a dynamic Transfer in an earthbound color palette, with designs inspired by the past. A tulle wrapped cord adorned with a colored Transfer, interspersed with Crystal Dark Grey Ignite, and Crystal Electric White Ignite, adds versatility.

## 2 HIDDEN WONDERS

A sumptuous lace overlay provides a stunning textural contrast to a wool base, with a bold Crystal Fine Rocks Colorful Mixtures motif in intricate detail, offset by the Elliptic Cut Pendant, and complementing colorful crystals. Weaves, patterns and ethnic touches abound with Majestic Green embedded into different combinations of woven ribbons, finished with raw fringing.



NEW



NEW



Design Inspirations Movie

# Design Ideas

## WRAP YOURSELF IN WHIMSY

Created with 3D wings of Crystal Fine Rocks Colorful Mixtures, and beaded dégradé tails in co-ordinating crystals, double-sided beaded dragonflies transport us to the wonderful world of nature. Affixed with simple gold rings, and complemented by crystals of delicate flitting flies, they add a touch of intricate detail to knitted accessories.



NEW

NEW

NEW





NEW

NEW

## Design Ideas

### HARNESSING STYLE

Decorative straps, secured with lobster clips and adorned with Crystal Fine Rocks Colorful Mixtures in shades of indigo and gold, are finished with matching Beads, and Elliptic Cut Pendants to enhance the appeal. Incredibly versatile, use them as simple straps for a bag, or wear them as belts, and delicate decorative harnesses as an effortless way to elevate any outfit.

# In Essence

NEW

NEW

NEW





# Vintage Elegance

Starring

**NEW PRODUCT**  
CRYSTAL CAVIAR MESH

**CUT EXTENSION**  
CRYSTAL ELECTRIC LACQUER<sup>PRO</sup>  
IGNITE EFFECTS  
BLUE, PINK, WHITE IGNITE

Inspired by the allure of Film Noir, designers create a collection of beautifully sophisticated, and elegantly subdued luxurious looks. Replacing eccentric excess, a wave of grown-up glamour re-enters the fashion-scape, with a focus on sumptuous separates, and meticulously coordinated sets. Embracing the art of über-chic style, a contemporary fashion narrative beckons us to step out of the shadows, and indulge in a new era of refinement.



NEW



# Keywords

- ELEGANCE
- OLD HOLLYWOOD
- NEW HEIRLOOMS
- SENSUAL
- ILLUMINATED
- DRAMATIC

NEW



# Insights

Affording nostalgic interpretations of contemporary fashion, Crystal Electric Blue, Pink and White Ignite Effects are offset by the subtle radiance of the exquisitely tactile Crystal Caviar Mesh. The brilliant incorporation of these polar opposites blends the past with the future for a new take on sentimental storytelling in design.

NEW



NEW





# Textiles

Silk  
Satin / Organza  
Velvet / Velour / Leather  
Stretchy textiles



# Colors

A brightly colored palette of noughties-style neons offers a high-voltage hit to high-end designs. Toned-down Erinite, teamed with gold, and a hint of revived Rose Peach, conjure up new formats for glamorous dressing.

-  Crystal Electric Pink Ignite  
RGB 250 / 0 / 138
-  Crystal Electric Blue Ignite  
RGB 0 / 99 / 178
-  Crystal Electric White Ignite  
RGB 241 / 242 / 241
-  Erinite  
RGB 126 / 181 / 140
-  Rose Peach  
RGB 245 / 168 / 165
-  Crystal Bright Gold Pearl  
RGB 201 / 169 / 105

NEW PRODUCT

# Crystal Caviar Mesh

The subtle brilliance of the exquisitely tactile Crystal Caviar Mesh creates designs of pure sophistication. With its velvety look cascading over silhouettes, the luxurious shimmering format reflects light in a delicate new way, creating the ideal element for our renewed love affair with nostalgic, form-fitting designs.



NEW PRODUCT

# Crystal Caviar Mesh

## UNIQUE CHARACTERISTICS

Offering a completely new look and feel, the use of cylindrical transparent balls provides a key differentiator to existing mesh.

The endless color options of the metal casing allow customer differentiation.

Completely unique, no other similar product exists in the market.

When combined with the colored casing, the transparent balls create an almost velvety sheen, subtly reflecting light in a delicate, and sophisticated way.

Due to the perfectly cylindrical balls, the product is completely catch-free, making it ideal for textile, accessories, and jewelry segments.



CUT EXTENSION  
CRYSTAL ELECTRIC  
LACQUER<sup>PRO</sup> IGNITE EFFECTS

# Electric Blue, Pink, White Ignite

## UNIQUE CHARACTERISTICS

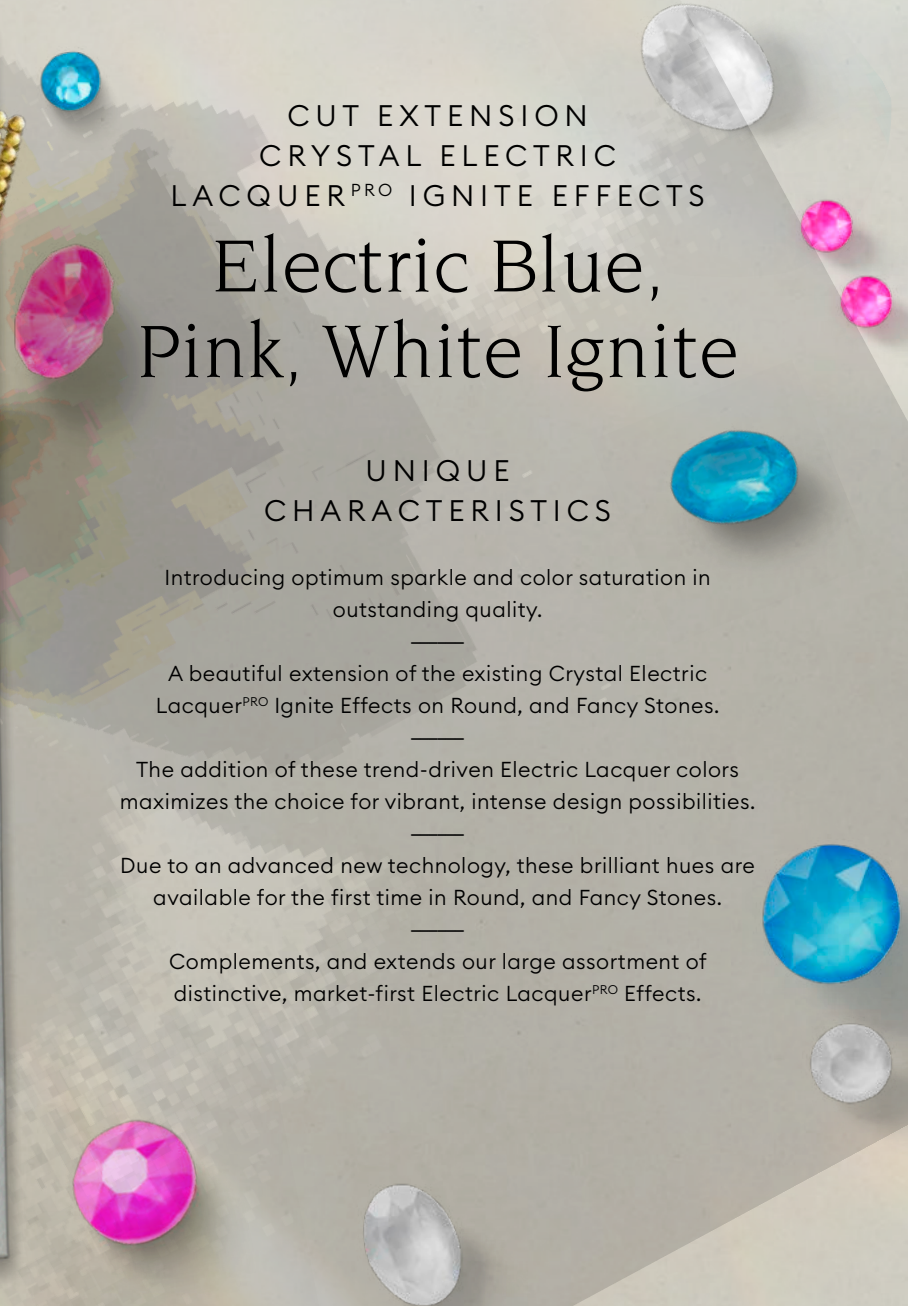
Introducing optimum sparkle and color saturation in outstanding quality.

A beautiful extension of the existing Crystal Electric Lacquer<sup>PRO</sup> Ignite Effects on Round, and Fancy Stones.

The addition of these trend-driven Electric Lacquer colors maximizes the choice for vibrant, intense design possibilities.

Due to an advanced new technology, these brilliant hues are available for the first time in Round, and Fancy Stones.

Complements, and extends our large assortment of distinctive, market-first Electric Lacquer<sup>PRO</sup> Effects.



# Design Inspirations

1

## SUMPTUOUS SIMPLICITY

Commencing with a band of customized green in Crystal Caviar Mesh atop a rubbed blush velvet background, a simple gold buckle is adorned with crystals for a strap idea. Highlighting transformative style, a satin ribbon is created with Crystal Caviar Mesh glued around a gold ring for a second design of chic simplicity. The final statement incorporates Crystal Caviar Mesh Hotfix on suede, embellished with a closure in a dégradé of 3D printed shades in Crystal Electric White, and Crystal Electric Pink Ignite for tactile beauty at its most elegant.

2

## FLAWLESS FLORAL CHARM

An all-over Transfer of beautiful overblown blooms crafted with Majestic Green, Crystal Electric Pink Ignite and standard assorted hues is hotfixed onto tulle, and stitched on to shimmering Crystal Caviar Mesh to craft a double-faced design that exudes all-round elegance.



Design Inspirations Movie



NEW



NEW

NEW



NEW

2



# Design Inspirations

## 1 PETAL PERFECTION

Inspired by an exquisite heritage pattern from 1877, printed on satin, and set with imaginative 3D casings that appear to skim the surface, this elegant Asian-inspired floral supports a range of tactile blossoms. Floating crystals merge Alcantara, and leather using reactivated Crystal Pearls as grounding centerpieces. Crystal Electric White, and Blue Ignite surrounded by Crystal Agave, Denim and Dark Grey Ignite combine with complementary hues to form precious petal designs.

## 2 EASTERN FUSION

Shimmering Transfer color dégradés focused on Crystal Electric Pink, and Electric Blue Ignite craft an elegant entwined pattern on a base of Alcantara. With a solid centerpiece inset with Fancy Stones in Crystal Electric Pink, Blue, and White Ignite, surrounded by insets of Ultrafine Rocks motifs on repeat, the result is a mesmerizing geometry of captivating patterns.



1

NEW



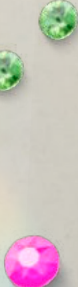
NEW

2



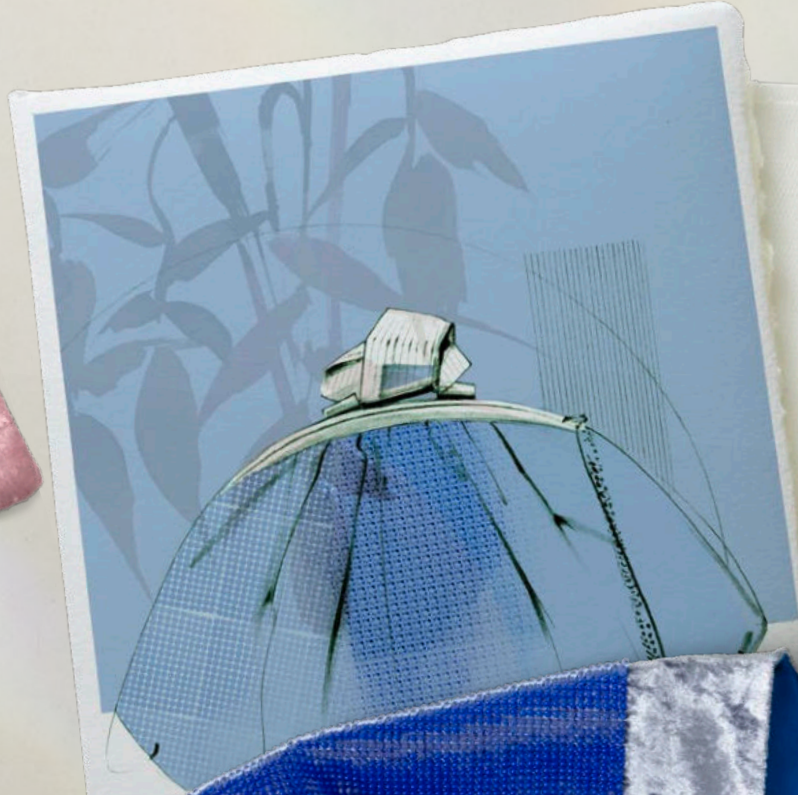
NEW

NEW



NEW





## Design Ideas

### TIMELESS SOPHISTICATION

Perfect for a simple shell top, or used to embellish a plush padded handbag shape. The fluidity of the sensational new Crystal Caviar Mesh – with its beautiful velvety sheen, and sophisticated visual effect – forms inspired tactile designs on lush velvet backdrops.



# Design Ideas

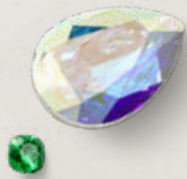
## ELECTRIFYING STYLE

A versatile decorative piece for canisters, powder jars or compacts. This inspired floral design in new Crystal Electric Pink, Blue, and White Ignite, is married with coordinating colors, and a bold centerpiece.

A Thin Octagon Fancy Stone in Crystal Electric White Ignite, is inset into a solid backdrop to craft an exquisite design of high-voltage style.

# In Essence





51

## Round Stones

53

## Flat Backs No Hotfix

54

## Flat Backs Hotfix

55

## Sew-on Articles

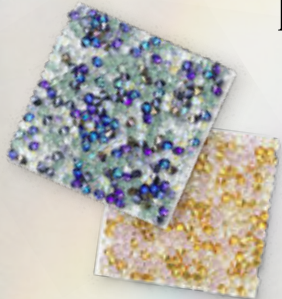


56

## Fancy Stones

61

## Beads



63

## Pendants

66

## Crystal Transfers

68

## Crystal Textures

70

## Linked Crystal Components



82

## Crystal Rivets & Rose Pins



84

## Crystal Design Inspiration Collection

85

### Innovations Patches

89

### Classics Interrupted

93

### Mystical Creatures

97

### Bohemian Wilderness

101

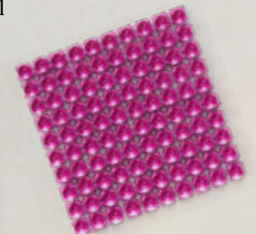
### Vintage Elegance

105

### General Warning

106

### Why Swarovski



# New Crystal Elements

## Fancy Stone



**4390** Mirage Pear  
Fancy Stone  
10x7, 14x10, 18x13 mm

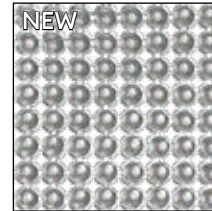
## Pendant



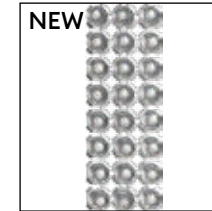
**6438** Elliptic Cut  
Pendant  
9, 11.5, 16 mm

# New Linked Crystal Components

## Crystal Caviar Mesh



**40 500** Crystal Caviar  
Mesh



**40 501** Crystal Caviar  
Mesh

# New Plain Color



Majestic Green (336)

## Round Stones

**1028**  
PP 2, 3, 4, 5, 6, 7, 8,  
9, 10, 11, 12, 13

**1088**  
PP 14, 18, 21, 24, 27,  
31, 32  
SS 19, 24, 29, 34, 39

**1122**  
SS 39, 47  
12, 14 mm

**1383**  
8, 10, 14 mm

## Flat Backs No Hotfix

**2058**  
SS 5, 7, 9

**2088**  
SS 12, 16, 20, 30, 34

## Flat Backs Hotfix

**2038**  
SS 6, 8, 10

**2078**  
SS 12, 16, 20, 34

## Sew-on Articles

**3700**  
6, 8, 10, 12, 14 mm

## Fancy Stones

**4120**  
6x4, 8x6, 14x10,  
18x13 mm

**4228**  
4x2, 5x2.5, 6x3,  
8x4, 10x5, 15x7 mm

**4320**  
6x4, 8x6, 10x7,  
14x10, 18x13 mm

**4329**  
8x7, 10x8.7,  
14x12.1 mm

**4428**  
1.5, 2, 3, 4, 8 mm

**4470**  
10, 12 mm

**4501**  
4x2, 5x2.5,  
7x3 mm

**4610**  
14x10, 18x13 mm

## Beads

**5000**  
4, 6, 8 mm

**5040**  
6, 8 mm

**5044**  
5x4, 7x6,  
9.5x8 mm

**5328**  
3, 4, 5, 6 mm

**5601**  
4, 6, 8 mm

## Pendants

**6000**  
11x5.5 mm

**6010**  
11x5.5, 13x6.5 mm

**6228**  
10.3x10,  
14.4x14 mm

**6430**  
8, 10 mm

**6436**  
9, 11.5, 16 mm

## Crystal Transfers

**2038**  
SS 6, 8, 10

**2078**  
SS 12, 16, 20, 34

## Crystal Mesh

**40 000, 40 001**  
PP 21

**40 600, 40 601**  
PP 9

**40 200, 40 201**  
PP 21

**40 210, 40 211**  
PP 14

**40 900, 40 901**  
PP 21

**40 910, 40 911**  
PP 14

## Cupchains

**27 004**  
PP 11, 14, 18, 24, 32  
SS 24

**27 104**  
PP 14, 24, 32  
SS 29

**27 004 Multi-Row**  
PP 11, 14, 18, 24

## Rivets

**53 001, 53 005,  
53 006**  
SS 29, 34, 39

## Rose Pins

**53 301, 53 302,  
53 303, 53 304**  
SS 10, 16, 20, 34

## Flat Back Bandings

**55 000, 55 001**  
SS 20

**55 500, 55 501**  
SS 12

# New Effect: Crystal Electric Lacquer<sup>PRO</sup> Ignite Effects



Crystal Electric Blue Ignite (001 L134I)



Crystal Electric Pink Ignite (001 L137I)

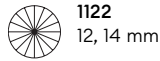


Crystal Electric White Ignite (001 L139I)

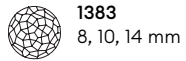
## Round Stones



1088  
SS 29, 39

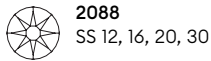


1122  
12, 14 mm



1383  
8, 10, 14 mm

## Flat Backs No Hotfix

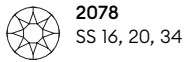


2088  
SS 12, 16, 20, 30

## Flat Backs Hotfix

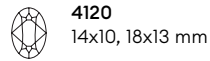


2038  
SS 10

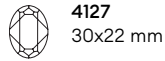


2078  
SS 16, 20, 34

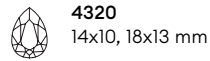
## Fancy Stones



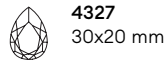
4120  
14x10, 18x13 mm



4127  
30x22 mm



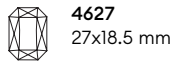
4320  
14x10, 18x13 mm



4327  
30x20 mm



4470  
10, 12 mm

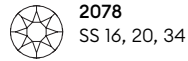


4627  
27x18.5 mm

## Crystal Transfers

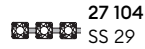


2038  
SS 10



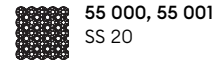
2078  
SS 16, 20, 34

## Cupchains

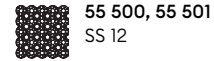


27 104  
SS 29

## Flat Back Bandings



55 000, 55 001  
SS 20



55 500, 55 501  
SS 12

## Rivets



53 001, 53 006  
SS 29, 39

## Rose Pins



53 301, 53 302,  
53 303, 53 304  
SS 10, 16, 20, 34



# New Crystal Lacquer<sup>PRO</sup> Ignite Effects



Crystal Agave Ignite (001 L165I)



Crystal Dark Grey Ignite (001 L111I)

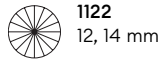


Crystal Denim Ignite (001 L166I)

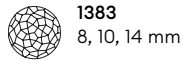
## Round Stones



1088  
SS 29, 39

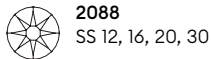


1122  
12, 14 mm



1383  
8, 10, 14 mm

## Flat Backs No Hotfix

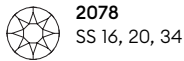


2088  
SS 12, 16, 20, 30

## Flat Backs Hotfix

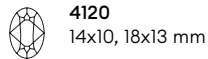


2038  
SS 10

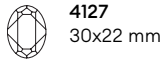


2078  
SS 16, 20, 34

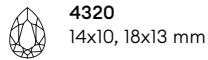
## Fancy Stones



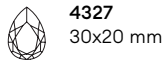
4120  
14x10, 18x13 mm



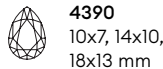
4127  
30x22 mm



4320  
14x10, 18x13 mm



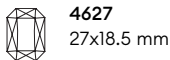
4327  
30x20 mm



4390  
10x7, 14x10,  
18x13 mm



4470  
10, 12 mm

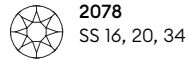


4627  
27x18.5 mm

## Crystal Transfers

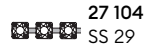


2038  
SS 10



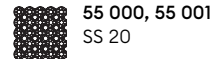
2078  
SS 16, 20, 34

## Cupchains

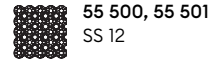


27 104  
SS 29

## Flat Back Bandings

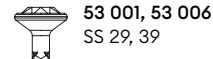


55 000, 55 001  
SS 20



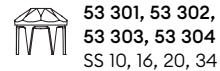
55 500, 55 501  
SS 12

## Rivets



53 001, 53 006  
SS 29, 39

## Rose Pins



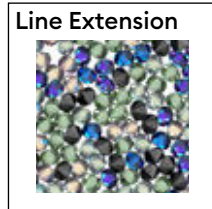
53 301, 53 302,  
53 303, 53 304  
SS 10, 16, 20, 34

## Line Extensions



**New Sizes**

**3230** 23x13.8,  
34x20.4 mm



**Line Extension**

**Crystal Textures**

### Sew-on Articles



**3230**  
23x13.8,  
34x20.4 mm

### Colorful mixtures for Fine Rocks

#### Multicolors

Aquamarine & Crystal Paradise Shine (202 M155)

255NIFA & Crystal Moonlight & Crystal Bermuda Blue  
(255 M156)

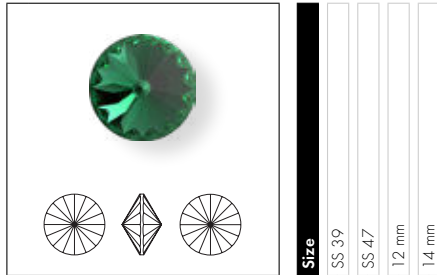
Vintage Rose & Crystal Golden Shadow & Crystal  
Metallic Sunshine (319 M148)

Vintage Rose & Crystal Golden Shadow &  
Crystal Metallic Sunshine & Crystal Metallic Light Gold  
(319 M158)

Erinite & Crystal Shimmer & Crystal Heliotrope &  
Crystal Paradise Shine & Crystal Bermuda Blue  
(360 M150)



1122 Rivoli



<b>Size</b>				
	SS 39	SS 47	12 mm	14 mm

**Colors**

**Plain Colors**

	Majestic Green F (336)	NEW	<input type="checkbox"/>	<input type="checkbox"/>	<input type="checkbox"/>
--	------------------------	-----	--------------------------	--------------------------	--------------------------

**Crystal Effects**

**Crystal Lacquer<sup>PRO</sup> Effects**

**Crystal Lacquer<sup>PRO</sup> Ignite Effects**

	Crystal Agave Ignite (001 L1651)	NEW	<input type="checkbox"/>	<input type="checkbox"/>	<input type="checkbox"/>
--	----------------------------------	-----	--------------------------	--------------------------	--------------------------

	Crystal Dark Grey Ignite (001 L1111)	NEW	<input type="checkbox"/>	<input type="checkbox"/>	<input type="checkbox"/>
--	--------------------------------------	-----	--------------------------	--------------------------	--------------------------

	Crystal Denim Ignite (001 L1661)	NEW	<input type="checkbox"/>	<input type="checkbox"/>	<input type="checkbox"/>
--	----------------------------------	-----	--------------------------	--------------------------	--------------------------

**Crystal Electric Lacquer<sup>PRO</sup> Ignite Effects**

	Crystal Electric Blue Ignite (001 L1341)	NEW	<input type="checkbox"/>	<input type="checkbox"/>	<input type="checkbox"/>
--	--	-----	--------------------------	--------------------------	--------------------------

	Crystal Electric Pink Ignite (001 L1371)	NEW	<input type="checkbox"/>	<input type="checkbox"/>	<input type="checkbox"/>
--	--	-----	--------------------------	--------------------------	--------------------------

	Crystal Electric White Ignite (001 L1391)	NEW	<input type="checkbox"/>	<input type="checkbox"/>	<input type="checkbox"/>
--	---	-----	--------------------------	--------------------------	--------------------------

1383 Fantasy Round Stone



<b>Size</b>			
	8 mm	10 mm	14 mm

**Colors**

**Plain Colors**

	Majestic Green F (336)	NEW	<input type="checkbox"/>	<input type="checkbox"/>	<input type="checkbox"/>
--	------------------------	-----	--------------------------	--------------------------	--------------------------

**Crystal Effects**

**Crystal Lacquer<sup>PRO</sup> Effects**

**Crystal Lacquer<sup>PRO</sup> Ignite Effects**

	Crystal Agave Ignite (001 L1651)	NEW	<input type="checkbox"/>	<input type="checkbox"/>	<input type="checkbox"/>
--	----------------------------------	-----	--------------------------	--------------------------	--------------------------

	Crystal Dark Grey Ignite (001 L1111)	NEW	<input type="checkbox"/>	<input type="checkbox"/>	<input type="checkbox"/>
--	--------------------------------------	-----	--------------------------	--------------------------	--------------------------

	Crystal Denim Ignite (001 L1661)	NEW	<input type="checkbox"/>	<input type="checkbox"/>	<input type="checkbox"/>
--	----------------------------------	-----	--------------------------	--------------------------	--------------------------

**Crystal Electric Lacquer<sup>PRO</sup> Ignite Effects**

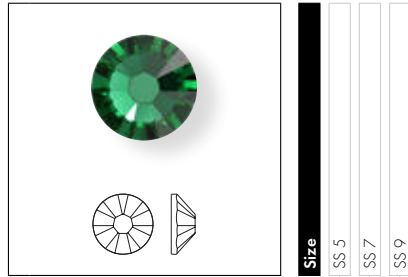
	Crystal Electric Blue Ignite (001 L1341)	NEW	<input type="checkbox"/>	<input type="checkbox"/>	<input type="checkbox"/>
--	--	-----	--------------------------	--------------------------	--------------------------

	Crystal Electric Pink Ignite (001 L1371)	NEW	<input type="checkbox"/>	<input type="checkbox"/>	<input type="checkbox"/>
--	--	-----	--------------------------	--------------------------	--------------------------

	Crystal Electric White Ignite (001 L1391)	NEW	<input type="checkbox"/>	<input type="checkbox"/>	<input type="checkbox"/>
--	---	-----	--------------------------	--------------------------	--------------------------

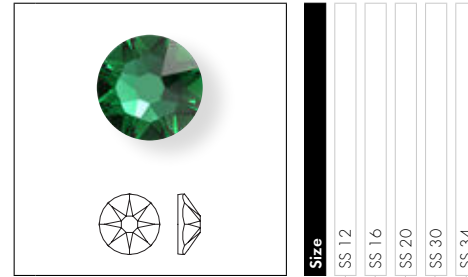
# Flat Backs No Hotfix

2058 Xilion Rose Enhanced



Size	SS 5	SS 7	SS 9
Colors			
Plain Colors			
Majestic Green F (336)	NEW		

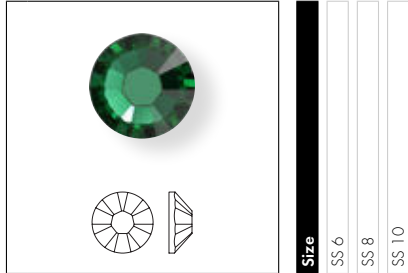
2088 XIRIUS Rose



Size	SS 12	SS 16	SS 20	SS 30	SS 34
Colors					
Plain Colors					
Majestic Green F (336)	NEW				
Crystal Effects					
Crystal Lacquer <sup>PRO</sup> Effects					
Crystal Lacquer <sup>PRO</sup> Ignite Effects					
Crystal Agave Ignite (001 L1651)	NEW				
Crystal Dark Grey Ignite (001 L1111)	NEW				
Crystal Denim Ignite (001 L1661)	NEW				
Crystal Electric Lacquer <sup>PRO</sup> Ignite Effects					
Crystal Electric Blue Ignite (001 L1341)	NEW				
Crystal Electric Pink Ignite (001 L1371)	NEW				
Crystal Electric White Ignite (001 L1391)	NEW				

# Flat Backs Hotfix

2038 XILION Rose Hotfix



Size	SS 6	SS 8	SS 10
------	------	------	-------

**Colors**

**Plain Colors**

Majestic Green A HF (336) **NEW**

**Crystal Effects**

**Crystal Lacquer<sup>PRO</sup> Effects**

**Crystal Lacquer<sup>PRO</sup> Ignite Effects**

Crystal Agave Ignite HFT (001 L1651) **NEW**

Crystal Dark Grey Ignite HFT (001 L1111) **NEW**

Crystal Denim Ignite HFT (001 L1661) **NEW**

**Crystal Electric Lacquer<sup>PRO</sup> Ignite Effects**

Crystal Electric Blue Ignite HFT (001 L1341) **NEW**

Crystal Electric Pink Ignite HFT (001 L1371) **NEW**

Crystal Electric White Ignite HFT (001 L1391) **NEW**

2078 Xirius Rose Hotfix



Size	SS 12	SS 16	SS 20	SS 34
------	-------	-------	-------	-------

**Colors**

**Plain Colors**

Majestic Green A HF (336) **NEW**

**Crystal Effects**

**Crystal Lacquer<sup>PRO</sup> Effects**

**Crystal Lacquer<sup>PRO</sup> Ignite Effects**

Crystal Agave Ignite HFT (001 L1651) **NEW**

Crystal Dark Grey Ignite HFT (001 L1111) **NEW**

Crystal Denim Ignite HFT (001 L1661) **NEW**

**Crystal Electric Lacquer<sup>PRO</sup> Ignite Effects**

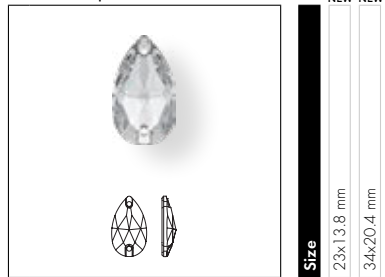
Crystal Electric Blue Ignite HFT (001 L1341) **NEW**

Crystal Electric Pink Ignite HFT (001 L1371) **NEW**

Crystal Electric White Ignite HFT (001 L1391) **NEW**

# Sew-on Articles

3230 Drop Sew-on Stone



**NEW NEW**  
**Size**  
 23x13.8 mm  
 34x20.4 mm

**Crystal**

Crystal F (001)

**Colors**

**Plain Colors**

Aquamarine F (202)

Black Diamond F (215)

Emerald F (205)

Jet (280)

Light Colorado Topaz F (246)

Light Rose F (223)

Scarlet F (276)

**Crystal Effects**

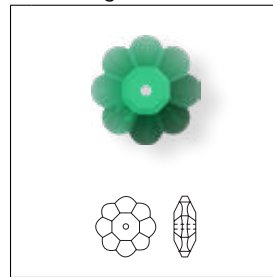
**Transparent Effects**

Crystal AB F (001 AB)

Crystal Golden Shadow F (001 GSHA)

Crystal Silver Night (001 SINI)

3700 Marguerite Lochrose



**Size**  
 6 mm  
 8 mm  
 10 mm  
 12 mm  
 14 mm

**Colors**

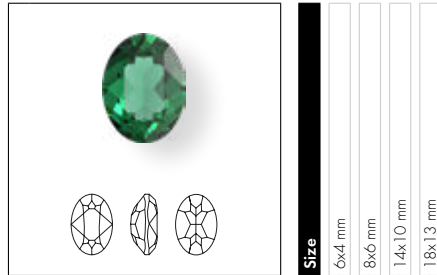
**Plain Colors**

Majestic Green F (336)

**NEW**

# Fancy Stones

4120 Oval Fancy Stone



<b>Size</b>	6x4 mm	8x6 mm	14x10 mm	18x13 mm
-------------	--------	--------	----------	----------

**Colors**

**Plain Colors**

Majestic Green F (336)	NEW	<input type="checkbox"/>	<input type="checkbox"/>	<input type="checkbox"/>
------------------------	-----	--------------------------	--------------------------	--------------------------

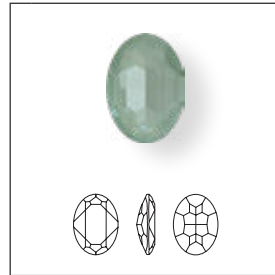
**Crystal Effects**

**Crystal Lacquer<sup>PRO</sup> Effects**

**Crystal Lacquer<sup>PRO</sup> Ignite Effects**

Crystal Agave Ignite (001 L1651)	NEW	<input type="checkbox"/>	<input type="checkbox"/>	<input type="checkbox"/>
Crystal Dark Grey Ignite (001 L1111)	NEW	<input type="checkbox"/>	<input type="checkbox"/>	<input type="checkbox"/>
Crystal Denim Ignite (001 L1661)	NEW	<input type="checkbox"/>	<input type="checkbox"/>	<input type="checkbox"/>
<b>Crystal Electric Lacquer<sup>PRO</sup> Ignite Effects</b>				
Crystal Electric Blue Ignite (001 L1341)	NEW	<input type="checkbox"/>	<input type="checkbox"/>	<input type="checkbox"/>
Crystal Electric Pink Ignite (001 L1371)	NEW	<input type="checkbox"/>	<input type="checkbox"/>	<input type="checkbox"/>
Crystal Electric White Ignite (001 L1391)	NEW	<input type="checkbox"/>	<input type="checkbox"/>	<input type="checkbox"/>

4127 Big Oval Fancy Stone



<b>Size</b>	30x22 mm
-------------	----------

**Crystal Effects**

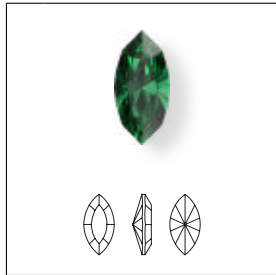
**Crystal Lacquer<sup>PRO</sup> Effects**

**Crystal Lacquer<sup>PRO</sup> Ignite Effects**

Crystal Agave Ignite (001 L1651)	NEW	<input type="checkbox"/>
Crystal Dark Grey Ignite (001 L1111)	NEW	<input type="checkbox"/>
Crystal Denim Ignite (001 L1661)	NEW	<input type="checkbox"/>
<b>Crystal Electric Lacquer<sup>PRO</sup> Ignite Effects</b>		
Crystal Electric Blue Ignite (001 L1341)	NEW	<input type="checkbox"/>
Crystal Electric Pink Ignite (001 L1371)	NEW	<input type="checkbox"/>
Crystal Electric White Ignite (001 L1391)	NEW	<input type="checkbox"/>

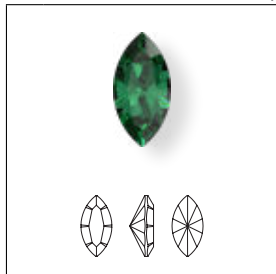


4228 XILION Navette Fancy Stone



Size 4x2, 5x2.5 mm

4228 XILION Navette Fancy Stone



Size 6x3, 8x4, 10x5, 15x7 mm

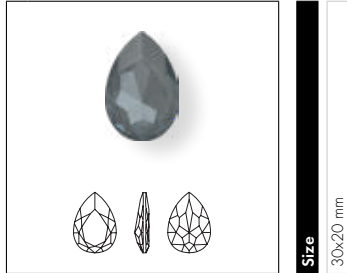
4228	Size	4x2 mm	5x2.5 mm	6x3 mm	8x4 mm	10x5 mm	15x7 mm
	Colors						
	Plain Colors						
	Majestic Green F (336)	NEW					

4320 Pear Fancy Stone



4320	Size	6x4 mm	8x6 mm	10x7 mm	14x10 mm	18x13 mm
	Colors					
	Plain Colors					
	Majestic Green F (336)	NEW				
	Crystal Effects					
	Crystal Lacquer <sup>PRO</sup> Effects					
Crystal Lacquer <sup>PRO</sup> Ignite Effects						
Crystal Agave Ignite (001 L1651)	NEW					
Crystal Dark Grey Ignite (001 L1111)	NEW					
Crystal Denim Ignite (001 L1661)	NEW					
Crystal Electric Lacquer <sup>PRO</sup> Ignite Effects						
Crystal Electric Blue Ignite (001 L1341)	NEW					
Crystal Electric Pink Ignite (001 L1371)	NEW					
Crystal Electric White Ignite (001 L1391)	NEW					

4327 Large Pear Fancy Stone



**Size**  
30x20 mm

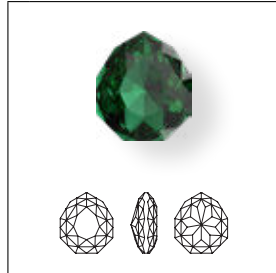
**Crystal Effects**

**Crystal Lacquer<sup>PRO</sup> Effects**

**Crystal Lacquer<sup>PRO</sup> Ignite Effects**

- Crystal Agave Ignite (001 L1651) NEW
- Crystal Dark Grey Ignite (001 L1111) NEW
- Crystal Denim Ignite (001 L1661) NEW
- Crystal Electric Lacquer<sup>PRO</sup> Ignite Effects**
- Crystal Electric Blue Ignite (001 L1341) NEW
- Crystal Electric Pink Ignite (001 L1371) NEW
- Crystal Electric White Ignite (001 L1391) NEW

4329 Majestic Fancy Stone



**Size**  
8x7 mm  
10x8.7 mm  
14x12.1 mm

**Colors**

**Plain Colors**

- Majestic Green F (336) NEW

4390 Mirage Pear Fancy Stone <sup>NEW</sup>



**Size**  
10x7 mm  
14x10 mm  
18x13 mm

**Crystal**

- Crystal F (001)

**Colors**

**Plain Colors**

- Amethyst F (204)
- Aquamarine F (202)
- Black Diamond F (215)
- Emerald F (205)
- Light Colorado Topaz F (246)
- Light Rose F (223)
- Montana F (207)
- Scarlet F (276)

**Crystal Effects**

**Transparent Effects**

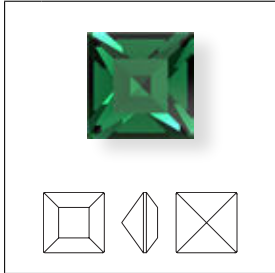
- Crystal AB F (001 AB)
- Crystal Paradise Shine F (001 PARSH)
- Crystal Silver Night F (001 SINI)
- Crystal Vitrail Medium F (001 VM)

**Crystal Lacquer<sup>PRO</sup> Effects**

**Crystal Lacquer<sup>PRO</sup> Ignite Effects**

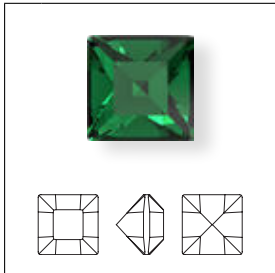
- Crystal Agave Ignite (001 L1651) NEW
- Crystal Dark Grey Ignite (001 L1111) NEW
- Crystal Denim Ignite (001 L1661) NEW

4428 XILION Square Fancy Stone



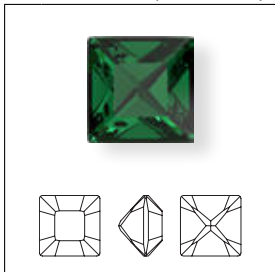
Size 1.5, 2 mm

4428 XILION Square Fancy Stone



Size 3, 4 mm

4428 XILION Square Fancy Stone



Size 8 mm

4428

Size	1.5 mm	2 mm	3 mm	4 mm	8 mm
Colors					
Plain Colors					
<span style="color: green;">●</span> Majestic Green F (336)	NEW				

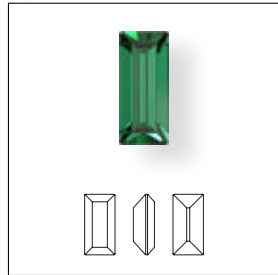
4470 Cushion Square Fancy Stone



Size 10 mm  
12 mm

Colors					
Plain Colors					
<span style="color: green;">●</span> Majestic Green F (336)	NEW				
Crystal Effects					
Crystal Lacquer <sup>PRO</sup> Effects					
Crystal Lacquer <sup>PRO</sup> Ignite Effects					
<span style="color: green;">●</span> Crystal Agave Ignite (001 L1651)	NEW				
<span style="color: grey;">●</span> Crystal Dark Grey Ignite (001 L1111)	NEW				
<span style="color: blue;">●</span> Crystal Denim Ignite (001 L1661)	NEW				
Crystal Electric Lacquer <sup>PRO</sup> Ignite Effects					
<span style="color: blue;">●</span> Crystal Electric Blue Ignite (001 L1341)	NEW				
<span style="color: pink;">●</span> Crystal Electric Pink Ignite (001 L1371)	NEW				
<span style="color: grey;">●</span> Crystal Electric White Ignite (001 L1391)	NEW				

4501 Baguette Fancy Stone



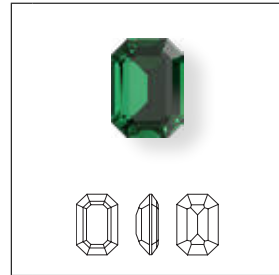
**Size**  
4x2 mm  
5x2.5 mm  
7x3 mm

**Colors**

**Plain Colors**

● Majestic Green F (336) **NEW**

4610 Curved Back Octagon Fancy Stone



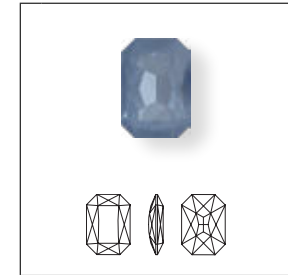
**Size**  
14x10 mm  
18x13 mm

**Crystal Effects**

**Transparent Effects**

● Majestic Green F (336) **NEW**

4627 Thin Octagon Fancy Stone



**Size**  
27x18.5 mm

**Crystal Effects**

**Crystal Lacquer<sup>PRO</sup> Effects**

**Crystal Lacquer<sup>PRO</sup> Ignite Effects**

● Crystal Agave Ignite (001 L165I) **NEW**

● Crystal Dark Grey Ignite (001 L111I) **NEW**

● Crystal Denim Ignite (001 L166I) **NEW**

**Crystal Electric Lacquer<sup>PRO</sup> Ignite Effects**

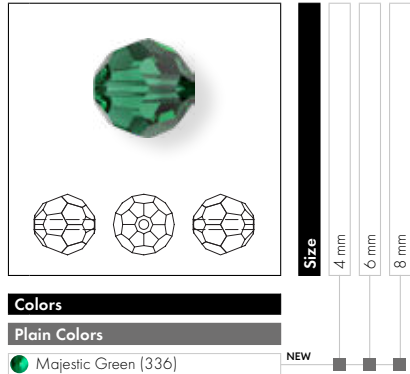
● Crystal Electric Blue Ignite (001 L134I) **NEW**

● Crystal Electric Pink Ignite (001 L137I) **NEW**

● Crystal Electric White Ignite (001 L139I) **NEW**

# Beads

5000 Classic Bead



Product details for the 5000 Classic Bead. The image shows a 3D rendering of a faceted green bead, three 2D line drawings of the bead from different angles, and a vertical size scale. The size scale has three bars labeled 4 mm, 6 mm, and 8 mm. Below the images are sections for 'Colors' and 'Plain Colors'. The 'Colors' section is a solid black bar. The 'Plain Colors' section is a grey bar with a green circle icon and the text 'Majestic Green (336)'. A 'NEW' label is positioned to the left of the 'Plain Colors' section.

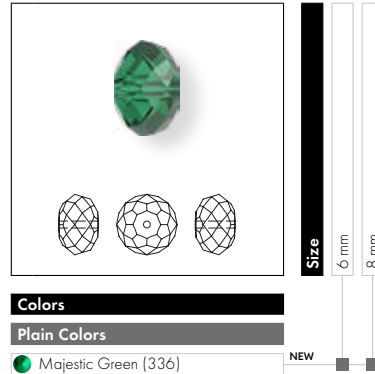
**Size**  
4 mm  
6 mm  
8 mm

**Colors**

**Plain Colors**  
Majestic Green (336)

NEW

5040 Briolette Bead



Product details for the 5040 Briolette Bead. The image shows a 3D rendering of a faceted green bead, three 2D line drawings of the bead from different angles, and a vertical size scale. The size scale has three bars labeled 6 mm, 8 mm, and 10 mm. Below the images are sections for 'Colors' and 'Plain Colors'. The 'Colors' section is a solid black bar. The 'Plain Colors' section is a grey bar with a green circle icon and the text 'Majestic Green (336)'. A 'NEW' label is positioned to the left of the 'Plain Colors' section.

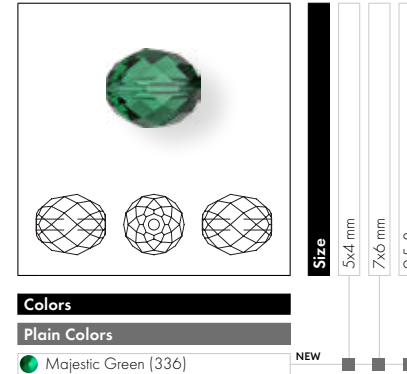
**Size**  
6 mm  
8 mm  
10 mm

**Colors**

**Plain Colors**  
Majestic Green (336)

NEW

5044 Olive Briolette Bead



Product details for the 5044 Olive Briolette Bead. The image shows a 3D rendering of a faceted green bead, three 2D line drawings of the bead from different angles, and a vertical size scale. The size scale has three bars labeled 5x4 mm, 7x6 mm, and 9.5x8 mm. Below the images are sections for 'Colors' and 'Plain Colors'. The 'Colors' section is a solid black bar. The 'Plain Colors' section is a grey bar with a green circle icon and the text 'Majestic Green (336)'. A 'NEW' label is positioned to the left of the 'Plain Colors' section.

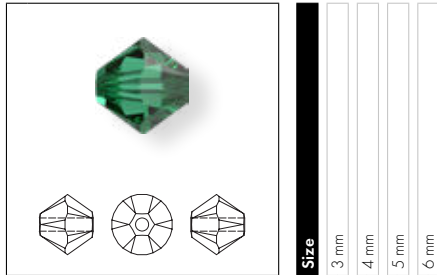
**Size**  
5x4 mm  
7x6 mm  
9.5x8 mm

**Colors**

**Plain Colors**  
Majestic Green (336)

NEW

5328 XILION Bead



Size
3 mm
4 mm
5 mm
6 mm

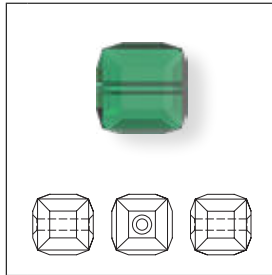
**Colors**

**Plain Colors**

- Majestic Green (336)



5601 Cube Bead



Size
4 mm
6 mm
8 mm

**Colors**

**Plain Colors**

- Majestic Green (336)



# Pendants

6000 Classic Drop Pendant



**Size**  
11x5.5 mm

**Colors**

**Plain Colors**

● Majestic Green (336)

NEW

6010 Briolette Pendant



**Size**  
11x5.5 mm  
13x6.5 mm

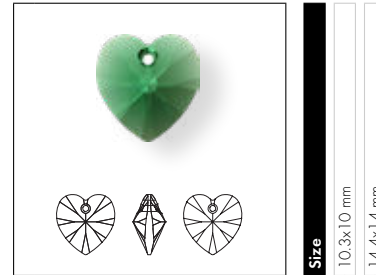
**Colors**

**Plain Colors**

● Majestic Green (336)

NEW

6228 XILION Heart Pendant



**Size**  
10.3x10 mm  
14.4x14 mm

**Colors**

**Plain Colors**

● Majestic Green (336)

NEW

6430 Classic Cut Pendant



**Size**  
8 mm  
10 mm

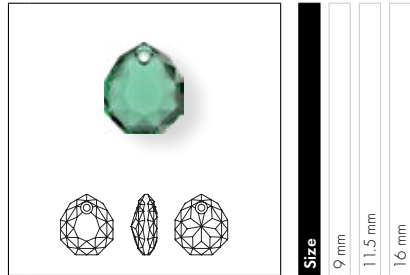
**Colors**

**Plain Colors**

● Majestic Green (336)

NEW

6436 Majestic Pendant



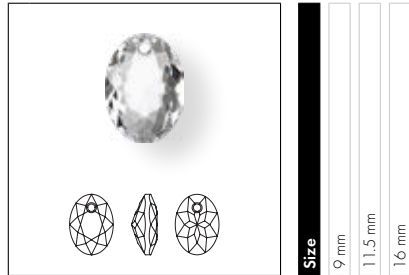
Colors

Plain Colors

- Majestic Green (336)

NEW

6438 Elliptic Cut Pendant <sup>NEW</sup>



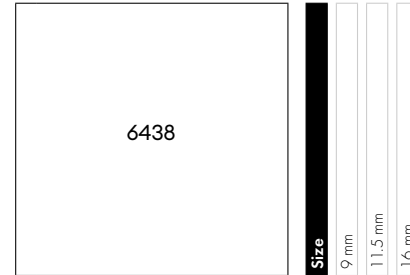
Crystal

- Crystal (001)

Colors

Plain Colors

- Amethyst (204)
- Aquamarine (202)
- Blue Zircon (229)
- Emerald (205)
- Light Amethyst (212)
- Light Rose (223)
- Peridot (214)
- Rose (209)
- Sapphire (206)
- Scarlet (276)
- Topaz (203)



Crystal Effects

Transparent Effects

- Crystal AB (001 AB)
- Crystal Shimmer (001 SHIM)
- Crystal Bermuda Blue P (001 BBL)<sup>1</sup>
- Crystal Golden Shadow (001 GSHA)
- Crystal Silver Night (001 SINI)
- Crystal Vitrail Light P (001 VL)<sup>1</sup>
- Crystal Vitrail Medium P (001 VM)<sup>1</sup>

<sup>1</sup> For details of the protective coating, please refer to the Collection 2023 chapter 'Basic Information'.

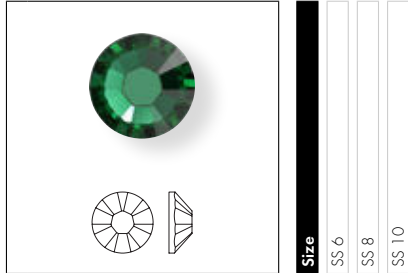


# Crystal Elements

Article Size	Packing Unit = Minimum Order Quantity in Pieces	Average Net Weight in Grams per Packing Unit Crystal (001)	Average Gross Weight in Grams per Packing Unit Crystal (001)
<b>3230</b>			
23x13.8 mm	36	67	95
34x20.4 mm	16	96	122
<b>4390</b>			
10x7 mm	144	45.3	70.4
14x10 mm	144	125.4	150.9
18x13 mm	48	87.4	111.8
<b>6438</b>			
9 mm	72	18.7	38.9
11.5 mm	48	28.3	48.5
16 mm	36	53.3	73.5

# Crystal Transfers

2038 XILION Rose Hotfix



Size	SS 6	SS 8	SS 10
Color			
Plain Colors			
Majestic Green A HF (336)	NEW		
Crystal Effects			
Crystal Lacquer <sup>PRO</sup> Effects			
Crystal Lacquer <sup>PRO</sup> Ignite Effects			
Crystal Agave Ignite HFT (001 L1651)	NEW		
Crystal Dark Grey Ignite HFT (001 L1111)	NEW		
Crystal Denim Ignite HFT (001 L1661)	NEW		
Crystal Electric Lacquer <sup>PRO</sup> Ignite Effects			
Crystal Electric Blue Ignite HFT (001 L1341)	NEW		
Crystal Electric Pink Ignite HFT (001 L1371)	NEW		
Crystal Electric White Ignite HFT (001 L1391)	NEW		

**Colors**

**Plain Colors**

Majestic Green A HF (336) NEW

**Crystal Effects**

**Crystal Lacquer<sup>PRO</sup> Effects**

**Crystal Lacquer<sup>PRO</sup> Ignite Effects**

Crystal Agave Ignite HFT (001 L1651) NEW

Crystal Dark Grey Ignite HFT (001 L1111) NEW

Crystal Denim Ignite HFT (001 L1661) NEW

**Crystal Electric Lacquer<sup>PRO</sup> Ignite Effects**

Crystal Electric Blue Ignite HFT (001 L1341) NEW

Crystal Electric Pink Ignite HFT (001 L1371) NEW

Crystal Electric White Ignite HFT (001 L1391) NEW

2078 Xirius Rose Hotfix



Size	SS 12	SS 16	SS 20	SS 34
Color				
Plain Colors				
Majestic Green A HF (336)	NEW			
Crystal Effects				
Crystal Lacquer <sup>PRO</sup> Effects				
Crystal Lacquer <sup>PRO</sup> Ignite Effects				
Crystal Agave Ignite HFT (001 L1651)	NEW			
Crystal Dark Grey Ignite HFT (001 L1111)	NEW			
Crystal Denim Ignite HFT (001 L1661)	NEW			
Crystal Electric Lacquer <sup>PRO</sup> Ignite Effects				
Crystal Electric Blue Ignite HFT (001 L1341)	NEW			
Crystal Electric Pink Ignite HFT (001 L1371)	NEW			
Crystal Electric White Ignite HFT (001 L1391)	NEW			

**Colors**

**Plain Colors**

Majestic Green A HF (336) NEW

**Crystal Effects**

**Crystal Lacquer<sup>PRO</sup> Effects**

**Crystal Lacquer<sup>PRO</sup> Ignite Effects**

Crystal Agave Ignite HFT (001 L1651) NEW

Crystal Dark Grey Ignite HFT (001 L1111) NEW

Crystal Denim Ignite HFT (001 L1661) NEW

**Crystal Electric Lacquer<sup>PRO</sup> Ignite Effects**

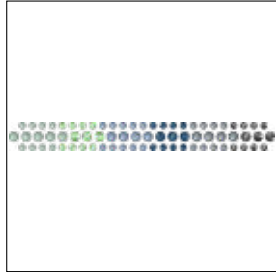
Crystal Electric Blue Ignite HFT (001 L1341) NEW

Crystal Electric Pink Ignite HFT (001 L1371) NEW

Crystal Electric White Ignite HFT (001 L1391) NEW

## Standard Collection

13 475



**C** 001L166/001L165/001L111/  
001SINI/238/266/001L165/  
001L166/001L111/001SINI/  
238/266

---

**E** S10/S10/S10/S10/S10/S10/  
S16/S16/S16/S16/S16/S16

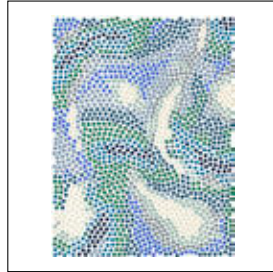
---

**S** 103x11

---

**M** 40 PCS **34%**

13 489



**C** 336/266/243NIFA/206/  
001L166/001L164/001L165/  
001L111/207

---

**E** S10/S10/S10/S10/S10/S10/  
S10/S10/S10

---

**S** ~120x159

---

**M** 3 PCS **20%**

13 490



**C** R9005-327/336/262/257/  
1001/360/001L137S/261

---

**E** M2.5-S10/S10/S10/S10/S10/  
S10/S10/S10

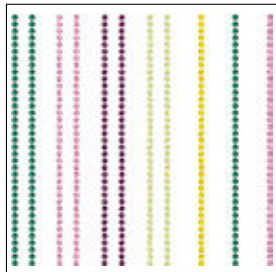
---

**S** ~129x170

---

**M** 7 PCS **20%**

13 491



**C** 212/336/213/204/226

---

**E** S16/S16/S16/S16/S16

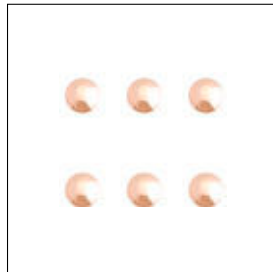
---

**S** ~172x166

---

**M** 5 PCS **20%**

13 492



**C** 001GSHA

---

**E** P5

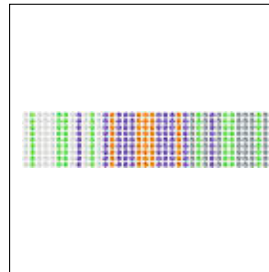
---

**S** ~978x17 (121 SEG/ROW)

---

**R** 6 ROWS **100%**

13 493



**C** 539/214/001L111/001L139/  
203

---

**E** S10/S10/S10/S10/S10

---

**S** ~129x29

---

**M** 15 PCS **25%**

# Crystal Textures

## Product Feature: Colorful mixtures for Crystal Fine Rocks

With complete design flexibility becoming mainstream, and creative innovation for styles combining the raw and the refined, the ability to craft bespoke color mixtures creates a highly personalized element for any design undertaking.

Overview of available colorful mixtures

74 000 onward

**Color of Film**

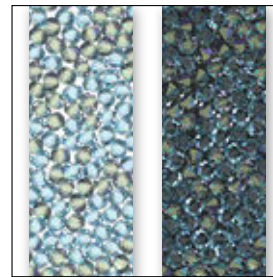
010 Transparent (Hoffix; C\_Coldfix; Removable Foil; \_IT)

012 Black (Hoffix; C\_Coldfix; \_IT)

**Multicolors**

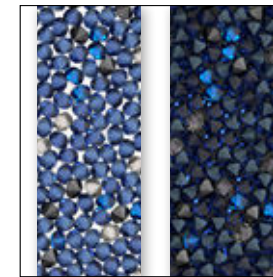
- Aquamarine & Crystal Paradise Shine (202 M155)
- Dark Sapphire Nightfall & Crystal Moonlight & Crystal Bermuda Blue (255 M156)
- Vintage Rose & Crystal Golden Shadow & Crystal Matalic Sunshine (319 M148)
- Vintage Rose & Crystal Golden Shadow & Crystal Matalic Sunshine & Crystal Metallic Light Gold (319 M158)
- Erinite & Crystal Shimmer & Crystal Heliotrope & Crystal Paradise Shine & Crystal Bermuda Blue (360 M150)

Aquamarine & Crystal Paradise Shine (202 M155)



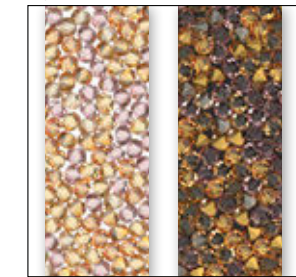
010 Transparent 012 Black

Dark Sapphire Nightfall & Crystal Moonlight & Crystal Bermuda Blue (255 M156)



010 Transparent 012 Black

Vintage Rose & Crystal Golden Shadow & Crystal Matalic Sunshine (319 M148)



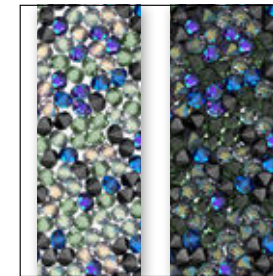
010 Transparent 012 Black

Vintage Rose & Crystal Golden Shadow & Crystal Matalic Sunshine & Crystal Metallic Light Gold (319 M158)



010 Transparent 012 Black

Erinite & Crystal Shimmer & Crystal Heliotrope & Crystal Paradise Shine & Crystal Bermuda Blue (360 M150)



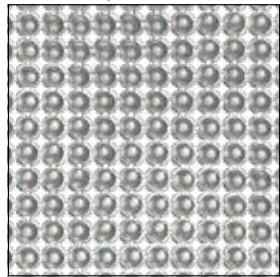
010 Transparent 012 Black

# Linked Crystal Components

## New Product: Crystal Caviar Mesh

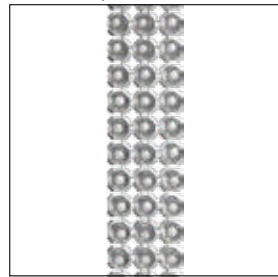
The subtle brilliance of the exquisitely tactile Crystal Caviar Mesh creates designs of pure sophistication. With its velvety look cascading over silhouettes, the luxurious shimmering format reflects light in a delicate new way, creating the ideal element for our renewed love affair with nostalgic form-fitting designs.

40 500 Crystal Caviar Mesh <sup>NEW</sup>



**SH** 100  
**S** ~500x200  
**E** 3495 MM2.5  
**M** 1 SH **100%**

40 501 Crystal Caviar Mesh <sup>NEW</sup>



**R** 003-033  
**E** 3495 MM2.5  
**M** 10 M **100%**

40 500	SH	S	E	M	100%
Article number	Sheet	Sheet size in mm	Elements Crystal and stone size used	Minimum order quantity in sheets (SH)	% of actual size
40 501	R	E	M	100%	
Article number	Number of rows This article is available from 3 to 33 rows.	Elements Crystal and stone size used	Minimum order quantity in meters (M)	% of actual size	

**Ordering Example & Product Variety Explanation**

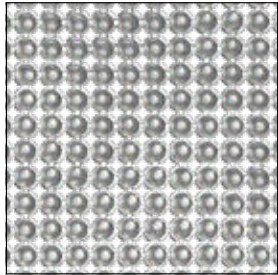
40 500	100	081	001	NOHF
Article number	Sheet	Color of casing	Color of crystal	Hotfix Technology
	100 Standard sheet (-500x200 mm)	012 Black 081 Gold <sup>1</sup> 082 Silver <sup>1</sup> R1018 Zinc Yellow <sup>2</sup> R4010 Telemagenta <sup>2</sup> R5002 Marine Blue <sup>2</sup>		NOHF Without Hotfix Glue / With Hotfix Glue
40 501	003	081	001	NOHF
Article number	3-digit code for number of rows	Color of casing	Color of crystal	Hotfix Technology
		012 Black 081 Gold <sup>1</sup> 082 Silver <sup>1</sup> R1018 Zinc Yellow <sup>2</sup> R4010 Telemagenta <sup>2</sup> R5002 Marine Blue <sup>2</sup>		NOHF Without Hotfix Glue / With Hotfix Glue

<sup>1</sup> Base material for 081 Gold and 082 Silver-colored casing: brass

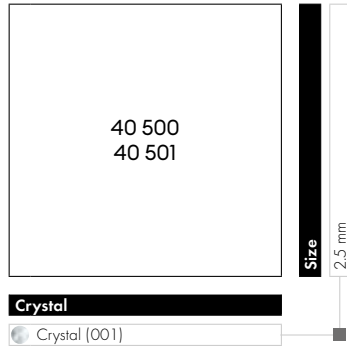
<sup>2</sup> Base material for RAL-colored casing: aluminum



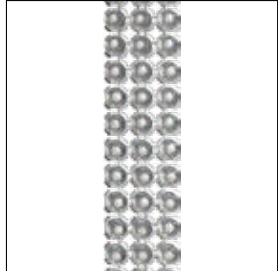
40 500 Crystal Caviar Mesh <sup>NEW</sup>



**SH** 100  
**S** ~500x200  
**E** 3495 MM2.5  
**M** 1 SH **100%**



40 501 Crystal Caviar Mesh <sup>NEW</sup>



**R** 003-033  
**E** 3495 MM2.5  
**M** 10 M **100%**

### Available Casing Colors

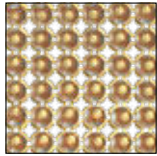
Crystal Caviar Mesh is available as standard with gold, silver and black-colored casings, as well as the RAL colors Zinc Yellow (R1018), Telemagenta (R4010) and Marine Blue (R5002).

All further RAL Classic and RAL Design Colors are possible as customized solution.

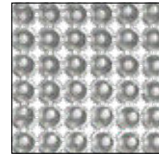
Please note that due to UV sensitivity, white is not offered. Silver and light colors are not recommended for daily usage outdoors.



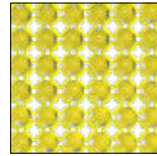
012 Black



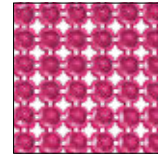
081 Gold



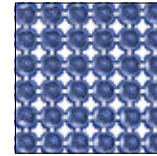
082 Silver



R1018  
Zinc Yellow



R4010  
Telemagenta



R5002  
Marine Blue

### Application Instruction for Crystal Caviar Mesh

Focus segments: Apparel, Accessories, Footwear.

Same application as for other Crystal Mesh products: Hotfix application, sewing or gluing.

Care must be taken during sewing application to apply little pressure with the sewing foot.

Crystal Caviar Mesh comes with double foil, strengthening the adhesion between the crystal balls and the transfer film: still remain careful when cutting the foil not to lose the adhesion between any crystal.

### Care Instruction for Crystal Caviar Mesh



Turn inside out and use mild laundry detergent.



Do not use chlorine bleach!



Do not tumble dry!



Do not iron!



The textile can be gently drycleaned using hydrocarbon. Turn inside out.



The textile will withstand gentle professional wet cleaning. Turn inside out.

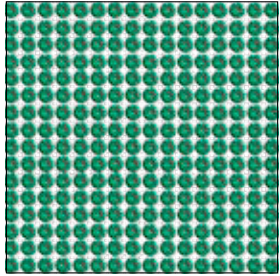
Wash by hand: max. temperature 30 °C (86 °F), very mild process.

To protect the crystals as much as possible, the use of a soft wash bag is recommended.

Find more detailed information on above mentioned application methods and care instructions in the Application Manual on SIA.

## Crystal Mesh Standard

40 000



SH 100  
 S ~500x200  
 E 1088 PP21  
 M 1 SH 100%

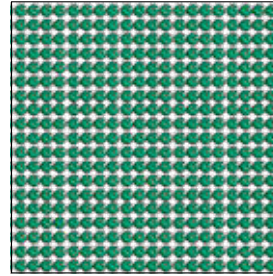


**Colors**  
 Plain Colors  
 ● Majestic Green F (336) NEW

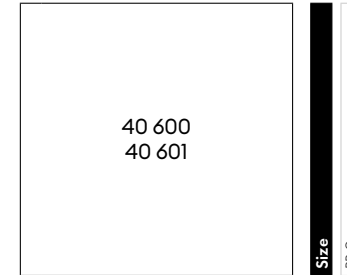
Size  
 PP 21

## Crystal Fine Mesh

40 600



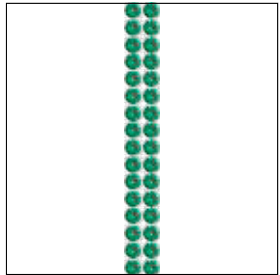
SH 100  
 S ~500x200  
 E 1028 PP 9  
 M 1 SH 100%



**Colors**  
 Plain Colors  
 ● Majestic Green F (336) NEW

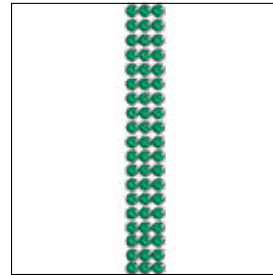
Size  
 PP 9

40 001



R 002-033  
 E 1088 PP21  
 M 10 M 100%

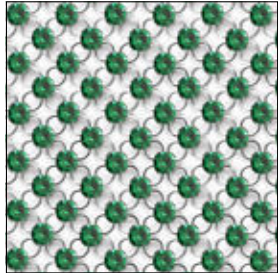
40 601



R 003-033  
 E 1028 PP 9  
 M 10 M 100%

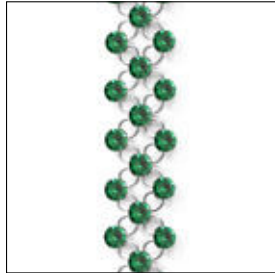
## Crystal Light Mesh & Crystal Light Mesh Mini

40 900 Crystal Light Mesh

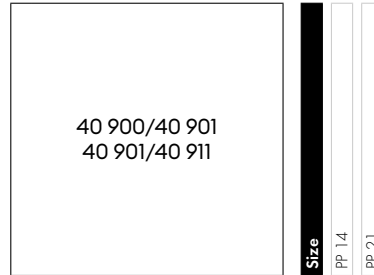


SH 100  
 S ~500x195  
 E 1088 PP21  
 M 1 SH **100%**

40 901 Crystal Light Mesh



R 003-010  
 E 1088 PP21  
 M 10 M **100%**

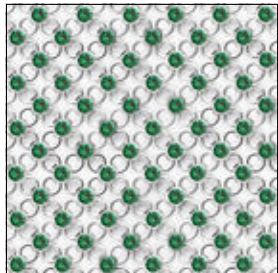


**Colors**

**Plain Colors**

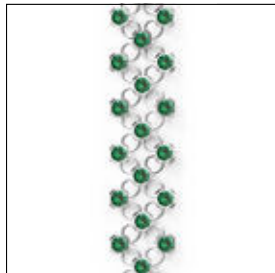
● Majestic Green F (336) NEW

40 910 Crystal Light Mesh Mini



SH 100  
 S ~500x200  
 E 1088 PP14  
 M 1 SH **100%**

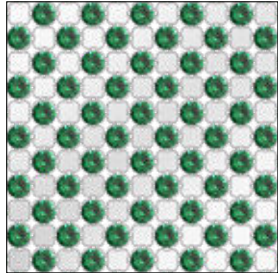
40 911 Crystal Light Mesh Mini



R 003-010  
 E 1088 PP14  
 M 10 M **100%**

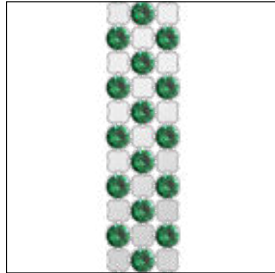
## Crystal Mesh Colorée & Crystal Mesh Colorée Mini

40 200 Crystal Mesh Colorée



SH 100  
 S ~500x200  
 E 1088 PP21  
 M 1 SH **100%**

40 201 Crystal Mesh Colorée



R 003-010  
 E 1088 PP21  
 M 10 M **100%**

40 200/40 201  
40 210/40 211

**Size**

PP 14

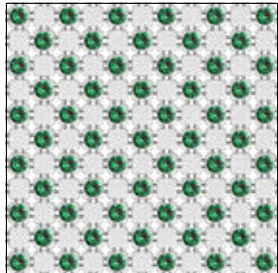
PP 21

**Colors**

Plain Colors

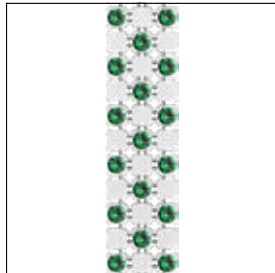
● Majestic Green F (336) NEW

40 210 Crystal Mesh Colorée Mini



SH 100  
 S ~500x200  
 E 1088 PP14  
 M 1 SH **100%**

40 211 Crystal Mesh Colorée Mini



R 003-010  
 E 1088 PP14  
 M 10 M **100%**

## Cupchains

27 004 Round (Z)

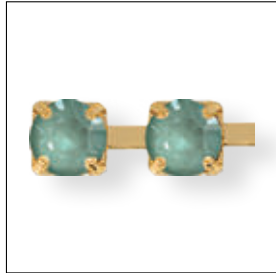


**E** 1028/1088  
**M** 20 M **250%<sup>1</sup>**

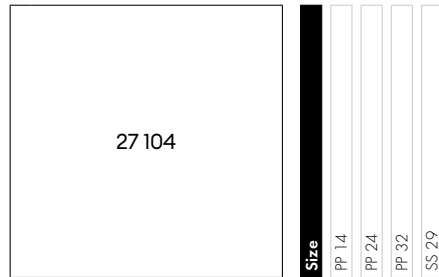
27 004	<b>Size</b>	PP 11	PP 14	PP 18	PP 24	PP 32	SS 24
	<b>Colors</b>						
	<b>Plain Colors</b>						
	<b>NEW</b>	<input checked="" type="checkbox"/>	<input type="checkbox"/>	<input type="checkbox"/>	<input type="checkbox"/>	<input type="checkbox"/>	<input type="checkbox"/>
		<input type="checkbox"/>	<input type="checkbox"/>	<input type="checkbox"/>	<input type="checkbox"/>	<input type="checkbox"/>	<input type="checkbox"/>
		<input type="checkbox"/>	<input type="checkbox"/>	<input type="checkbox"/>	<input type="checkbox"/>	<input type="checkbox"/>	<input type="checkbox"/>

<sup>1</sup> The picture shows size SS 29

27 104 Round Extended (Z)



E 1088  
M 20 M 150%<sup>1</sup>



**Colors**

**Plain Colors**

Majestic Green F (336) NEW

**Crystal Effects**

**Crystal Lacquer<sup>PRO</sup> Effects**

**Crystal Lacquer<sup>PRO</sup> Ignite Effects**

Crystal Agave Ignite (001 L1651) NEW

Crystal Dark Grey Ignite (001 L1111) NEW

Crystal Denim Ignite (001 L1661) NEW

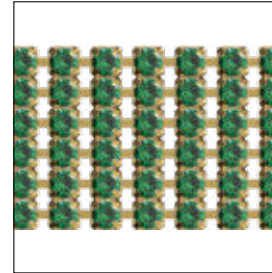
**Crystal Electric Lacquer<sup>PRO</sup> Ignite Effects**

Crystal Electric Blue Ignite (001 L1341) NEW

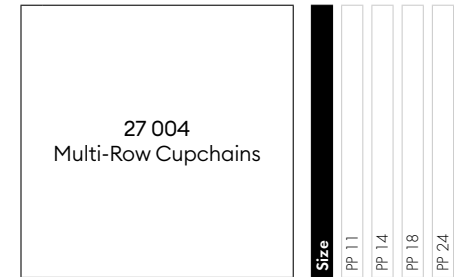
Crystal Electric Pink Ignite (001 L1371) NEW

Crystal Electric White Ignite (001 L1391) NEW

27 004 Multi-Row Cupchains



R 02-10  
E 1028/1088  
M 5 M 200%<sup>2</sup>

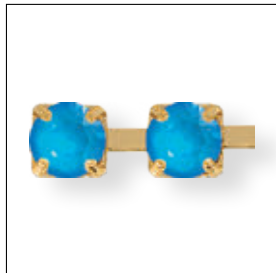


**Colors**

**Plain Colors**

Majestic Green F (336) NEW

27 104 Round Extended (H)



E 1088  
M 10 M 150%<sup>1</sup>

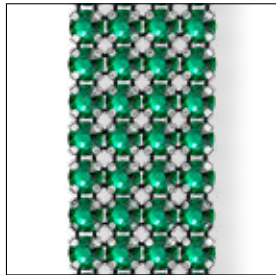
<sup>1</sup> The picture shows size SS 29

<sup>2</sup> The picture shows size PP 11



## Flat Back Bandings

55 000



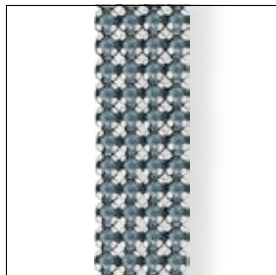
R 001-024  
E 2088 SS 20  
M 10 M **100%**

55 001<sup>1</sup>



R 001  
E 2088 SS 20  
M 10 M **100%**

55 500

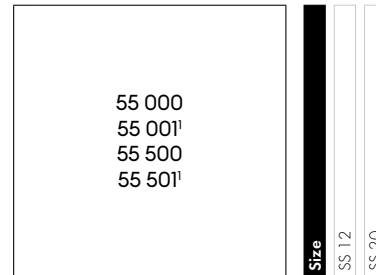


R 001-024  
E 2088 SS 12  
M 10 M **100%**

55 501<sup>1</sup>



R 001  
E 2088 SS 12  
M 10 M **100%**



Colors	
Plain Colors	
	Majestic Green F (336) <b>NEW</b>
Crystal Effects	
Crystal Lacquer <sup>PRO</sup> Effects	
Crystal Lacquer <sup>PRO</sup> Ignite Effects	
	Crystal Agave Ignite (001 L165I) <b>NEW</b>
	Crystal Dark Grey Ignite (001 L111I) <b>NEW</b>
	Crystal Denim Ignite (001 L166I) <b>NEW</b>
Crystal Electric Lacquer <sup>PRO</sup> Ignite Effects	
	Crystal Electric Blue Ignite (001 L134I) <b>NEW</b>
	Crystal Electric Pink Ignite (001 L137I) <b>NEW</b>
	Crystal Electric White Ignite (001 L139I) <b>NEW</b>

<sup>1</sup> Art. 55 001/55 501 is not available with net edge. When ordering one row with net edge, art. 55 000/55 500 should be used.

# Crystal Rivets & Rose Pins

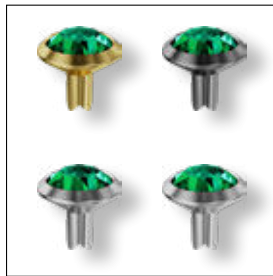
## Rivets

53 001 Rivets



**E** 1088 SS 29  
**M** 500 PCS **120%**

53 005 Rivets



**E** 1088 SS 34  
**M** 500 PCS **120%**

53 006 Rivets



**E** 1088 SS 39  
**M** 300 PCS **120%**

	SS 29	SS 34	SS 39
53 001 53 005 53 006			
<b>Colors</b>			
<b>Plain Colors</b>			
● Majestic Green F (336)	NEW	■	■
<b>Crystal Effects</b>			
<b>Crystal Lacquer<sup>PRO</sup> Effects</b>			
<b>Crystal Lacquer<sup>PRO</sup> Ignite Effects</b>			
● Crystal Agave Ignite (001 L165I)	NEW	■	■
● Crystal Dark Grey Ignite (001 L111I)	NEW	■	■
● Crystal Denim Ignite (001 L166I)	NEW	■	■
<b>Crystal Electric Lacquer<sup>PRO</sup> Ignite Effects</b>			
● Crystal Electric Blue Ignite (001 L134I)	NEW	■	■
● Crystal Electric Pink Ignite (001 L137I)	NEW	■	■
● Crystal Electric White Ignite (001 L139I)	NEW	■	■

## Rose Pins

53 301 Rose Pins



**E** 2038 SS 10  
**M** 1,440 PCS **250%**

53 302 Rose Pins



**E** 2078 SS 16  
**M** 1,440 PCS **250%**

53 303 Rose Pins



**E** 2078 SS 20  
**M** 720 PCS **250%**

53 304 Rose Pins



**E** 2078 SS 34  
**M** 288 PCS **250%**

	SS 10	SS 16	SS 20	SS 34
53 301				
53 302				
53 303				
53 304				
<b>Colors</b>				
<b>Plain Colors</b>				
Majestic Green F (336)	NEW			
<b>Crystal Effects</b>				
<b>Crystal Lacquer<sup>PRO</sup> Effects</b>				
<b>Crystal Lacquer<sup>PRO</sup> Ignite Effects</b>				
Crystal Agave Ignite (001 L165I)	NEW			
Crystal Dark Grey Ignite (001 L111I)	NEW			
Crystal Denim Ignite (001 L166I)	NEW			
<b>Crystal Electric Lacquer<sup>PRO</sup> Ignite Effects</b>				
Crystal Electric Blue Ignite (001 L134I)	NEW			
Crystal Electric Pink Ignite (001 L137I)	NEW			
Crystal Electric White Ignite (001 L139I)	NEW			

# Crystal Design Inspiration Collection

## Innovations Patches

### Design Inspiration Patches

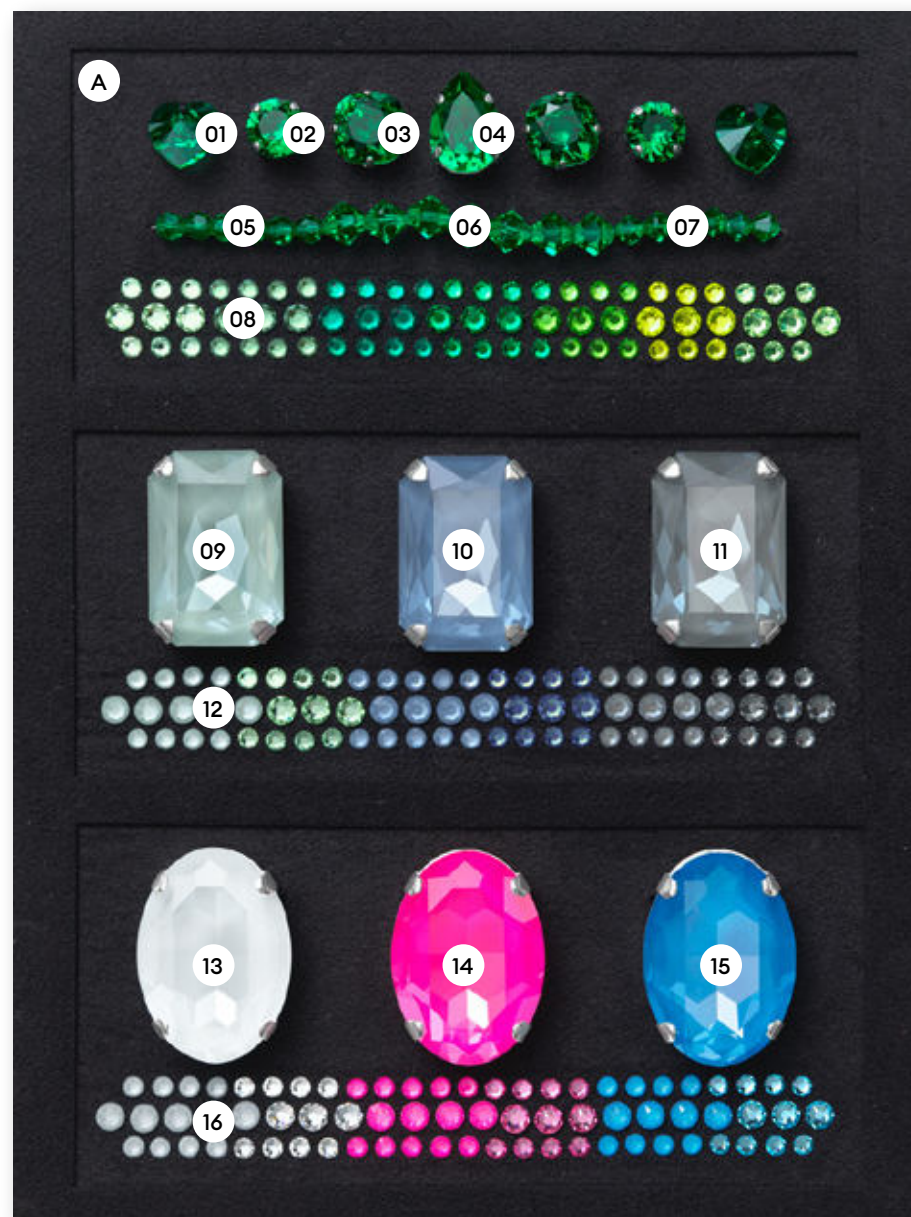
- Classics Interrupted
- Mystical Creatures
- Bohemian Wilderness
- Vintage Elegance

**CRYSTAL**

- 01 **NEW 6228** 10.3x10 mm Majestic Green (336)
- 02 **NEW 1088** SS39 Majestic Green F (336)
- 03 **NEW 4470** 10 mm Majestic Green F (336)
- 04 **NEW 4320** 14x10 mm Majestic Green F (336)
- 05 **NEW 5000** 4 mm Majestic Green (336)
- 06 **NEW 5328** 6 mm Majestic Green (336)
- 07 **NEW 5328** 4 mm Majestic Green (336)
- 08 **947599** Crystal Transfers Motif 336/205/360/214/337/291/238/214/337/291/336/205/360/238
- 09 **NEW 4627** 27x18.5 mm Crystal Agave Ignite (001 L165I)
- 10 **NEW 4627** 27x18.5 mm Crystal Denim Ignite (001 L166I)
- 11 **NEW 4627** 27x18.5 mm Crystal Dark Grey Ignite (001 L111I)
- 12 **945035** Crystal Transfers Motif 001L166I/001L165I/001L111I/001SINI/238/266/001L165I/001L166I/001L111I/001SINI/238/266
- 13 **NEW 4127** 30x22 mm Crystal Electric White Ignite (001 L139I)
- 14 **NEW 4127** 30x22 mm Crystal Electric Pink Ignite (001 L137I)
- 15 **NEW 4127** 30x22 mm Crystal Electric Blue Ignite (001 L134I)
- 16 **945035** Crystal Transfers Motif 001L137I/001L139I/001L134I/202/001/209/001L139I/001L137I/001L134I/202/001/209

**MATERIAL**

- A Alcantara ®

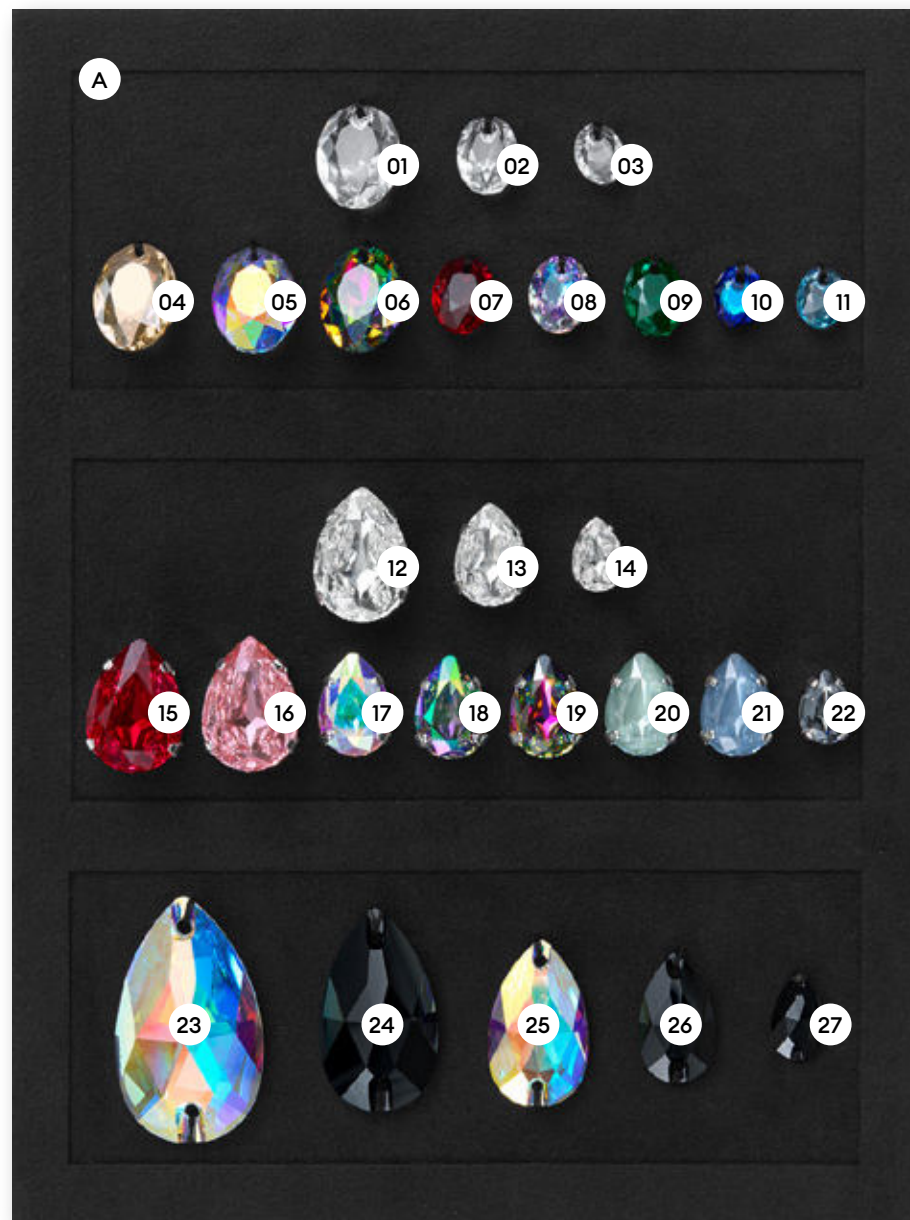


**CRYSTAL**

01	<b>NEW 6438</b> 16 mm Crystal (001)	16	<b>NEW 4390</b> 18x13 mm Light Rose F (223)
02	<b>NEW 6438</b> 11.5 mm Crystal (001)	17	<b>NEW 4390</b> 14x10 mm Crystal AB F (001 AB)
03	<b>NEW 6438</b> 9 mm Crystal (001)	18	<b>NEW 4390</b> 14x10 mm Crystal Paradise Shine F (001 PARSH)
04	<b>NEW 6438</b> 16 mm Crystal Golden Shadow (001 GSHA)	19	<b>NEW 4390</b> 14x10 mm Crystal Vitrail Medium F (001 VM)
05	<b>NEW 6438</b> 16 mm Crystal AB (001 AB)	20	<b>NEW 4390</b> 14x10 mm Crystal Agave Ignite (001 L1651)
06	<b>NEW 6438</b> 16 mm Crystal Vitrail Medium P (001 VM)	21	<b>NEW 4390</b> 14x10 mm Crystal Denim Ignite (001 L1661)
07	<b>NEW 6438</b> 11.5 mm Scarlet (276)	22	<b>NEW 4390</b> 10x7 mm Crystal Silver Night F (001 SINI)
08	<b>NEW 6438</b> 11.5 mm Crystal Vitrail Light P (001 VL)	23	<b>NEW 3230</b> 34x20.4 mm Crystal AB F (001 AB)
09	<b>NEW 6438</b> 11.5 mm Emerald (205)	24	<b>3230</b> 28x17 mm Jet (280)
10	<b>NEW 6438</b> 9 mm Crystal Bermuda Blue P (001 BB)	25	<b>NEW 3230</b> 23x13.8 mm Crystal AB F (001 AB)
11	<b>NEW 6438</b> 9 mm Aquamarine (202)	26	<b>3230</b> 18x10.5 mm Jet (280)
12	<b>NEW 4390</b> 18x13 mm Crystal F (001)	27	<b>3230</b> 12x7 mm Jet (280)
13	<b>NEW 4390</b> 14x10 mm Crystal F (001)		
14	<b>NEW 4390</b> 10x7 mm Crystal F (001)		
15	<b>NEW 4390</b> 18x13 mm Scarlet F (276)		

**MATERIAL**

A Alcantara ®

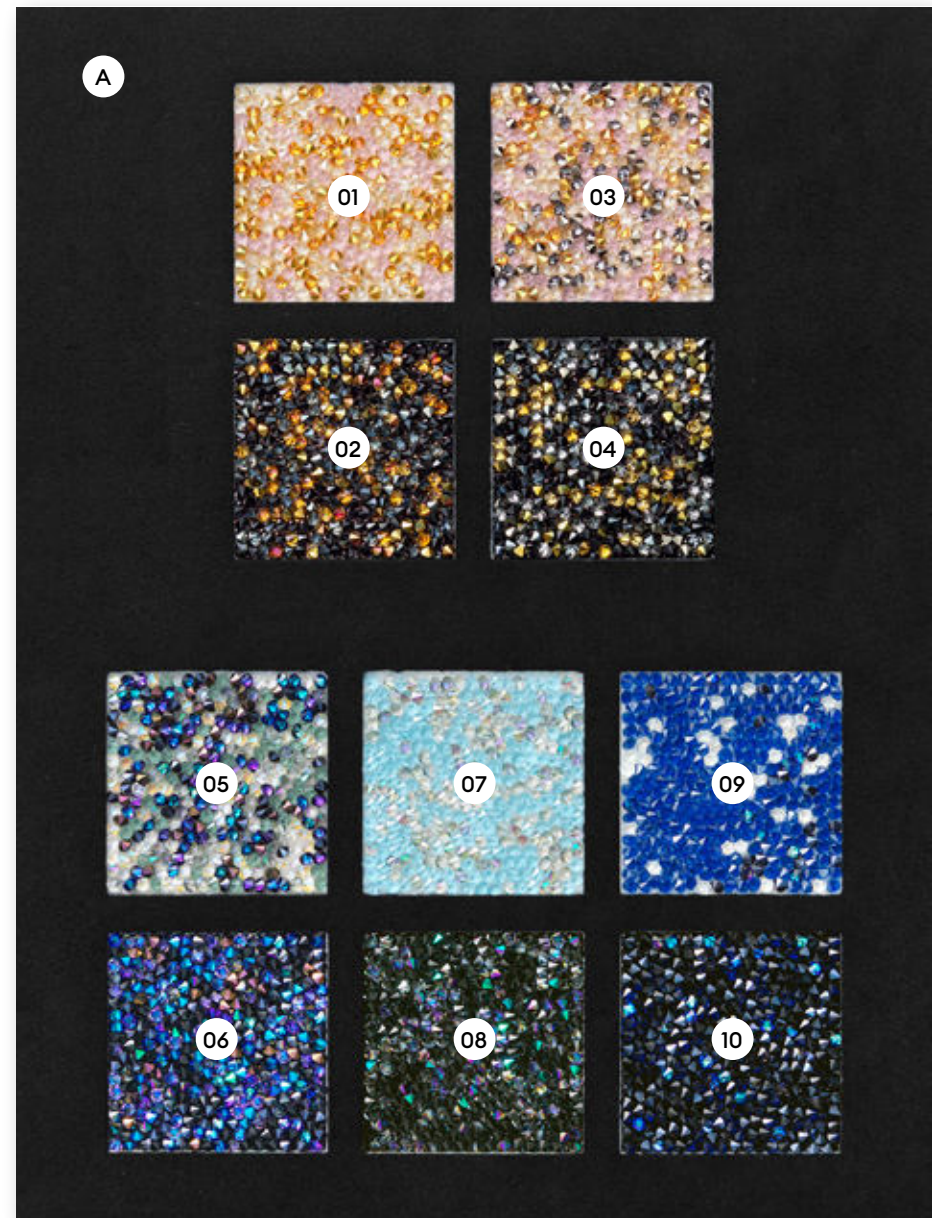


**CRYSTAL**

- 01 **NEW 74110** Crystal Fine Rocks Colorful Mixtures 010 319M148
- 02 **NEW 74110** Crystal Fine Rocks Colorful Mixtures 012 319M148
- 03 **NEW 74110** Crystal Fine Rocks Colorful Mixtures 010 319M158
- 04 **NEW 74110** Crystal Fine Rocks Colorful Mixtures 012 319M158
- 05 **NEW 74110** Crystal Fine Rocks Colorful Mixtures 010 360M150
- 06 **NEW 74110** Crystal Fine Rocks Colorful Mixtures 012 360M150
- 07 **NEW 74110** Crystal Fine Rocks Colorful Mixtures 010 202M155
- 08 **NEW 74110** Crystal Fine Rocks Colorful Mixtures 012 202M155
- 09 **NEW 74110** Crystal Fine Rocks Colorful Mixtures 010 255M156
- 10 **NEW 74110** Crystal Fine Rocks Colorful Mixtures 012 255M156

**MATERIAL**

- A Alcantara®



**CRYSTAL**

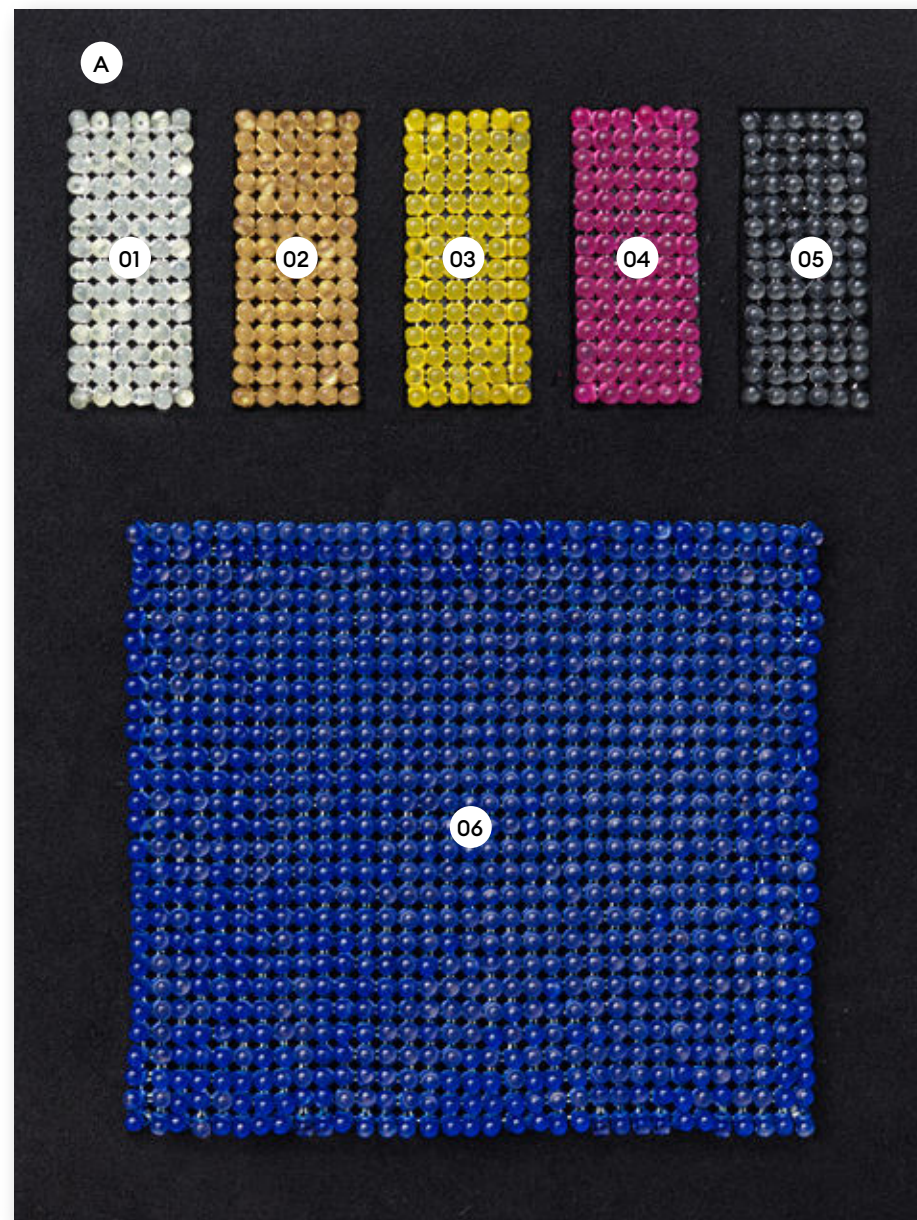
---

- 01 **NEW 40500** Crystal Caviar Mesh 100 082 001
- 02 **NEW 40500** Crystal Caviar Mesh 100 081 001
- 03 **NEW 40500** Crystal Caviar Mesh 100 R1018 001
- 04 **NEW 40500** Crystal Caviar Mesh 100 R4010 001
- 05 **NEW 40500** Crystal Caviar Mesh 100 012 001
- 06 **NEW 40500** Crystal Caviar Mesh 100 R5002 001

**MATERIAL**

---

- A Alcantara®



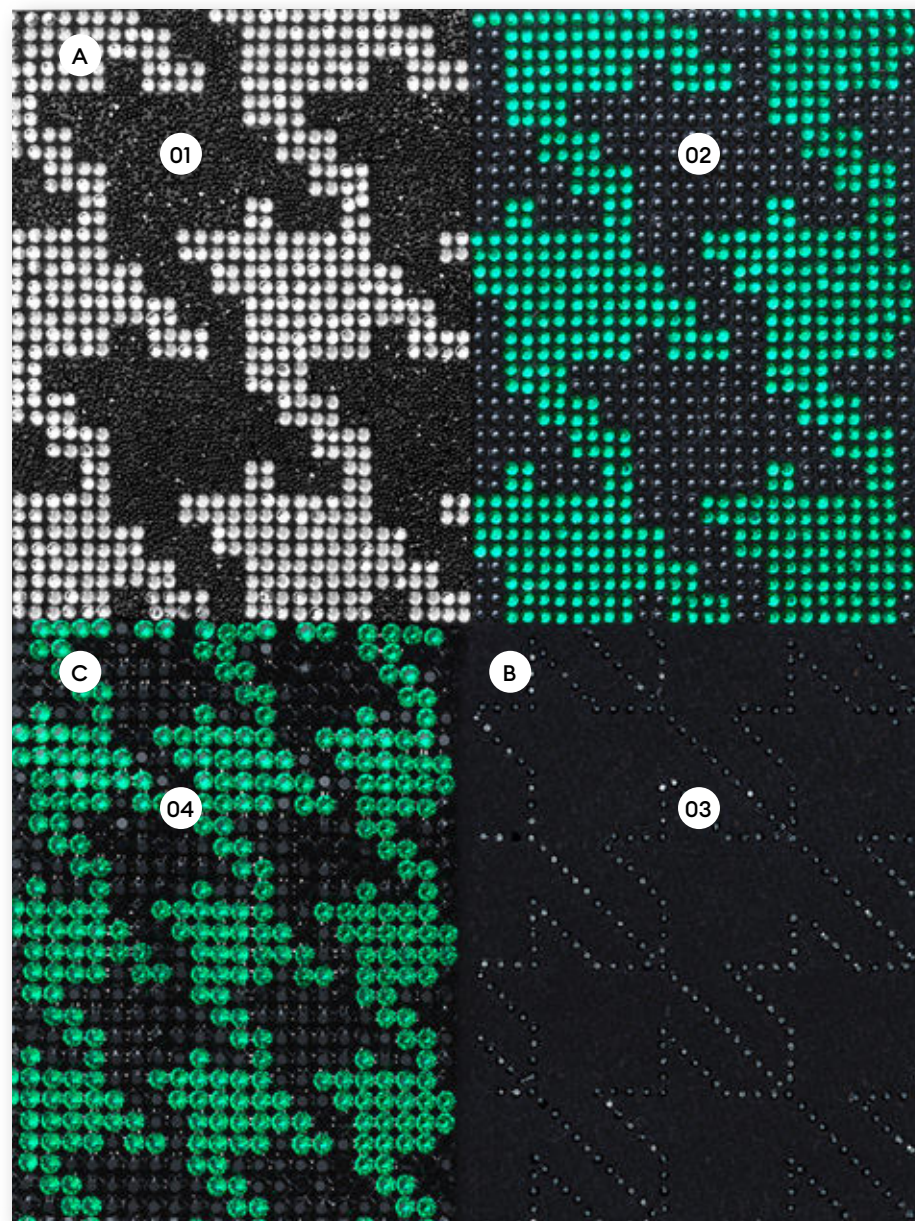


**CRYSTAL**

- 01 **411463** Crystal Intarsia Motif 012-280HEM/001
- 02 **947357** Crystal Transfers Motif 280/336
- 03 **947358** Crystal Transfers Motif 280HEM
- 04 **548613** Crystal Mesh Motif 012-280/336

**MATERIAL**

- A Alcantara ® (on the back side)
- B Woolen Fabric
- C Tulle



**CRYSTAL**

- 01 947508 Crystal Transfers Motif 001L1391/001HFT
- 02 6225 10 mm Crystal (001)
- 03 6225 18 mm Crystal (001)
- 04 6225 28 mm Crystal (001)
- 05 NEW 1088 PP32 Majestic Green F (336)
- 06 NEW 4390 10x7 mm Crystal F (001)
- 07 NEW 4320 14x10 mm Majestic Green F (336)
- 08 1383 8 mm Golden Topaz F (1003)
- 09 NEW 4390 14x10 mm Crystal F (001)
- 10 NEW 4127 30x22 mm Crystal Electric Blue Ignite (001 L1341)
- 11 1028 PP3 Crystal F (001)
- 12 NEW 4470 10 mm Majestic Green F (336)
- 13 4228 8x4 mm Peridot F (214)
- 14 4228 6x3 mm Citrus Green F (337)
- 15 4228 4x2 mm Chrysolite F (238)
- 16 NEW 1088 SS 39 Crystal Denim Ignite (001 L1661)
- 17 4139 14 mm Crystal Volcano (001 VOL)
- 18 6049 30 mm Crystal (001)

**MATERIAL**

- A Alcantara ® (on the back side)
- B Polyester
- C Cotton
- D Cotton Taffeta Ribbon - Shindo Textile Europe GmbH
- E Metal Part

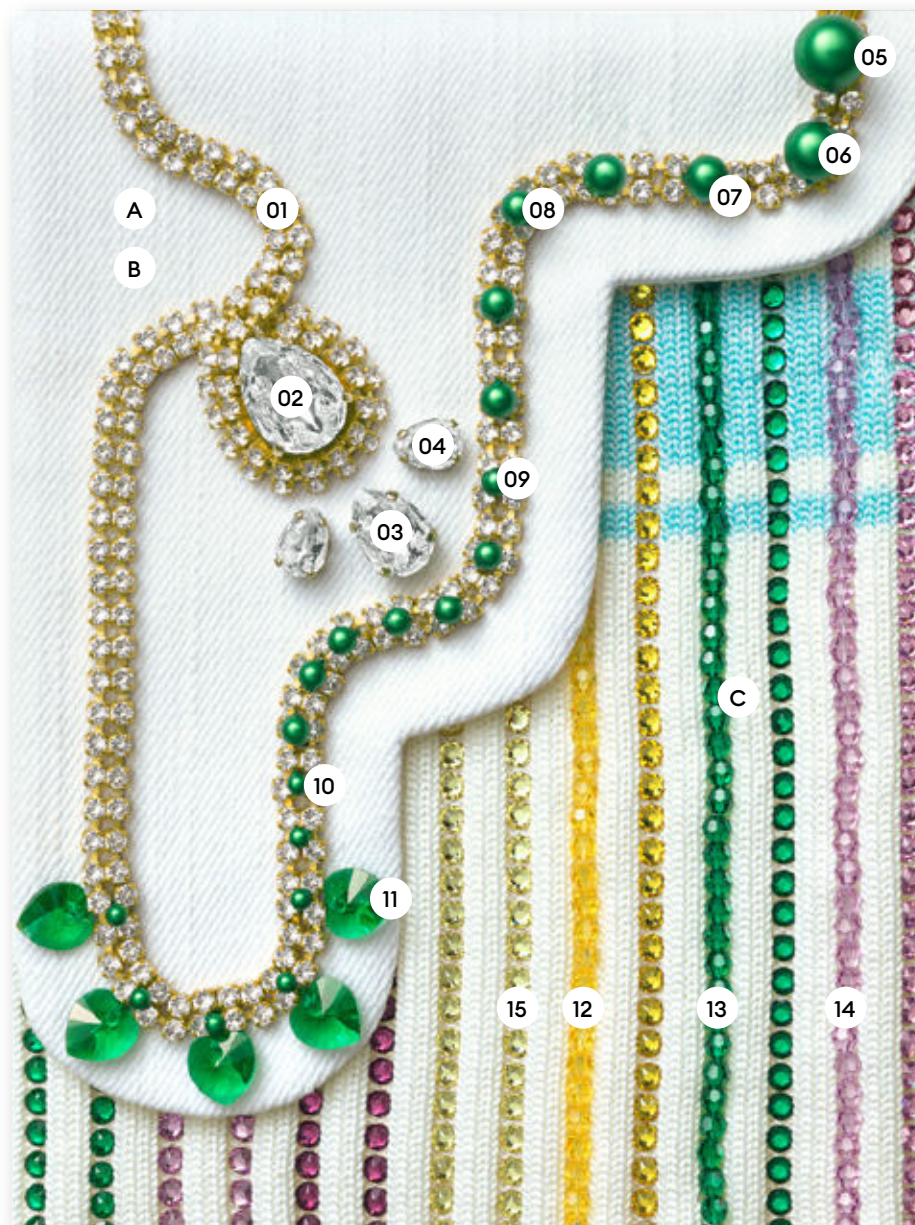


**CRYSTAL**

- 01 **127004** Crystal Multi-Row Cupchains P2402C KIZ 1088 F 001 (Crystal)
- 02 **NEW 4390** 18x13 mm Crystal F (001)
- 03 **NEW 4390** 14x10 mm Crystal F (001)
- 04 **NEW 4390** 10x7 mm Crystal F (001)
- 05 **5810** 10 mm Crystal Eden Green Pearl (001 2014)
- 06 **5810** 8 mm Crystal Eden Green Pearl (001 2014)
- 07 **5810** 6 mm Crystal Eden Green Pearl (001 2014)
- 08 **5810** 5 mm Crystal Eden Green Pearl (001 2014)
- 09 **5810** 4 mm Crystal Eden Green Pearl (001 2014)
- 10 **5810** 3 mm Crystal Eden Green Pearl (001 2014)
- 11 **NEW 6228** 10.3x10 mm Majestic Green (336)
- 12 **5000** 4 mm Light Topaz (226)
- 13 **NEW 5000** 4 mm Majestic Green (336)
- 14 **5000** 4 mm Light Amethyst (212)
- 15 **947569** Crystal Transfers Motif 212/336/213/204/226

**MATERIAL**

- A Alcantara ® (on the back side)
- B Jeans
- C Knitted Fabric



**CRYSTAL**

- 01 **NEW 5000** 4 mm Majestic Green (336)
- 02 **127004** Crystal Cupchains P1400C K1H 1088 F 001 (Crystal)
- 03 **127004** Crystal Cupchains P2400C K1H 1088 F 001 (Crystal)
- 04 **127004** Crystal Cupchains P3200C K1H 1088 F 001 (Crystal)
- 05 **NEW 4390** 14x10 mm Crystal F (001)
- 06 **NEW 4390** 10x7 mm Crystal F (001)
- 07 **947359** Crystal Transfers Motif 336/263
- 08 **NEW 40001** Crystal Mesh 003 081 336 (Majestic Green)
- 09 **MTO 40001** Crystal Mesh 003 082 263 (Light Turquoise)
- 10 **40001** Crystal Mesh 003 082 001 (Crystal)

**MATERIAL**

- A Alcantara®
- B Woolen Fabric
- C Wool-Stretch Twill
- D Crimp Bead

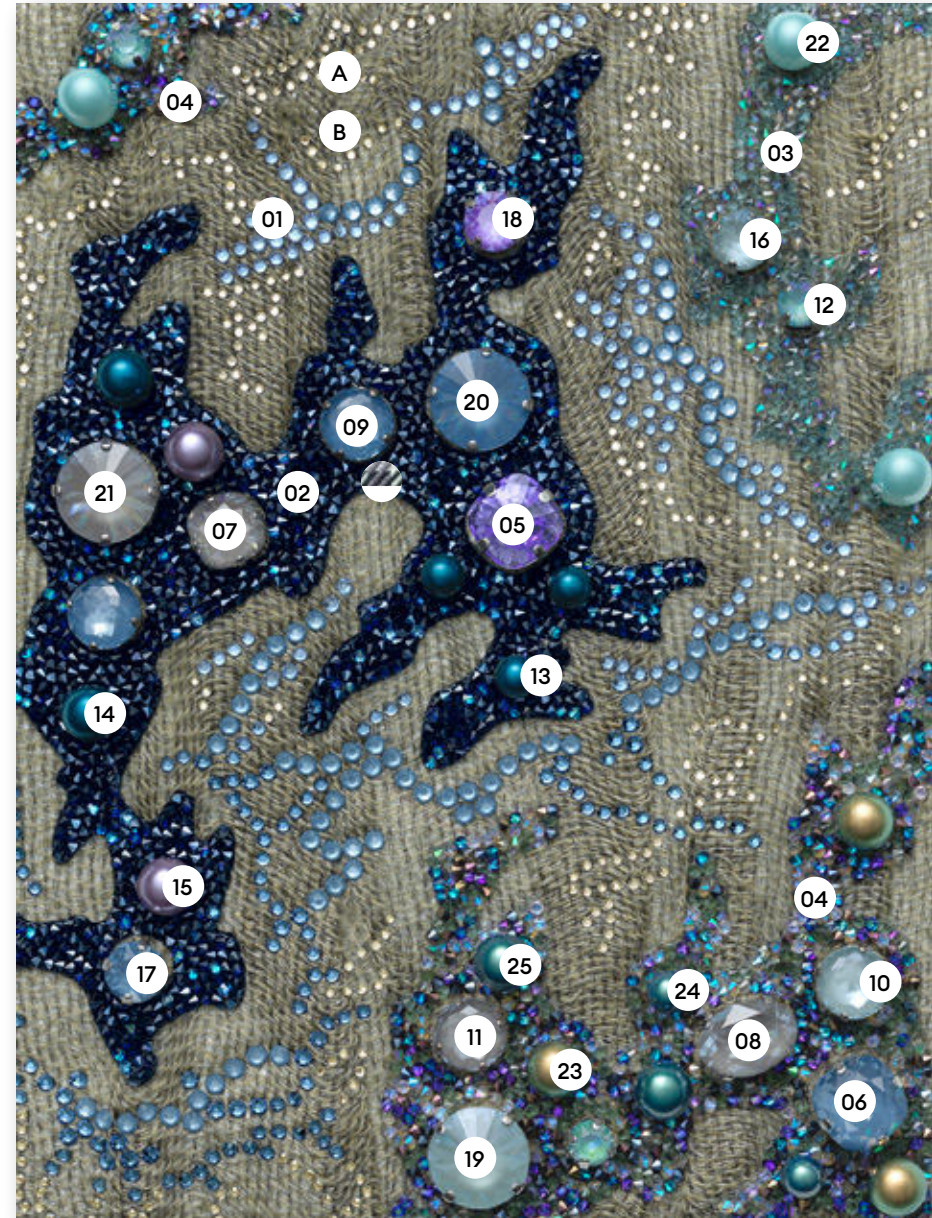


**CRYSTAL**

- 01 947570 Crystal Transfers Motif 001SSHA/266/266/001L1661
- 02 NEW 718454 Crystal Fine Rocks Colorful Mixtures 012 255M156
- 03 NEW 718455 Crystal Fine Rocks Colorful Mixtures 010 202M155
- 04 NEW 718456 Crystal Fine Rocks Colorful Mixtures 010 360M150
- 05 MTO 4471 12 mm Tanzanite F (539)
- 06 NEW 4470 12 mm Crystal Denim Ignite (001 L1661)
- 07 NEW 4470 10 mm Crystal Dark Grey Ignite (001 L1111)
- 08 NEW 4120 14x10 mm Crystal Dark Grey Ignite (001 L1111)
- 09 NEW 1383 10 mm Crystal Denim Ignite (001 L1661)
- 10 NEW 1383 10 mm Crystal Agave Ignite (001 L1651)
- 11 NEW 1383 10 mm Crystal Dark Grey Ignite (001 L1111)
- 12 1088 SS29 Crystal Silky Sage Delite (001 L147D)
- 13 5810 6 mm Crystal Petrol Pearl (001 600)
- 14 5810 8 mm Crystal Petrol Pearl (001 600)
- 15 5810 8 mm Light Amethyst Pearl (001 934)
- 16 NEW 1088 SS39 Crystal Agave Ignite (001 L1651)
- 17 NEW 1088 SS39 Crystal Denim Ignite (001 L1661)
- 18 1088 SS39 Crystal Purple Ignite (001 L1611)
- 19 NEW 1122 14 mm Crystal Agave Ignite (001 L1651)
- 20 NEW 1122 14 mm Crystal Denim Ignite (001 L1661)
- 21 NEW 1122 14 mm Crystal Dark Grey Ignite (001 L1111)
- 22 5810 8 mm Crystal Azore Pearl (001 935)
- 23 5810 8 mm Crystal Iridescent Green Pearl (001 930)
- 24 5810 6 mm Crystal Iridescent Tahitian Look Pearl (001 2004)
- 25 5810 8 mm Crystal Iridescent Tahitian Look Pearl (001 2004)

**MATERIAL**

- A Alcantara ® (on the back side)
- B Woven Cotton



**CRYSTAL**

---

- 01 **947498** Crystal Transfers Motif 336/266/243NIFA/206/  
001L1661/001L1641/001L1651/001L1111/207
- 02 **50311** Crystal Fishnet Bandings 053 012 012 001 (Crystal)

**MATERIAL**

---

- A Alcantara®

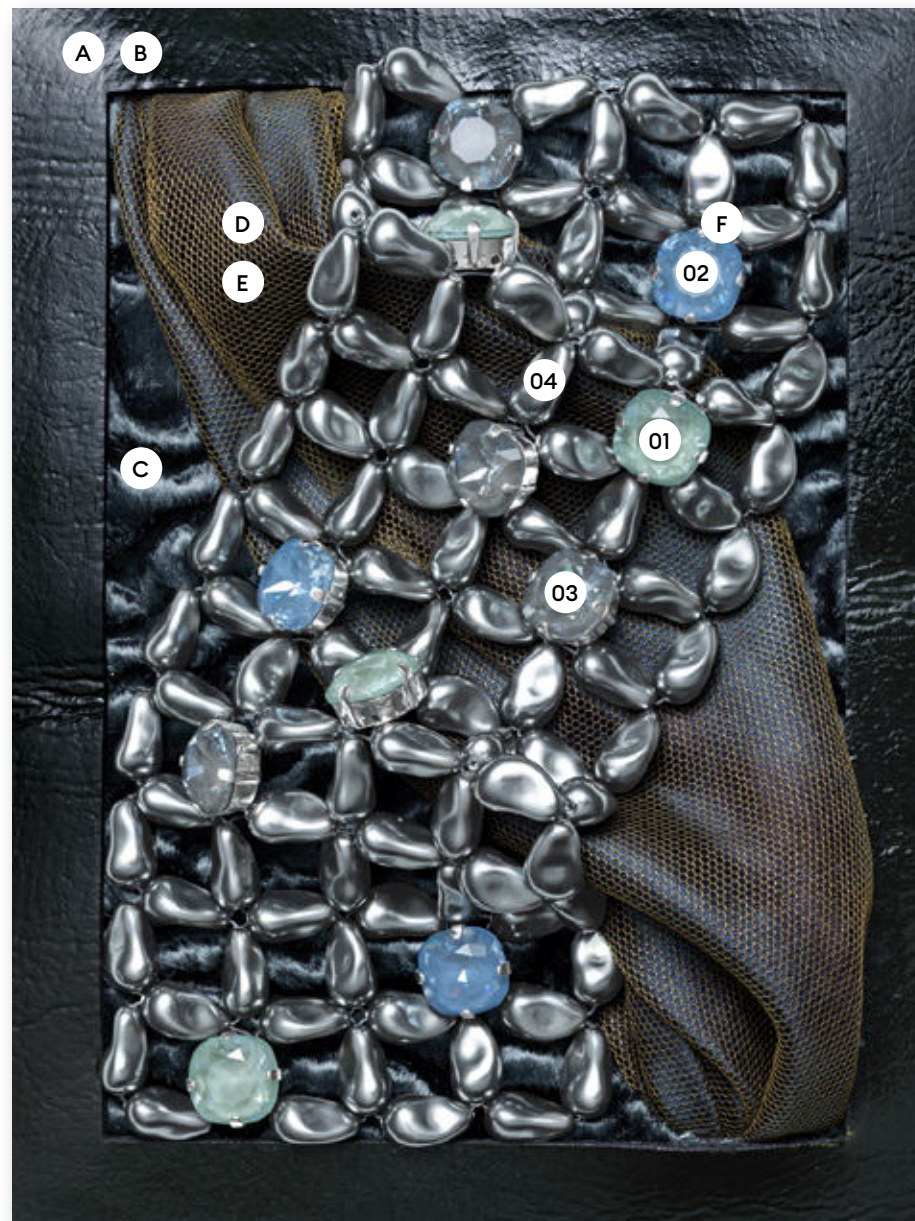


**CRYSTAL**

- 01 **NEW 4470** 12 mm Crystal Agave Ignite (001 L1651)
- 02 **NEW 4470** 12 mm Crystal Denim Ignite (001 L1661)
- 03 **NEW 4470** 12 mm Crystal Dark Grey Ignite (001 L1111)
- 04 **5843** 12 mm Crystal Dark Grey Pearl (001 617)

**MATERIAL**

- A Alcantara ® (on the back side)
- B Patent Leather Imitation
- C Persian Imitation - Fucotex GmbH & Co. KG
- D Tulle
- E Organza
- F Magnets - Webcraft GmbH

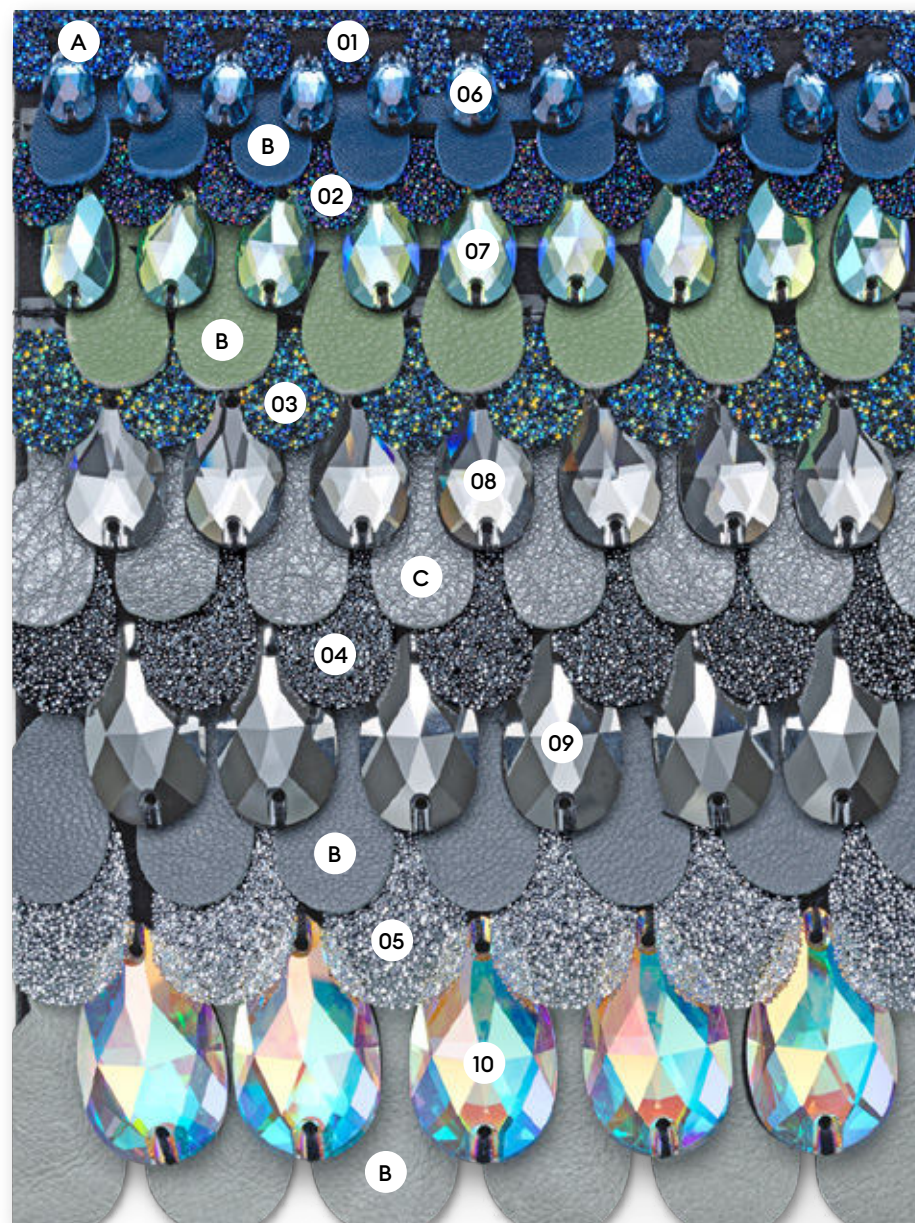


**CRYSTAL**

- 01 **629113** Crystal Fabric Motif 012 001MOL FO
- 02 **629114** Crystal Fabric Motif 012 001PARSH FO
- 03 **629110** Crystal Fabric Motif 012 001AB FO
- 04 **629111** Crystal Fabric Motif 012 001CHRM FO
- 05 **629112** Crystal Fabric Motif 010 001CAL FO
- 06 **MTO 3230** 12x7 mm Denim Blue F (266)
- 07 **MTO 3230** 18x10.5 mm Erinite Shimmer F (360 SHIM)
- 08 **NEW 3230** 23x13.8 mm Crystal Silver Night F (001 SINI)
- 09 **MTO 3230** 28x17 mm Crystal Light Chrome F (001 LTCH)
- 10 **NEW 3230** 34x20.4 mm Crystal AB F (001 AB)

**MATERIAL**

- A Alcantara ® (on the back side)
- B Leather - Fauck GmbH
- C Leather - Jacobs GmbH





**CRYSTAL**

- 01 **NEW 718421** Crystal Fine Rocks Colorful Mixtures  
FO 010 319M158
- 02 **NEW 718419** Crystal Fine Rocks Colorful Mixtures  
FO 010 319M148
- 03 **NEW 718420** Crystal Fine Rocks Colorful Mixtures  
FO 010 202M155
- 04 **NEW 718420** Crystal Fine Rocks Colorful Mixtures  
FO 010 360M150
- 05 **NEW 6438** 9 mm Crystal Golden Shadow (001 GSHA)
- 06 **NEW 6438** 16 mm Crystal Golden Shadow (001 GSHA)
- 07 **127004** Crystal Cupchains P3200C CIZ 1088 F 203 (Topaz)

**MATERIAL**

- A Alcantara® (on the back side)
- B Faux Fur
- C Leather
- D Fake Fur Cord - Shindo Textile Europe GmbH
- E Multi Color Lamè Fringe - Shindo Textile Europe GmbH
- F Woolen Fabric
- G Knitted Fabric



**CRYSTAL**

- 01 **NEW 718444** Crystal Fine Rocks Colorful Mixtures  
010 319M158
- 02 **NEW 718443** Crystal Fine Rocks Colorful Mixtures  
I010 319M158
- 03 **NEW 718445** Crystal Fine Rocks Colorful Mixture  
010 319M148 XS
- 04 **4320** 14x10 mm Crystal Serene Gray DeLite (001 L150D)
- 05 **NEW 4120** 14x10 mm Crystal Dark Grey Ignite (001 L1111)
- 06 **NEW 4470** 10 mm Crystal Electric White Ignite (001 L139I)
- 07 **MTO 4480** 8 mm Crystal Light Grey Delite (001 L129D)
- 08 **5810** 8 mm Crystal Grey Pearl (001 731)
- 09 **5601** 6 mm Topaz (203)
- 10 **5601** 8 mm Light Topaz (226)
- 11 **MTO 5601** 6 mm Golden Topaz (1003)
- 12 **NEW 6438** 9 mm Crystal Golden Shadow (001 GSHA)
- 13 **NEW 6438** 11.5 mm Crystal Golden Shadow (001 GSHA)
- 14 **5821** 11x8 mm Crystal Creamrose Light Pearl (001 618)

**MATERIAL**

- A Alcantara ® (on the back side)
- B Net
- C Crimp Bead
- D Headpin

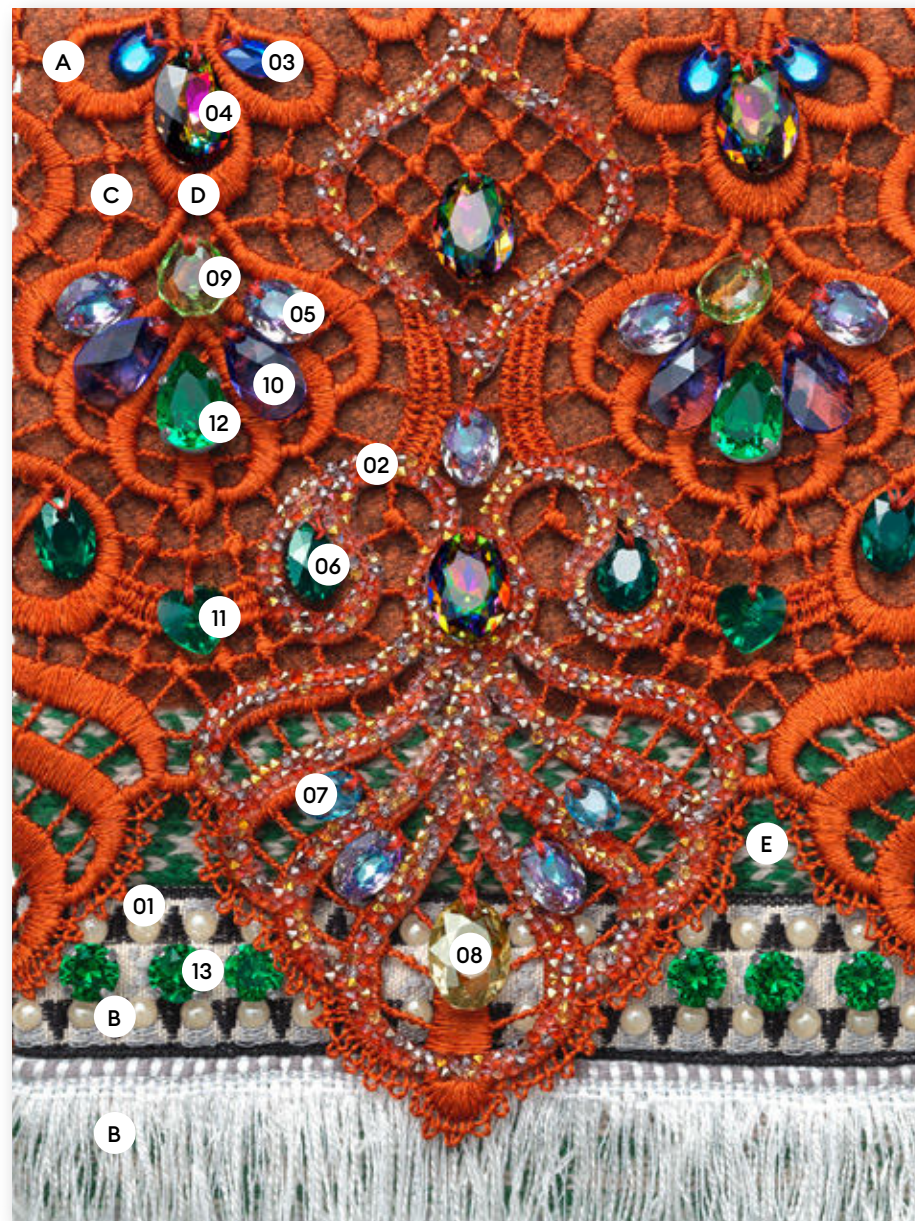


**CRYSTAL**

- 01 947571 Crystal Transfers Motif 001GSHA
- 02 NEW 718395 Crystal Fine Rocks Colorful Mixtures 010 319M158
- 03 NEW 6438 9 mm Crystal Bermuda Blue P (001 BB)
- 04 NEW 6438 16 mm Crystal Vitrail Medium P (001 VM)
- 05 NEW 6438 11.5 mm Crystal Vitrail Light P (001 VL)
- 06 NEW 6438 11.5 mm Emerald (205)
- 07 NEW 6438 9 mm Aquamarine (202)
- 08 NEW 6438 16 mm Crystal Golden Shadow (001 GSHA)
- 09 6436 11.5 mm Peridot (214)
- 10 6106 16 mm Tanzanite (539)
- 11 NEW 6228 10.3x10 mm Majestic Green (336)
- 12 NEW 4320 14x10 mm Majestic Green F (336)
- 13 NEW 1088 SS39 Majestic Green F (336)

**MATERIAL**

- A Alcantara ® (on the back side)
- B Ribbon - Vostex P.C.
- C Loden - Fucotex GmbH & Co. KG
- D Lace
- E Knitted Fabric



**CRYSTAL**

- 01 **947461** Crystal Transfers Motif 1003/001/539/214/203
- 02 **947581** Crystal Transfers Motif 539/214/001L111/001L1391/203
- 03 **NEW 718427** Crystal Fine Rocks Colorful Mixtures 012 319M158
- 04 **NEW 718428** Crystal Fine Rocks Colorful Mixtures 010 319M158
- 05 **NEW 718427** Crystal Fine Rocks Colorful Mixtures 012 202M155
- 06 **NEW 718428** Crystal Fine Rocks Colorful Mixtures 010 202M155
- 07 **NEW 718427** Crystal Fine Rocks Colorful Mixtures 012 319M148
- 08 **NEW 718428** Crystal Fine Rocks Colorful Mixtures 010 319M148

**MATERIAL**

- A Alcantara®
- B Natural Twist Cord - Shindo Textile Europe GmbH
- C Tulle
- D Ribbon
- E Metal Components
- F Woolen Fabric



**CRYSTAL**

- 01 **NEW 4320** 14x10 mm Crystal Dark Grey Ignite (001 L1111)
- 02 **4320** 14x10 mm Crystal Serene Gray DeLite (001 L150D)
- 03 **NEW 4320** 14x10 mm Crystal Agave Ignite (001 L1651)
- 04 **4320** 14x10 mm Crystal Silky Sage DeLite (001 L147D)
- 05 **NEW 4320** 14x10 mm Crystal Denim Ignite (001 L1661)
- 06 **4320** 14x10 mm Denim Blue F (266)
- 07 **4320** 14x10 mm Crystal Ocean Delite (001 L143D)
- 08 **MTO 4228** 10x5 mm Crystal Electric White Ignite (001 L139I)
- 09 **MTO 4228** 10x5 mm Crystal Electric Blue Ignite (001 L134I)
- 10 **4228** 15x7 mm Crystal F (001)
- 11 **4228** 15x7 mm Aquamarine F (202)
- 12 **MTO 4228** 15x7 mm Crystal Ignite (001 IGNIT)
- 13 **MTO 4228** 10x5 mm Aquamarine Ignite (202 IGNIT)
- 14 **NEW 1088** SS39 Crystal Electric White Ignite (001 L139I)
- 15 **MTO 1088** SS39 Erinite F (360)
- 16 **5810** 8 mm Crystal Light Green Pearl (001 293)
- 17 **5810** 8 mm Crystal Powder Green Pearl (001 393)
- 18 **5810** 8 mm Crystal Dark Green Pearl (001 814)

**MATERIAL**

- A Alcantara ®
- B 3D Print On Textile - DYLOAN Bond Factory srl
- C Satin
- D Leather



**CRYSTAL**

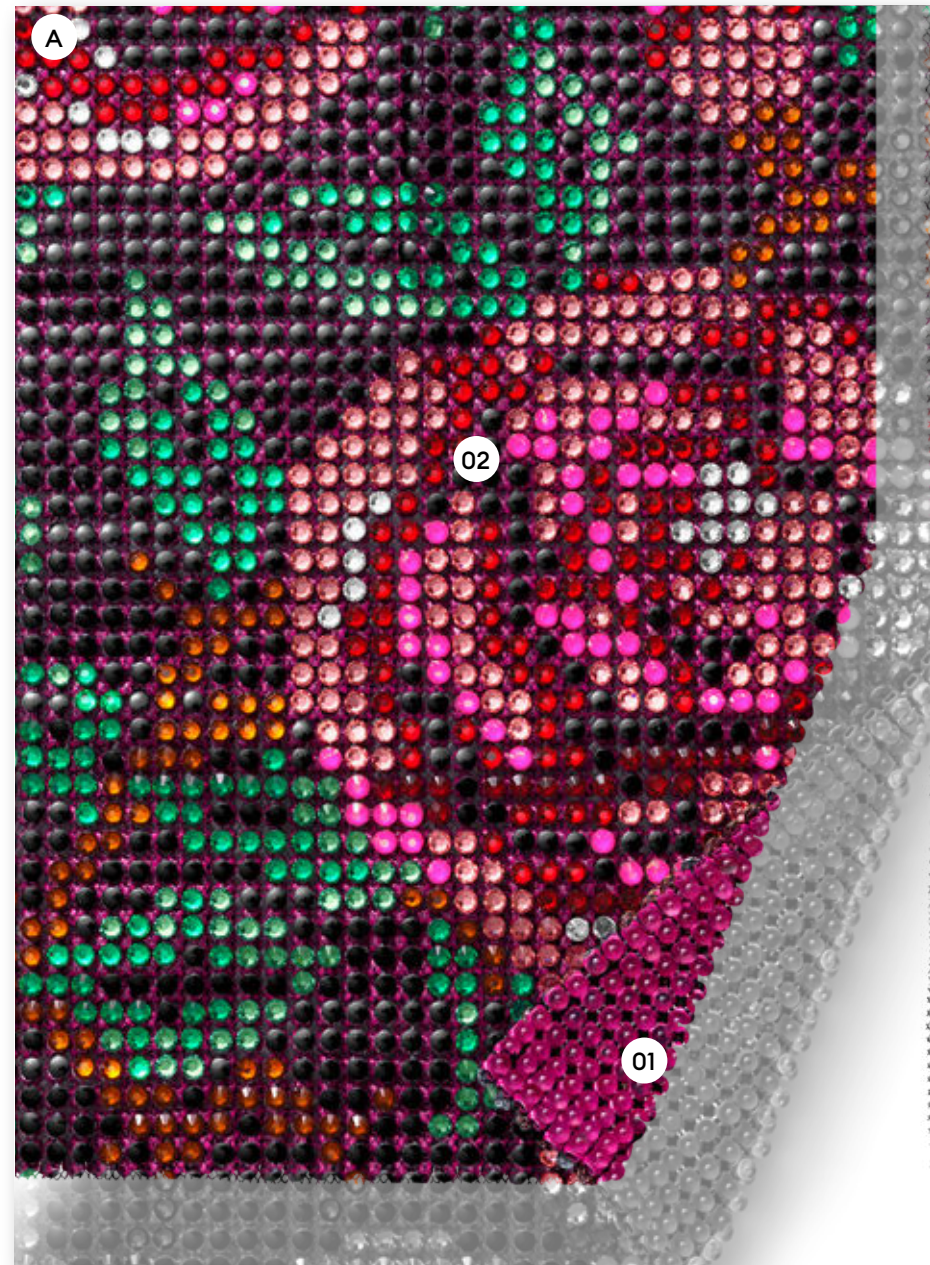
---

- 01 **NEW 40500** Crystal Caviar Mesh 100 R4010 001 NOHF
- 02 **947499** Crystal Transfers Motif R9005/327/336/262/257/  
1001/360/001L1371/261

**MATERIAL**

---

- A Tulle

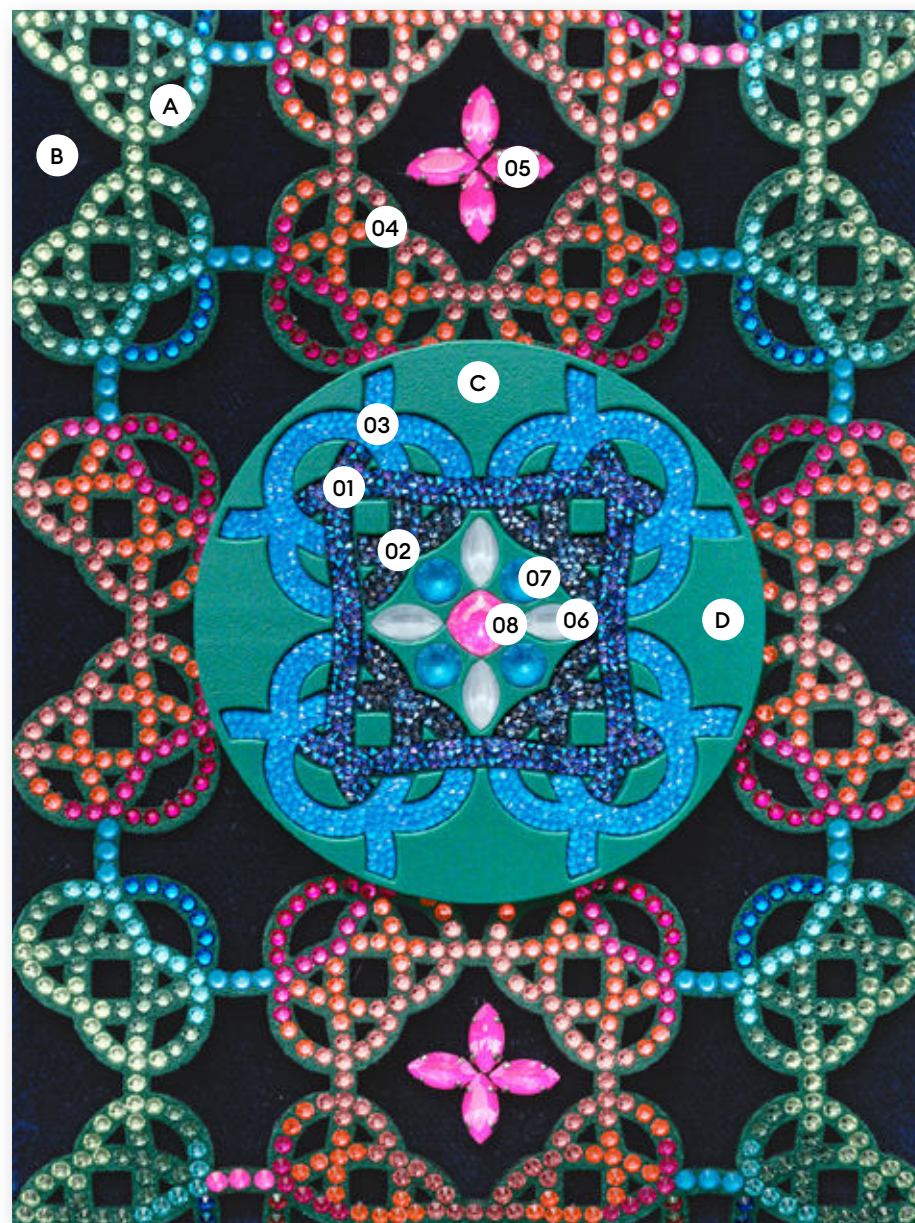


**CRYSTAL**

- 01 **831647** Crystal Ultrafine Rocks Motif I012 001SHIM
- 02 **831648** Crystal Ultrafine Rocks Motif I012 001MOL XS
- 03 **831646** Crystal Ultrafine Rocks Motif I-0097D6 001M126
- 04 **947572** Crystal Transfers Motif 542/360/262/238/202/502/243/501/001L1371/001L134I
- 05 **MTO 4228** 10x5 mm Crystal Electric Pink Ignite (001 L1371)
- 06 **MTO 4228** 10x5 mm Crystal Electric White Ignite (001 L139I)
- 07 **NEW 1088** SS29 Crystal Electric Blue Ignite (001 L134I)
- 08 **NEW 4460** 8 mm Crystal Electric Pink Ignite (001 L1371)

**MATERIAL**

- A Alcantara ®
- B Velvet - Fucotex GmbH & Co. KG
- C 3D Print
- D Velcro (on the back side)



**CRYSTAL**

- 01 **NEW 40500** Crystal Caviar Mesh 100 R4010 001
- 02 **NEW 40500** Crystal Caviar Mesh 100 R1704035 001
- 03 **NEW 40500** Crystal Caviar Mesh 100 081 001 NOHF
- 04 **NEW 4320** 14x10 mm Crystal Electric White Ignite (001 L1391)
- 05 **NEW 4320** 14x10 mm Crystal Electric Pink Ignite (001 L1371)
- 06 **4228** 8x4 mm Crystal F (001)
- 07 **MTO 4228** 8x4 mm Light Rose Ignite (223 IGNIT)
- 08 **4228** 8x4 mm Light Rose F (223)
- 09 **4228** 8x4 mm Rose F (209)
- 10 **MTO 4228** 8x4 mm Fuchsia F (502)
- 11 **MTO 4228** 10x5 mm Crystal Electric White Ignite (001 L1391)
- 12 **4200** 11x3 mm Crystal F (001)
- 13 **3700** 8 mm Crystal (001)
- 14 **3700** 6 mm Crystal F (001)

**MATERIAL**

- A Alcantara ®
- B Velvet
- C Woolen Fabric
- D End Clasps
- E Crepe Satin - Fucotex GmbH & Co. KG
- F Leather
- G Metal Part
- H Ring
- I 3D Print





## General Warning

Loose crystals may present a small parts hazard to young children, particularly children under three years old. Depending on the size of the crystal and any attached material (such as glue, fabric, etc.), children may choke on, inhale, swallow, or insert the crystal into their noses. Magnetic products with crystal applications pose a particular risk of serious intestinal injury if ingested. The application techniques as stated in the Application Manual do not guarantee that crystals will not come loose or chip. For each application, the manufacturer must determine whether the product meets the relevant requirements related to small parts hazards and assess any risk it may pose, in particular to small children. Failure to follow Swarovski's care instructions may result in damage to the crystal, which could pose a risk of laceration or other harm.

### Warning for Tableware

Application of loose crystals to tableware presents a potential risk of aspiration, choking, swallowing, or tooth damage should crystals become loose. To reduce this risk, crystals should never be applied to any tableware surface likely to come in contact with food or the mouth, and crystals should never be placed on any tableware intended for use by children. Tableware with crystals intended for decorative use only should be marked as such. To avoid dishwasher damage, tableware decorated with crystals should be washed by hand. The application techniques or suggestions in this manual do not guarantee that crystals will not come loose. For each application, the manufacturer must determine whether the product meets relevant requirements related to small parts hazards or use in food contact items and assess any risk it may pose to users. The use of crystals (which may contain restricted substances deemed hazardous under local laws) and adhesives on tableware is subject to legal restrictions in specific countries. The customer is fully responsible for complying with these country-specific provisions and shall defend, indemnify, and hold Swarovski harmless from any and all third-party claims based on product liability or otherwise relating to uses of Swarovski products and waives all its own claims against Swarovski.

### Notice for Application on Packaging

The use of crystal that may contain substances like lead, cadmium or hexavalent chromium, on packaging is subject to legal restrictions in specific countries including but not limited in regard to the total content of substances based on the proportion between crystal mass to the remaining weight of packaging. The customer is fully responsible for complying with these country-specific provisions and to pass on this information to his customers.

### Care Instructions

Failure to follow Swarovski's care instruction may result in damage to the Swarovski product, which could pose a risk of laceration or other harm. Please be informed that all conventional laundering processes (household washing machine as well as professional dry-cleaning) have a considerable mechanical influence onto the garment, which is based on the rotation of the washing drum. The essential requirement for a safety laundering process is that the Swarovski products are proper applied without restrictions regarding the adherence of the Swarovski products. The bigger the size of the used Swarovski product is and the more Swarovski products are applied next to each other, the more a risk of damage has to be taken into consideration. Swarovski products are made of or incorporate crystal and therefore must be handled with due care! Generally, to best protect the Swarovski products from breaking we recommend the use of a soft washing bag and to fill up the washing drum. Turning inside out before washing and selection of a gentle washing program, plus the use of mild detergents are important prerequisites to safeguard the quality of our Swarovski products. Our care instructions based on DIN EN ISO 3758 list up all Swarovski product groups as overview so that each used Swarovski product still needs to be judged in terms of its cleaning suitability for the intended purpose and finished product by the customer. Swarovski's recommendations are given according to the current state of our knowledge and Swarovski's determination of the qualification as textile application product. The customer is therefore fully responsible to determine the cleaning process applicable to the finished product, taking the Swarovski care instructions as well as those of third party materials into account. The variety of shape, cut, surface effect, size and application weight respectively amount of used Swarovski products are decisive for the determination of the suitable cleaning process. To be entirely safe customers respectively dry-cleaners usually take off Sew-on Stones, Buttons, etc. of bigger size before cleaning and re-apply them afterwards.

### Unsuitable Applications

Crystals from Swarovski are intended for use in the fields of fashion, jewelry, accessories, textile products, and for interior décor. Due to their physical properties, crystals from Swarovski are unsuitable for other uses (e.g. gluing onto teeth, using crystals on or near mucous membranes, and other unsafe uses). The customer shall defend, indemnify and hold Swarovski harmless from any and all third-party claims based on product liability or otherwise relating to uses of Swarovski products purchased by the customer, and waives all its own claims.

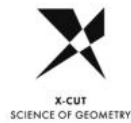
### Responsibility of User

Any oral, written, or test-based advice that Swarovski provides regarding techniques for application of its products are recommendations based on Swarovski's current knowledge and the information provided by its suppliers. Such advice does not discharge the customer from carrying out its own tests of techniques it proposes to use and their suitability for the intended application. The application, use, and processing of these techniques and products are solely the user's responsibility.

### Change of Product

Swarovski reserves the right to modify the dimensions, shape, composition and concentration of components belonging to products that are referred to in this Product Information brochure. Furthermore, any applicable laws and regulations mentioned are subject to change, which is why Swarovski regularly publishes an updated version of the Product Information brochure containing facts, (application) instructions, and the current legal situation that is valid at the time of publication. References to compliance with such regulations as are stated above are based on their requirements as of the current date. Anyone seeking an in-depth understanding of the provisions should read the various laws in their entirety and/or seek advice from a legal counsel. The customer must request and observe the valid version of the Product Information brochure before (re)ordering and using the products.

EXCELLENCE, THROUGH INNOVATION AND ORIGIN



**X-Cut**  
Advanced optical measurement and high-precision manufacturing deliver premium cuts characterized by unmatched brilliance.



**Hotfix Glue**  
The variable temperatures at which Hotfix glue can be activated enable the application of crystals on a broad range of textiles.



**Platinum\* Pro**  
With its new advanced foiling technique, Swarovski has set a new standard in the lifespan of crystals.



**Crystals – Made in Austria**  
The combination of innovation with sustainability and respect for individual wellbeing means that quality is always assured.

PREMIUM, BY SERVICE AND DESIGN



**Design Service**  
Throughout its global network of Design Centers, Swarovski offers exceptional service provided by the industry’s best creative talent.



**Global Service**  
Swarovski’s Global Service Network provides customers with dedicated personal assistance on a local level.



**Application Service**  
A comprehensive range of application services means customers benefit from the extensive experience of leading international experts, as well as internal specialists.



**Customized Service**  
Choose new variations by going beyond Swarovski’s tremendous standard assortment of crystal components and forward integrated elements.

COMPLIANCE, WITH INTEGRITY



**Advanced Crystal**  
Swarovski’s patented lead-free\*\* formula has changed the DNA of crystal while still offering the same sparkle, dependability, and variety for which Swarovski is famous.



**Clear**  
Regular legal monitoring of chemical requirements and reasonable testing provide customers with the comfort of trust in Swarovski’s products.



**OEKO-TEX**  
Oeko-Tex® Standard 100 Class II (direct contact with skin) certification creates confidence in chemical safety of textile applications.



**Compliance Service**  
Assessments regarding substance limitations as well as compliance information and advice to support customers in complying with relevant laws, regulations, and voluntary standards.

\* Silver mirror coated with a platinum-colored protective layer. \*\* Crystal glass and all other materials containing 0.004% lead or less.

Valid from September 2023

Content is subject to change without notice. Errors and misprints excepted.

Please note, the actual products may deviate from the pictures in color and effect.

D. Swarovski Distribution GmbH, Swarovskistrasse 30, 6112 Wattens, Austria

© 2023 D. Swarovski Distribution GmbH. All rights reserved. Partial or total

publication, transmission, copy or other duplication of texts, graphics, pictures etc.

that are to be found in this publication is forbidden without special consent by

D. Swarovski Distribution GmbH.

Swarovski® is a registered trademark of Swarovski AG.

Please visit our website for contact information: [swarovski.com/s-professionals](https://www.swarovski.com/s-professionals)