

The image is a cover for the Swarovski Architecture Collection. It features a white background with a pattern of grey, faceted geometric shapes. The shapes are most densely packed at the bottom, creating a textured, crystalline effect, and become sparser as they move towards the top. The shapes are various polygons, some resembling diamonds or crystals, with different shades of grey and white to create a three-dimensional effect. The text 'SWAROVSKI' is centered in a large, black, serif font, and 'ARCHITECTURE COLLECTION' is centered below it in a smaller, black, sans-serif font.

SWAROVSKI

ARCHITECTURE COLLECTION

ARCHITECTURE COLLECTION

06	INVENTORS OF LIGHT
14	TURNING SPACES INTO WONDER
16	Crystal Surfaces
58	Bespoke Lighting
70	PROJECT REFERENCES



#### MASTERS OF LIGHT AND SPARKLE

Driven by a pioneering spirit that dates back to the very first days of our company and to its founder Daniel Swarovski, it has always been our aim to find new ways to infuse crystal into daily life. Inspired by ideas from bright minds, guided by collaborations with creative innovators and based on the solid expertise that comes from our experience of more than 120 years, we keep pushing the boundaries of what is possible, realizing what before seemed impossible and introducing products that make life beautiful – everywhere you look.

Enjoy what makes the everyday extraordinary!

Markus Langes-Swarovski  
Member of the Executive Board



## INVENTORS OF LIGHT

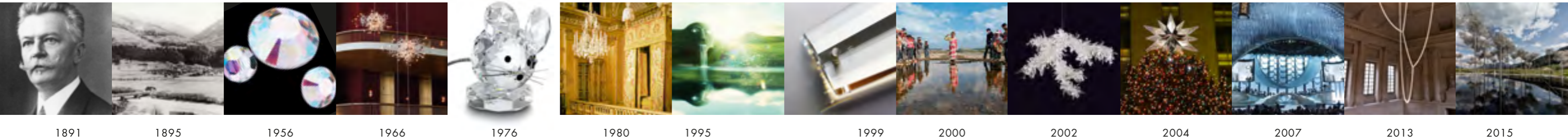
Founded by Daniel Swarovski in 1895, the still family-owned company has proven itself to be a master of light and precision. For over five decades, it has enriched the world of lighting and interior with its ongoing innovative spirit, sensational international collaborations and stunning new products.

Swarovski has brought light to runways, catwalks, collections and creatives. The most brilliant minds of our times and times past have relied on our crystal, when they wanted things to stand out. The company has influenced and inspired, cooperated – and made a change.

Whenever we looked for something new, we invented it. Our own interiors, stores, retail concepts and showrooms reflect our very pioneering spirit and show that we are top of our class.

Being rated among the top luxury fashion labels, Swarovski's superior strength as a brand transforms and elevates, making us the "first choice" the world over.

# SWAROVSKI – A HISTORY



1891

## A NEW ERA OF CRYSTAL BEGINS

With his patented invention of a machine that could “cut crystal to perfection”, Daniel Swarovski not only makes crystal accessible for everybody, but sets out to revolutionize crystal cutting itself. It is the beginning of a new era.

1895

## WATTENS BECOMES THE HOME OF CRYSTAL

Guided by his vision to “improve on what is good” Daniel Swarovski and his business partners found the company in Wattens, Tyrol, Austria.

1956

## AURORA BOREALIS DAZZLES THE CATWALK

Working hand in hand with couture greats, Swarovski develops the Aurora Borealis effect, an iridescent crystal finish. And sure enough, a little time later none other than Christian Dior stages Aurora Borealis on his catwalk.

1966

## LET THERE BE LIGHT!

For the first time ever, Swarovski starts producing crystal components for chandeliers and lighting sources, laying the foundation to what would later become a business unit represented in the grandest houses of the world. Among the first projects is New York’s Metropolitan Opera.

1976

## A MOUSE THAT ENCHANTED THE WORLD

Chandelier components, playfully glued together to form a mouse, mark the beginning of an unmatched success story – it is the first figurine ever, to be followed by many more, gathering thousands of fans worldwide.

1980

## SWAROVSKI AND THE SUN KING

The established reputation for crystal cutting perfection makes Swarovski the one and only expert suitable for the task of refurbishing the magnificent chandeliers within the Palace of Versailles, restoring the halls of the Sun King back to their baroque splendor.

1995

## ONCE UPON A TIME THERE WAS A GIANT

Celebrating its 100th anniversary, Swarovski decides to dedicate a very special place to the countless crystal enthusiasts – a place where the magic of crystal would be alive. Today, the Swarovski Crystal Worlds have become one of the top must-sees of Austria.

1999

## MARKING THE BEST OF THE BEST

For true crystal fans there is only one brand. In order to give them the peace of mind of having made the right choice, Swarovski introduces its one-of-a-kind, laser-engraved Quality Seal into its lighting components.

2000

## THE SWAROVSKI WATERSCHOOL

The first Swarovski Waterschool opens in the Austrian Hohe Tauern National Park – in the presence of the Austrian Federal President and accompanied by greetings from the then UN Secretary-General, Kofi Annan.

2002

## LIGHTING MADE BY SWAROVSKI

From a messenger of light to a source of light: “Swarovski Crystal Home” and the “Swarovski Crystal Palace” design initiative hit the market with lighting objects that are genuinely Swarovski, created in collaboration with some of the most brilliant minds in contemporary design.

2004

## WISH UPON A STAR

Crowning one of the most distinctive holiday symbols in America, Swarovski dedicates a three-meter star for the Christmas tree at New York’s Rockefeller Center – the beginning of a beloved, annual tradition.

2007

## AND THE OSCAR GOES TO...

For the first time, Swarovski brings sparkle to the most prestigious movie event in the world: The crystalline curtain at the Oscars made a spectacular visual impact and became an Oscar’s tradition in the years that followed.

2013

## BACK TO VERSAILLES – FOR GOOD

Maintaining the close connection between Swarovski and culture, the Bouroullec brothers adorn the Palace of Versailles with its first ever permanent modern work of art in the form of the “Gabriel” chandelier.

2015

## SWAROVSKI CELEBRATES 120 YEARS

To mark the occasion, Swarovski Crystal Worlds was given its biggest revamp since it opened in 1995, and the brand presented its history in a spectacular illustrated volume, published in New York by Rizzoli.

# SUSTAINABLE PHILOSOPHY

Swarovski produces its world famous crystals at its headquarters in Wattens, building upon quality assurance, shared responsibility for employee and social wellbeing and environmental sustainability, offering 100% lead-free products made with transparent, traceable operations.



# TECHNICAL SUPERIORITY

With our expertise in crystal that has built up over more than a century Swarovski applies highly advanced manufacturing techniques that bring out the best in light, resulting in clarity, breathtaking reflection and shiny, perfectly even surfaces.

# UNIQUE SELECTION

As a result of constantly exploring new crystal applications, Swarovski offers a product range of crystal interior solutions that is unrivalled on the market in terms of quality, diversity and creativity.





Many designs, like the chandelier “Gabriel” shown in these images, are truly unique and as such not for sale. Instead of selling genius, we help you realize your own.

## TAILOR-MADE SOLUTIONS

For every idea there is a solution, and Swarovski knows how to find it: A dedicated team of industry experts offers 360° support to clients – from product design to manufacturing and installation assistance.

**CRYSTAL EXPERTISE FOR A 360° PROCESS OPTIMIZATION**  
We understand the power of crystal and light: Our team is composed of experts across various architectural fields, developing new and unprecedented application techniques and offering comprehensive support throughout the entire duration of a project: from planning and purchasing to project management and creation, ensuring flawless implementation in the end.

**DESIGN CAPABILITIES: WE BRING YOUR CONCEPT TO LIFE**  
From crystal stairs to wall partitions that dance with light, our project management team aims at helping our customers realize their own vision with crystal. They work with unique architectural elements tailored to their surroundings, be it by means of skillful modification of existing products or by inventing something entirely new, understanding and drawing on the expressive, emotional and transformative power of crystal.



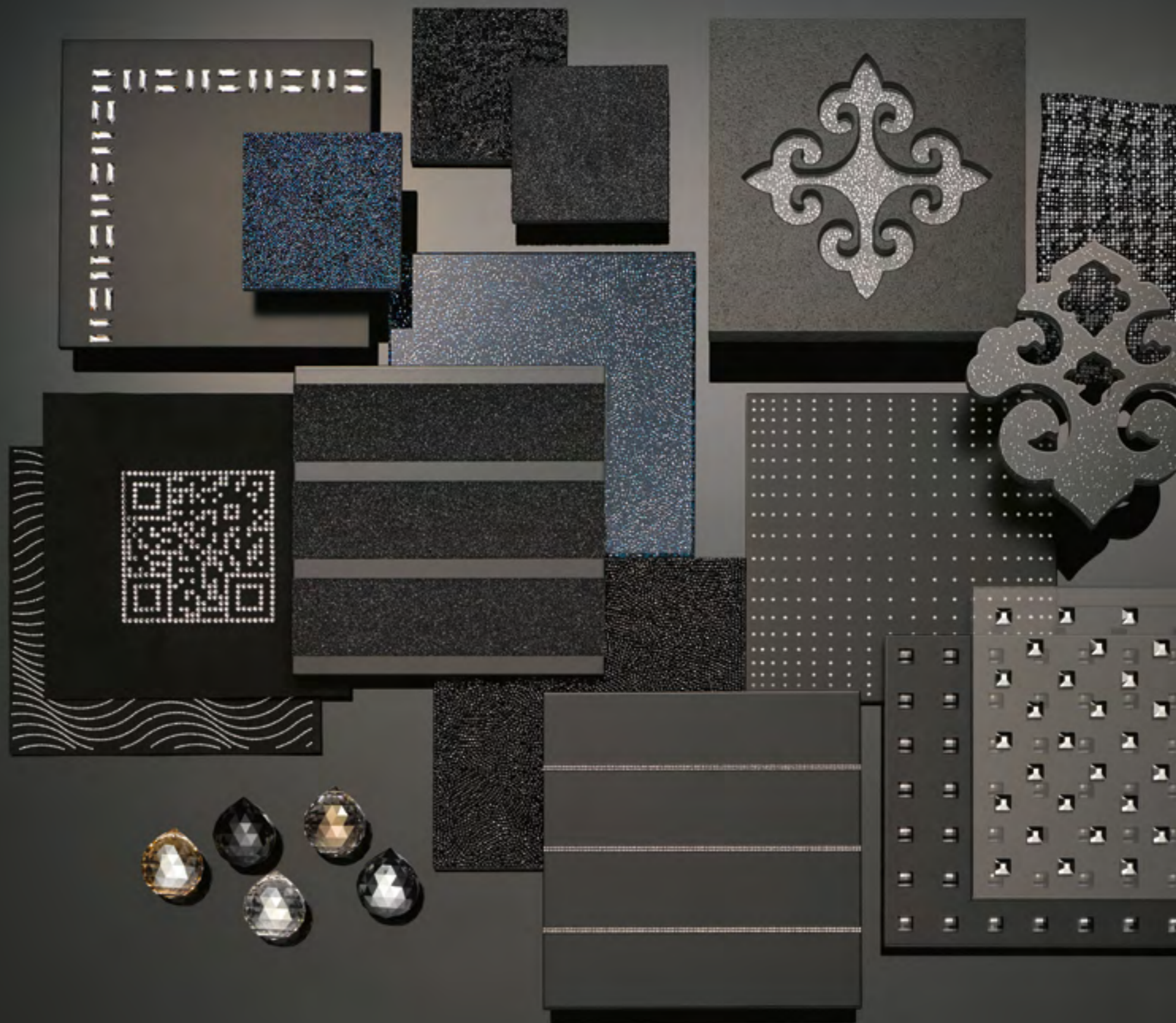
## TURNING SPACES INTO WONDER

Unlike any other material, crystal has the power to bathe a room in dazzling starlight. Already a favorite with leading architects and interior designers, Swarovski's lighting and interior solutions have become integral parts of luxurious building projects, not only offering a stunning range of elements to choose from, but also providing an endless source of creativity to design bespoke solutions.



# CRYSTAL SURFACES

Swarovski presents its latest crystalline sensation: The cutting-edge Crystal Surfaces with unprecedented sparkling effects. This stunning collection of surface treatments is set to push the boundaries of crystal application within the field of high-end outfitting. It offers one-of-a-kind crystal interior solutions in terms of quality, diversity and creativity.



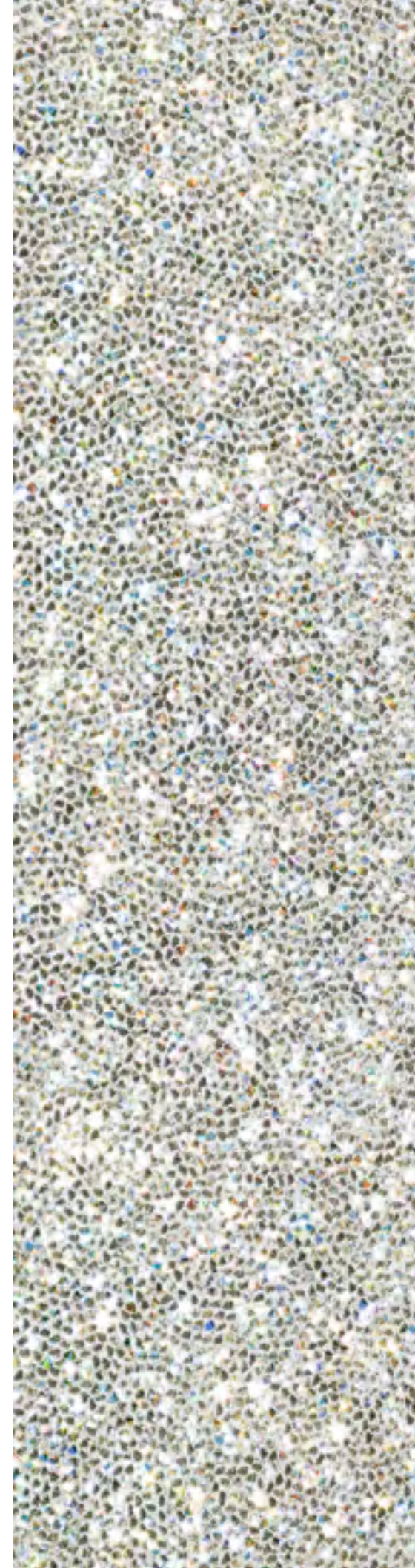
- 18 ACTIVE PANEL
- 24 CRYSTAL ROCKS
- 30 CRYSTAL COMPOUND
- 36 CRYSTAL GRID
- 48 CLASSIC PANEL
- 52 HEXAGON PANEL



## ACTIVE PANEL

Tactile, sparkling and high-polished, the Active Panel combines the luminous power of 200,000 crystals per square meter with a backlighting of special LEDs. Active Panel comes in a variety of color and shape options.

Crystals are glued on a glass per square meter. The lighting is created with a specially designed LED solution, which creates the perfect sparkle of the crystals. The LED boards are modular, enabling the realization of a variety of shapes and sizes.



### CRYSTAL COLOR

Crystal Aurore Boreale (001 AB)  
Crystal Golden Shadow (001 GSHA)  
Crystal Silver Shade (001 SSHA)

*See page 46 - 47*

### CRYSTAL SIZE

PP 14 / 2,00 - 2,10 mm  
PP 22 / 2,80 - 2,90 mm

### SIZE

Max. 1500x2500 mm  
Min. 10x10 cm

### WEIGHT

1x1 m, approx. 55 kg

### SPECIAL POSSIBILITIES

Printable on crystal surface  
Integration to Smart home system

### APPLICATION

Ambient lighting  
Interior decor-art  
Signage  
Ceiling panel  
Company logos

*See page 86 for additional information*

ACTIVE PANEL

DANIELS KRISTALLWELTEN.  
CAFÉ & RESTAURANT,  
SWAROVSKI KRISTALLWELTEN,  
Wattens, Austria

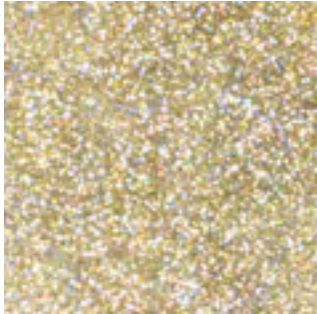


reddot award 2015  
winner

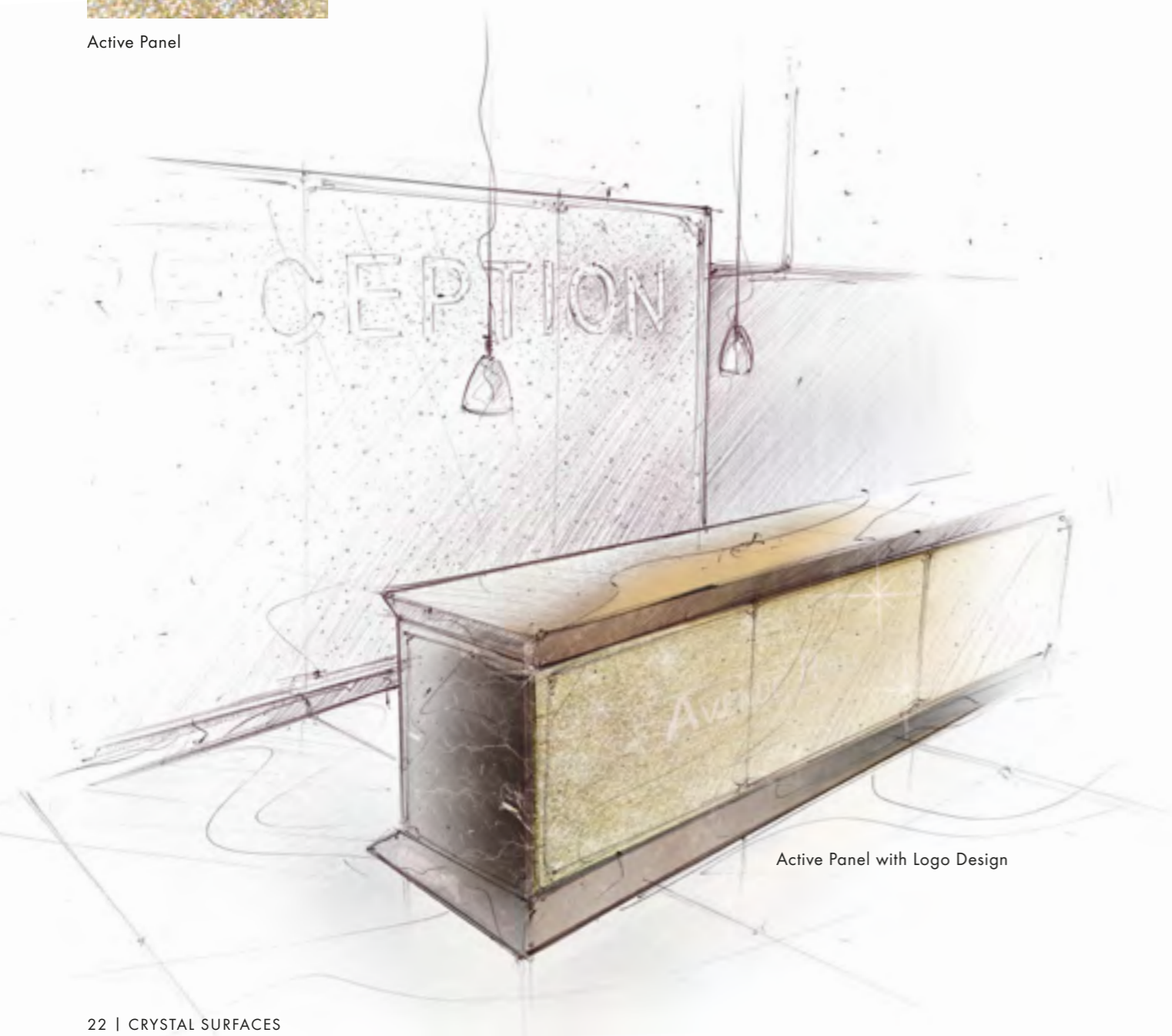


ACTIVE PANEL

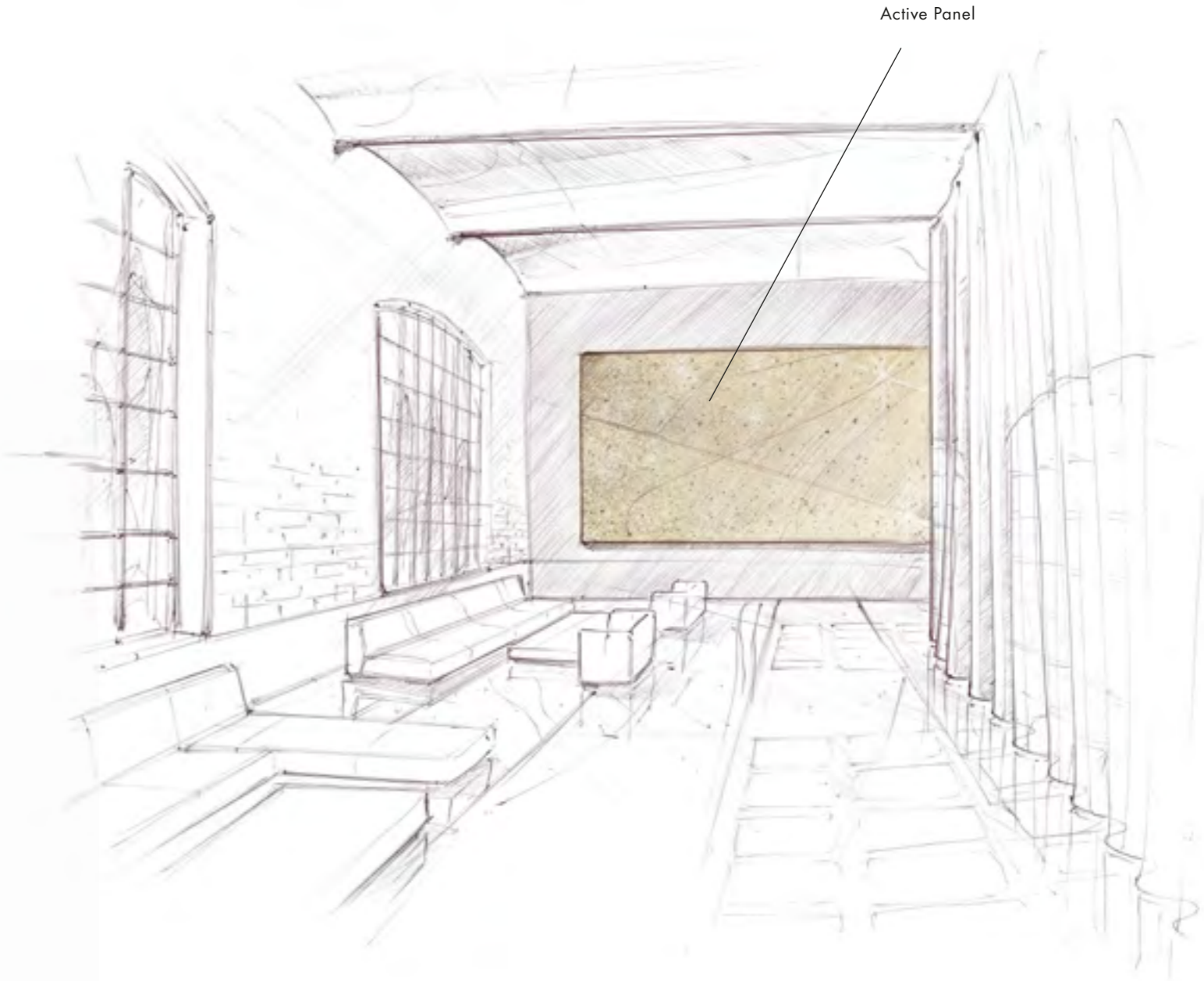
There is no second chance for a first impression. Crystal is a strong statement for lobby spaces, impressing visitors from the first entrance to the last farewell.



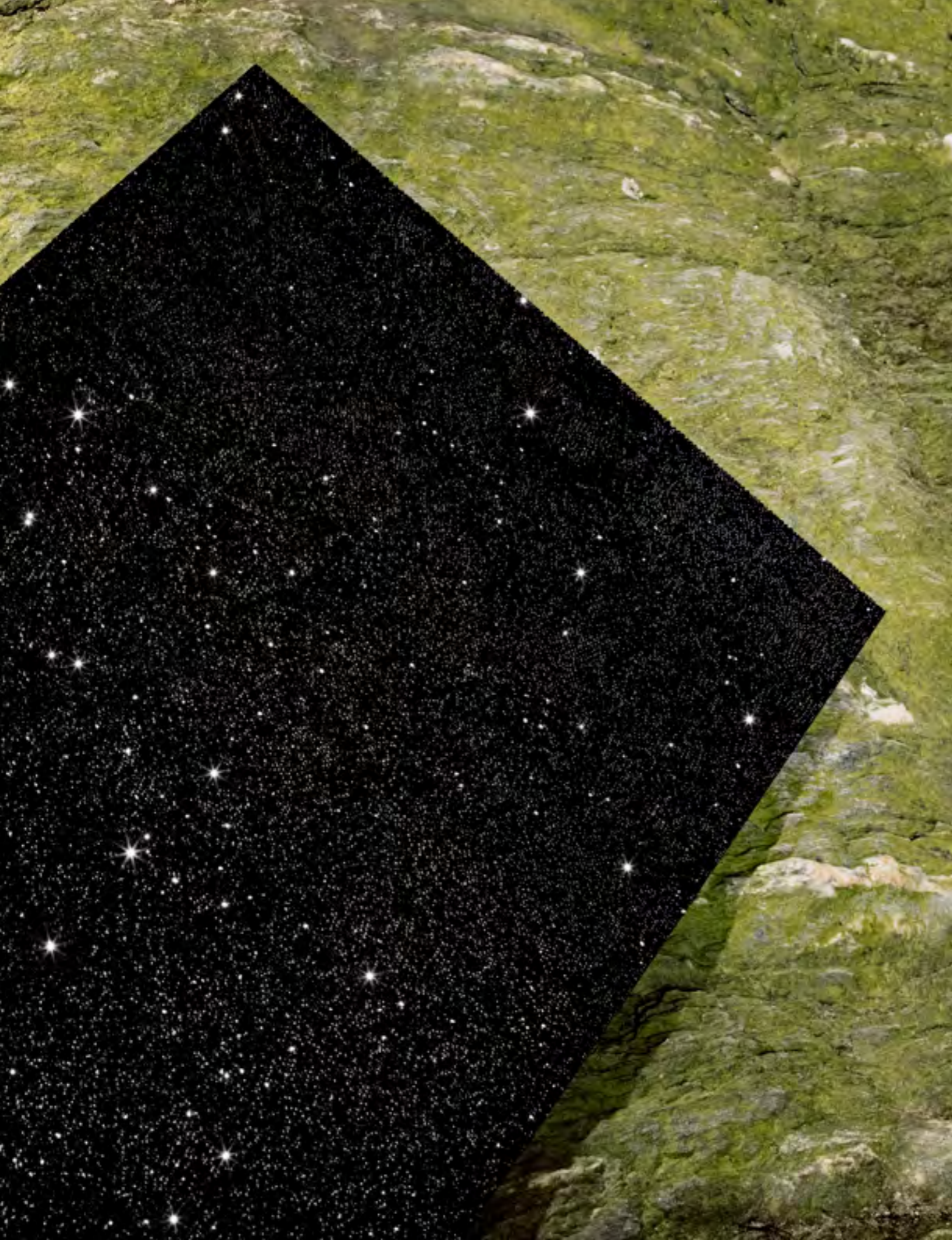
Active Panel



Active Panel with Logo Design



Active Panel



## CRYSTAL ROCKS

An all-time favorite and a brand-new favorite, Crystal Rocks and Crystal Fine Rocks truly “rock” every design. Their spiky yet smoothly sophisticated tactile surface creates stunning 3D effects.

Crystal Rocks or Crystal Fine Rocks, applied to aluminum, MDF or Corian



### CRYSTAL COLOR

Crystal Rocks and Crystal Fine Rocks  
Colors

*See page 46 - 47*

### CRYSTAL SIZE

PP 14 / 2,00 - 2,10 mm  
PP 22 / 2,80 - 2,90 mm

### SIZE

Max. 1500x3000 mm  
Min. 10x10 cm  
Other sizes on request

### SHAPE

Special shapes available

### WEIGHT

1x1 m, approx. 9 kg  
(weight depends on carrier)

### SPECIAL POSSIBILITIES

Printable on crystal surface

### APPLICATION

Wall decor  
Wall covering  
“Art”  
Interior inlay  
Column covering  
Furniture inlay  
Ceiling  
Doors  
Fabrics (ex. Alcantara®)  
Light fixtures

*See page 86 for additional information*

CRYSTAL ROCKS

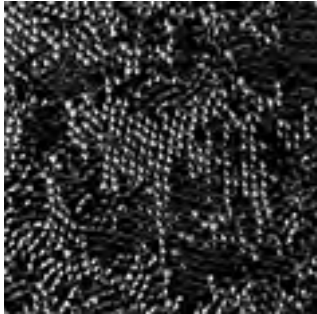


**PHILMI YACHT**  
(shown on right page)  
Interior Designer: Sandrine Melot

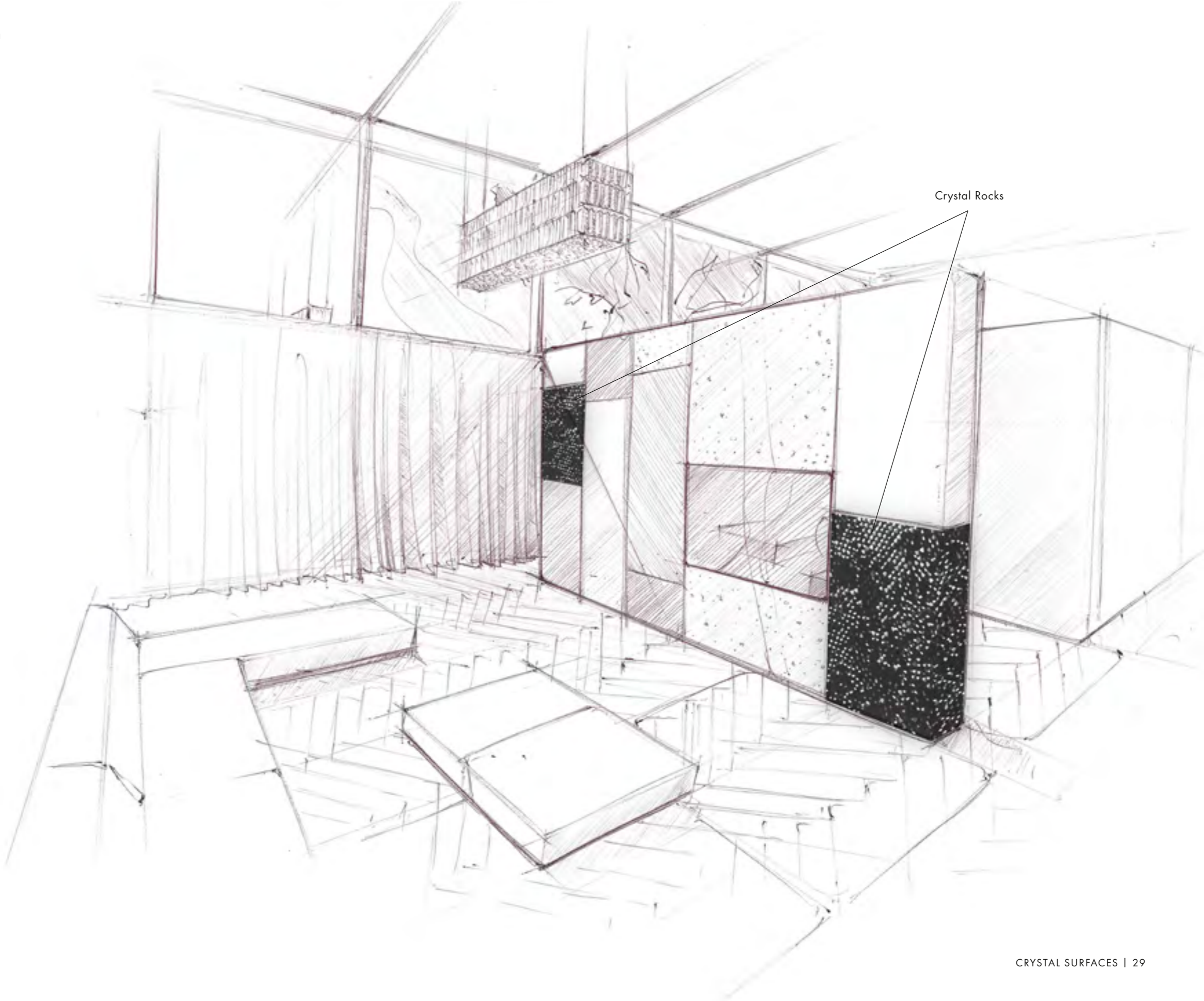


CRYSTAL ROCKS

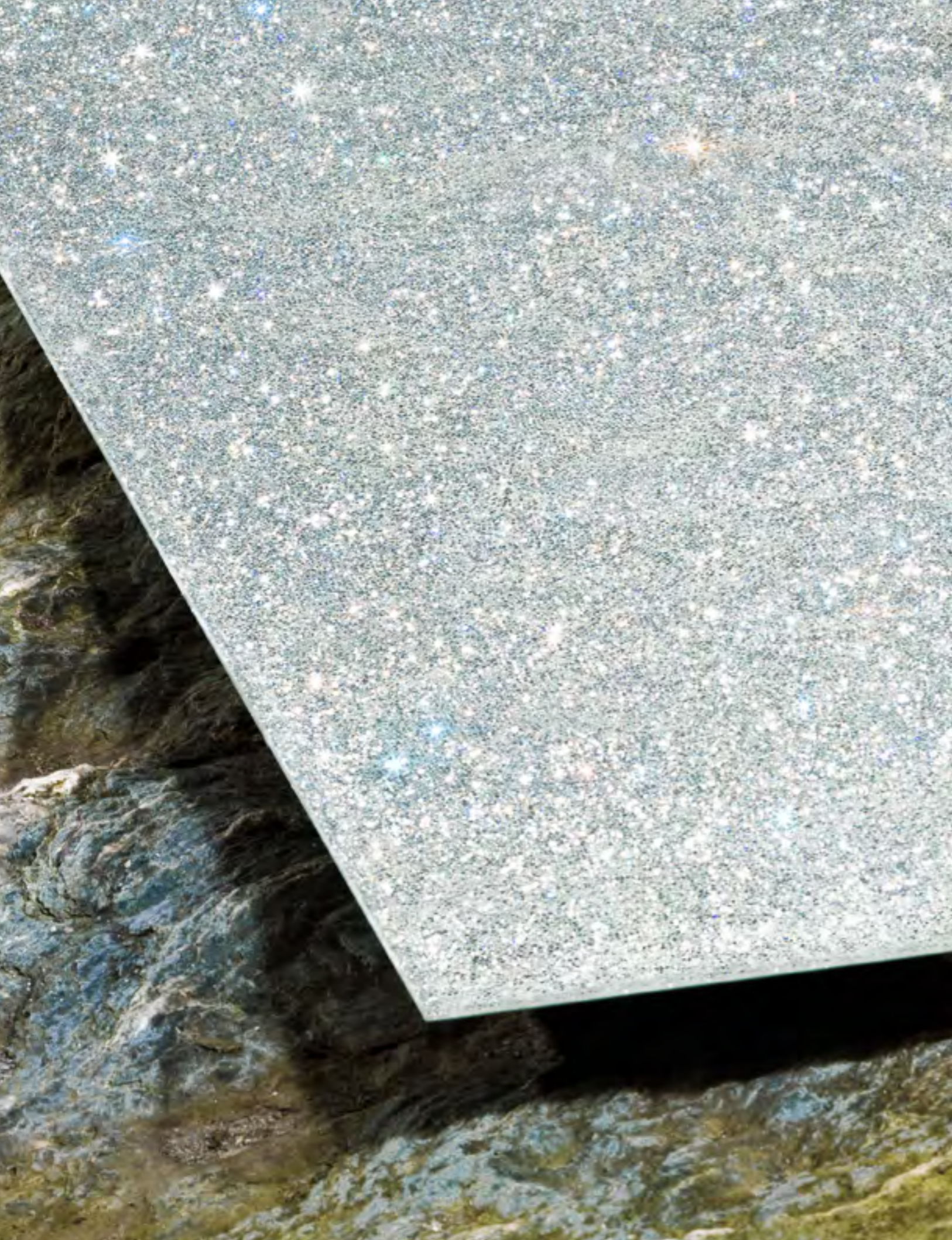
Spaces to feel relaxed and at home receive an extra glamour with carefully placed crystal design elements.



Crystal Rocks



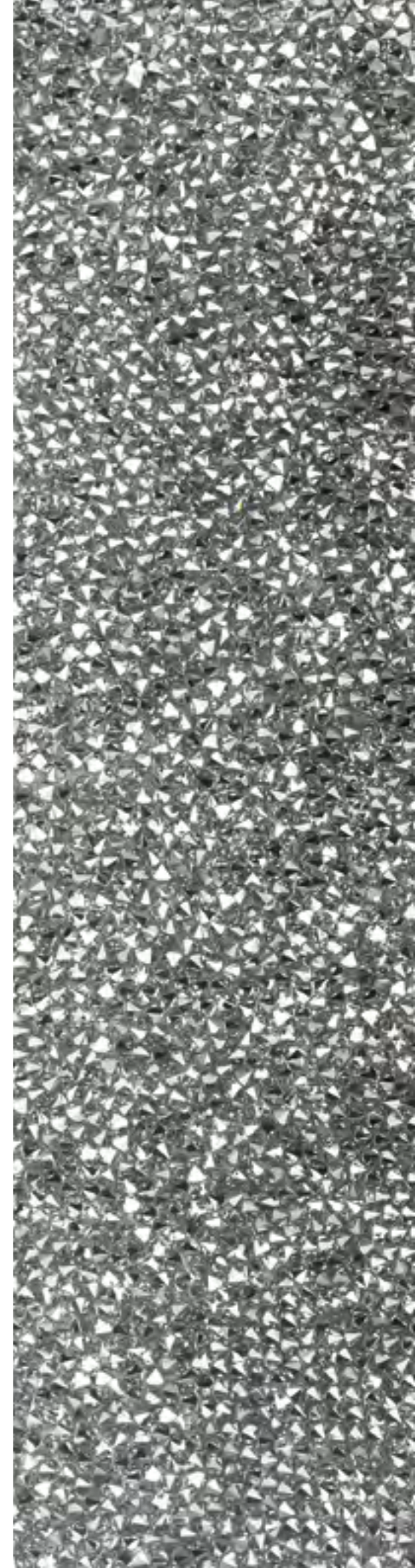
Crystal Rocks



## CRYSTAL COMPOUND

With Crystal Compound, designers enjoy the spectacular 3D effect of Crystal Rocks, but with being laminated between two layers of glass the surface is entirely smooth and perfectly even.

Crystal Rocks, laminated between two layers of clear glass (without design or metal frame)



### CRYSTAL COLOR

With transparent film:

Crystal Comet Argent Light (001 CAL),  
Crystal Metallic Light Gold (001 MLGLD),  
Crystal Golden Shadow (001 GSHA),  
Crystal Bermuda Blue (001 BBL),  
Crystal Metallic Light Gold & Crystal  
Golden Shadow (M103),  
Crystal Metallic Light Gold & Crystal Red  
Magma (M104)

With black film:

Jet Nut (280 NUT),  
Crystal Heliotrope (001 HEL),  
Crystal Bermuda Blue & Crystal Metallic  
Light Gold (M101),  
Crystal Bermuda Blue & Crystal Comet  
Argent Light (M102)  
Crystal Metallic Light Gold & Crystal  
Golden Shadow (M103),  
Crystal Metallic Light Gold & Crystal Red  
Magma (M104)

See page 46 - 47

### CRYSTAL SIZE

PP 22 / 2,80 - 2,90 mm

### SIZE

Max. 1500x3000 mm  
Min. 10x10 cm

### SHAPE

Special shapes available

### SPECIAL POSSIBILITIES

Printable on crystal surface

### APPLICATION

Indoor / outdoor application  
Table top  
Bar top and front  
Separator wall  
Flooring inlays  
Stairs  
Wall covering  
Doors  
Furniture inlay  
Mirrors  
Shower walls  
Balcony  
Facades  
Backsplash

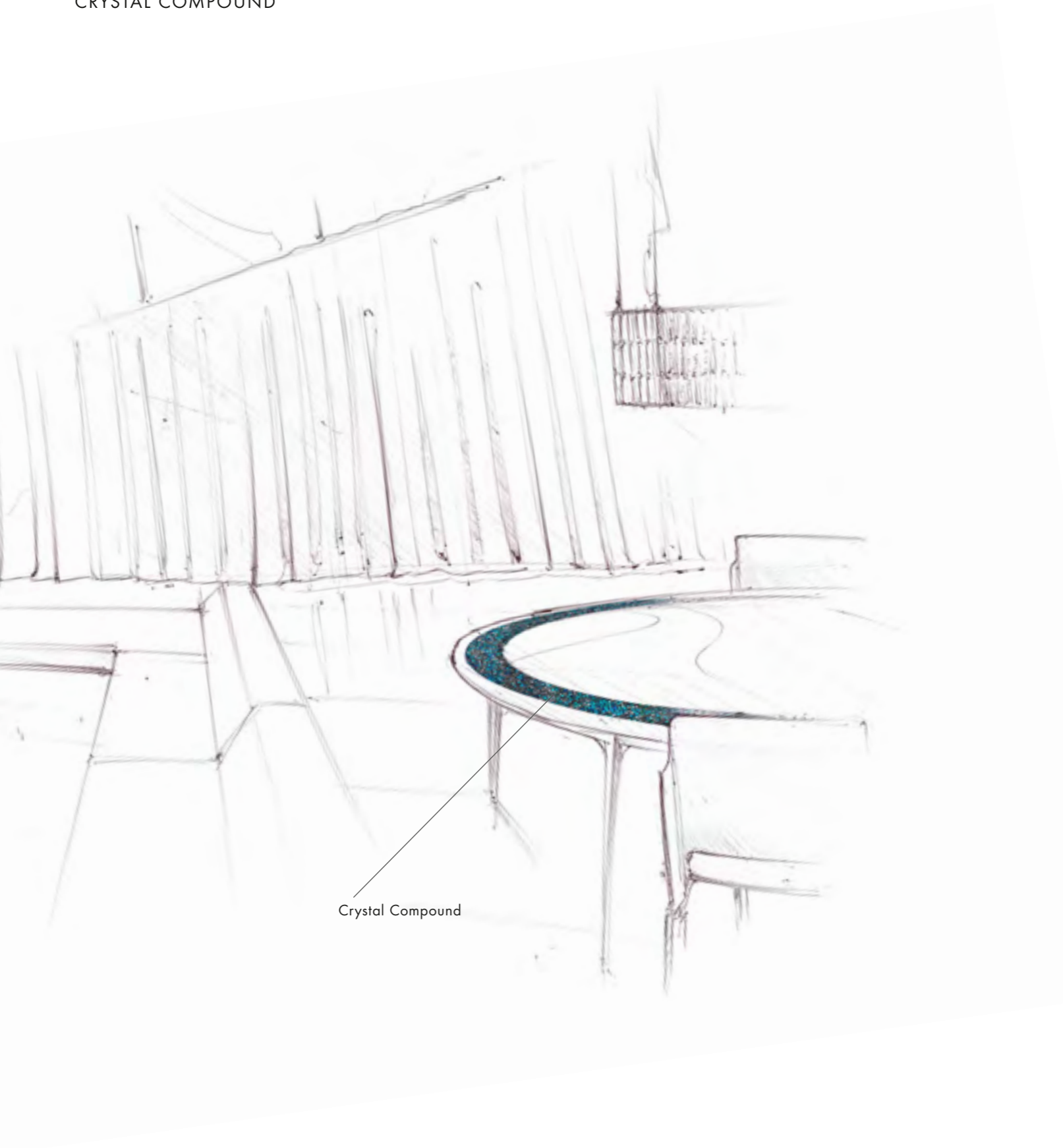
See page 86 for additional information



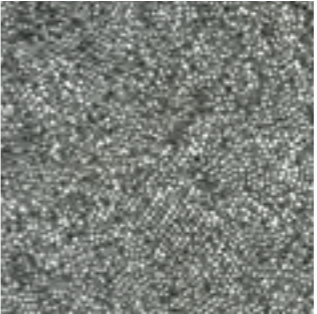
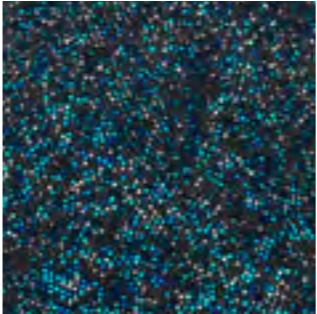
CRYSTAL COMPOUND

CRYSTAL COMPOUND MOTIF

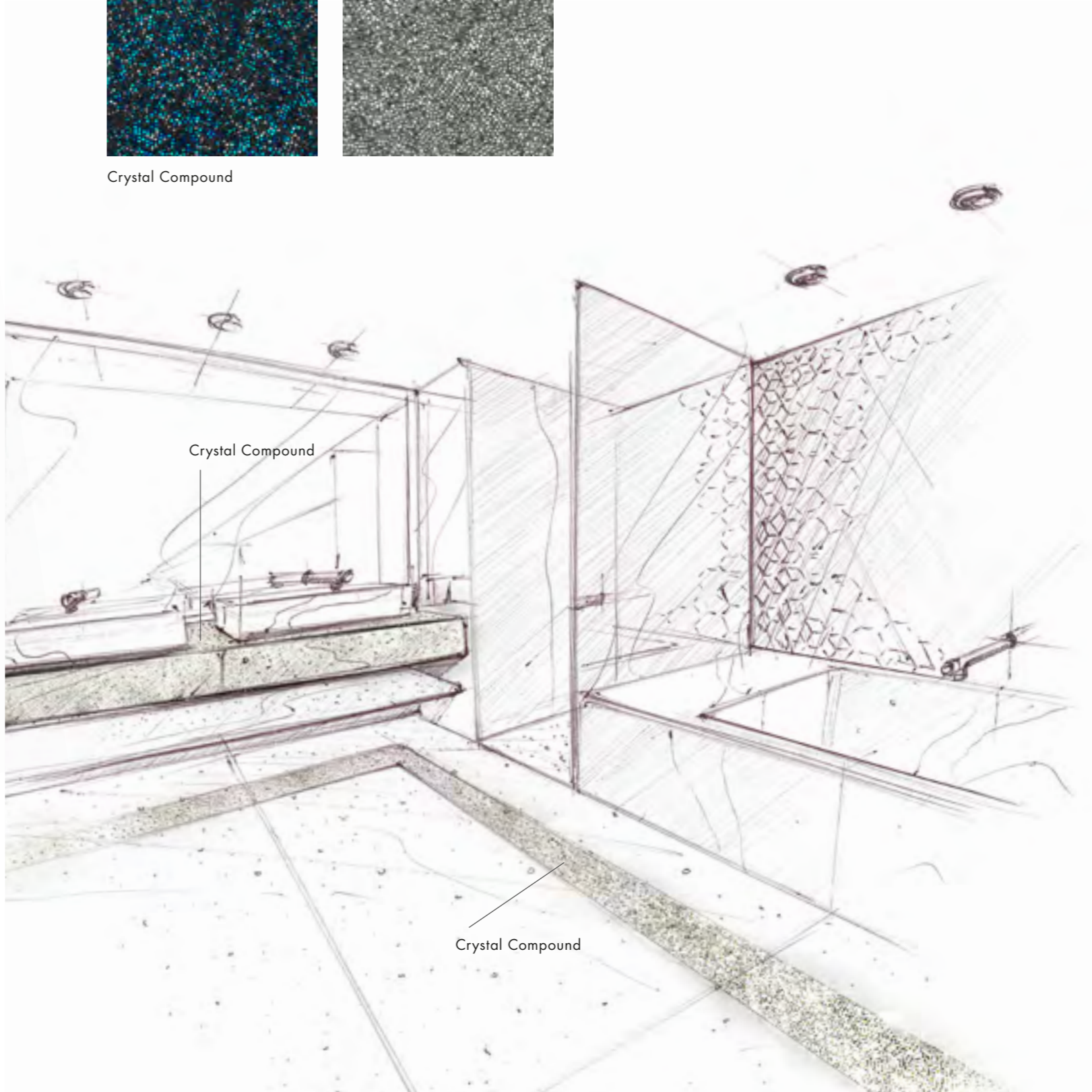




A bathroom is the flagship of every home. Crystal symbolizes purity and cleanliness, creating an elegant spa appeal with stunning depth and detail.

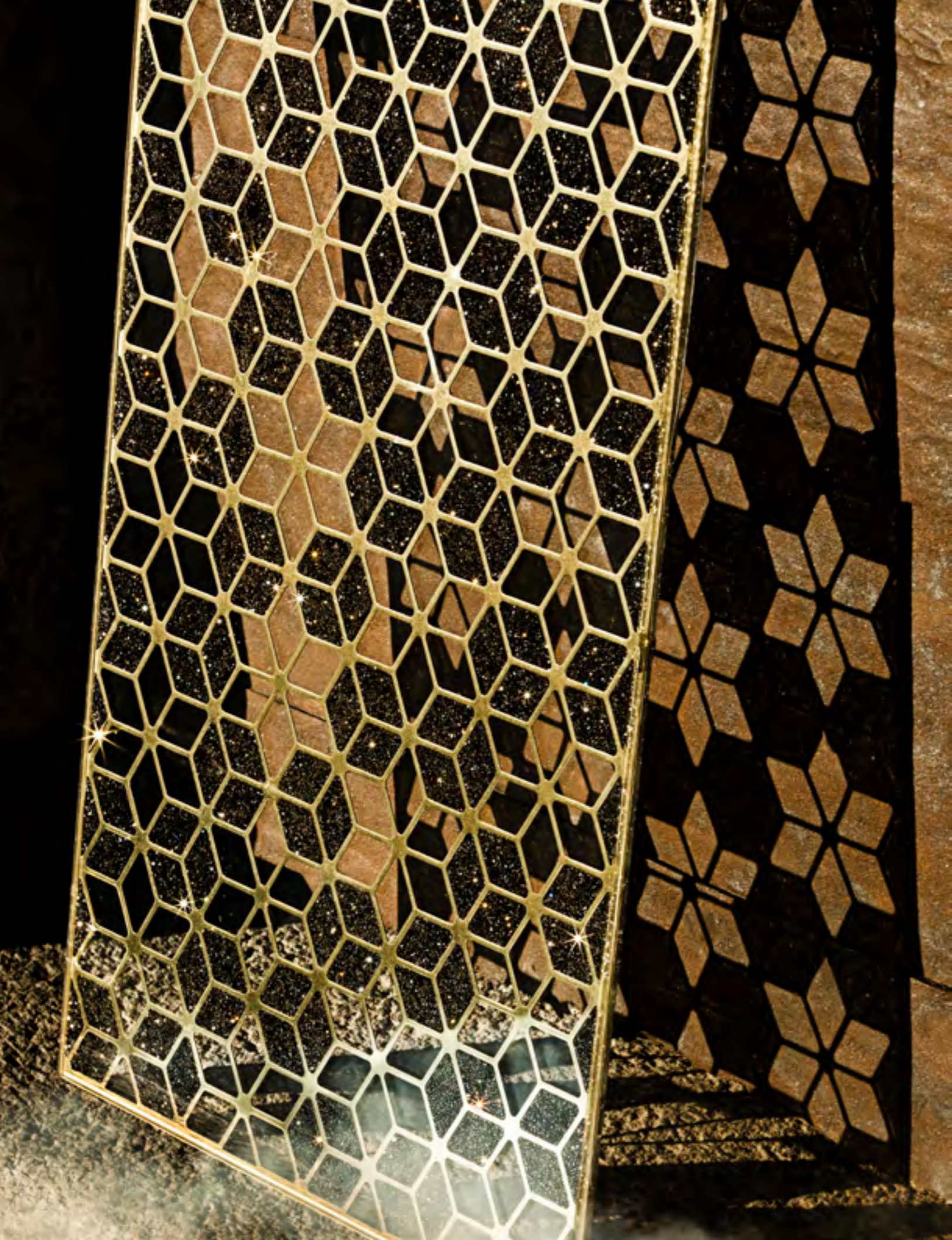


Crystal Compound



Crystal Compound

Crystal Compound



## CRYSTAL GRID

Using one of the up-to-date innovations from the Swarovski product range to its fullest effect, Crystal Grid features Crystal Rocks and Crystal Fine Rocks. This smooth element with its subtle sparkle can be laminated in three different ways:

### **SOFT SURFACE**

Crystal Rocks or Crystal Fine Rocks, applied with hotfix-technique on Alcantara® fabric

### **HARD SURFACE**

Crystal Rocks or Crystal Fine Rocks, applied on high-pressure laminate

### **COMPOUND SURFACE**

Crystal Rocks or Crystal Fine Rocks, laminated between two layers of clear glass





## CRYSTAL GRID SOFT SURFACE

Crystal Rocks or Crystal Fine Rocks, applied with hotfix-technique on Alcantara® fabric

### CRYSTAL COLOR

Crystal Rocks and Crystal Fine Rocks  
Colors

See page 46 - 47

### CRYSTAL SIZE

PP 14 / 2,00 - 2,10 mm  
PP 22 / 2,80 - 2,90 mm

### SIZE

Max. 1,4x15 m  
Min. 316x245 mm

### SHAPE

Special shapes available

### WEIGHT

1x1 m, approx. 3 kg

### SPECIAL POSSIBILITIES

Printable on crystal surface

### APPLICATION

Room divider  
Wall covering  
Doors  
Ceiling

See page 87 for additional information

## CRYSTAL GRID HARD SURFACE

Crystal Rocks or Crystal Fine Rocks, applied on HPL (high-pressure laminate) applied to aluminum, MDF or glass

### CRYSTAL COLOR

Crystal Rocks and Crystal Fine Rocks  
Colors

See page 46 - 47

### CRYSTAL SIZE

PP 14 / 2,00 - 2,10 mm  
PP 22 / 2,80 - 2,90 mm

### GRID

Stainless Steel or Stainless Steel Gold  
Plated grid with 2,5 mm  
Grid thickness: PP 14 1,5 mm;  
PP 22 2,5 mm

### SIZE

Max. 1500x3000 mm  
Min. 316x245 mm  
Other sizes on request

### SHAPE

Special shapes available

### WEIGHT

1x1 m, approx. 9 kg  
(weight depends on carrier)

### SPECIAL POSSIBILITIES

Printable on crystal surface

### APPLICATION

Room divider  
Wall covering  
Doors  
Ceiling

See page 87 for additional information





## CRYSTAL GRID COMPOUND SURFACE

Crystal Rocks or Crystal Fine Rocks, laminated between two layers of clear glass

### CRYSTAL COLOR

Crystal Rocks and Crystal Fine Rocks Colors

See page 46 - 47

### CRYSTAL SIZE

PP 14 / 2,00 - 2,10 mm  
PP 22 / 2,80 - 2,90 mm

### GRID

Stainless Steel or Stainless Steel Gold  
Plated grid with 2,5 mm  
Grid thickness: PP 14 1,5 mm;  
PP 22 2,5 mm

### SIZE

Max. 1500x3000 mm  
Min. 316x245 mm  
Other sizes on request

### SHAPE

Special shapes available

### WEIGHT

1x1 m, approx. 30 kg  
(weight depends on carrier)

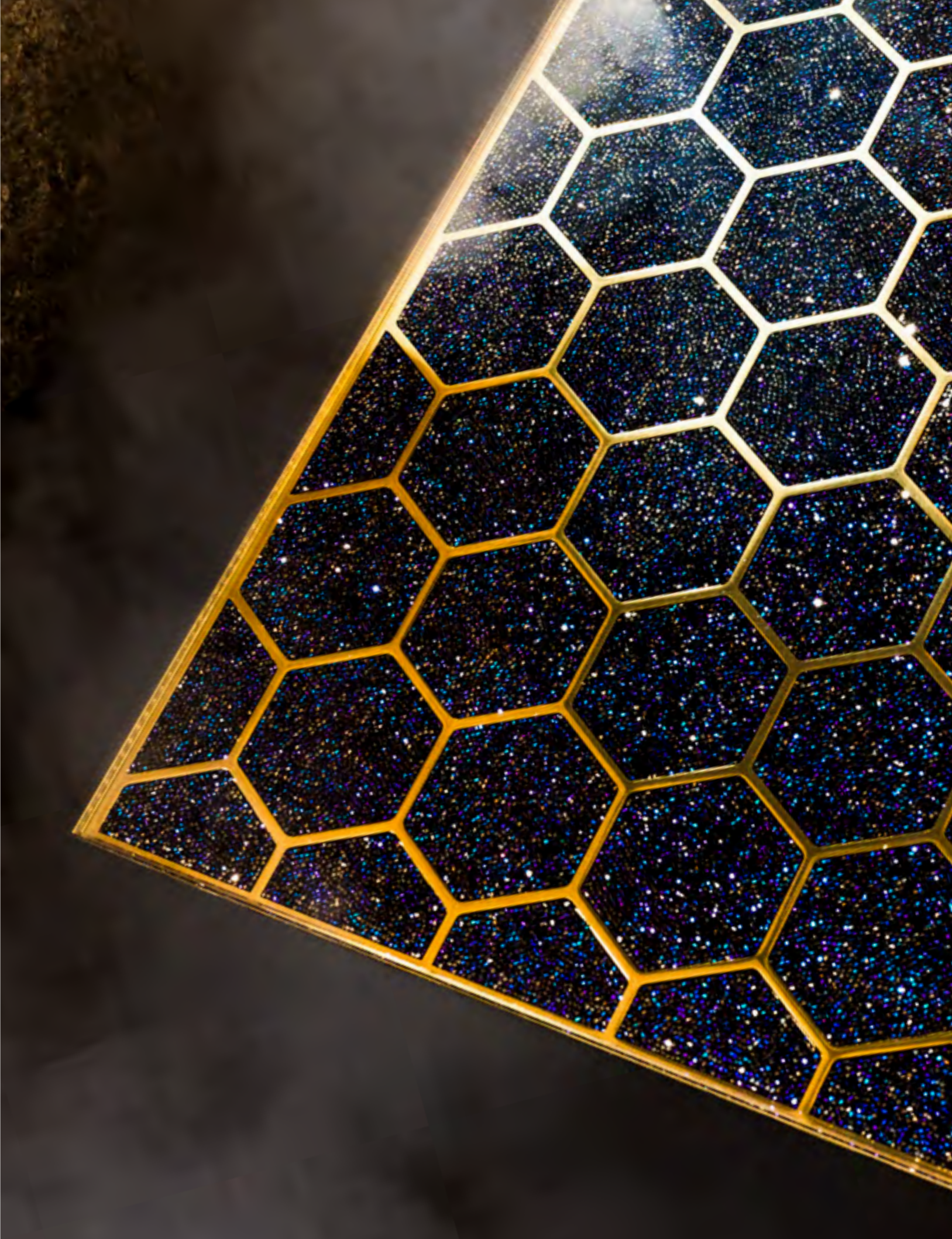
### SPECIAL POSSIBILITIES

Printable on crystal surface

### APPLICATION

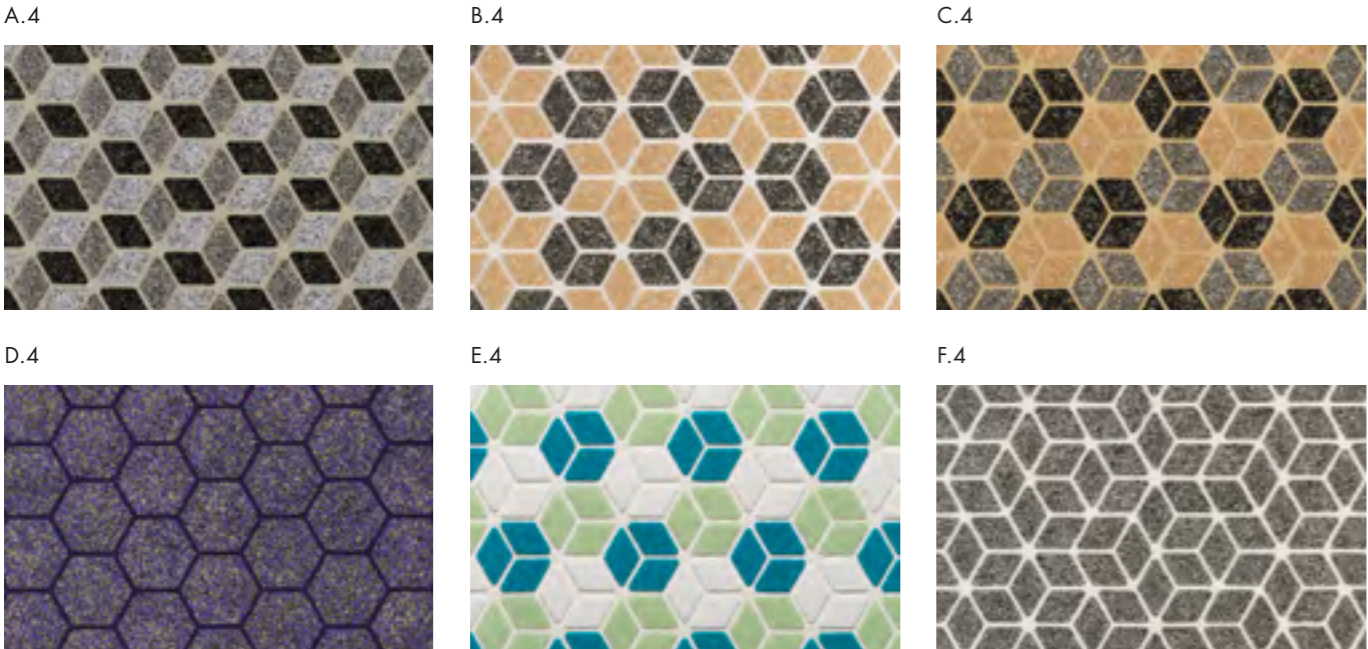
Room divider  
Wall covering  
Doors  
Ceiling

See page 87 for additional information

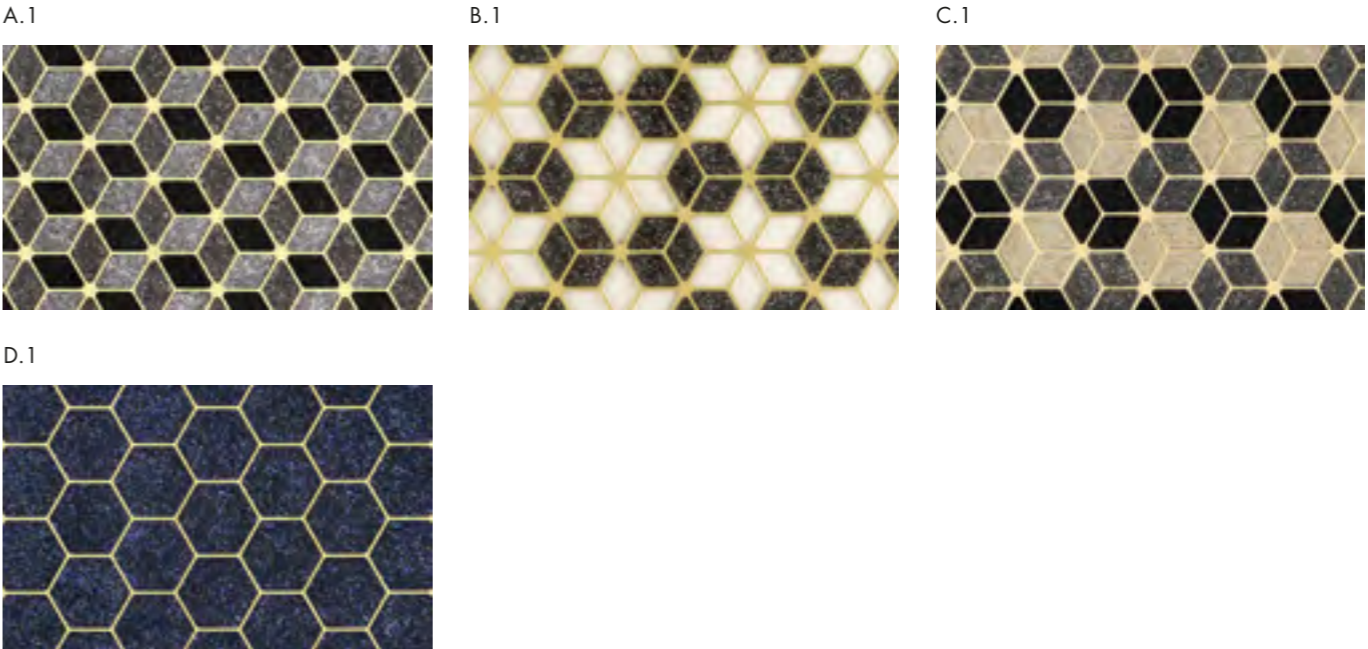


CRYSTAL GRID

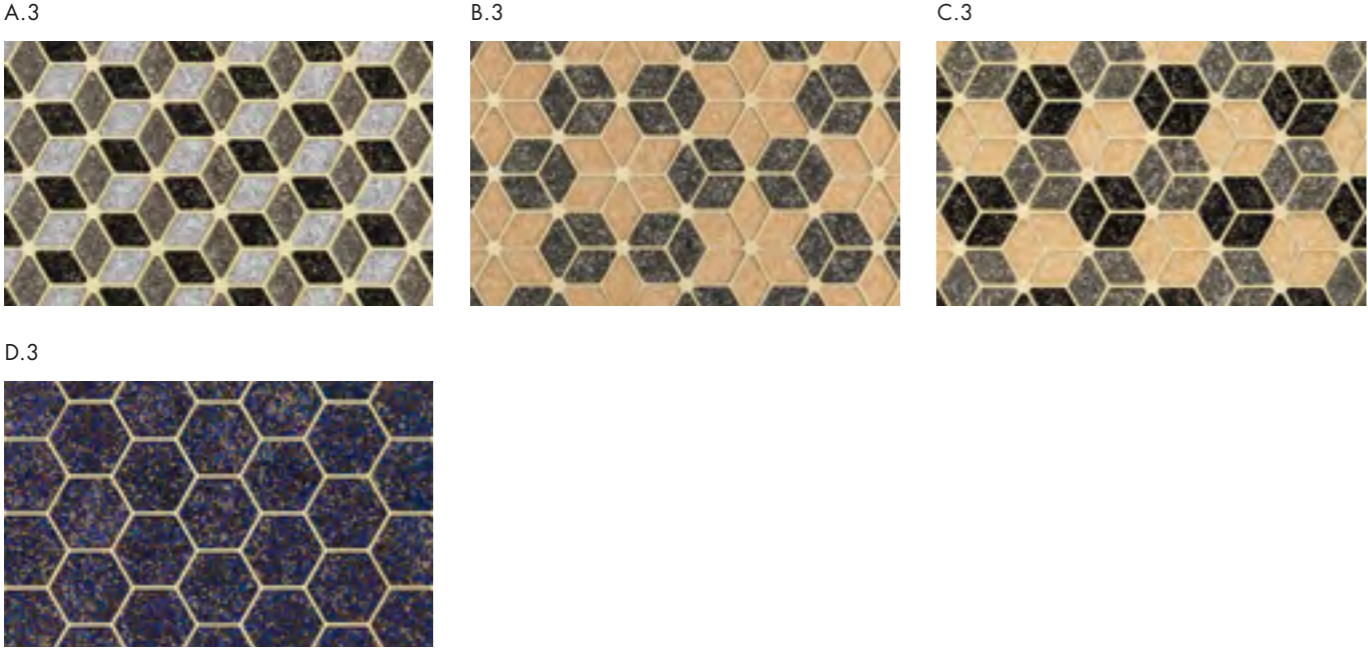
Overview of Soft Surface patterns



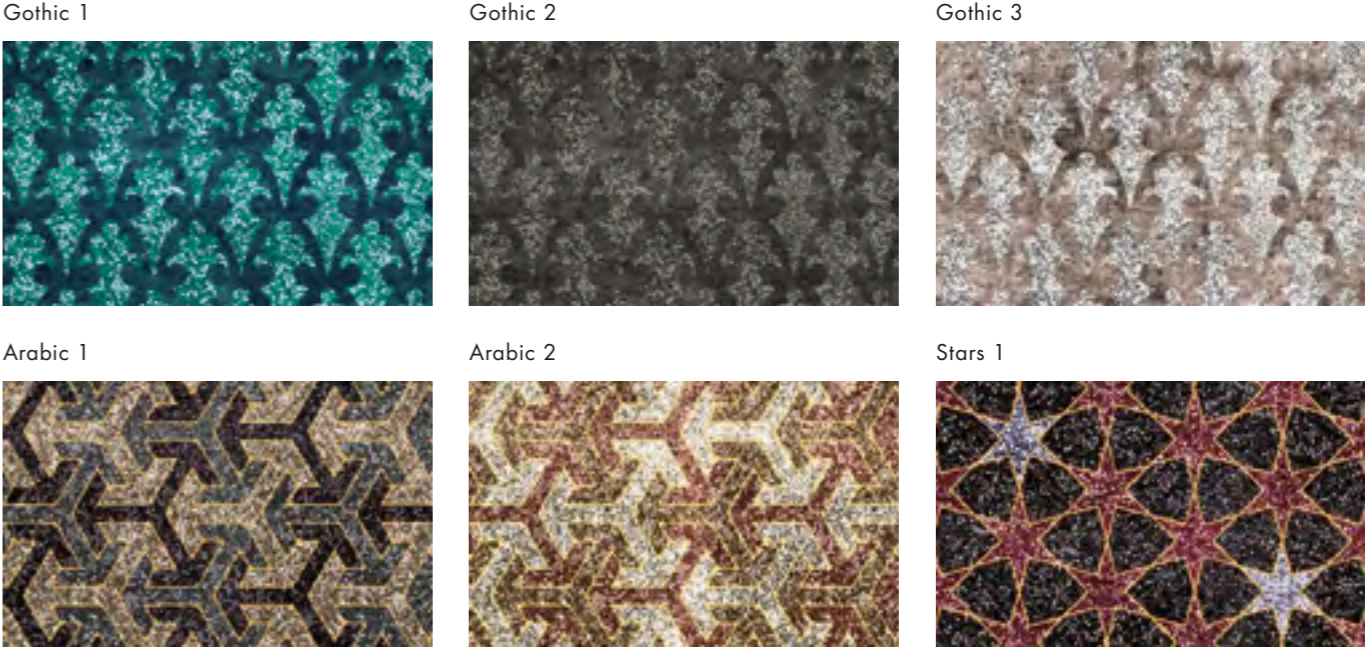
Overview of Compound Surface patterns



Overview of Hard Surface patterns

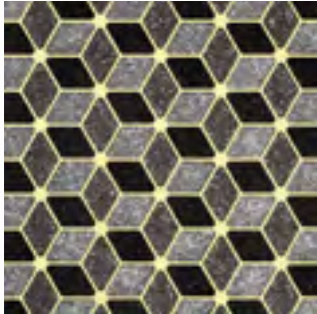


Our dedicated team of design experts will work with you to create your own inspirations  
*Customization possibilities based upon request*

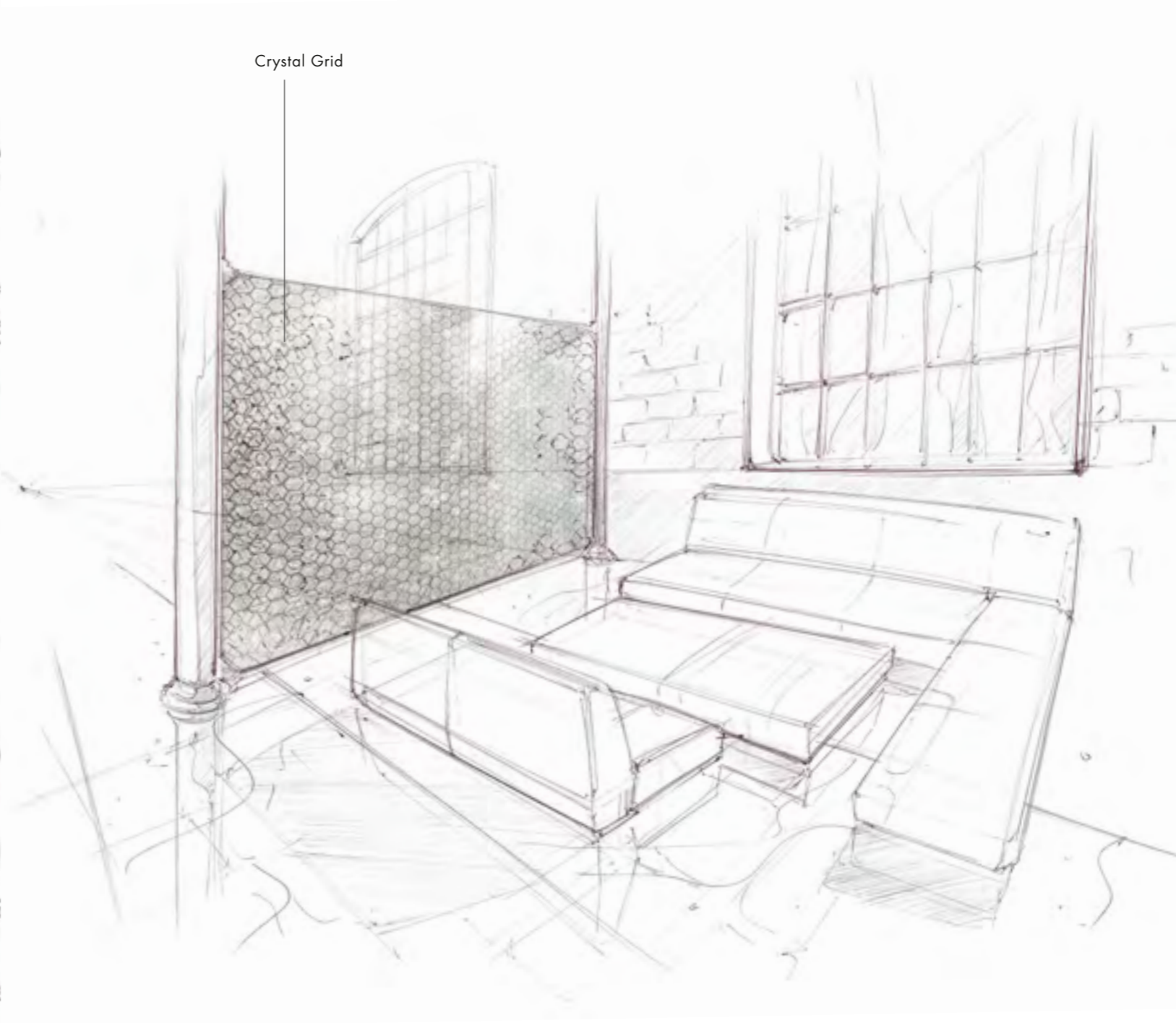


CRYSTAL GRID COMPOUND

Like stars on the night sky crystal, shines over a good sleep - or over those looking for a romantic ambience for life.



Crystal Grid



COLORS AND EFFECTS CRYSTAL ROCKS AND CRYSTAL FINE ROCKS

White Alabaster (281)  
Color of film: 010 Transparent



Crystal Moonlight (001 MOL)  
Color of film: 010 Transparent



White Opal F (234)  
Color of film: 010 Transparent



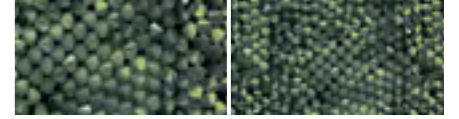
Mint Alabaster (397)  
010 Transparent



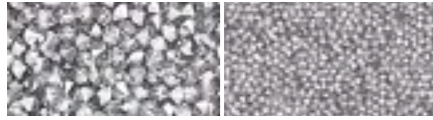
Chrysolite Opal (294)  
Color of film: 010 Transparent



Chrysolite Opal (294)  
Color of film: 012 Black



Crystal Comet Argent Light (001 CAL)  
Color of film: 010 Transparent



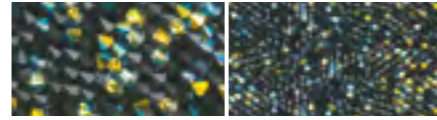
Crystal Aurore Boreale (001 AB)  
Color of film: 010 Transparent



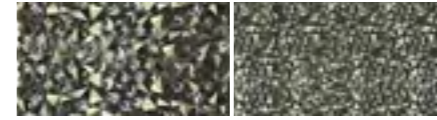
Crystal Silver Shade (001 SSHA)  
Color of film: 010 Transparent



Crystal Aurore Boreale (001 AB)  
Color of film: 012 Black



Crystal Metallic Light Gold (001 MLGLD)  
Color of film: 010 Transparent



Crystal Metallic Silver (001 METSI)  
Color of film: 010 Transparent



Crystal Golden Shadow (001 GSHA)  
Color of film: 010 Transparent



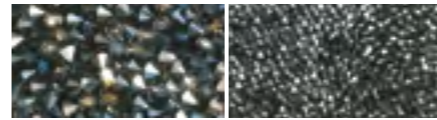
Peach Gold (M109)  
Color of film: 010 Transparent



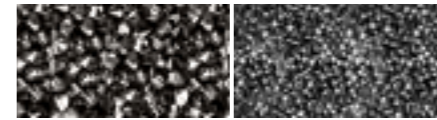
Peach Gold (M109)  
Color of film: 012 Black



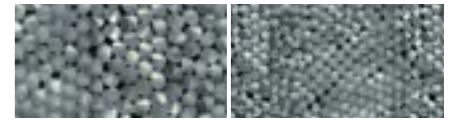
Crystal Silver Shade (001 SSHA)  
Color of film: 012 Black



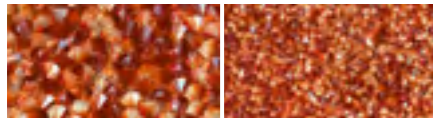
Crystal Metallic Silver (001 METSI)  
Color of film: 012 Black



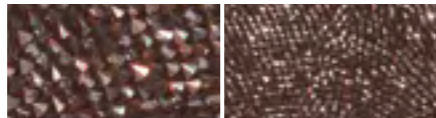
White Opal F (234)  
Color of film: 012 Black



Crystal Red Magma (001 REDM)  
Color of film: 010 Transparent



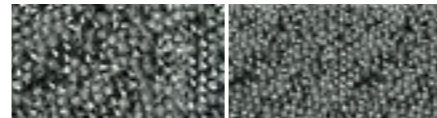
Crystal Red Magma (001 REDM)  
Color of film: 012 Black



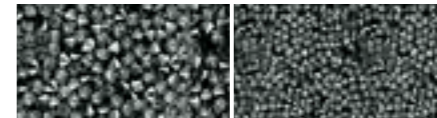
Jet Nut (280 NUT)  
Color of film: 012 Black



Crystal Chrome (001 CHRM)  
Color of film: 010 Transparent



Crystal Chrome (001 CHRM)  
Color of film: 012 Black



Jet (280)  
Color of film: 012 Black



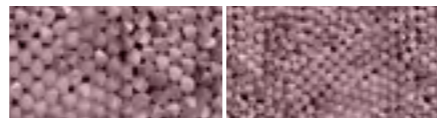
Rose Alabaster (293)  
Color of film: 010 Transparent



Rose Water Opal F (395)  
Color of film: 010 Transparent



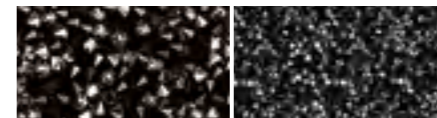
Rose Water Opal F (395)  
Color of film: 012 Black



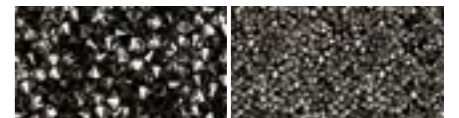
Jet  
& Crystal Comet Argent Light (M106)  
Color of film: 012 Black



Jet  
& Crystal Metallic Silver (M100)  
Color of film: 012 Black



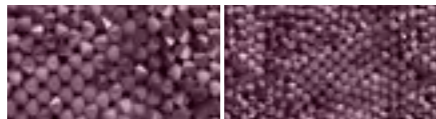
Crystal Metallic Light Gold  
& Crystal Golden Shadow (M103)  
Color of film: 012 Black



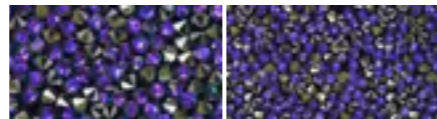
Cyclamen Opal (398)  
Color of film: 010 Transparent



Cyclamen Opal (398)  
Color of film: 012 Black



Crystal Heliotrope (001 HEL)  
Color of film: 012 Black



Crystal Metallic Light Gold  
& Crystal Golden Shadow (M103)  
Color of film: 010 Transparent



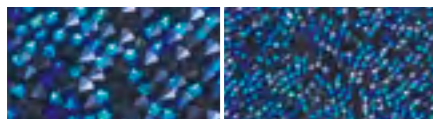
Crystal Metallic Light Gold  
& Crystal Red Magma (M104)  
Color of film: 010 Transparent



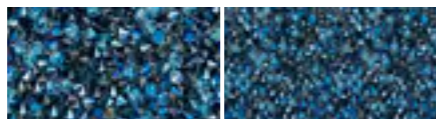
Crystal Metallic Light Gold  
& Crystal Red Magma (M104)  
Color of film: 012 Black



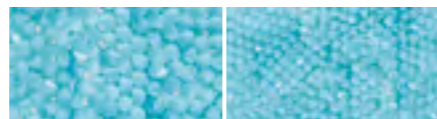
Crystal Bermuda Blue (001 BBL)  
Color of film: 012 Black



Crystal Moonlight (001 MOL)  
Color of film: 012 Black



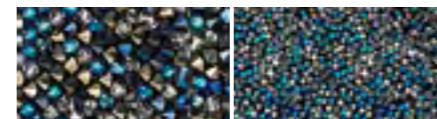
Turquoise (267)  
Color of film: 010 Transparent



Crystal Bermuda Blue  
& Crystal Comet Argent Light (M102)  
Color of film: 012 Black



Crystal Bermuda Blue  
& Crystal Metallic Light Gold (M101)  
Color of film: 012 Black







## CLASSIC PANEL

### Pear and Chaton

Realms of fantasy open up before the eyes as Classic Panels alter dimensional perception, making rooms appear wider and more spacious. Each individual crystal is carefully set in place by skilled hands, making the panel a unique creation able to transform the appearance of walls, ceilings, façades and even staircases. Whether kindled by sunlight or lit by artificial means, Classic Panel takes on a radiance that seems to come from within.

#### CRYSTAL SIZES

Pear version:  
Pears 38 mm and Octagons 18 mm

Chaton version:  
Chatons in different sizes from 2.1 to 11.3 mm

#### CRYSTAL COLOR

Pear version:  
Clear Crystal – other colors on request

Chaton version:  
Available in Clear Crystal, Topaz, Sapphire and Emerald\*

#### SIZE

Max.  
– 2000x2000 mm or 3000x1300 mm  
– Round panels: diameter 2000 mm  
– Lateral illumination: 2500x1200 mm

Min.  
– 200x200 mm  
– Lateral illumination: 310x310 mm

#### WEIGHT

Dependent on illumination type, motif, and density of crystals

Pear version:  
– Ceiling application: approx. 50 kg  
– Wall application: approx. 35 kg

Chaton version:  
– Ceiling application: approx. 47 kg  
– Wall application: approx. 32 kg

#### APPLICATION

Interior or exterior  
(excluding lateral LED illumination;  
suitable for interiors only)

Wall  
Ceiling (safety glass)  
Floor (safety glass)

See page 88 for additional information

\*These chatons are not for sale as single components.



CLASSIC PANEL



Classic Panel signs create brilliant custom motifs

**AL FAISALIAH HOTEL,  
A ROSEWOOD HOTEL**  
Classic Panels add a sophisticated touch to lounges.

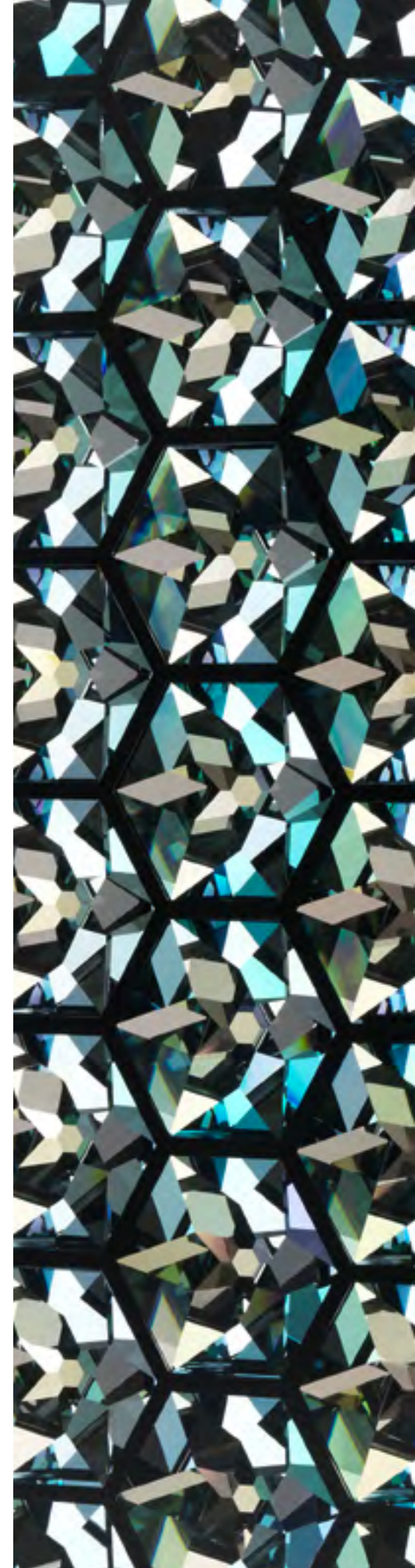




## HEXAGON PANEL

With its world-famous honeycomb design, Swarovski has already pushed architectural boundaries. Hexagon Panel is an homage to this one-of-a-kind surface effect, that has sparkled on spectacular facades all over the world.

Crystal in a hexagon shape is applied onto a front glass sheet creating stunning depth and detail.



**CRYSTAL COLOR**  
Crystal (001)

**CRYSTAL SIZE**  
65 mm

**BACK MATERIAL  
(CARRIER MATERIAL)**  
Grid: transparent, black or white  
Back lacquering: without lacquer, black or white

**SIZE**  
Max. 1500x3000 mm  
Min. 316x245 mm

**WEIGHT**  
1000x1000 mm, approx. 40 kg

**APPLICATION**  
Wall decoration  
Room panel  
Room divider  
Facade front glass  
Bar / reception desk  
Doors

*See page 88 for additional information*

HEXAGON PANEL



**SWAROVSKI BASELWORLD BOOTH,**  
Basel, Switzerland

**SWAROVSKI KRISTALLWELTEN BAR,**  
Wattens, Austria (shown on right page)



CRYSTAL SURFACES

Day or night, summer or winter, with a crystal interior lounges and bars sparkle around the clock.

Hexagon Panel on wall

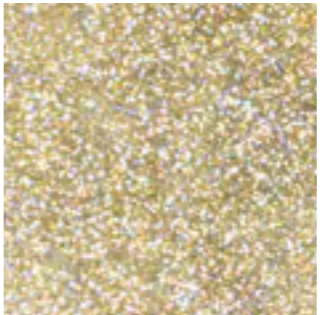
Active Panel strip on ceiling

Classic Panel

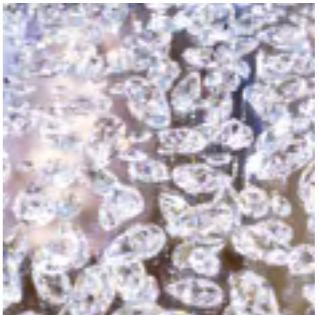
Crystal Compound



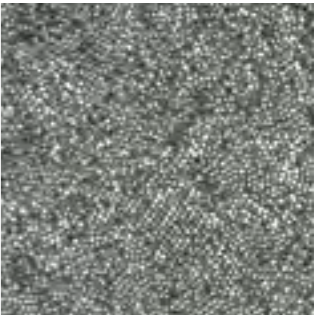
Hexagon Panel



Active Panel



Classic Panel



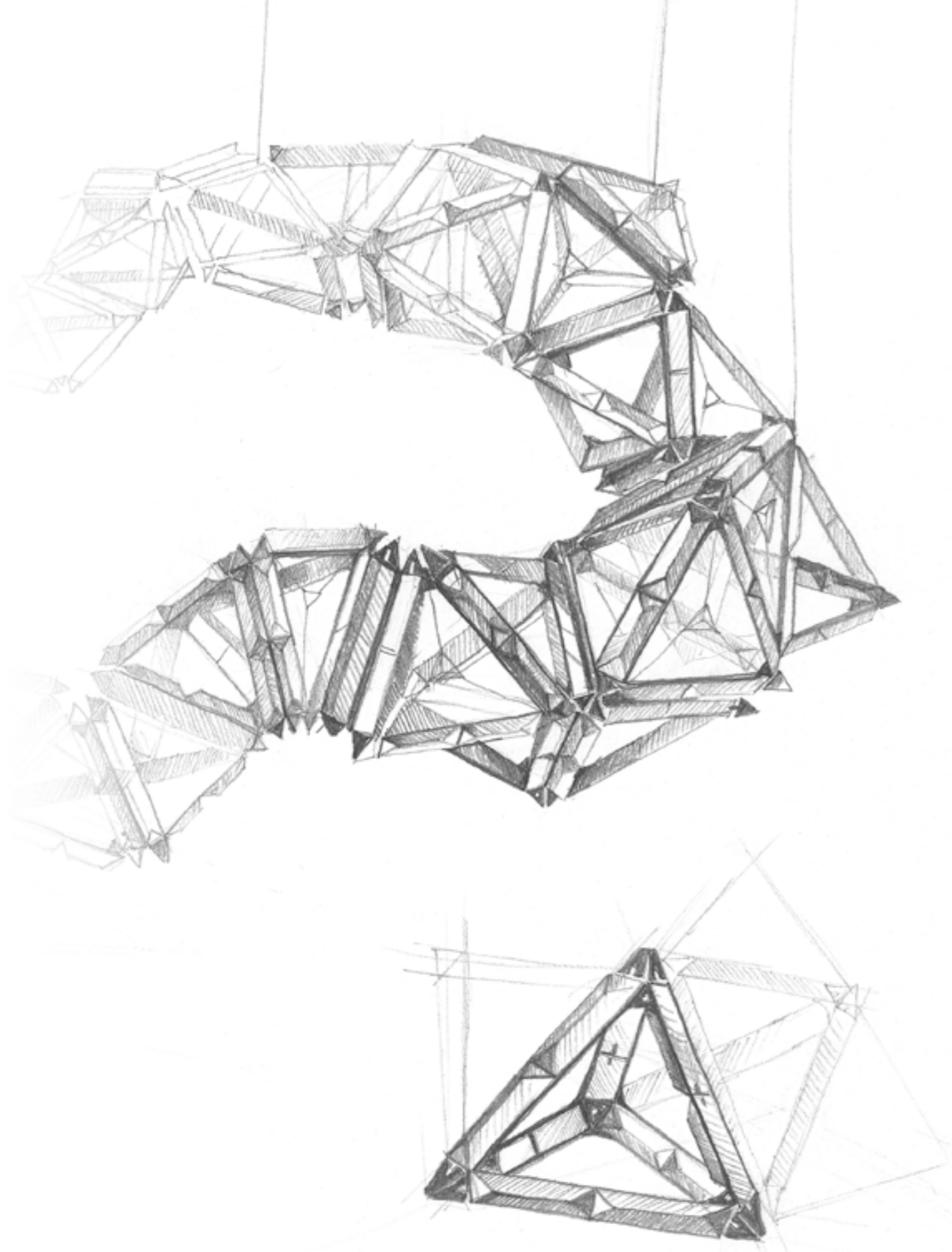
Crystal Compound

# BESPOKE LIGHTING

Our bespoke lighting designs capture and communicate a broad spectrum of styles, showcasing the highest technical standards of modern illumination. We work with our customers to open up many different ways of combining light sources to suit any room design.

60 CUSTOMIZATION PROCESS  
62 DESIGN INSPIRATIONS

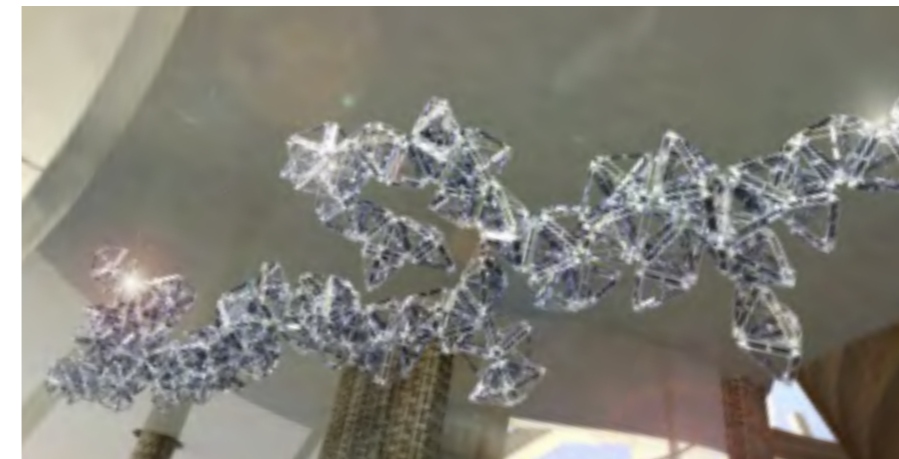




## YOUR IDEA - OUR CHALLENGE

Being the specialists in lighting and interior, we provide a unique service to the design and architectural sector. With the help of the collective creative competence offered by Swarovski, our expert team of architects, lighting planners and technicians, interior designers, product designers and engineers transform crystal into premium decorative lighting elements and solutions - following your creative vision.

Our design team helps you realize your own ideas with crystal, providing full service from sketch to grand opening.



DESIGN INSPIRATIONS

**SYMPHONIA CHANDELIER**  
A modern translation of timeless candle light



**CRYSTAL NEST**  
Contemporary nature-inspired design accented with crystal beads







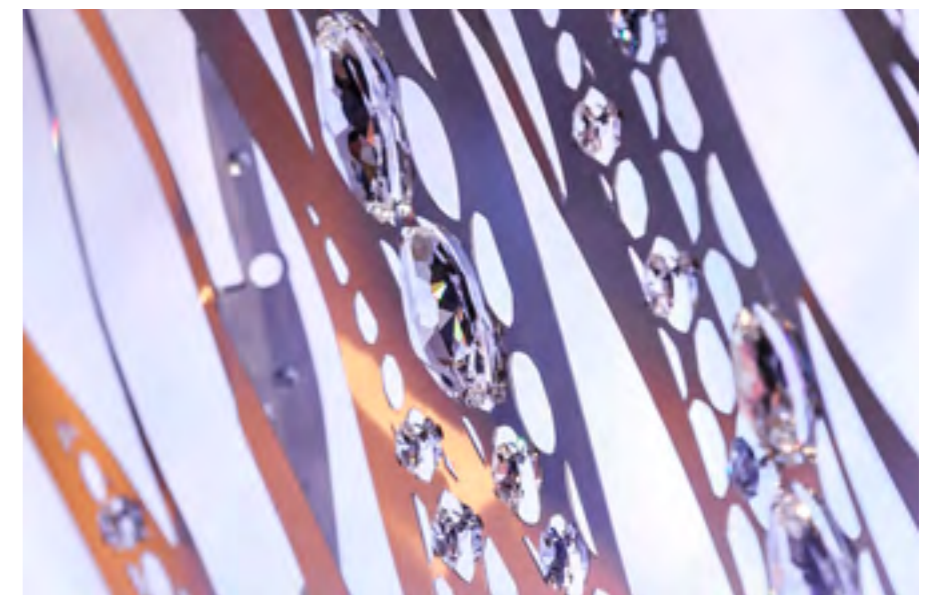
## DESIGN INSPIRATIONS



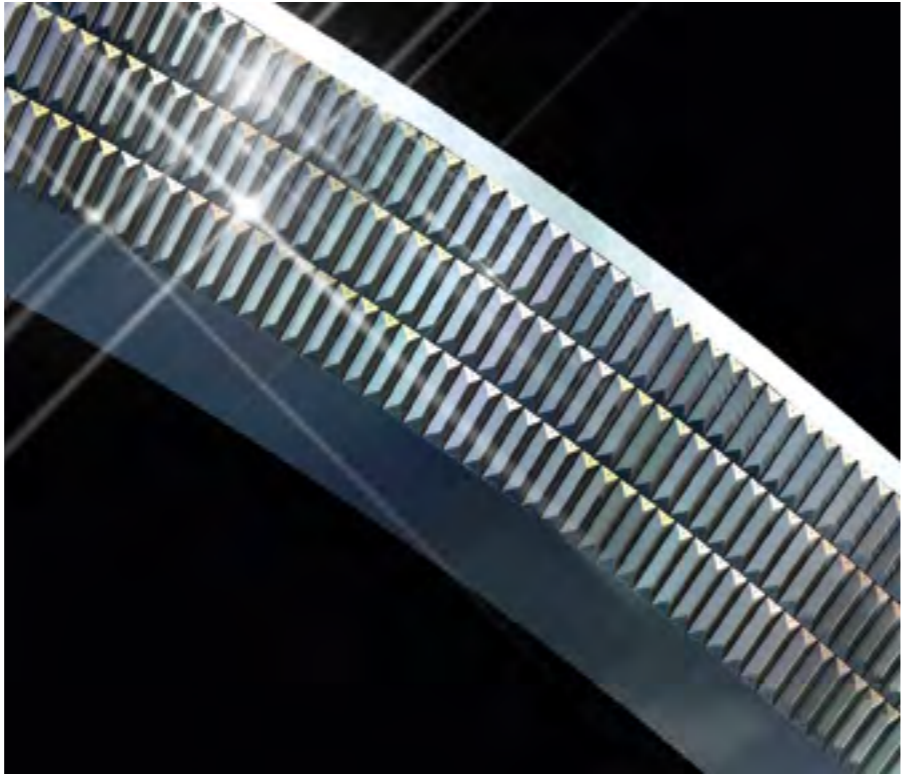
### **SHIMMERING SEA**

Like the play of light on the wave of an infinite sea, Shimmering Sea holds you in its magic spell. Its sparkling reflections suggest feelings of both wellbeing and limitless freedom.

This Crystal Art Piece is a meditation on the many moods of the ocean, as various light sources work to transform and abstract it into a crystal medley of watery art.



DESIGN INSPIRATIONS

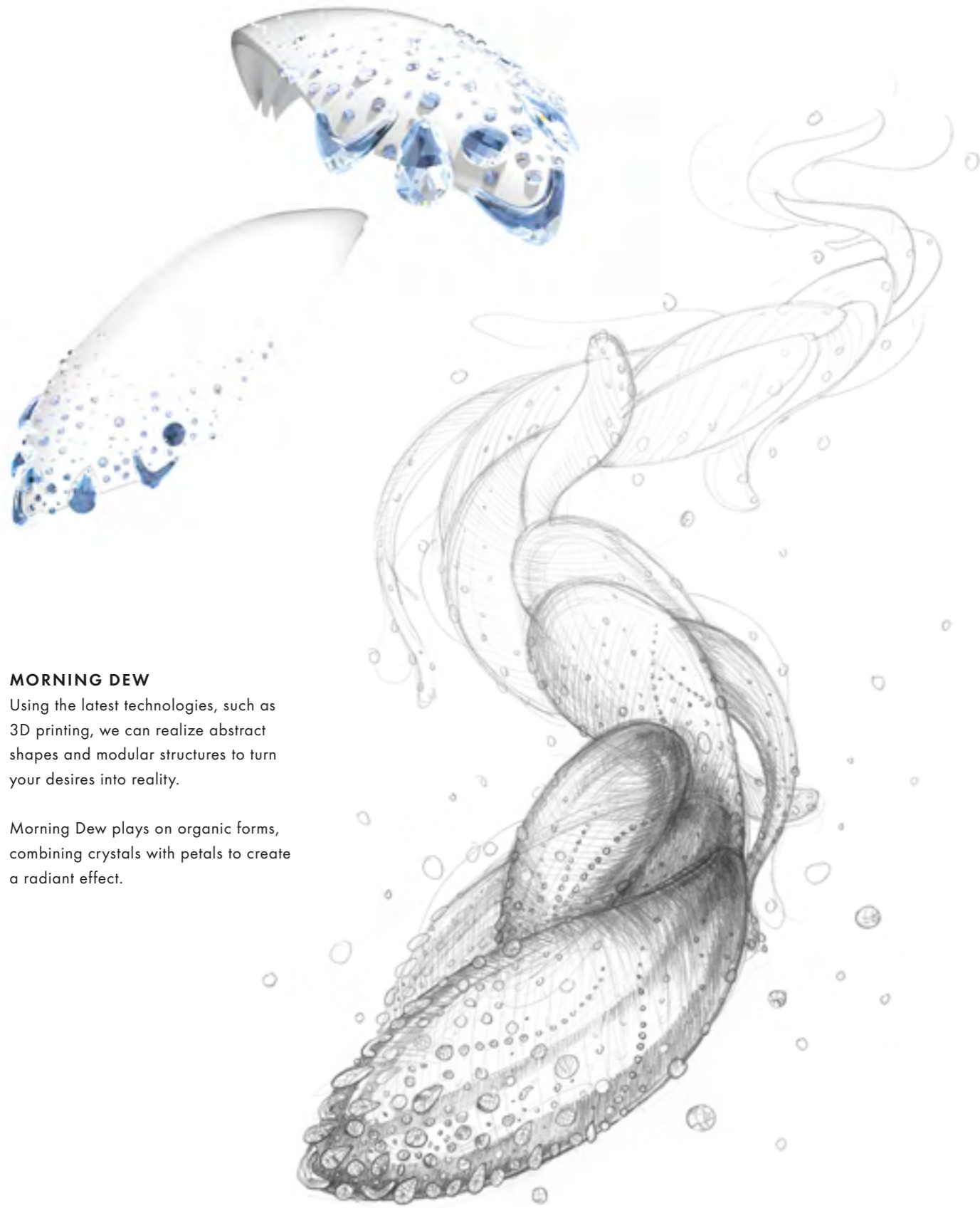


**INFINITY RING CHANDELIER**  
An infinite reinterpretation of light using multifaceted rectangular prisms



**OLOIDS**  
Conglomeration of crystal luminaries creating an overall magical organic touch





**MORNING DEW**

Using the latest technologies, such as 3D printing, we can realize abstract shapes and modular structures to turn your desires into reality.

Morning Dew plays on organic forms, combining crystals with petals to create a radiant effect.



## PROJECT REFERENCES

Throughout our history, our specialists have gathered an impressive portfolio of international project commissions both in the high-end leisure and residential sectors. Swarovski crystal has showered the world's most prestigious stages with light, be it the Metropolitan Opera in New York, the Oscars ceremony, or the Palace of Versailles.





### **CRYSTAL CLOUD AND MIRROR POOL**

Swarovski Kristallwelten , Austria

Architect / Designer: Andy Cao and Xavier Perrot, 2015

Swarovski Products: bespoke installation

The crowning piece of the new garden is the Crystal Cloud, created by Andy Cao and Xavier Perrot. This monumental installation drifts above the black Mirror Pool, inviting visitors to pause for moment and be inspired.

With a surface of around 1,400 square meters, this mystical masterpiece is the largest work of its kind in the world. The Crystal Cloud consists of around 800,000 hand-mounted Swarovski crystals.

A descending path draws visitors to the Mirror Pool where the crystals' light is captured like stars shimmering in the nocturnal sky – even in broad daylight. The innumerable fireflies create magic light; as if in an enchanted fairytale garden, they flit and dance through the air and accompany the visitors across the footbridge.

## HYATT REGENCY DUBAI CREEK HEIGHTS

Dubai, UAE

Completion: 2015

Swarovski Products: Swarovski Classic Panels

The Hyatt Regency Dubai Creek Heights is the fifth Hyatt-branded hotel in the city. The 464-room hotel offers distinctive design features, including a spacious lobby filled with 1,000 square meters / more than 3,200 square feet of plant walls, flowers and greenery, along with soothing water features and a towering glass ceiling embossed with Swarovski crystals. The open-to-the-sky view helps to bring the outdoor space into the heart of the hotel and illuminates the interior with the city's year-round sunshine.





## EISPRINZESSIN AND KRISTALLKÖNIGIN

Regensburg, Germany

Architect / Designer: Griesser & Mayerhofer, 2011

Swarovski Products: Bespoke Crystal Blossom Chandelier, Classic Panels, Vega, Octa, Crystal StarLED

Following the great success of the "Kristallschiff" (Crystal Cruiser), the shipping company decided to establish a crystal fleet that has been extended by the "Kristallprinzessin" (Crystal Princess) and the "Kristallkönigin" (Crystal Queen). Both vessels fascinate with the sparkling interior, including crystals stairs with over 100.000 single crystals, bars, starry skies, a giant crystal crown, a sparkling maze and a glamorous chandelier in the form of a towering tree.





**PRESIDENTIAL SUITE, ROSEWOOD HOTEL**

Abu Dhabi, UAE

Partner: Completion BBG-BBGM, New York, 2013

Swarovski Products: Swarovski Glitterbox by Georg Baldele, Bespoke Crystal Chandeliers

The Rosewood Hotel in Abu Dhabi is described as “palatial luxury” inspired by the “glistening Arabian Gulf.” In the Presidential Suite, a breathtaking, horizontal Glitterbox from the Swarovski Crystal Palace Collection serves as a dazzling centerpiece, while the entrance area greets visitors with three glittering custom chandeliers.





### **NATIONALPARK HOHE TAUERN**

Mittersill, Austria

Architect / Designer: FS Architekten, 2007

Swarovski Products: Classic Panels

National Park Worlds look like a cloven rock: The breach, which appears to disrupt the structure, reveals three crystal veins due to the use of 18 outdoor Classic Panels illuminated by LED's. With crystal lacquer applied to enable color changes, the installation lives in perfect harmony with the façade.

**ASPEN BY KEMPINSKI**

Dubai, UAE

Completion 2013

Swarovski Products: Classic Panels

The Aspen by Kempinski at Kempinski Hotel Mall of the Emirates celebrates the European tradition of a grand café at one of the largest malls in the Middle East. Lining the entrance foyer are six sparkling Classic Panels, framed with timber and stainless steel. The panels - the largest set of crystal panels in the UAE - are encrusted with approx. 14,000 Swarovski crystals.





## **BASF FEIERABENDHAUS**

Ludwigshafen, Germany

Architect / Designer: Nike Fiedler Architekten, 2011

Swarovski Products: Bespoke Crystal Chandeliers

Built in 1913, this multi-functional building hosts restaurants and a lavish concert hall, sponsored and used by BASF, the biggest chemical company in the world. In 2011, comprehensive renovation works were completed, including eight chandeliers each weighing 300 kg and sporting over 3.000 Swarovski crystals, thus reviving the turn-of-the-century glory of the venue.



Additional information on Crystal Surfaces

ACTIVE PANEL

**STRUCTURE**

Open structure with crystal on surface  
Closed structure with glass on surface

**FRONT GLASS TYPE**

ESG Optiwhite

**FRONT GLASS THICKNESS**

6 mm, 8 mm

**BACK LIGHTING**

Sheet: 9,4x9,4 mm (25 LED's)

Led 4000K

6,5 lm / LED

101,6 lm / W

U = 24 VDC

I = 90 mA / Sheet

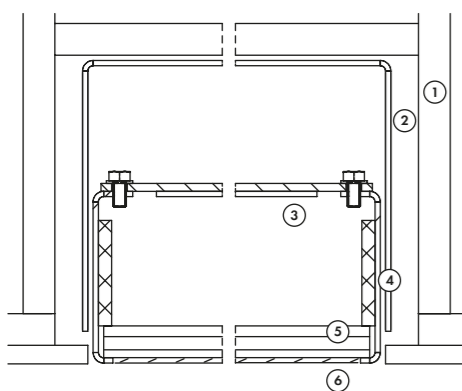
P = 2,16 W / Sheet

max. 60 Sheets / power supply

**BENEFITS**

- Combining crystal and LED for unique ambient solutions, connectable to home automation systems, dimmable
- Customized print and endless color and design options for truly unique results
- Frameless solutions, open and closed structure possibilities
- Red Dot Design Award 2015

**MOUNTING INSTRUCTION**



- ① Wall
- ② Substructure
- ③ LED
- ④ Casing
- ⑤ Carrier glass
- ⑥ Crystal

CRYSTAL ROCKS

**STRUCTURE**

Open structure

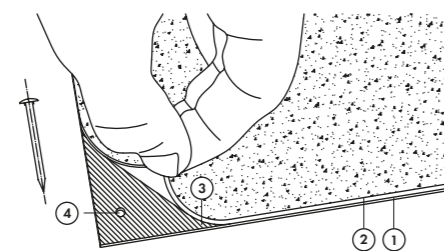
**BACK MATERIAL**

Aluminium, MDF, Corian

**BENEFITS**

- Asymmetrical crystal pattern creates stunning effects
- Customized print, customized crystal color mix and tailor-made motifs for truly unique results
- Different carrier materials and sizes from PP 14 to PP 22 available
- 200,000 to 300,000 crystals per square meter

**MOUNTING INSTRUCTION**



- ① Crystal Rocks (front layer)
- ② Carrier material (middle layer)
- ③ Self adhesive foil, e.g. 3M 300LSE (back layer)
- ④ Additional mechanical fixing (nails / screws, by costumer)

CRYSTAL COMPOUND

**BACK MATERIAL**

Aluminium, Float Mirror, Optiwhite ESG, Float Glass

**STRUCTURE**

Closed structure

**FRONT GLASS TYPE**

Optiwhite ESG / Float Glass

**FRONT GLASS THICKNESS**

4 mm, 5 mm, 6 mm, 8 mm

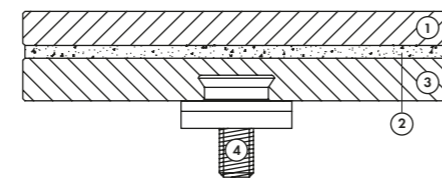
**FIRE CLASSIFICATION**

B1 / Q1

**BENEFITS**

- Hygienic, easy to clean glass surface with closed structure that makes it suitable for wet environments
- Uncompromised finish with customized cutting, color, print, and size options
- Different back layer materials

**MOUNTING INSTRUCTION**



- ① Front Glass (front layer)
- ② Crystal Rocks (middles layer)
- ③ Back Glass (back layer)
- ④ ESG-Glass Anchor (Fischerwerke GmbH & Co. KG)

CRYSTAL GRID  
SOFT SURFACE

**BACK MATERIAL**

Alcantara® Interior Program

**STRUCTURE**

Open structure

**BENEFITS**

- Large variety of options regarding color, motif, and size
- Asymmetrical crystal pattern creates stunning effects
- Eco-friendly materials that allow for easy dismounting

CRYSTAL GRID  
HARD SURFACE

**BACK MATERIAL**

Aluminium, MDF, Corian

**STRUCTURE**

Open structure

**BENEFITS**

- Large variety of options regarding material, color, motif, and size
- Different back layer materials
- Asymmetrical crystal pattern creates stunning effects
- Eco-friendly materials that allow for easy dismounting

CRYSTAL GRID  
COMPOUND SURFACE

**BACK MATERIAL**

Aluminium, Optiwhite ESG, Float Mirror, Float Glass

**STRUCTURE**

Open structure

**FRONT GLASS TYPE**

Optiwhite ESG / Float Glass

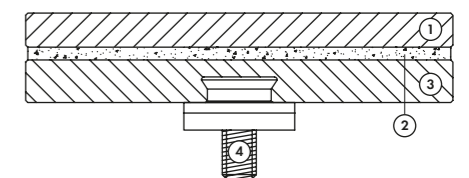
**FRONT GLASS THICKNESS**

4 mm, 5 mm, 6 mm, 8 mm

**BENEFITS**

- Large variety of options regarding material, color, motif, and size
- Compound surface has a hygienic, easy to clean glass surface with a closed structure that makes it suitable for wet environments
- Different back layer materials
- Asymmetrical crystal pattern creates stunning effects
- Eco-friendly materials that allow for easy dismounting

**MOUNTING INSTRUCTION**



- ① Front Glass (front layer)
- ② Crystal Rocks (middles layer)
- ③ Back Glass (back layer)
- ④ ESG-Glass Anchor (Fischerwerke GmbH & Co. KG)

Additional information on Crystal Surfaces

CLASSIC PANEL

**GLASS PANE TYPES**

- Optiwhite: special white glass = transparent glass
- Stopsol: float glass, coated glass for depth effect = transparent glass
- Mirror: float mirror, colored mirror in grey, green, blue = non-transparent glass
- Frosted mirror: satined mirror – also in grey, green, blue available = semi-transparent glass
- Colored glass: float glass grey, green, blue = semi-transparent glass
- Safety composite: safety glass from e.g. Optiwhite and Stopsol, laminated (for overhead security)
- ESG-execution: single-pane safety glass (tempered glass pane)

**CONSTRUCTION OPTIONS**

- Open surface transparent: transparent glass pane with crystal application
- Closed surface transparent: transparent glass pane with crystal application – spacer – transparent glass pane
- Non-transparent: transparent glass pane with crystal application – spacer – mirror or satined mirror or metal plate (lacquered)
- Semi-transparent: transparent glass pane with crystal application – spacer – floatglass grey, green, blue, or satined glass
- Semi-transparent: floatglass grey, green, blue with crystal application – spacer – floatglass grey, green, blue

**ILLUMINATION**

Non-illuminated or LED effect illumination (backlit) or lateral LED illumination

**RECOMMENDED DEPTH OF INSERTION / SUPPORTING AREA**

Dependent on panel size

HEXAGON PANEL

**FRONT GLASS TYPE**

ESG Optiwhite

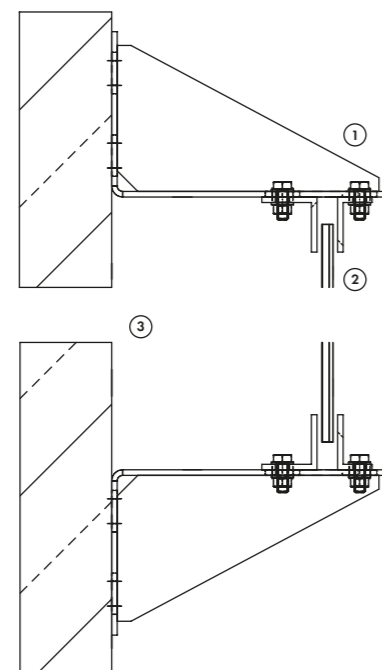
**FRONT GLASS THICKNESS**

6 mm, 8 mm, 10 mm

**BENEFITS**

- Customized scaling solutions
- High brilliance
- Different lacquering options
- Hygienic, easy to clean glass surface that makes it suitable for F&B environments

**MOUNTING INSTRUCTION**



- ① Substructure
- ② Hexagon Wall
- ③ Wall

CLEANING INSTRUCTIONS  
CRYSTAL SURFACES

**OPEN SURFACE CLEANING**

A light layer of dust is most easily removed with a clean, dry, antistatic cloth. It is best to also wear white cotton gloves, so as to avoid unsightly fingerprints. For heavier dirt, lukewarm water with a little dishwashing detergent will suffice. Ideally you should use a clean microfiber or thin, lint-free cotton cloth that has been wrung out as much as possible. Gently wipe each individual crystal and dry them with a clean cloth. It is best to wear white cotton gloves here as well. Please ensure that when cleaning with moisture, only cleaning agents that do not damage the surrounding material are used. By correctly cleaning them, you will restore the full reflectivity of your Swarovski crystals.

**CLOSED SURFACE CLEANING**

When cleaning glass you should always use as much clean water as possible so that you avoid the smearing effect caused by dirt. You can use soft and clean sponges, cloths, leather, or a rubber wiper. Using neutral cleaning agents or commercial household glass cleaners can enhance the result. Stubborn grease stains and sealant residue can be removed using commercial solvents such as ethyl alcohol or isopropanol. Of all the chemical cleaning agents available, you should not use alkaline solutions, acids, or agents that contain fluoride. Using sharp or pointed metal objects such as blades and knives can cause surface damage (scratches). Cleaning agents should not cause visible damage to the surface. The cleaning of glass surfaces by using a glass scraper is not permitted.

PHOTO CREDITS

- p. 9 Rockefeller Star: © Joe Vericker / PhotoBureau
- pp. 9, 12 Versailles “Gabriel” Chandelier: © Studio Bouroullec
- pp. 20, 21 Daniels Kristallwelten. Café & Restaurant: © Foto Stanger
- p. 27 Philmi Yacht: © Christian Meischl
- pp. 16, 17 Crystal Surfaces: © Robert Striegl
- pp. 19, 25, 26, 31, 33, 37, 38, 39, 40, 42, 43, 53 Crystal Surfaces: © Foto Stanger
- pp. 22, 23, 28, 29, 34, 35, 44, 45, 56, 57 Illustrations: © March Gut Industrial Design OG, www.marchgut.com
- pp. 18, 24, 30, 36, 41, 52 Panels on natural surfaces: © Florian Raidt + Sebastian Lager, Sergej Benedetter
- p. 54 Swarovski Baselworld Booth: © Andreas Graber Photography
- p. 55 Swarovski Kristallwelten Bar: © Foto Stanger
- pp. 70, 71 Swarovski Crystal designed by Derek McLane for the 2016 Oscars
- pp. 74, 75 Hyatt Regency: © Jan Kuzel
- pp. 76, 77 Eisprinzessin and Kristallkönigin: © Johannes Weiss
- pp. 78, 79 Presidential Suite, Rosewood Hotel: © Jan Kuzel
- pp. 80, 81 Nationalpark Hohe Tauern, Mittersill, Austria: © Gregor Titze Photography
- pp. 82, 83 Aspen by Kempinski: © Toufic Amaran @ amaranstudio
- pp. 84, 85 BASF Feierabendhaus: © Roland Halbe

For further information please contact [sp.interiorsolutions@swarovski.com](mailto:sp.interiorsolutions@swarovski.com)

[SWAROVSKI.COM/PROFESSIONAL](http://SWAROVSKI.COM/PROFESSIONAL)

Valid from April 2016

Content is subject to change without notice.

Errors and misprints excepted.

D. Swarovski Distribution GmbH, Swarovskistrasse 30, 6112 Wattens, Austria

© 2016 D. Swarovski Distribution GmbH. All rights reserved. Partial or total publication, transmission, copy or other duplication of texts, graphics, pictures etc. which are to be found in this publication is forbidden without special consent by D. Swarovski Distribution GmbH. Swarovski® is a registered trademark of Swarovski AG .

[SWAROVSKI.COM/PROFESSIONAL](http://SWAROVSKI.COM/PROFESSIONAL)

Sys.No. 5261654