

TIME TO SHINE

CELEBRATE CRYSTAL
IN ALL OF ITS FACETS

INNOVATIONS AND INSPIRATIONS
SPRING/SUMMER 2021



SWAROVSKI

NEW CRYSTAL ELEMENTS

Round Stones



1400 Dome Round Stone
10, 12, 14, 18 mm



90 101 Blazing Ball
9x6.5, 20x6.5 mm

Pendants



6433 Pear Cut Pendant
9, 11.5, 16 mm

Fancy Stones & Settings



4162 Elongated Oval Fancy Stone
10x5.5, 14x7.5, 18x9.5 mm



90 102 Carly Carrot
16.5x8, 26.5x8 mm

Flat Backs No Hotfix



2774 Elongated Pentagon Flat Back
6.3x4.2, 8.3x5.6, 12.5x8.4 mm



4460 Mystic Square Fancy Stone
8, 10, 14, 18 mm



90 105 Freddy Fish
17x7, 28x7 mm



2775 Concise Pentagon Flat Back
5x4.2, 6.7x5.6, 10x8.4 mm

BeCharmed & Pavé



86 401 Pavé Cube
8, 9 mm



90 107 Louey Lollipop
19.5x8, 30x8 mm



2776 Elongated Hexagon Flat Back
8.2x4.2, 11x5.6, 16.5x8.4 mm

Cutie Cutes Family



90 001 Bubbly Bunny
15x8, 22.5x8 mm



90 108 Lizzy Luna
14x11, 25x11 mm



2777 Concise Hexagon Flat Back
5x4.2, 6.7x5.6, 10x8.4 mm



90 002 Parky Penguin
16x10.5, 27x10x5 mm



90 109 Bella Butterfly
9x8, 20x8 mm

Flat Backs Hotfix



2774 Elongated Pentagon Flat Back
6.3x4.2, 8.3x5.6, 12.5x8.4 mm



90 003 Kitty Kat
11x8, 21.5x8 mm



90 110 Huggy Heart
10.5x8, 21x8 mm



2775 Concise Pentagon Flat Back
5x4.2, 6.7x5.6, 10x8.4 mm



90 004 Uni Unicorn
15x8, 22.5x8 mm



90 111 Candy Clover
11x7.5, 21.5x7.5 mm



2776 Elongated Hexagon Flat Back
8.2x4.2, 11x5.6, 16.5x8.4 mm



90 112 Sassy Star
9.5x8, 20.5x8 mm



2777 Concise Hexagon Flat Back
5x4.2, 6.7x5.6, 10x8.4 mm



90 113 Polly Paw
9x10.5, 19x10.5 mm

NEW FORWARD-INTEGRATED ELEMENTS

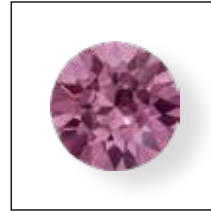
Synthetics

- Synthetics Extra Small (XS)**
 Crystal Fine Rocks XS
 Crystal Ultrafine Rocks XS
 Graphic Fine Rocks XS
 Graphic Ultrafine Rocks XS

- Synthetics Unlimited (UL)**
 Crystal Fabric UL
 Crystal Medley UL
 Crystal Fine Medley UL
 Crystal Galuchat UL

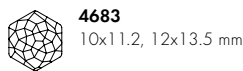
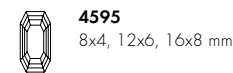
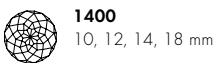
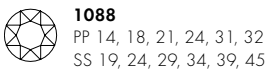
NEW COLOR: IRIS

Paler than Amethyst, yet boasting more intensity than Light Amethyst, Iris is a soft and elegant purple shade that meets the demand for modern opulence. As an exemplar of the new-luxe look, Iris is ideal for color-rich spring floral designs, as well as striking dégradé effects when teamed with the Amethyst palette.



Iris (219)

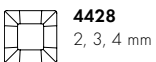
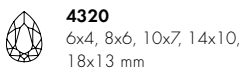
Round Stones



Pendants



Fancy Stones & Settings



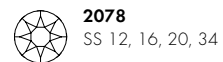
Beads



Flat Backs No Hotfix

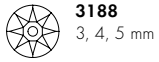


Flat Backs Hotfix



¹ 3 & 4 mm also available in AB & AB 2x; 5 & 6 mm also available in AB

Sew-on Articles



3188
3, 4, 5 mm



3200
10, 12, 14 mm

Transfers



2038
SS 6, 8, 10



2078
SS 12, 16, 20, 34

Flat Back Bandings



55 000, 55 001
SS 20



55 300, 55 301
SS 16



55 500, 55 501
SS 12

Rivets



53 001, 53 005, 53 006
SS 29, 34, 39

Flat Back Rivets



56 101
SS 16



56 102
SS 20



56 103
SS 34

Rose Montées



53 100, 53 102, 53 103
SS 12, 16, 30

Rose Pins



53 301
SS 10



53 302
SS 16



53 303
SS 20



53 304
SS 34

3D Studs



54 001
4 mm SS 16



54 002
6 mm SS 16



54 003
8 mm SS 16

Crystal Mesh



40 000, 40 001
PP 21



40 600, 40 601
PP 9

NEW EFFECT: IGNITE

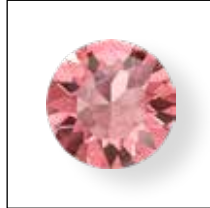
Ignite Effect is unfoiled, yet it maintains an intensity of sparkle. Indeed, no other unfoiled crystal on the market can boast this level of brilliance. It's what makes it so incredibly versatile, enabling open-back settings and offering new ways to imitate fine jewelry looks.



**Crystal Ignite
(001 IGNIT)**



**Aquamarine Ignite
(202 IGNIT)**



**Light Rose Ignite
(223 IGNIT)**

Round Stones



1088
PP 24, 31
SS 24, 29, 39

Fancy Stones & Settings



4120
6x4, 8x6, 14x10, 18x13 mm



4228
6x3, 8x4, 10x5, 15x7 mm



4320
6x4, 8x6, 10x7, 14x10,
18x13 mm



4470
8, 10, 12, 18 mm

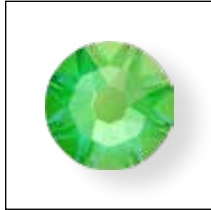
NEW EFFECTS: CRYSTAL ELECTRIC LACQUER^{PRO} DELITE EFFECTS

A sensational marriage of the radiant DeLite with the high voltage Electric Lacquer^{PRO} has delivered a neon-bright crystal with premium sparkle. Seven **Electric Lacquer^{PRO}**

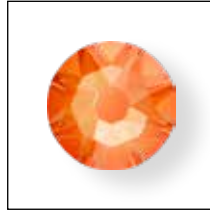
DeLite effects open up an astonishing range of creative possibilities, especially for segments that demand powerful, standout looks, such as dance costumes.



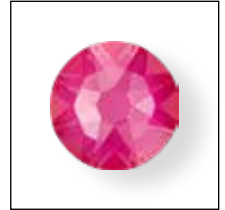
Crystal Electric Blue DeLite (001 L134D)



Crystal Electric Green DeLite (001 L135D)



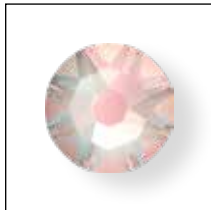
Crystal Electric Orange DeLite (001 L136D)



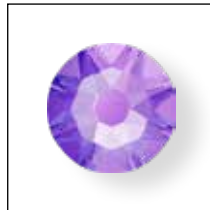
Crystal Electric Pink DeLite (001 L137D)



Crystal Electric Yellow DeLite (001 L138D)

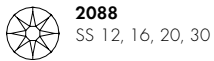


Crystal Electric White DeLite (001 L139D)*

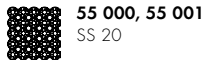


Crystal Electric Violet DeLite (001 L148D)

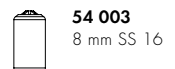
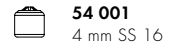
Flat Backs No Hotfix



Flat Back Bandings



3D Studs



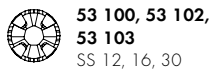
Flat Backs Hotfix



Rose Pins



Rose Montées



Transfers



Flat Back Rivets



* Crystal Electric White DeLite (001 L139D) is not available for Rose Pins.

DO YOU KNOW THE DIFFERENCE?

Crystal Electric Lacquer^{PRO} DeLite effects

Launch February 2020



Crystal Electric White DeLite Crystal Electric Orange DeLite Crystal Electric Pink DeLite Crystal Electric Violet DeLite Crystal Electric Blue DeLite Crystal Electric Green DeLite Crystal Electric Yellow DeLite

Crystal Electric Blue DeLite (001 L134D)



DeLite Effect + Electric (Neon) Lacquer on CRYSTAL (001)

Crystal Electric Lacquer^{PRO} effects

Launches February 2019, September 2019



Crystal Electric White Crystal Electric Orange Crystal Electric Pink Crystal Electric Violet Crystal Electric Blue Crystal Electric Green Crystal Electric Yellow

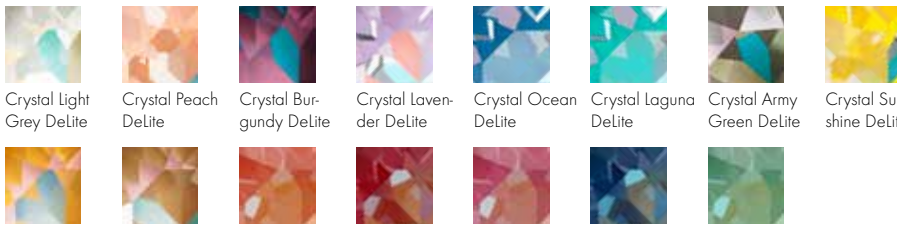
Crystal Electric Blue (001 L134S)



Shiny Effect + Electric (Neon) Lacquer on CRYSTAL (001)

Crystal Lacquer^{PRO} DeLite effects

Launches September 2018, February 2019, September 2019



Crystal Light Grey DeLite Crystal Peach DeLite Crystal Burgundy DeLite Crystal Lavender DeLite Crystal Ocean DeLite Crystal Laguna DeLite Crystal Army Green DeLite Crystal Sunshine DeLite
Crystal Ochre DeLite Crystal Cappuccino DeLite Crystal Orange Glow DeLite Crystal Royal Red DeLite Crystal Lotus Pink DeLite Crystal Royal Blue DeLite Crystal Silky Sage DeLite

Crystal Ocean DeLite (001 L143D)



DeLite Effect + Lacquer on CRYSTAL (001)

Crystal Shiny Lacquer^{PRO} effects

Launches September 2016, February 2017, February 2018



Crystal Ivory Cream Crystal Light Coral Crystal Royal Red Crystal Peony Pink Crystal Dark Red Crystal Lilac Crystal Summer Blue
Crystal Royal Blue Crystal Azure Blue Crystal Mint Green Crystal Royal Green Crystal Lime Crystal Buttercup Crystal Dark Grey

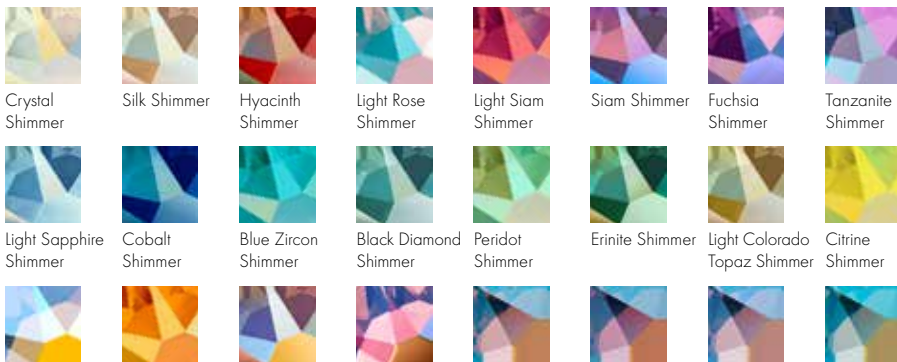
Crystal Royal Blue (001 L110S)



Shiny Effect + Lacquer on CRYSTAL (001)

Shimmer effects

Launches February 2017, September 2017, February 2018 and ongoing Line Extension



Crystal Shimmer Silk Shimmer Hyacinth Shimmer Light Rose Shimmer Light Siam Shimmer Siam Shimmer Fuchsia Shimmer Tanzanite Shimmer
Light Sapphire Shimmer Cobalt Shimmer Blue Zircon Shimmer Black Diamond Shimmer Peridot Shimmer Erinite Shimmer Light Colorado Topaz Shimmer Citrine Shimmer
Light Topaz Shimmer Tangerine Shimmer Topaz Shimmer Rose Peach Shimmer Rose Shimmer Amethyst Shimmer Light Amethyst Shimmer Aquamarine Shimmer

Light Sapphire Shimmer (211 SHIM)



Shimmer Effect on CRYSTAL (001) OR Crystal Color

CORE ASSORTMENT

NEW COLOR



Light Rose
(223)

EXISTING COLORS



Crystal
(001)



Light Colorado
Topaz (246)



Scarlet
(276)



Amethyst
(204)



Aquamarine
(202)



Emerald
(205)



Jet (280)

Round Stones



1028
PP 2, 3, 4, 5, 6, 7, 8, 9,
10, 11, 12, 13



1088
PP 14, 15, 16, 17, 18, 19,
20, 21, 22, 23, 24, 25, 26,
27, 28, 29, 30, 31, 32
SS 18, 19, 20, 21, 22, 24,
26, 28, 29, 30, 34, 35,
38, 39



1122
SS 29, 34, 39, 47
12, 14 mm

Pendants



6010
11x5.5, 13x6.5,
17x8.5 mm



6106
16, 22, 28 mm



6228
10.3x10, 14.4x14,
18x17.5 mm



6428
6, 8, 12 mm



2200
8x4 mm



2300
8x4.8 mm



2400
3, 4 mm

Sew-on Articles



3188
3, 4, 5 mm



3200
10, 12, 14 mm



3230
12x7, 18x10.5,
28x17 mm



3288
8, 10, 12 mm

Fancy Stones & Settings



4120
6x4, 8x6, 14x10,
18x13 mm



4228
4x2, 5x2.5, 6x3, 8x4,
10x5, 15x7 mm



4320
6x4, 8x6, 10x7, 14x10,
18x13 mm



4428
1.5, 2, 3, 4, 5, 6, 8 mm



4470
10, 12 mm



4501¹
4x2, 5x2, 5x2.5,
7x3 mm

Beads



5000
2, 3, 4, 5, 6, 7,
8, 10 mm



5040
4, 6, 8 mm



5328
2.5, 3, 4, 5, 6, 8 mm

Flat Backs No Hotfix



2058
SS 5, 6, 7, 8, 9, 10



2088
SS 12, 14, 16, 20,
30, 34



2200
8x4 mm



2300
8x4.8, 10x6 mm



2400
3, 4, 6 mm

Flat Backs for Transfers



2038
SS 5, 6, 8, 10



2078
SS 12, 16, 20, 30, 34



2200
8x4 mm



2300
8x4.8 mm



2400
3, 4 mm

Flat Backs Hotfix



2038
SS 5, 6, 8, 10



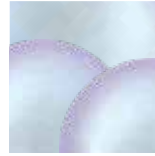
2078
SS 12, 16, 20, 30, 34

¹ Article 4501 in Light Rose is already part of the standard assortment; for further details please refer to the Collection 2018 chapter 'Fancy Stones'.

² Due to technical limitation the color Scarlet (276) is not available in the size 2mm for art 5000.

CRYSTAL IRIDESCENT DREAMY ROSE PEARL & CRYSTAL IRIDESCENT DREAMY BLUE PEARL

The new Pearl Colors, **Dreamy Rose Pearl** and **Dreamy Blue Pearl**, have a soft iridescence that combines beautifully with the existing natural Pearl palette, as well as with the new Iris shade and Opal Shimmer effects. Use them to create a fashionable unicorn look, or to inject a refreshing radiance into daytime designs.



Crystal Iridescent
Dreamy Blue Pearl
(001 2026)



Crystal Iridescent
Dreamy Rose Pearl
(001 2025)

Crystal Pearls



5810
2, 3, 4, 5, 6, 8, 10, 12 mm



5818
6, 8, 10 mm



5860
10, 12 mm



5817
6, 8 mm



5824
4 mm

LINE EXTENSIONS

**New Sizes for
4480 Imperial Fancy Stone**

14, 18 mm

**New Color for
4480 Imperial Fancy Stone in
6, 8, 10, 14 mm**

Majestic Blue (296)

**Three Shimmer Effects
(Crystal Shimmer, Amethyst
Shimmer and Aqua Shimmer)
available for Gem Cut
Pendants and Classic Pendants**

- 6106** 16, 22 mm
- 6228** 10.3x10, 14.4x14, 18x17.5 mm
- 6428** 6, 8 mm
- 6430** 8, 10, 14 mm
- 6431** 9, 11.5, 16 mm
- 6432** 8, 10.5, 14.5 mm

**New Opal Shimmer Effect for
Beads**

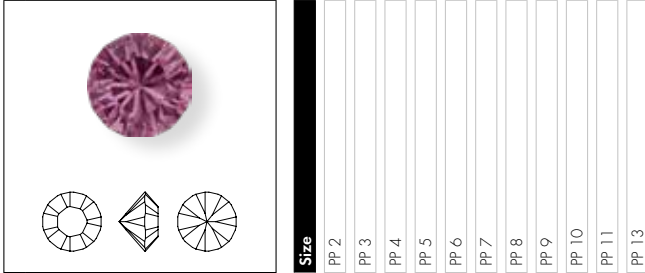
- 5000** 4, 6, 8 mm
- 5328** 3, 4, 5, 6 mm

PRODUCT DETAILS	
PAGE 67	ROUND STONES
PAGE 69	FANCY STONES & SETTINGS
PAGE 75	BEADS
PAGE 77	BECHARMED & PAVE
PAGE 81	CRYSTAL PEARLS
PAGE 82	PENDANTS
PAGE 85	FLAT BACK NO HOTFIX
PAGE 88	FLAT BACK HOTFIX
PAGE 93	SEW-ON ARTICLES
PAGE 97	TRANSFERS
PAGE 103	SYNTHETICS
PAGE 130	METAL TRIMMINGS
PAGE 138	CRYSTAL MESH
PAGE 140	CRYSTAL INSPIRATION COLLECTION
PAGE 157	WHY SWAROVSKI
PAGE 158	SUSTAINABILITY

ROUND STONES

CORE ASSORTMENT

1028 XILLION Chaton



Size
PP 2
PP 3
PP 4
PP 5
PP 6
PP 7
PP 8
PP 9
PP 10
PP 11
PP 13

Colors

Plain Colors

Color	NEW!
Iris F [219]	■
Light Rose F [223]	◆

CORE ASSORTMENT

1088 XIRIUS Chaton



Size
PP 14
PP 15
PP 16
PP 17
PP 18
PP 19
PP 20
PP 21
PP 22
PP 23
PP 24
PP 25
PP 26
PP 27
PP 28
PP 29
PP 30
PP 31
PP 32

Colors

Plain Colors

Color	NEW!
Iris F [219]	■
Light Rose F [223]	◆

Crystal Effects

Transparent Effects

Effect	NEW!
Crystal Ignite [001 IGNIT]	■

Color Effects

Transparent Effects

Effect	NEW!
Aquamarine Ignite [202 IGNIT]	■
Light Rose Ignite [223 IGNIT]	■

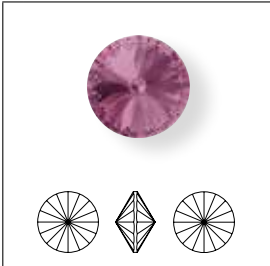
◆ Core Assortment ■ Existing Assortment

CORE ASSORTMENT

1088		Size	SS 18	SS 19	SS 20	SS 21	SS 22	SS 24	SS 26	SS 28	SS 29	SS 30	SS 34	SS 35	SS 38	SS 39	SS 45
		NEW!															
Colors																	
Plain Colors																	
Iris F (219)		NEW!															
Light Rose F (223)			◆	◆	◆	◆	◆	◆	◆	◆	◆	◆	◆	◆	◆	◆	◆
Crystal Effects																	
Transparent Effects																	
Crystal Ignite (001 GNIT)		NEW!						■			■					■	
Color Effects																	
Transparent Effects																	
Aquamarine Ignite (202 GNIT)		NEW!							■		■						■
Light Rose Ignite (223 GNIT)		NEW!															■

CORE ASSORTMENT

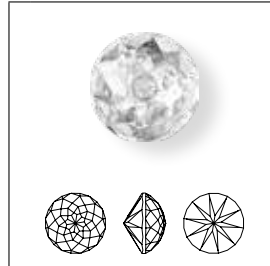
1122 Rivoli

		Size	SS 29	SS 34	SS 39	SS 47	12 mm	14 mm	18 mm
		NEW!							
Colors									
Plain Colors									
Iris F (219)		NEW!							
Light Rose F (223)			◆	◆	◆	◆	◆	◆	◆

*Any oral, written, or test-based advice as well as the overview of selected suppliers provided by Swarovski herein are recommendations based on Swarovski's current knowledge and the information provided by the selected suppliers. Such advice does not discharge the customer from carrying out its own tests and evaluating the suitability of the selected supplier. The decision regarding which supplier is selected and whether the products are suitable for their intended use is solely the customer's responsibility.

◆ Core Assortment ◆ Existing Assortment

1400 Dome Round Stone ^{NEW!}

		Size	10 mm	12 mm	14 mm	18 mm
		NEW!				
Crystal						
Crystal F (001)			■	■	■	■
Colors						
Plain Colors						
Amethyst F (204)			■	■		
Aquamarine F (202)			■	■	■	■
Emerald F (205)			■	■	■	■
Iris F (219)		NEW!	■	■	■	■
Jet (280)			■	■	■	■
Light Colorado Topaz F (246)			■	■	■	■
Scarlet F (276)			■	■	■	■
Opal Colors						
White Opal F (234)			■	■	■	■
Crystal Effects						
Transparent Effects						
Crystal AB F (001 AB)			■	■	■	■
Crystal Bermuda Blue F (001 BBL)			■	■	■	■
Crystal Paradise Shine F (001 PARSH)			■	■	■	■

 Selected suppliers for Glue-in Settings*: Josef Berghs GmbH & Co. KG, www.josefberghs.com

FANCY STONES & SETTINGS

CORE ASSORTMENT

4120 Oval Fancy Stone



Size	6x4 mm	8x6 mm	14x10 mm	18x13 mm
------	--------	--------	----------	----------

Colors

Plain Colors

Iris F (219)	NEW!	■	■	■
Light Rose F (223)		◆	◆	◆

Crystal Effects

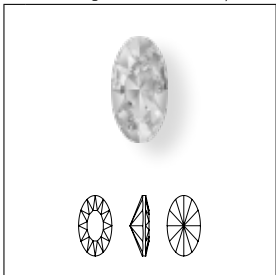
Crystal Ignite (001 IGNIT)	NEW!	■	■	■
----------------------------	------	---	---	---

Color Effects

Aquamarine Ignite (202 IGNIT)	NEW!	■	■	■
Light Rose Ignite (223 IGNIT)	NEW!	■	■	■

4162 Elongated Oval Fancy Stone

NEW!



Size	10x5.5 mm	14x7.5 mm	18x9.5 mm
------	-----------	-----------	-----------

Crystal

Crystal F (001)	■	■	■
-----------------	---	---	---

Colors

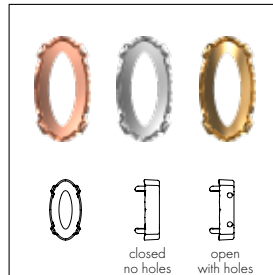
Amethyst F (204)	■	■	■
Aquamarine F (202)	■	■	■
Emerald F (205)	■	■	■
Iris F (219)	NEW!	■	■
Jet (280)	■	■	■
Light Colorado Topaz F (246)	■	■	■
Majestic Blue F (296)	■	■	■
Montana F (207)	■	■	■
Scarlet F (276)	■	■	■
Vintage Rose F (319)	■	■	■

Crystal Effects

Crystal AB F (001 AB)	■	■	■
Crystal Golden Shadow F (001 GSHA)	■	■	■
Crystal Silver Shade F (001 SSHA)	■	■	■

4162/S

NEW!



Size & color of plating	10x5.5 mm No plating	14x7.5 mm No plating	18x9.5 mm No plating	10x5.5 mm Rhodium	14x7.5 mm Rhodium	18x9.5 mm Rhodium	10x5.5 mm Gold	14x7.5 mm Gold	18x9.5 mm Gold
-------------------------	----------------------	----------------------	----------------------	-------------------	-------------------	-------------------	----------------	----------------	----------------

Ring/Hole, Back Configuration

00 C = No ring, no hole, closed	■	■	■	■	■	■	■	■	■
H2 O = Holes for sewing, open	■	■	■	■	■	■	■	■	■

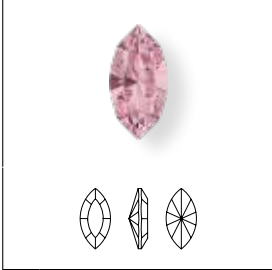


Selected suppliers for Glue-in Settings*:
Josef Bergs GmbH & Co. KG, www.josefbergs.com

*Any oral, written, or test-based advice as well as the overview of selected suppliers provided by Swarovski herein are recommendations based on Swarovski's current knowledge and the information provided by the selected suppliers. Such advice does not discharge the customer from carrying out its own tests and evaluating the suitability of the selected supplier. The decision regarding which supplier is selected and whether the products are suitable for their intended use is solely the customer's responsibility.

◆ Core Assortment ◆ Existing Assortment

4228 XILION Navette Fancy Stone



Size 4x2, 5x2.5 mm

4228 XILION Navette Fancy Stone



Size 6x3, 8x4, 10x5, 15x7 mm

CORE ASSORTMENT

4228	Size	4x2 mm	5x2.5 mm	6x3 mm	8x4 mm	10x5 mm	15x7 mm	
	Colors							
	Plain Colors							
	NEW!	Iris F (219)	NEW!	NEW!	NEW!	NEW!	NEW!	NEW!
	NEW!	Light Rose F (223)	NEW!	NEW!	NEW!	NEW!	NEW!	NEW!
	Crystal Effects							
Transparent Effects								
NEW!	Crystal Ignite (001 GNIT)	NEW!	NEW!	NEW!	NEW!	NEW!	NEW!	
Color Effects								
Transparent Effects								
NEW!	Aquamarine Ignite (202 GNIT)	NEW!	NEW!	NEW!	NEW!	NEW!	NEW!	
NEW!	Light Rose Ignite (223 GNIT)	NEW!	NEW!	NEW!	NEW!	NEW!	NEW!	

CORE ASSORTMENT

4320 Pear Fancy Stone

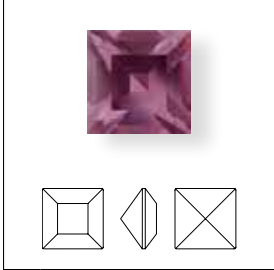


Size	6x4 mm	8x6 mm	10x7 mm	14x10 mm	18x13 mm
-------------	--------	--------	---------	----------	----------

Colors					
Plain Colors					
NEW!	Iris F (219)	NEW!	NEW!	NEW!	NEW!
NEW!	Light Rose F (223)	NEW!	NEW!	NEW!	NEW!
Crystal Effects					
Transparent Effects					
NEW!	Crystal Ignite (001 GNIT)	NEW!	NEW!	NEW!	NEW!
Color Effects					
Transparent Effects					
NEW!	Aquamarine Ignite (202 GNIT)	NEW!	NEW!	NEW!	NEW!
NEW!	Light Rose Ignite (223 GNIT)	NEW!	NEW!	NEW!	NEW!

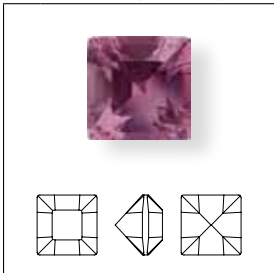
◆ Core Assortment ◆ Existing Assortment

4428 XILION Square Fancy Stone



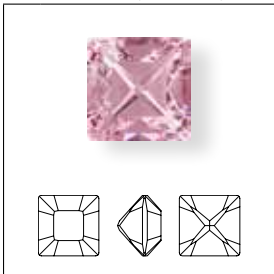
Size 1.5, 2 mm

4428 XILION Square Fancy Stone



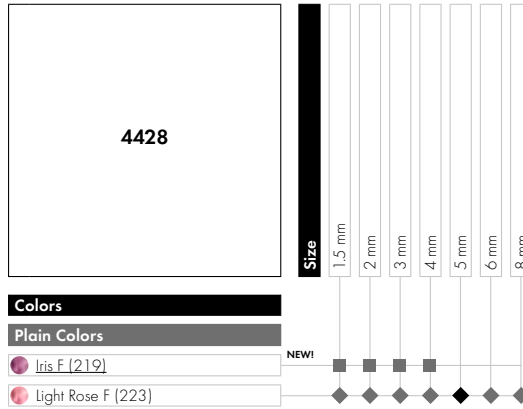
Size 3, 4 mm

4428 XILION Square Fancy Stone



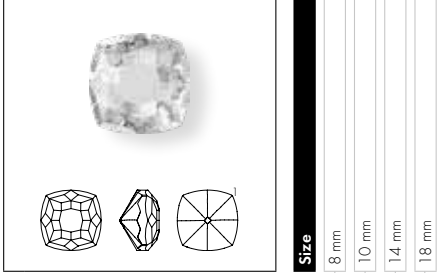
Size 5, 6, 8 mm

CORE ASSORTMENT



◆ Core Assortment ◆ Existing Assortment

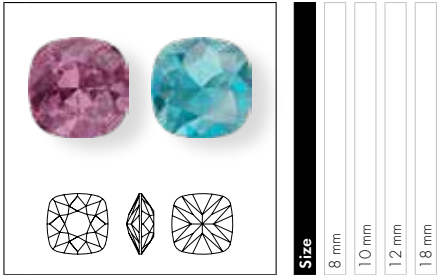
4460 Mystic Square Fancy Stone ^{NEW!}



	8 mm	10 mm	14 mm	18 mm
Crystal				
Crystal F (001)	■	■	■	■
Colors				
Plain Colors				
Amethyst F (204)	■	■	■	■
Aquamarine F (202)	■	■	■	■
Emerald F (205)	■	■	■	■
^{NEW!} Iris F (219)	■	■	■	■
Light Colorado Topaz F (246)	■	■	■	■
Scarlet F (276)	■	■	■	■
Crystal Effects				
Transparent Effects				
Crystal AB F (001 AB)	■	■	■	■
Crystal Astral Pink F (001 API)	■	■	■	■
Crystal Luminous Green F (001 LUMG)	■	■	■	■
Crystal Paradise Shine F (001 PARSH)	■	■	■	■
Crystal Vitrail Medium F (001 VM)	■	■	■	■
Color Effects				
Transparent Effects				
Light Topaz Shimmer F (226 SHIM)	■	■	■	■

CORE ASSORTMENT

4470 Cushion Square Fancy Stone

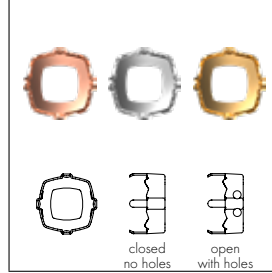


	8 mm	10 mm	12 mm	18 mm
Colors				
Plain Colors				
^{NEW!} Iris F (219)	■	■	■	■
Light Rose F (223)	■	◆	◆	■
Crystal Effects				
Transparent Effects				
^{NEW!} Crystal Ignite (001 IGNIT)	■	■	■	■

◆ Core Assortment

◆ 1 grooved reverse side

4460/S ^{NEW!}

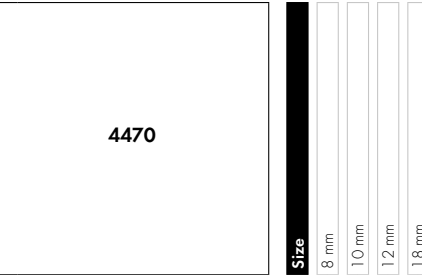


	8 mm	10 mm	14 mm	18 mm
Size & color of plating				
8 mm No plating	■	■	■	■
10 mm No plating	■	■	■	■
14 mm No plating	■	■	■	■
18 mm No plating	■	■	■	■
8 mm Rhodium	■	■	■	■
10 mm Rhodium	■	■	■	■
14 mm Rhodium	■	■	■	■
18 mm Rhodium	■	■	■	■
8 mm Gold	■	■	■	■
10 mm Gold	■	■	■	■
14 mm Gold	■	■	■	■
18 mm Gold	■	■	■	■

	8 mm	10 mm	14 mm	18 mm
Ring/Hole, Back Configuration				
00 C = No ring, no hole, closed	■	■	■	■
H2 O = Holes for sewing, open	■	■	■	■

Selected suppliers for Glue-in Settings*:
Josef Bergs GmbH & Co. KG, www.josefbergs.com

*Any oral, written, or test-based advice as well as the overview of selected suppliers provided by Swarovski herein are recommendations based on Swarovski's current knowledge and the information provided by the selected suppliers. Such advice does not discharge the customer from carrying out its own tests and evaluating the suitability of the selected supplier. The decision regarding which supplier is selected and whether the products are suitable for their intended use is solely the customer's responsibility.



	8 mm	10 mm	12 mm	18 mm
Color Effects				
Transparent Effects				
^{NEW!} Aquamarine Ignite (202 IGNIT)	■	■	■	■
^{NEW!} Light Rose Ignite (223 IGNIT)	■	■	■	■

4480 Imperial Fancy Stone



Size	6 mm	8 mm	10 mm	14 mm	18 mm
				NEW!	NEW!

Crystal

Crystal F (001)					
-----------------	--	--	--	--	--

Colors

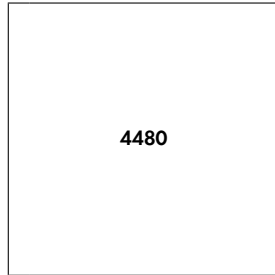
Plain Colors

Amethyst F (204)					
Aquamarine F (202)					
Emerald F (205)					
Iris F (219)	NEW!				
Jet (280)					
Light Colorado Topaz F (246)					
Light Rose F (223)					
Majestic Blue F (296)		NEW!	NEW!		
Montana F (207)					
Scarlet F (276)					

Crystal Effects

Transparent Effects

Crystal AB F (001 AB)					
Crystal Golden Shadow F (001 GSHA)					
Crystal Silver Night (001 SINI)					
Crystal Silver Shade F (001 SSHA)					



Size	6 mm	8 mm	10 mm	14 mm	18 mm

Metallic Effects

Crystal Metallic Light Gold F (001 MIGLD)					
---	--	--	--	--	--

Crystal Lacquer^{PRO} Effects

Crystal Lacquer^{PRO} DeLite Effects

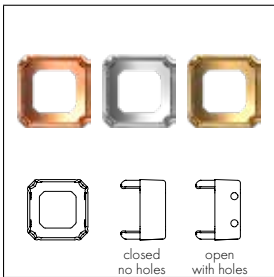
Crystal Army Green DeLite (001 L130D)					
Crystal Burgundy DeLite (001 L132D)					
Crystal Cappuccino DeLite (001 L133D)					
Crystal Light Grey DeLite (001 L129D)					
Crystal Ochre DeLite (001 L131D)					

Color Effects

Metallic Effects

Jet Hematite (280 HEM)					
------------------------	--	--	--	--	--

4480/S



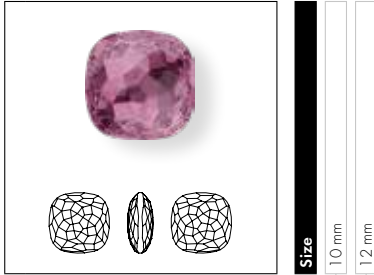
Size & color of plating	6 mm	8 mm	10 mm	14 mm	18 mm	6 mm	8 mm	10 mm	14 mm	18 mm	6 mm	8 mm	10 mm	14 mm	18 mm
No plating															
Rhodium															
Gold															

Ring/Hole, Back Configuration

00 C = No ring/hole, closed															
H2 O = 4 holes/2 each side, open															

FANTASY FANCY STONE FAMILY

4483 Fantasy Cushion Fancy Stone



Size
10 mm
12 mm

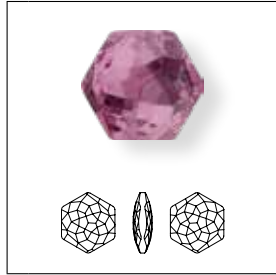
Colors

Plain Colors

● Iris F [219]

NEW!

4683 Fantasy Hexagon Fancy Stone



Size
10x11.2 mm
12x13.5 mm

Colors

Plain Colors

● Iris F [219]

NEW!

4595 Elongated Imperial Fancy Stone



Size
8x4 mm
12x6 mm
16x8 mm

Colors

Plain Colors

● Iris F [219]

NEW!

4706 Trilliant Fancy Stone



Size
7 mm
12 mm

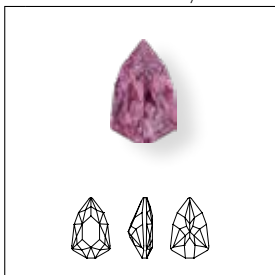
Colors

Plain Colors

● Iris F [219]

NEW!

4707 Slim Trilliant Fancy Stone



Size
7.8x4.9 mm
13.6x8.6 mm

Colors

Plain Colors

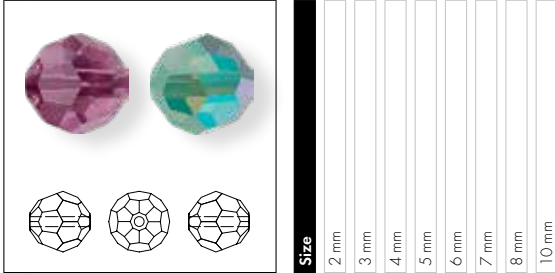
● Iris F [219]

NEW!

BEADS

CORE ASSORTMENT

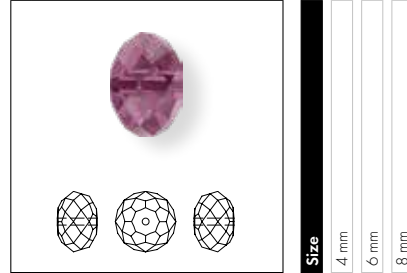
5000 Classic Bead



Colors	2 mm	3 mm	4 mm	5 mm	6 mm	7 mm	8 mm	10 mm
Plain Colors								
NEW! Iris (219)			■	■	■			
Light Rose (223)	◆	◆	◆	◆	◆	◆	◆	◆
Color Effects								
Transparent Effects								
Opal Colors Shimmer Effects								
NEW! Chrysolite Opal Shimmer (294 SHIM)			■	■	■			
NEW! Cyclamen Opal Shimmer (398 SHIM)			■	■	■			
NEW! Pacific Opal Shimmer (390 SHIM)			■	■	■			
NEW! Rose Water Opal Shimmer (395 SHIM)			■	■	■			
NEW! White Opal Shimmer (234 SHIM)			■	■	■			
NEW! Yellow Opal Shimmer (231 SHIM)			■	■	■			

CORE ASSORTMENT

5040 Briolette Bead

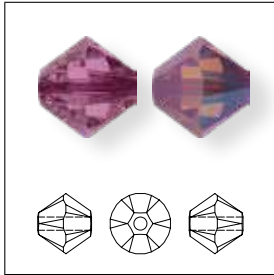


Colors	4 mm	6 mm	8 mm
Plain Colors			
NEW! Iris (219)		■	■
Light Rose (223)	◆	◆	◆

◆ Core Assortment ■ Existing Assortment

CORE ASSORTMENT

5328 XILION Bead



Size	2.5 mm	3 mm	4 mm	5 mm	6 mm	8 mm
------	--------	------	------	------	------	------

Colors

Plain Colors

● Iris (219)

● Light Rose (223)

Color Effects

Transparent Effects

● Iris AB (219 AB)

● Iris AB 2x (219 AB2)

Opal Colors Shimmer Effects

● Chrysolite Opal Shimmer (294 SHIM)

● Chrysolite Opal Shimmer 2x (294 SHIM2)

● Cyclamen Opal Shimmer (398 SHIM)

● Cyclamen Opal Shimmer 2x (398 SHIM2)

● Pacific Opal Shimmer (390 SHIM)

● Pacific Opal Shimmer 2x (390 SHIM2)

● Rose Water Opal Shimmer (395 SHIM)

● Rose Water Opal Shimmer 2x (395 SHIM2)

● White Opal Shimmer (234 SHIM)

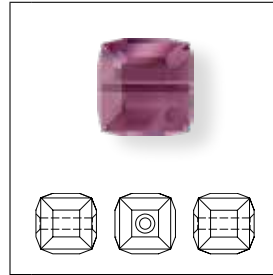
● White Opal Shimmer 2x (234 SHIM2)

● Yellow Opal Shimmer (231 SHIM)

● Yellow Opal Shimmer 2x (231 SHIM2)

NEW!	■	■	■	■	■	■
◆	◆	◆	◆	◆	◆	◆
NEW!	■	■	■	■	■	■
NEW!	■	■	■	■	■	■
NEW!	■	■	■	■	■	■
NEW!	■	■	■	■	■	■
NEW!	■	■	■	■	■	■
NEW!	■	■	■	■	■	■
NEW!	■	■	■	■	■	■
NEW!	■	■	■	■	■	■
NEW!	■	■	■	■	■	■
NEW!	■	■	■	■	■	■
NEW!	■	■	■	■	■	■
NEW!	■	■	■	■	■	■
NEW!	■	■	■	■	■	■
NEW!	■	■	■	■	■	■
NEW!	■	■	■	■	■	■
NEW!	■	■	■	■	■	■
NEW!	■	■	■	■	■	■
NEW!	■	■	■	■	■	■
NEW!	■	■	■	■	■	■

5601 Cube Bead



Size	4 mm	6 mm	8 mm
------	------	------	------

Colors

Plain Colors

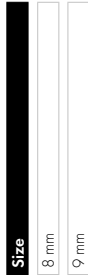
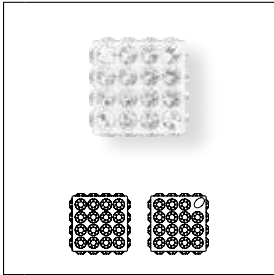
● Iris (219)

NEW!	■	■	■
------	---	---	---

◆ Core Assortment ◆ Existing Assortment

BECHARMED & PAVÉ

86 401 Pavé Cube ^{NEW!}



Crystal

- Crystal (001)
- White (01)

Colors

Plain Colors

- Aquamarine (202)
- Light Blue (11)
- Black Diamond (215)
- Silver (03)
- Jet (280)
- Black (02)
- Light Amethyst (212)
- Mauve (14)
- Light Rose (223)
- Rose (06)
- Majestic Blue (296)
- Dark Blue (15)
- Sapphire (206)
- Dark Blue (15)

Crystal Effects

Transparent Effects

- Crystal AB (001 AB)
- White (01)
- Crystal Golden Shadow (001 GSHA)
- Pearl Silk (05)

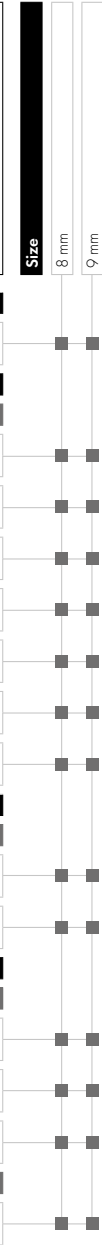
Color Effects

Transparent Effects

- Light Colorado Topaz Shimmer (246 SHIM)
- Antique Gold (35)
- Light Sapphire Shimmer (211 SHIM)
- Cadet Blue (43)
- Light Siam Shimmer (227 SHIM)
- Red 3 (21)

Metallic Effects

- Jet Hematite (280 HEM)
- Black (02)

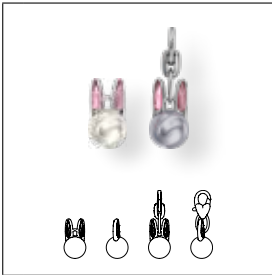


CUTIE CUTES FAMILY

Loveable and enchanting additions to the BeCharmed & Pavé range, **Cutie Cutes** are a playful family of character charms. The assortment features pieces inspired by Japan's Kawaii style, such as Bubbly Bunny, Kitty Kat and Carly Carrot; there are also fashionable motifs, like Uni Unicorn, and universal symbols that

create meaningful narratives in crystal, including Lizzy Luna, Sassy Star, Candy Clover and Huggy Heart. Available with a clasp or without, Cutie Cutes are quick and simple to attach to almost anything.

90 001 Bubbly Bunny ^{NEW!}



Size
1.5x8 mm
22.5x8 mm with Clasp

- Colors**
- Crystal White Pearl (001 650)
 - Blush Rose F (257)
 - Crystal Lavender Pearl (001 524)
 - Blush Rose F (257)

90 002 Perky Penguin ^{NEW!}



Size
1.6x10.5 mm
27x10x5 mm with Clasp

- Colors**
- Crystal White Pearl (001 650)
 - Jet Hematite (280 HEM)
 - Black (02)

90 003 Kitty Kat ^{NEW!}



Size
11x8 mm
21.5x8 mm with Clasp

- Colors**
- Crystal Dark Grey Pearl (001 617)
 - Black Diamond F (215)
 - Crystal Pearlescent White Pearl (001 969)
 - Light Rose F (223)

90 004 Uni Unicorn ^{NEW!}



Size
15x8 mm
22x8 mm with Clasp

- Colors**
- Crystal Rosaline Pearl (001 294)
 - Light Rose F (223)
 - Crystal Iridescent Light Blue Pearl (001 948)
 - Crystal AB (001 AB)

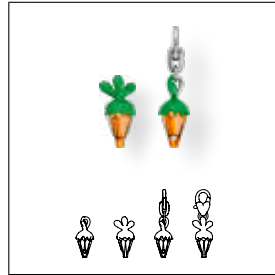
90 101 Blazing Ball ^{NEW!}



Size
9x6.5 mm
20x6.5 mm with Clasp

- Crystal**
- Crystal (001)
- White (01)
- Colors**
- Plain Colors**
- Light Rose (223)
- Rose (06)
- Crystal Effects**
- Transparent Effects**
- Crystal Golden Shadow (001 GSHA)
- Pearl Silk (05)
- Color Effects**
- Transparent Effects**
- Light Sapphire Shimmer (211 SHIM)
- Cadet Blue (43)

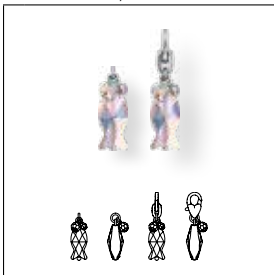
90 102 Carly Carrot ^{NEW!}



Size
16.5x8 mm
26.5x8 mm with Clasp

- Colors**
- Plain Colors**
- Topaz F (203)
- Light Green (10)

90 105 Freddy Fish ^{NEW!}



Size
17x7 mm
28x7 mm with Clasp

- Multicolors**
- Crystal AB (001 AB)
- Crystal AB (001 AB)

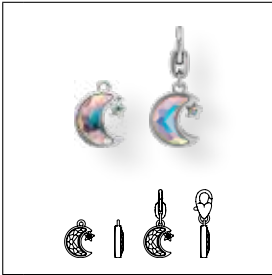
90 107 Louey Lollipop ^{NEW!}



Size
19.5x8 mm
30x8 mm with Clasp

- Multicolors**
- Crystal AB (001 AB)
- Light Sapphire Shimmer (211 SHIM)

90 108 Lizzy Luna ^{NEW!}



Size
14x11 mm
25x11 mm with Clasp

- Crystal Effects**
- Transparent Effects**
- Crystal AB (001 AB)
 - Crystal AB (001 AB)

90 109 Bella Butterfly ^{NEW!}



Size
9x8 mm
20x8 mm with Clasp

- Colors**
- Plain Colors**
- Aquamarine (202)
 - Light Rose (223)

90 110 Huggy Heart ^{NEW!}



Size
10.5x8 mm
21x8 mm with Clasp

- Colors**
- Plain Colors**
- Light Siam (227)
 - Rose (209)

90 111 Candy Clover ^{NEW!}



Size
11x7.5 mm
21.5x7.5 mm with Clasp

- Colors**
- Plain Colors**
- Peridot (214)

90 112 Sassy Star ^{NEW!}



Size
9.5x8 mm
20.5x8 mm with Clasp

- Colors**
- Plain Colors**
- Crystal AB (001 AB)

90 113 Polly Paw ^{NEW!}



Size
9x10.5 mm
19x10.5 mm with Clasp

- Colors**
- Plain Colors**
- Jet (280)
- Multicolors**
- Rosaline (508)
 - Light Rose (223)

CRYSTAL PEARLS

5810 Crystal Round Pearl

Iridescent Colors

- Crystal Iridescent Dreamy Blue Pearl (001 2026) **NEW!**
- Crystal Iridescent Dreamy Rose Pearl (001 2025) **NEW!**

5817

Iridescent Colors

- Crystal Iridescent Dreamy Blue Pearl (001 2026) **NEW!**
- Crystal Iridescent Dreamy Rose Pearl (001 2025) **NEW!**

5818

Iridescent Colors

- Crystal Iridescent Dreamy Blue Pearl (001 2026) **NEW!**
- Crystal Iridescent Dreamy Rose Pearl (001 2025) **NEW!**

5824 Crystal Rice Pearl

Iridescent Colors

- Crystal Iridescent Dreamy Blue Pearl (001 2026) **NEW!**
- Crystal Iridescent Dreamy Rose Pearl (001 2025) **NEW!**

5860 Crystal Coin Pearl

Iridescent Colors

- Crystal Irid Dreamy Blue Pearl (001 2026) **NEW!**
- Crystal Irid Dreamy Rose Pearl (001 2025) **NEW!**

PENDANTS

CORE ASSORTMENT

6010 Briolette Pendant



Size	11x5.5 mm
	13x6.5 mm
	17x8.5 mm

Colors

Plain Colors

- Iris (219) NEW!
- Light Rose (223)

CORE ASSORTMENT

6106 Pear-shaped Pendant



Size	16 mm
	22 mm
	28 mm

Colors

Plain Colors

- Iris (219) NEW!
- Light Rose (223)

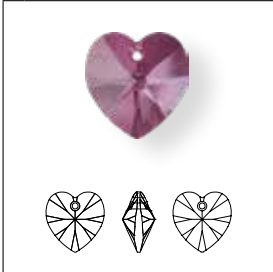
Color Effects

Transparent Effects

- Aquamarine Shimmer (202 SHIM) NEW!

CORE ASSORTMENT

6228 XILION Heart Pendant



Size	10.3x10 mm
	14.4x14 mm
	18x17.5 mm

Colors

Plain Colors

- Iris (219) NEW!
- Light Rose (223)

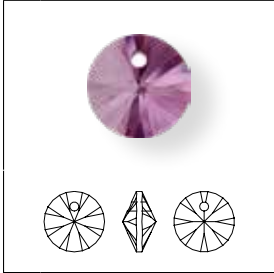
Color Effects

Transparent Effects

- Aquamarine Shimmer (202 SHIM) NEW!

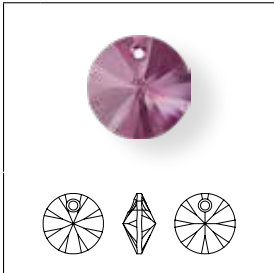
◆ Core Assortment ◆ Existing Assortment

6428 XILLION Pendant



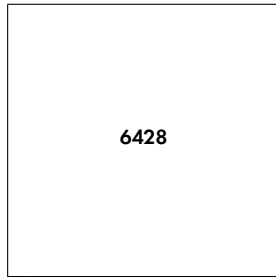
Size 6 mm

6428 XILLION Pendant

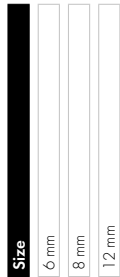


Size 8, 12 mm

CORE ASSORTMENT



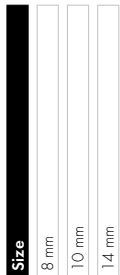
- Colors**
- Plain Colors**
- Iris (219) NEW!
- Light Rose (223)
- Color Effects**
- Transparent Effects**
- Aquamarine Shimmer (202 SHIM) NEW!



6430 Classic Cut Pendant



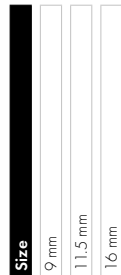
- Colors**
- Plain Colors**
- Light Rose (223)
- Crystal Effects**
- Transparent Effects**
- Crystal Shimmer (001 SHIM) NEW!
- Color Effects**
- Transparent Effects**
- Amethyst Shimmer (204 SHIM) NEW!
- Aquamarine Shimmer (202 SHIM) NEW!



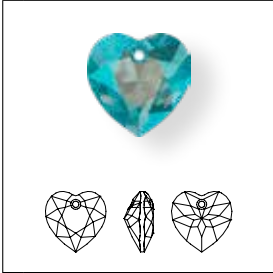
6431 Princess Cut Pendant



- Colors**
- Plain Colors**
- Light Rose (223)
- Crystal Effects**
- Transparent Effects**
- Crystal Shimmer (001 SHIM) NEW!
- Color Effects**
- Transparent Effects**
- Amethyst Shimmer (204 SHIM) NEW!
- Aquamarine Shimmer (202 SHIM) NEW!



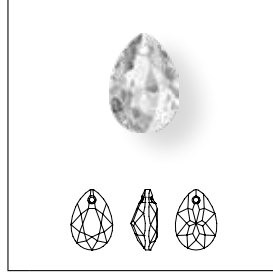
6432 Heart Cut Pendant



Size	8 mm	10.5 mm	14.5 mm
-------------	------	---------	---------

- Colors**
- Plain Colors**
- Light Rose (223)
- Crystal Effects**
- Transparent Effects**
- Crystal Shimmer (001 SHIM) NEW!
- Color Effects**
- Transparent Effects**
- Amethyst Shimmer (204 SHIM) NEW!
- Aquamarine Shimmer (202 SHIM) NEW!

6433 Pear Cut Pendant ^{NEW!}



Size	9 mm	11.5 mm	16 mm
-------------	------	---------	-------

- Crystal**
- Crystal (001)
- Colors**
- Plain Colors**
- Amethyst (204)
- Aquamarine (202)
- Emerald (205)
- Jet (280)
- Light Amethyst (212)
- Light Colorado Topaz (246)
- Light Rose (223)
- Light Siam (227)
- Majestic Blue (296)
- Montana (207)
- Peridot (214)
- Rose (209)
- Sapphire (206)
- Scarlet (276)
- Siam (208)
- Topaz (203)
- Crystal Effects**
- Transparent Effects**
- Crystal AB (001 AB)
- Crystal Shimmer (001 SHIM)
- Crystal Bermuda Blue P (001 BBI)¹
- Crystal Golden Shadow (001 GSHA)
- Crystal Silver Night (001 SINI)
- Crystal Vitrail Light P (001 VL)¹
- Crystal Vitrail Medium P (001 VM)¹
- Color Effects**
- Transparent Effects**
- Amethyst Shimmer (204 SHIM)
- Aquamarine Shimmer (202 SHIM)

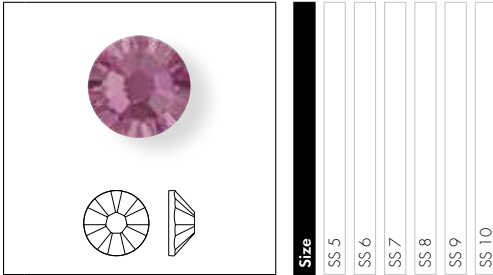
¹ For details about the protective coating, please refer to the Collection 2018 chapter 'Basic Information'.

◆ Core Assortment

FLAT BACKS NO HOTFIX

CORE ASSORTMENT

2058 XILLION Rose Enhanced



Colors

Plain Colors

	Iris F (219)	NEW!	■	■	■	■	■
	Light Rose F (223)		◆	◆	◆	◆	◆

CORE ASSORTMENT

2088 XIRIUS Rose



Colors

Plain Colors

	Iris F (219)	NEW!	■	■	■	■	■
	Light Rose F (223)		◆	◆	◆	◆	◆

Crystal Effects

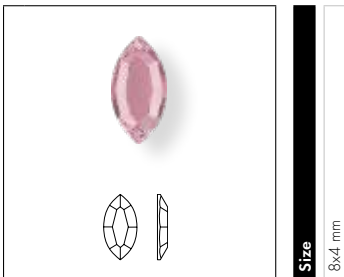
Crystal Lacquer^{PRO} Effects

Crystal Electric DeLite Lacquer^{PRO} Effects

	Crystal Electric Blue DeLite (001 L134D)	NEW!	■	■	■	■	■
	Crystal Electric Green DeLite (001 L135D)	NEW!	■	■	■	■	■
	Crystal Electric Orange DeLite (001 L136D)	NEW!	■	■	■	■	■
	Crystal Electric Pink DeLite (001 L137D)	NEW!	■	■	■	■	■
	Crystal Electric Yellow DeLite (001 L138D)	NEW!	■	■	■	■	■
	Crystal Electric White DeLite (001 L139D)	NEW!	■	■	■	■	■
	Crystal Electric Violet DeLite (001 L148D)	NEW!	■	■	■	■	■

CORE ASSORTMENT

2200 Navette Flat Back



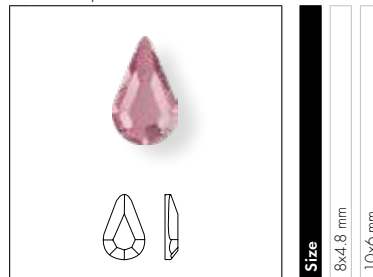
Colors

Plain Colors

	Light Rose F (223)		◆
--	--------------------	--	---

CORE ASSORTMENT

2300 Drop Flat Back



Colors

Plain Colors

	Light Rose F (223)		◆	◆
--	--------------------	--	---	---

◆ Core Assortment ◆ Existing Assortment

CORE ASSORTMENT

2400 Square Flat Back

Technical drawings showing top, side, and bottom views of the square flat back gemstone.

Size
3 mm
4 mm
6 mm

Colors

Plain Colors

- Light Rose F (223)

GEOMETRIC FLAT BACKS

2774 Elongated Pentagon Flat Back NEW!

Technical drawings showing top, side, and bottom views of the elongated pentagon flat back gemstone.

Size
6.3x4.2 mm
8.3x5.6 mm
12.5x8.4 mm

Crystal

- Crystal F (001)

Colors

Plain Colors

- Aquamarine F (202)
- Black Diamond F (215)
- Jet (280)
- Light Siam F (227)

Crystal Effects

Transparent Effects

- Crystal AB F (001 AB)
- Crystal Silver Shade F (001 SSHA)

Color Effects

Metallic Effects

- Jet Hematite (280 HEM)

2775 Concise Pentagon Flat Back NEW!

Technical drawings showing top, side, and bottom views of the concise pentagon flat back gemstone.

Size
5x4.2 mm
6.7x5.6 mm
10x8.4 mm

Crystal

- Crystal F (001)

Colors

Plain Colors

- Aquamarine F (202)
- Black Diamond F (215)
- Jet (280)
- Light Siam F (227)

Crystal Effects

Transparent Effects

- Crystal AB F (001 AB)
- Crystal Silver Shade F (001 SSHA)

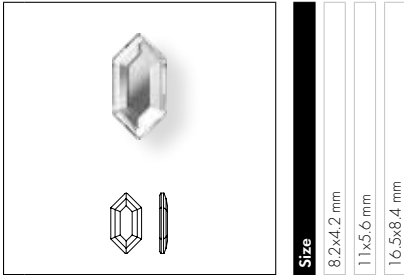
Color Effects

Metallic Effects

- Jet Hematite (280 HEM)

◆ Core Assortment

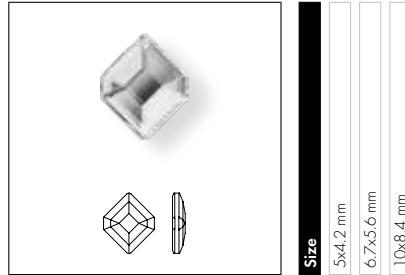
2776 Elongated Hexagon Flat Back ^{NEW!}



Size	8.2x4.2 mm
	11x5.6 mm
	16.5x8.4 mm

Crystal		
<input type="checkbox"/> Crystal F (001)	<input type="checkbox"/>	<input type="checkbox"/>
Colors		
Plain Colors		
<input type="checkbox"/> Aquamarine F (202)	<input type="checkbox"/>	<input type="checkbox"/>
<input type="checkbox"/> Black Diamond F (215)	<input type="checkbox"/>	<input type="checkbox"/>
<input type="checkbox"/> Jet (280)	<input type="checkbox"/>	<input type="checkbox"/>
<input type="checkbox"/> Light Siam F (227)	<input type="checkbox"/>	<input type="checkbox"/>
Crystal Effects		
Transparent Effects		
<input type="checkbox"/> Crystal AB F (001 AB)	<input type="checkbox"/>	<input type="checkbox"/>
<input type="checkbox"/> Crystal Silver Shade F (001 SSHA)	<input type="checkbox"/>	<input type="checkbox"/>
Color Effects		
Metallic Effects		
<input type="checkbox"/> Jet Hematite (280 HEM)	<input type="checkbox"/>	<input type="checkbox"/>

2777 Concise Hexagon Flat Back ^{NEW!}



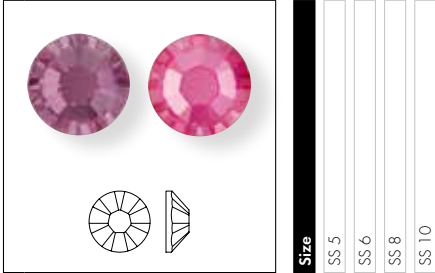
Size	5x4.2 mm
	6.7x5.6 mm
	10x8.4 mm

Crystal		
<input type="checkbox"/> Crystal F (001)	<input type="checkbox"/>	<input type="checkbox"/>
Colors		
Plain Colors		
<input type="checkbox"/> Aquamarine F (202)	<input type="checkbox"/>	<input type="checkbox"/>
<input type="checkbox"/> Black Diamond F (215)	<input type="checkbox"/>	<input type="checkbox"/>
<input type="checkbox"/> Jet (280)	<input type="checkbox"/>	<input type="checkbox"/>
<input type="checkbox"/> Light Siam F (227)	<input type="checkbox"/>	<input type="checkbox"/>
Crystal Effects		
Transparent Effects		
<input type="checkbox"/> Crystal AB F (001 AB)	<input type="checkbox"/>	<input type="checkbox"/>
<input type="checkbox"/> Crystal Silver Shade F (001 SSHA)	<input type="checkbox"/>	<input type="checkbox"/>
Color Effects		
Metallic Effects		
<input type="checkbox"/> Jet Hematite (280 HEM)	<input type="checkbox"/>	<input type="checkbox"/>

FLAT BACKS HOTFIX

CORE ASSORTMENT

2038 XILION Rose Hotfix



Colors

Plain Colors

Iris A HF (219)	NEW!	■	■	■
Light Rose A HF (223)		◆	◆	◆

Crystal Effects

Crystal Lacquer^{PRO} Effects

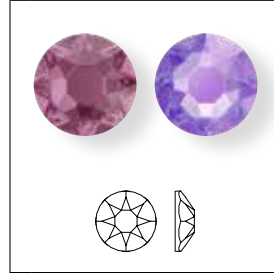
Crystal Electric DeLite Lacquer^{PRO} Effects

Crystal Electric Blue DeLite HFT (001 L134D)	NEW!			■
Crystal Electric Green DeLite HFT (001 L135D)	NEW!			■
Crystal Electric Orange DeLite HFT (001 L136D)	NEW!			■
Crystal Electric Pink DeLite HFT (001 L137D)	NEW!			■
Crystal Electric Yellow DeLite HFT (001 L138D)	NEW!			■
Crystal Electric White DeLite HFT (001 L139D)	NEW!			■
Crystal Electric Violet DeLite HFT (001 L148D)	NEW!			■

Size				
SS 5				
SS 6				
SS 8				
SS 10				

CORE ASSORTMENT

2078 XIRIUS Rose Hotfix



Colors

Plain Colors

Iris A HF (219)	NEW!	■	■	■	■
Light Rose A HF (223)		◆	◆	◆	◆

Crystal Effects

Crystal Lacquer^{PRO} Effects

Crystal Electric DeLite Lacquer^{PRO} Effects

Crystal Electric Blue DeLite HFT (001 L134D)	NEW!				■
Crystal Electric Green DeLite HFT (001 L135D)	NEW!				■
Crystal Electric Orange DeLite HFT (001 L136D)	NEW!				■
Crystal Electric Pink DeLite HFT (001 L137D)	NEW!				■
Crystal Electric Yellow DeLite HFT (001 L138D)	NEW!				■
Crystal Electric White DeLite HFT (001 L139D)	NEW!				■
Crystal Electric Violet DeLite HFT (001 L148D)	NEW!				■

Size					
SS 12					
SS 16					
SS 20					
SS 30					
SS 34					

◆ Core Assortment ◆ Existing Assortment

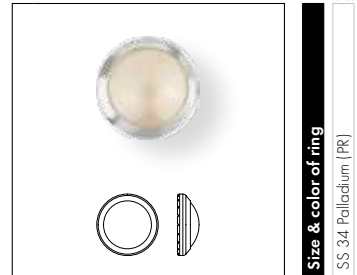
PALLADIUM PLATING FOR FRAMED FLAT BACKS

2078/H Framed Flat Back¹



	NEW!	NEW!	NEW!
Size & color of ring	SS 16 Palladium [PR]	SS 20 Palladium [PR]	SS 34 Palladium [PR]
Crystal			
Crystal A HF (001)			
Colors			
Plain Colors			
Black Diamond A HF (215)			
Denim Blue A HF (266)			
Jet A HF (280)			
Light Colorado Topaz A HF (246)			
Light Rose A HF (223)			
Light Siam A HF (227)			
Silk A HF (391)			
Crystal Effects			
Transparent Effects			
Crystal AB A HF (001 AB)			
Crystal Golden Shadow A HF (001 GSHA)			
Crystal Silver Night A HF (001 SINI)			
Crystal Silver Shade A HF (001 SSHA)			
Metallic Effects			
Crystal Light Chrome A HF (001 LTCH)			
Crystal Scarabeus Green*** A HF (001 SCGR)			
Color Effects			
Transparent Effects			
Jet Hematite A HF (280 HEM)			

2080/H Framed Cabochon



	NEW!
Size & color of ring	SS 34 Palladium [PR]
Colors	
Plain Colors	
Jet M HF (280)	
Crystal Pearl Colors	
Crystal Nacre HF (001 191)	
Crystal Cream Pearl HF (001 291)	
Crystal White Pearl HF (001 650)	
Crystal Effects	
Transparent Effects	
Crystal Golden Shadow HF (001 GSHA)	
Crystal Color Effects	
Metallic Effects	
Jet Hematite M HF (280 HEM)	

Application Advice

The Framed Flat Back and Framed Cabochon Hotfix can be easily applied using a standard heat press. Depending on the article's size, use Hotfix

parameters for Framed Flat Backs (Hotfix selector 5) or Framed Cabochons (Hotfix selector 6). Framed Cabochon Hotfix are not suitable for application from the front.

Use application aids such as Teflon® foil (art. 9010/003), pressing cloth, and height compensation such as a silicone ironing pad/foam (art. 9010/002).

Care Instructions

The care instructions for the respective product group apply.

For detailed information, please refer to the Application Manual and our

business website SWAROVSKI-PROFESSIONAL.COM

*** designed by Jean Paul Gaultier

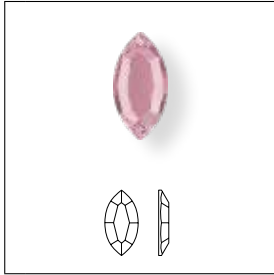
¹ General lead time: approx. 3 weeks.

The lead time for sampling quantities of up to 2 packing units is approx. 3 weeks.

For special or rush orders, please get in touch with your customer service representative.

CORE ASSORTMENT

2200 Navette Flat Back



Size
8x4 mm

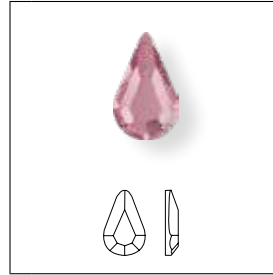
Colors

Plain Colors

Light Rose M HF (223)

CORE ASSORTMENT

2300 Drop Flat Back



Size
8x4.8 mm

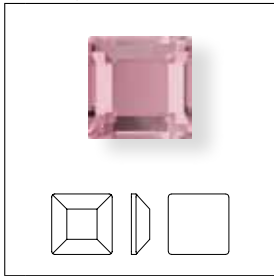
Colors

Plain Colors

Light Rose M HF (223)

CORE ASSORTMENT

2400 Square Flat Back



Size
3 mm
4 mm

Colors

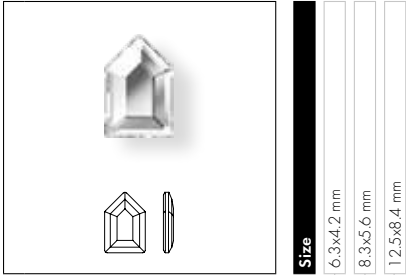
Plain Colors

Light Rose M HF (223)

◆ Core Assortment

GEOMETRIC FLAT BACKS

2774 Elongated Pentagon Flat Back ^{NEW!}



Size
6.3x4.2 mm
8.3x5.6 mm
12.5x8.4 mm

- Crystal**
- Crystal M HF (001)
- Colors**
- Plain Colors**
- Black Diamond M HF (215)
- Light Siam M HF (227)
- Crystal Effects**
- Transparent Effects**
- Crystal AB M HF (001 AB)
- Color Effects**
- Metallic Effects**
- Jet Hematite M HF (280 HEM)

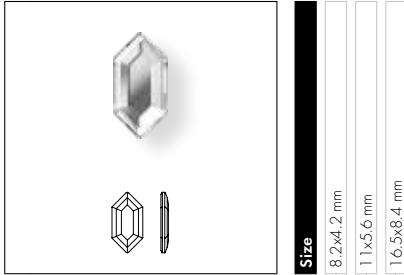
2775 Concise Pentagon Flat Back ^{NEW!}



Size
5x4.2 mm
6.7x5.6 mm
10x8.4 mm

- Crystal**
- Crystal M HF (001)
- Colors**
- Plain Colors**
- Black Diamond M HF (215)
- Light Siam M HF (227)
- Crystal Effects**
- Transparent Effects**
- Crystal AB M HF (001 AB)
- Color Effects**
- Metallic Effects**
- Jet Hematite M HF (280 HEM)

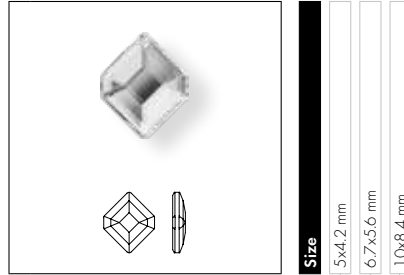
2776 Elongated Hexagon Flat Back ^{NEW!}



Size
 8.2x4.2 mm
 11x5.6 mm
 16.5x8.4 mm

- Crystal**
- Crystal M HF (001)
- Colors**
- Plain Colors**
- Black Diamond M HF (215)
- Light Siam M HF (227)
- Crystal Effects**
- Transparent Effects**
- Crystal AB M HF (001 AB)
- Color Effects**
- Metallic Effects**
- Jet Hematite M HF (280 HEM)

2777 Concise Hexagon Flat Back ^{NEW!}



Size
 5x4.2 mm
 6.7x5.6 mm
 10x8.4 mm

- Crystal**
- Crystal M HF (001)
- Colors**
- Plain Colors**
- Black Diamond M HF (215)
- Light Siam M HF (227)
- Crystal Effects**
- Transparent Effects**
- Crystal AB M HF (001 AB)
- Color Effects**
- Metallic Effects**
- Jet Hematite M HF (280 HEM)

Application Advice

Geometric Flat Backs Hotfix can be easily applied with a standard heat press using the parameters for Creation Stones (smaller than 8mm) or Creation

Stones Plus (larger than 8mm). Note that Creation Stones Plus are not suitable for application from the front.

Use application aids such as Teflon® foil (art. 9010/003), pressing cloth, and height compensation such as a silicone ironing pad/foam (art. 9010/002).

Care Instructions

The care instructions for Geometric Flat Backs Hotfix smaller than 8mm are the same as those that apply to Creation Stones from the Flat Back Hotfix

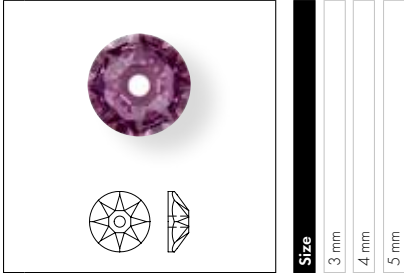
assortment. For Geometric Flat Backs Hotfix larger than 8mm use the care instructions for Creation Stones Plus.

For detailed information, please refer to the Application Manual and our business website SWAROVSKI-PROFESSIONAL.COM

SEW-ON ARTICLES

CORE ASSORTMENT

3188 XIRIUS Lochrose



Size
3 mm
4 mm
5 mm

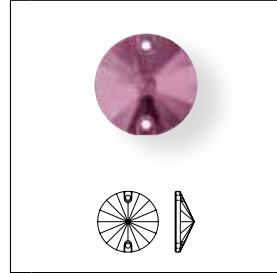
Colors

Plain Colors

Iris F (219)	NEW!	◆	◆
Light Rose F (223)		◆	◆

CORE ASSORTMENT

3200 Rivali Sew-on Stone



Size
10 mm
12 mm
14 mm

Colors

Plain Colors

Iris F (219)	NEW!	◆	◆
Light Rose F (223)		◆	◆

CORE ASSORTMENT

3230 Drop Sew-on Stone



Size
12x7 mm
18x10.5 mm
28x17 mm

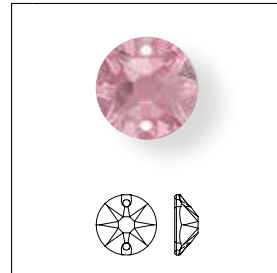
Colors

Plain Colors

Light Rose F (223)	◆	◆	◆
--------------------	---	---	---

CORE ASSORTMENT

3288 XIRIUS Sew-on Stone



Size
8 mm
10 mm
12 mm

Colors

Plain Colors

Light Rose F (223)	◆	◆	◆
--------------------	---	---	---

◆ Core Assortment ◆ Existing Assortment

CRYSTAL ELEMENTS

Article Size	Packing Unit = Minimum Order Quantity in Pieces	Average Net Weight in Grams per Packing Unit Crystal (001)	Average Gross Weight in Grams per Packing Unit Crystal (001)
1400			
10 mm	72	42.7	64.6
12 mm	72	75.0	96.9
14 mm	36	59.5	85.9
18 mm	24	84.4	103.3
4162			
10x5.5 mm	144	23.8	34.9
14x7.5 mm	72	36.0	56.4
18x9.5 mm	48	49.6	70.5
4162/S			
10x5.5 mm	144	38.9	43.2
14x7.5 mm	72	36.0	38.2
18x9.5 mm	48	49.4	49.6
4460			
8 mm	72	32.1	49.2
10 mm	48	41.1	58.8
14 mm	24	55.1	70.4
18 mm	15	70.5	88.7
4460/S			
8 mm	72	54.7	59.0
10 mm	48	55.5	58.4
14 mm	24	48.7	50.1
18 mm	15	44.4	45.1
4480			
14 mm	48	115.2	136.1
18 mm	15	75.0	92.9
4480/S			
14 mm	48	68.6	70.1
18 mm	15	38.0	38.4
86 401			
8 mm	12	14.4	33.3
9 mm	12	19.2	38.1
90 001			
15x8 mm	12	13.2	35.2
22.5x8 mm with Clasp	12	20.4	42.4
90 002			
16x10.5 mm	12	24.0	46.0
27x10x5 mm	12	31.2	53.2
90 003			
11x8 mm	12	10.8	32.8
21.5x8 mm with Clasp	12	18.0	10.0
90 004			
15x8 mm	12	15.6	37.6
22x8 mm with Clasp	12	22.8	44.8

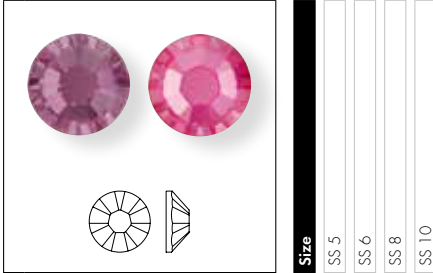
Article Size	Packing Unit = Minimum Order Quantity in Pieces	Average Net Weight in Grams per Packing Unit Crystal (001)	Average Gross Weight in Grams per Packing Unit Crystal (001)
90 101			
9x6.5 mm	12	2.4	24.4
20x6.5 mm with Clasp	12	9.6	31.6
90 102			
16.5x8 mm	12	8.4	30.4
26.5x8 mm with Clasp	12	15.6	37.6
90 105			
17x7 mm	12	14.4	36.4
28x7 mm with Clasp	12	21.6	43.6
90 107			
19.5x8 mm	12	12.0	34.0
30x8 mm with Clasp	12	19.2	41.2
90 108			
14x11 mm	12	13.2	35.2
25x11 mm with Clasp	12	20.4	42.4
90 109			
9x8 mm	12	3.6	25.6
20x8 mm with Clasp	12	10.8	32.8
90 110			
10.5x8 mm	12	3.6	25.6
21x8 mm with Clasp	12	10.8	32.8
90 111			
11x7.5 mm	12	6.0	28.0
21.5x7.5 mm with Clasp	12	13.2	35.2
90 112			
9.5x8 mm	12	3.6	25.6
20.5x8 mm with Clasp	12	10.8	32.8
90 113			
9x10.5 mm	12	7.2	29.2
19x10.5 mm with Clasp	12	14.4	36.4
6433			
9 mm	72	18.1	33.2
11.5 mm	48	28.8	46.1
16 mm	36	54.0	71.9
2774			
6.3x4.2 mm	288	18.7	29.6
8.3x5.6 mm	144	19.5	39.4
12.5x8.4 mm	96	39.0	60.3
2775			
5x4.2 mm	288	13.9	24.7
6.7x5.6 mm	144	15.0	34.3
10x8.4 mm	144	43.6	66.4

Article Size	Packing Unit = Minimum Order Quantity in Pieces	Average Net Weight in Grams per Packing Unit Crystal (001)	Average Gross Weight in Grams per Packing Unit Crystal (001)
2776			
8.2x4.2 mm	144	11.2	30.1
11x5.6 mm	72	11.3	28.8
16.5x8.4 mm	72	35.6	55.8
2777			
5x4.2 mm	288	10.4	21.3
6.7x5.6 mm	144	10.5	29.7
10x8.4 mm	144	32.8	52.7
2078/H			
SS 16 Palladium (PR)	1,440	77.6	86.5
SS 20 Palladium (PR)	1,440	130.1	139.0
SS 34 Palladium (PR)	144	38.5	47.4
2080/H			
SS 34 Palladium (PR)	144	34.2	48.7

TRANSFERS

CORE ASSORTMENT

2038 XILLION Rose Halfix



Colors	SS 5	SS 6	SS 8	SS 10
Plain Colors				
Iris A HF (219) <small>NEW!</small>	■	■	■	■
Light Rose A HF (223)	◆	◆	◆	◆
Crystal Effects				
Crystal Lacquer^{PRO} Effects				
Crystal Electric DeLite Lacquer^{PRO} Effects				
Crystal Electric Blue DeLite HFT (001 1134D) <small>NEW!</small>				■
Crystal Electric Green DeLite HFT (001 1135D) <small>NEW!</small>				■
Crystal Electric Orange DeLite HFT (001 1136D) <small>NEW!</small>				■
Crystal Electric Pink DeLite HFT (001 1137D) <small>NEW!</small>				■
Crystal Electric Yellow DeLite HFT (001 1138D) <small>NEW!</small>				■
Crystal Electric White DeLite HFT (001 1139D) <small>NEW!</small>				■
Crystal Electric Violet DeLite HFT (001 1148D) <small>NEW!</small>				■

CORE ASSORTMENT

2078 XIRIUS Rose Halfix



Colors	SS 12	SS 16	SS 20	SS 30	SS 34
Plain Colors					
Iris A HF (219) <small>NEW!</small>	■	■	■	■	■
Light Rose A HF (223)	◆	◆	◆	◆	◆
Crystal Effects					
Crystal Lacquer^{PRO} Effects					
Crystal Electric DeLite Lacquer^{PRO} Effects					
Crystal Electric Blue DeLite HFT (001 1134D) <small>NEW!</small>		■	■	■	■
Crystal Electric Green DeLite HFT (001 1135D) <small>NEW!</small>		■	■	■	■
Crystal Electric Orange DeLite HFT (001 1136D) <small>NEW!</small>		■	■	■	■
Crystal Electric Pink DeLite HFT (001 1137D) <small>NEW!</small>		■	■	■	■
Crystal Electric Yellow DeLite HFT (001 1138D) <small>NEW!</small>		■	■	■	■
Crystal Electric White DeLite HFT (001 1139D) <small>NEW!</small>		■	■	■	■
Crystal Electric Violet DeLite HFT (001 1148D) <small>NEW!</small>		■	■	■	■

◆ Core Assortment ◆ Existing Assortment

PALLADIUM PLATING FOR FRAMED FLAT BACKS

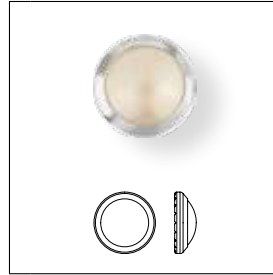
2078/H Framed Flat Back¹



- Size & color of ring**
- NEW! SS 16 Palladium (PR)
 - NEW! SS 20 Palladium (PR)
 - NEW! SS 34 Palladium (PR)

- Crystal**
- Crystal A HF (001)
- Colors**
- Plain Colors**
- Black Diamond A HF (215)
- Denim Blue A HF (266)
- Jet A HF (280)
- Light Colorado Topaz A HF (246)
- Light Rose A HF (223)
- Light Siam A HF (227)
- Silk A HF (391)
- Crystal Effects**
- Transparent Effects**
- Crystal AB A HF (001 AB)
- Crystal Golden Shadow A HF (001 GSHA)
- Crystal Silver Night A HF (001 SINI)
- Crystal Silver Shade A HF (001 SSHA)
- Metallic Effects**
- Crystal Light Chrome A HF (001 LTCH)
- Crystal Scarabeus Green*** A HF (001 SCGR)
- Color Effects**
- Transparent Effects**
- Jet Hematite A HF (280 HEM)

2080/H Framed Cabochon



- Size & color of ring**
- NEW! SS 34 Palladium (PR)

- Colors**
- Plain Colors**
- Jet M HF (280)
- Crystal Pearl Colors**
- Crystal Nacre HF (001 191)
- Crystal Cream Pearl HF (001 291)
- Crystal White Pearl HF (001 650)
- Crystal Effects**
- Transparent Effects**
- Crystal Golden Shadow HF (001 GSHA)
- Crystal Color Effects**
- Metallic Effects**
- Jet Hematite M HF (280 HEM)

Application Advice

The Framed Flat Back and Framed Cabochon Hotfix can be easily applied using a standard heat press. Depending on the article's size, use Hotfix

parameters for Framed Flat Backs (Hotfix selector 5) or Framed Cabochons (Hotfix selector 6). Framed Cabochon Hotfix are not suitable for application from the front.

Use application aids such as Teflon® foil (art. 9010/003), pressing cloth, and height compensation such as a silicone ironing pad/foam (art. 9010/002).

Care Instructions

The care instructions for the respective product group apply.

For detailed information, please refer to the Application Manual and our

business website SWAROVSKI-PROFESSIONAL.COM

*** designed by Jean Paul Gaultier

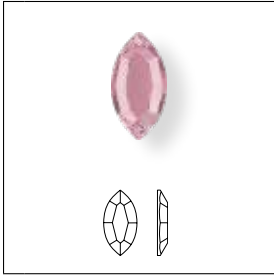
¹ General lead time: approx. 3 weeks.

The lead time for sampling quantities of up to 2 packing units is approx. 3 weeks.

For special or rush orders, please get in touch with your customer service representative.

CORE ASSORTMENT

2200 Navette Flat Back



Size
8x4 mm

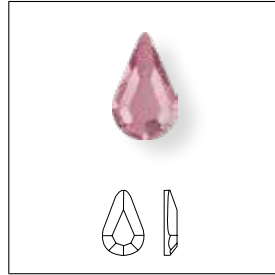
Colors

Plain Colors

◆ Light Rose M HF (223)

CORE ASSORTMENT

2300 Drop Flat Back



Size
8x4.8 mm

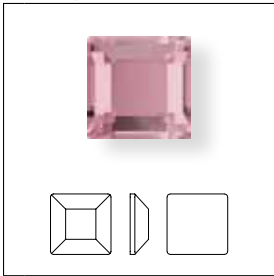
Colors

Plain Colors

◆ Light Rose M HF (223)

CORE ASSORTMENT

2400 Square Flat Back



Size
3 mm
4 mm

Colors

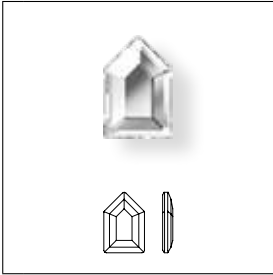
Plain Colors

◆ Light Rose M HF (223)

◆ Core Assortment

GEOMETRIC FLAT BACKS

2774 Elongated Pentagon Flat Back ^{NEW!}



Size
6.3x4.2 mm
8.3x5.6 mm
12.5x8.4 mm

- Crystal**
- Crystal M HF (001)
- Colors**
- Plain Colors**
- Black Diamond M HF (215)
- Light Siam M HF (227)
- Crystal Effects**
- Transparent Effects**
- Crystal AB M HF (001 AB)
- Color Effects**
- Metallic Effects**
- Jet Hematite M HF (280 HEM)

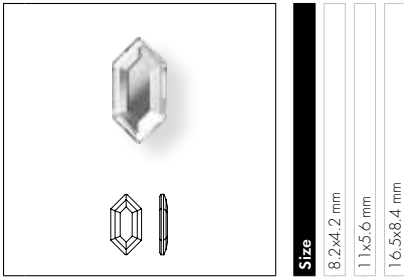
2775 Concise Pentagon Flat Back ^{NEW!}



Size
5x4.2 mm
6.7x5.6 mm
10x8.4 mm

- Crystal**
- Crystal M HF (001)
- Colors**
- Plain Colors**
- Black Diamond M HF (215)
- Light Siam M HF (227)
- Crystal Effects**
- Transparent Effects**
- Crystal AB M HF (001 AB)
- Color Effects**
- Metallic Effects**
- Jet Hematite M HF (280 HEM)

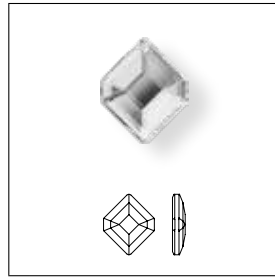
2776 Elongated Hexagon Flat Back NEW!



Size
 8.2x4.2 mm
 11x5.6 mm
 16.5x8.4 mm

- Crystal**
- Crystal M HF (001)
- Colors**
- Plain Colors**
- Black Diamond M HF (215)
- Light Siam M HF (227)
- Crystal Effects**
- Transparent Effects**
- Crystal AB M HF (001 AB)
- Color Effects**
- Metallic Effects**
- Jet Hematite M HF (280 HEM)

2777 Concise Hexagon Flat Back NEW!



Size
 5x4.2 mm
 6.7x5.6 mm
 10x8.4 mm

- Crystal**
- Crystal M HF (001)
- Colors**
- Plain Colors**
- Black Diamond M HF (215)
- Light Siam M HF (227)
- Crystal Effects**
- Transparent Effects**
- Crystal AB M HF (001 AB)
- Color Effects**
- Metallic Effects**
- Jet Hematite M HF (280 HEM)

Application Advice

Geometric Flat Backs Hotfix can be easily applied with a standard heat press using the parameters for Creation Stones (smaller than 8mm) or Creation

Stones Plus (larger than 8mm). Note that Creation Stones Plus are not suitable for application from the front.

Use application aids such as Teflon® foil (art. 9010/003), pressing cloth, and height compensation such as a silicone ironing pad/foam (art. 9010/002).

Care Instructions

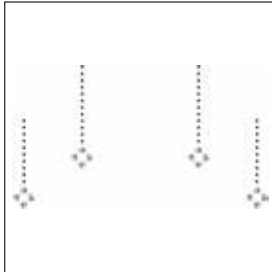
The care instructions for Geometric Flat Backs Hotfix smaller than 8mm are the same as those that apply to Creation Stones from the Flat Back Hotfix

assortment. For Geometric Flat Backs Hotfix larger than 8mm use the care instructions for Creation Stones Plus.

For detailed information, please refer to the Application Manual and our business website SWAROVSKI-PROFESSIONAL.COM

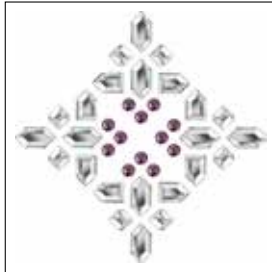
STANDARD COLLECTION

13 425



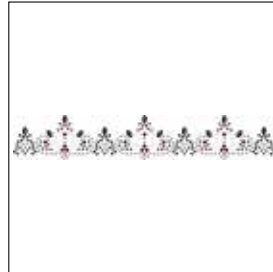
C 253/001
E S6/2775MM5x4.2
S ~169x95
M 10 PCS **20%**

13 426



C 219/001/001/001
E S10/2774MM6.3x4.2/2776MM
 8.2x4.2/2777MM5x4.2
S ~51x51
M 76 PCS **65%**

13 427



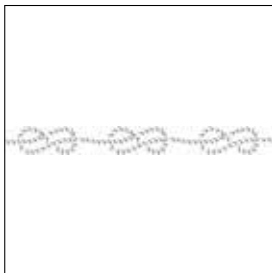
C 096/R4007-280HEM/219/253/
 001MOL
E M2/M2.5-22084MM6x3.5/S6/
 S6/S6
S ~173x29
M 11 PCS **20%**

13 428



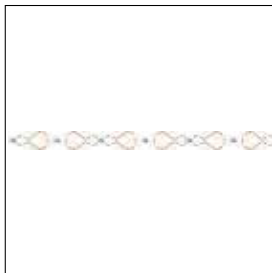
C 001GSHA/001GSHA/001AB
E P3/S6/2776MM8.2x4.2
S ~245x45
M 12 PCS **14%**

13 429



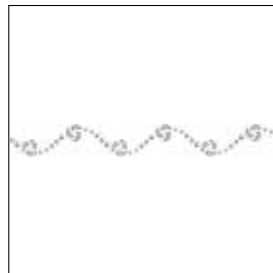
C 001650
E 22084MM6x3.5
S ~924x23 (12 SEG/ROW)
M 6 ROWS **16%**

13 430



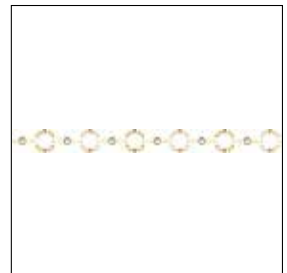
C R1019-001MOL/001
E M2-S6/2776MM8.2x4.2
S ~941x16 (12 SEG/ROW)
M 8 ROWS **15%**

13 431



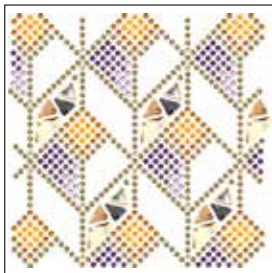
C 001SSHA/001SSHA/001SSHA/
 001SSHA/001SSHA
E S6/S8/S10/2364MM6x3.7/
 2365MM6x3.7
S ~939x17 (19 SEG/ROW)
M 6 ROWS **25%**

13 432



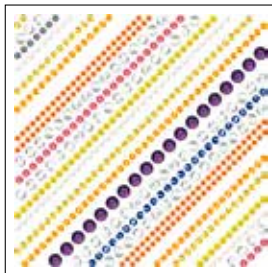
C 001 GR/080/091-001GSHA/
 0011106S
E FFB16/M2/M2-S8/S10
S ~980x13 (19 SEG/ROW)
M 9 ROWS **23%**

13 433



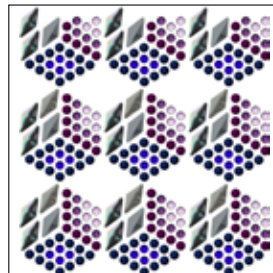
C 001DORZ/246/001MLGD/203/
 259/204/212/219/0011106S/
 246/0011111S
E CS7x6/S5/S6/S6/S6/S6/S6/
 2738MM12x6/2739MM5.8x5.3/
 2739MM5.8x5.3
S ~92x89
M 8 PCS **38%**

13 434



C R2003/R9003/R1018/R7045-259/
 001METSH/0011107D/0011110S/
 001HFT/204
E M2/M2.5/M2.5-M2.5-S8/S8/
 S10/S10/S16/S20
S ~88x87
M 8 PCS **38%**

13 435



C R5003/R4007/096/R7045/
 086-204/296/212
E M3/M3/M12x6/M12x6/
 M12x6-S12/S12/S12
S ~87x94
M 20 PCS **38%**

SYNTHETICS

SYNTHETICS EXTRA SMALL (XS)

CRYSTAL FINE ROCKS XS & CRYSTAL ULTRAFINE ROCKS XS

Fans of filigree designs will love the extra small Crystal Fine Rocks and Crystal Ultrafine Rocks. Small, double-pointed Chatons create a refined surface

structure and flexible texture that is thin and lightweight. Now it is possible to order these products smaller than the current minimum size.

Standard (Crystal Fine Rocks & Crystal Ultrafine Rocks)

Current minimum size:
15x15 mm (2.25 cm²)



NEW XS sizes for Crystal Fine Rocks

New extra small (XS) minimum sizes:
10x10 mm (1.0 cm²)



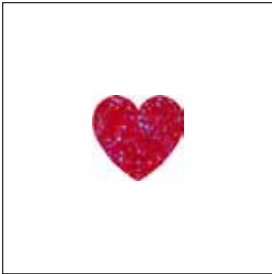
NEW XS sizes for Crystal Ultrafine Rocks

New extra small (XS) minimum size:
8x8 mm (0.64 cm²)



CRYSTAL FINE ROCKS XS

74 085



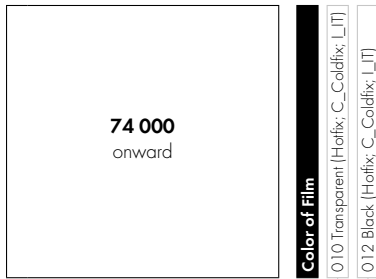
C	010-227SHIM XS
S	~12x11
M	306 PCS 100%

74 085	C	S	M	100%
Article number	Color of crystal	Motif size in mm	Minimum order quantity in pieces (PCS)	% of actual size

Ordering Example & Product Variety Explanation

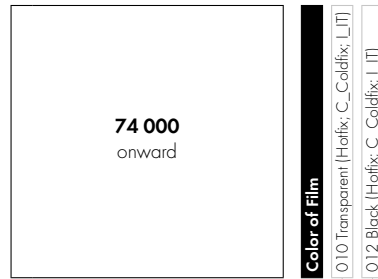
74 085	010	227SHIM	XS	
Article number	Type of base material	Color of base material	Color of crystals	Extra Small
	Hotfix	010 Transparent	Please see the respective product matrix for all available reference codes.	
	C Coldfix	012 Black		
	I It version			

AVAILABLE BASE MATERIALS AND CRYSTAL COLORS & EFFECTS



Color of Film
010 Transparent (H:offix; C:_Coldfix; L:IT)
012 Black (H:offix; C:_Coldfix; L:IT)

- Crystal**
- Crystal (001)
- Color**
- Plain Color**
- Erinte (360)
- Fuchsia (502)
- Jet (280)
- Light Siam (227)
- Mint Alabaster (397)
- Rose Alabaster (293)
- Sunflower (292)
- Tangerine (259)
- Turquoise (267)
- Vintage Rose (319)
- White Alabaster (281)
- Opal Colors**
- Chrysolite Opal (294)
- Cyclamen Opal (398)
- Rose Water Opal (395)
- White Opal (234)
- Crystal Effects**
- Transparent Effects**
- Crystal Aurore Boreale (001 AB)
- Crystal Bermuda Blue (001 BBL)
- Crystal Golden Shadow (001 GSHA)
- Crystal Heliotrope (001 HEL)
- Crystal
- Crystal Matt Finish (001 M112)
- Crystal Matt Finish (001 MAT)
- Crystal Matt Finish AB (001 MFAB)
- Crystal Matt Finish Bermuda Blue (001 MFBBL)
- Crystal Matt Finish Silver Shade (001 MFSSH)
- Crystal Moonlight (001 MOL)
- Crystal Paradise Shine (001 PARSH)
- Crystal Red Magma (001 REDM)
- Crystal Silver Shade (001 SSHA)



Color of Film
010 Transparent (H:offix; C:_Coldfix; L:IT)
012 Black (H:offix; C:_Coldfix; L:IT)

- Metallic Effects**
- Crystal Chrome (001 CHRМ)
- Crystal Comet Argent Light (001 CAL)
- Crystal Matt Finish Chrom (001 MFCHR)
- Crystal Matt Finish Metallic Light Gold (001 MFMLG)
- Crystal Metallic Light Gold (001 MLGLD)
- Crystal Metallic Sunshine (001 METSH)
- Crystal Metallic Silver (001 METSI)
- Color Effects**
- Transparent Effects**
- Crystal Shimmer (001 971)
- Jet Astral Pink (280 API)
- Light Siam Shimmer (227 971)
- Tangerine Shimmer (259 971)
- Metallic Effects**
- Jet Nut (280 NUT)
- Multicolors**
- Jet &
- Crystal Metallic Silver (001 M100)
- Crystal Metallic Light Gold & Crystal Golden Shadow (001 M103)
- Crystal Metallic Light Gold & Crystal Red Magma (001 M104)
- Jet &
- Crystal Comet Argent Light (001 M106)
- Crystal &
- Crystal Moonlight (001 M126)

Please note: Crystal Comet Argent Light (001 CAL) and Crystal Metallic Sunshine (001 METSH) are not suitable for swimwear because these effects are highly sensitive to seawater, sweat, and chlorine.

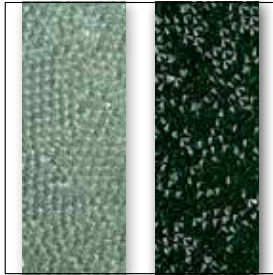
OVERVIEW OF AVAILABLE COLORS & EFFECTS

Crystal (001)



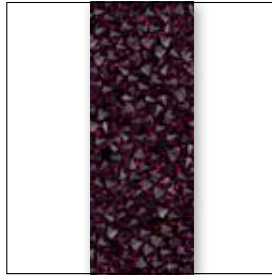
010 Transparent

Erinite (360)



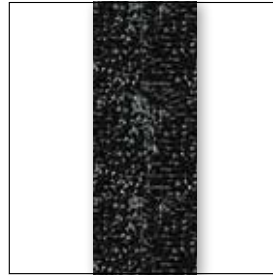
010 Transparent 012 Black

Fuchsia (502)



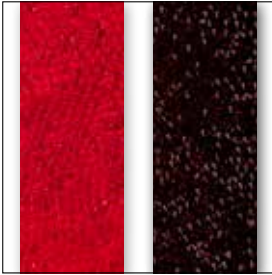
012 Black

Jet (280)



012 Black

Light Siam (227)



010 Transparent 012 Black

Mint Alabaster (397)



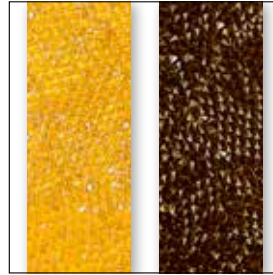
010 Transparent

Rose Alabaster (293)



010 Transparent

Sunflower (292)



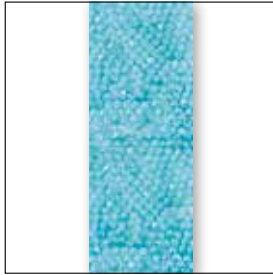
010 Transparent 012 Black

Tangerine (259)



010 Transparent 012 Black

Turquoise (267)



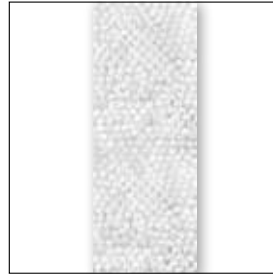
010 Transparent

Vintage Rose (319)



010 Transparent 012 Black

White Alabaster (281)



010 Transparent

Chrysolite Opal (294)



010 Transparent 012 Black

Cyclamen Opal (398)



010 Transparent 012 Black

Rose Water Opal (395)



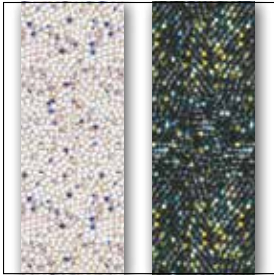
010 Transparent 012 Black

White Opal (234)



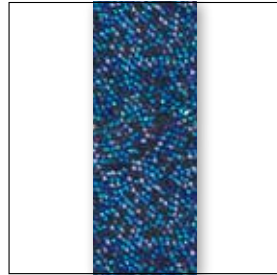
010 Transparent 012 Black

Crystal Aurore Boreale (001 AB)



010 Transparent 012 Black

Crystal Bermuda Blue (001 BBL)



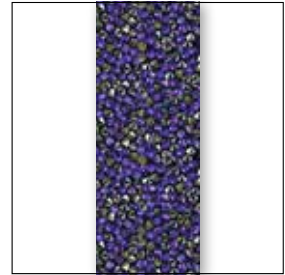
012 Black

Crystal Golden Shadow (001 GSHA)



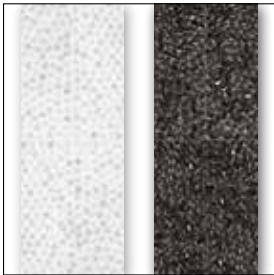
010 Transparent

Crystal Heliotrope (001 HEL)



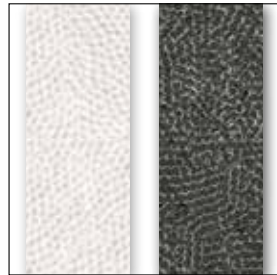
012 Black

Crystal & Crystal Matt Finish (001 M112)



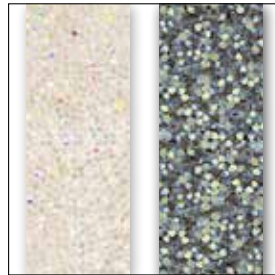
010 Transparent 012 Black

Crystal Matt Finish (001 MAT)



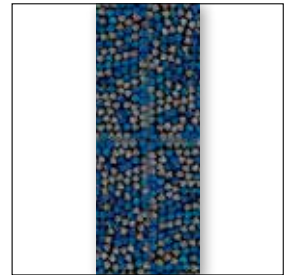
010 Transparent 012 Black

Crystal Matt Finish AB (001 MFAB)



010 Transparent 012 Black

Crystal Matt Finish Bermuda Blue (001 MFBB)



012 Black

Crystal Matt Finish Silver Shade (001 MFSSH)



010 Transparent 012 Black

Crystal Moonlight (001 MOL)



010 Transparent 012 Black

Crystal Paradise Shine (001 PARSH)



010 Transparent 012 Black

Crystal Red Magma (001 REDM)



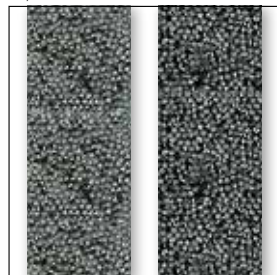
010 Transparent 012 Black

Crystal Silver Shade (001 SSHA)



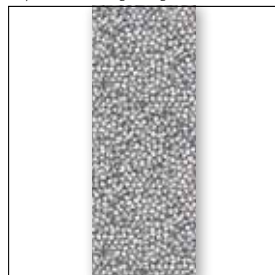
010 Transparent 012 Black

Crystal Chrom (001 CHRM)



010 Transparent 012 Black

Crystal Comet Argent Light (001 CAL)



010 Transparent

Crystal Matt Finish Chrom (001 MFCHR)



010 Transparent

Crystal Matt Finish Metallic Light Gold (001 MFMLG)



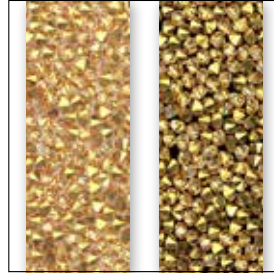
010 Transparent

Crystal Metallic Light Gold (001 MLGLD)



010 Transparent

Crystal Metallic Sunshine (001 METSH)



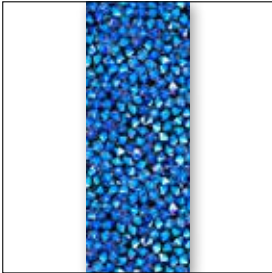
010 Transparent 012 Black

Crystal Metallic Silver (001 METSI)



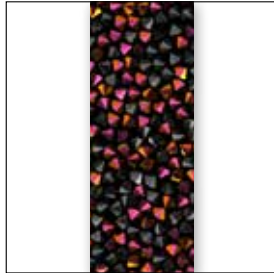
010 Transparent 012 Black

Crystal Shimmer (001 971)



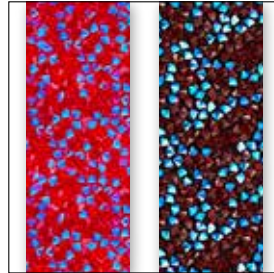
012 Black

Jet Astral Pink (280 API)



012 Black

Light Siam Shimmer (227 971)



010 Transparent 012 Black

Tangerine Shimmer (259 971)



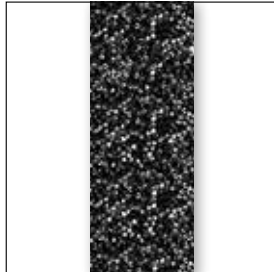
010 Transparent

Jet Nut (280 NUT)



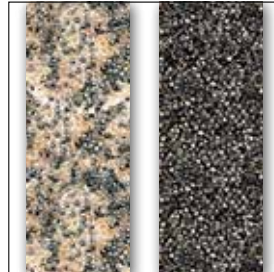
012 Black

Jet & Crystal Metallic Silver (001 M100)



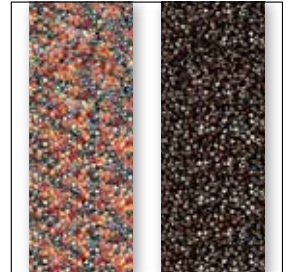
012 Black

Crystal Metallic Light Gold & Crystal Golden Shadow (001 M103)



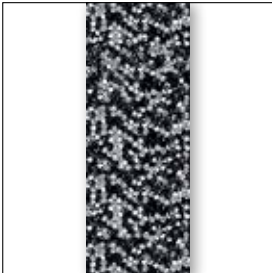
010 Transparent 012 Black

Crystal Metallic Light Gold & Crystal Red Magma (001 M104)



010 Transparent 012 Black

Jet & Crystal Comet Argent light (001 M106)



012 Black

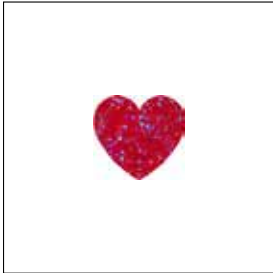
Crystal & Crystal Moonlight (001 M126)



010 Transparent 012 Black

STANDARD COLLECTION

74 085



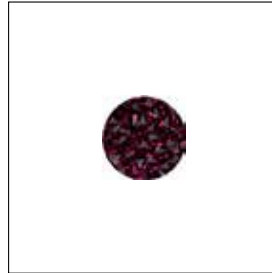
C	010-227SHIM XS
S	~12x11
M	306 PCS 100%

74 086



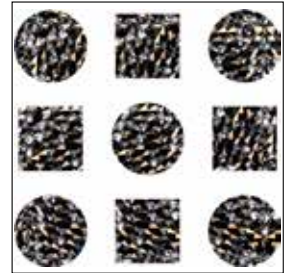
C	012-280API XS
S	~8x17
M	306 PCS 100%

74 088



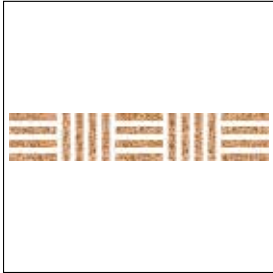
C	012-502 XS
S	~11x11
M	320 PCS 100%

74 092



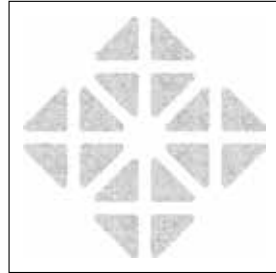
C	010-001MIGLD XS
S	~41x40
M	48 PCS 85%

74 093



C	010-001GSHA XS
S	~137x25
M	24 PCS 25%

74 094



C	010-001 XS
S	~71x71
M	30 PCS 45%

74 095

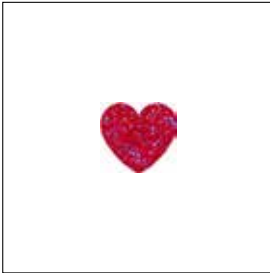


C	012-001BBL XS
S	~12x12
M	304 PCS 100%

Please note: all motifs are available in certain color/film variations (see color matrix).

CRYSTAL ULTRAFINE ROCKS XS

89 939



C 010-227SHIM XS
S ~10x9
M 396 PCS **100%**

89 939	C	S	M	100%
Article number	Color of crystal	Motif size in mm	Minimum order quantity in pieces (PCS)	% of actual size

Ordering Example & Product Variety Explanation

89 939	010	227SHIM	XS	
Article number	Type of base material	Color of base material	Color of crystals	Extra Small
	Hofix	010 Transparent	Please see the respective product matrix for all available reference codes.	
	C Coldfix	012 Black		
	I It version	022 White (only available for White Alabaster)		

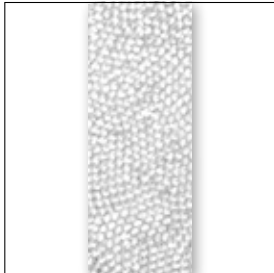
AVAILABLE BASE MATERIALS AND CRYSTAL COLORS & EFFECTS

89 900-89 999	Color of Film	010 Transparent (Hotfix; C_Coldfix; L_IT)	012 Black (Hotfix; C_Coldfix; L_IT)	022 White (Hotfix; C_Coldfix; L_IT)
Crystal				
Crystal (001)		■		
Color				
Plain Color				
Fuchsia (502)			■	
Jet (280)			■	
White Alabaster (281)				■
Crystal Effects				
Transparent Effects				
Crystal Aurore Boreale (001 AB)		■	■	
Crystal Bermuda Blue (001 BBL)			■	
Crystal Golden Shadow (001 GSHA)		■		
Crystal Moonlight (001 MOL)		■	■	
Crystal Paradise Shine (001 PARSH)		■	■	
Crystal Red Magma (001 REDM)		■	■	
Crystal Silver Shade (001 SSHA)		■	■	
Metallic Effects				
Crystal Chrome (001 CHRM)		■	■	
Crystal Comet Argent Light (001 CAL)		■		
Crystal Metallic Light Gold (001 MLGLD)		■		
Crystal Metallic Silver (001 METSI)		■	■	
Crystal Metallic Sunshine (001 METSH)*		■	■	
Color Effects				
Transparent Effects				
Crystal Shimmer (001 971)			■	
Jet Astral Pink (280 API)			■	
Light Siam Shimmer (227 971)		■	■	
Tangerine Shimmer (259 971)		■		
Metallic Effects				
Jet Nut (280 NUT)			■	
Multicolors				
Crystal & Crystal Moonlight (001 M126)		■	■	

Please note: Crystal Comet Argent Light (001 CAL) and Crystal Metallic Sunshine (001 METSH) are not suitable for swimwear because these effects are highly sensitive to seawater, sweat, and chlorine.

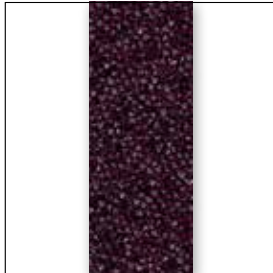
OVERVIEW OF AVAILABLE COLORS & EFFECTS

Crystal (001)



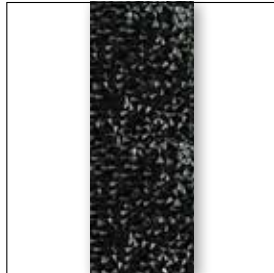
010 Transparent

Fuchsia (502)



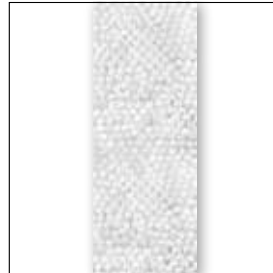
012 Black

Jet (280)



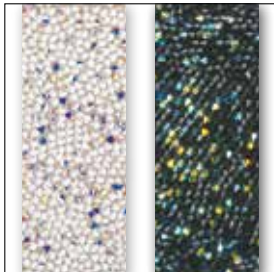
012 Black

White Alabaster (281)



022 White

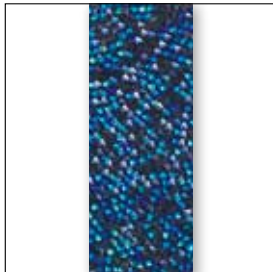
Crystal Aurore Boreale (001 AB)



010 Transparent

012 Black

Crystal Bermuda Blue (001 BBL)



012 Black

Crystal Golden Shadow (001 GSHA)



010 Transparent

Crystal Moonlight Blue (001 MOL)



010 Transparent

012 Black

Crystal Paradise Shine (001 PARSH)



010 Transparent

012 Black

Crystal Red Magma (001 REDM)



010 Transparent

012 Black

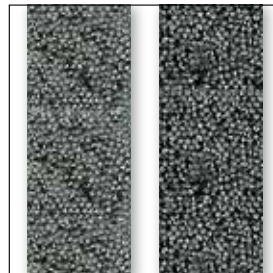
Crystal Silver Shade (001 SSHA)



010 Transparent

012 Black

Crystal Chrom (001 CHRM)



010 Transparent

012 Black

Crystal Comet Argent Light (001 CAL)



010 Transparent

Crystal Metallic Light Gold (001 MLGLD)



010 Transparent

Crystal Metallic Silver (001 METSI)



010 Transparent

012 Black

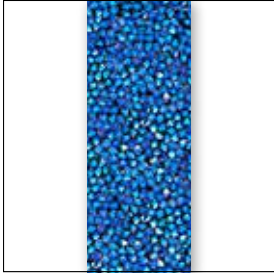
Crystal Metallic Sunshine (001 METSH)



010 Transparent

012 Black

Crystal Shimmer (001 971)



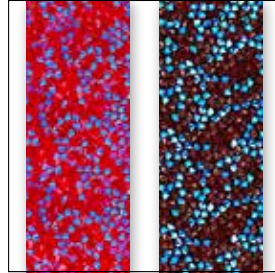
012 Black

Jet Astral Pink (280 API)



012 Black

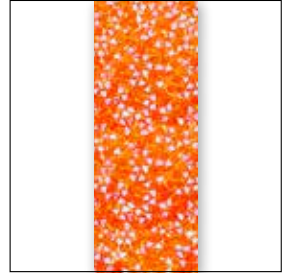
Light Siam Shimmer (227 971)



010 Transparent

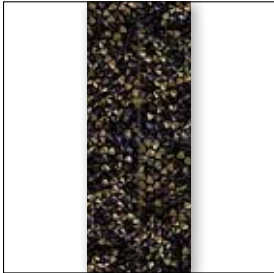
012 Black

Tangerine Shimmer (259 971)



010 Transparent

Jet Nut (280 NUT)



012 Black

Crystal & Crystal Moonlight (001 M126)

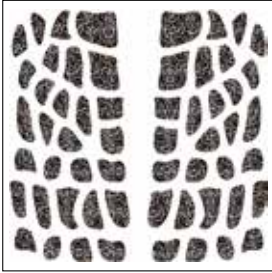


010 Transparent

012 Black

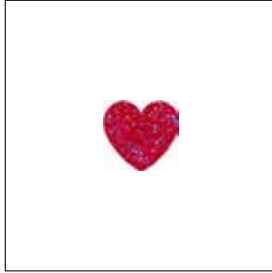
STANDARD COLLECTION

89 938



C 010-001MIGLD XS
S ~114x110
M 6 PCS **30%**

89 939



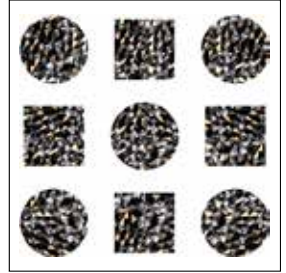
C 010-227SHIM XS
S ~10x9
M 396 PCS **100%**

89 941



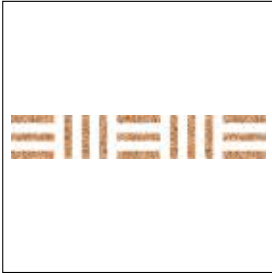
C 012-280API XS
S ~7x14
M 384 PCS **100%**

89 947



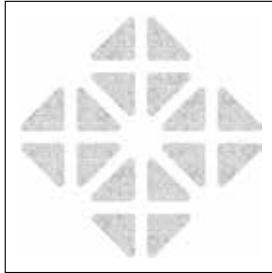
C 010-001MIGLD XS
S ~33x32
M 72 PCS **100%**

89 948



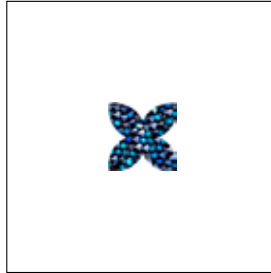
C 010-001GSHA XS
S ~112x19
M 36 PCS **30%**

89 949



C 010-001 XS
S ~58x58
M 42 PCS **55%**

89 950



C 012-001BBL XS
S ~9x9
M 396 PCS **100%**

Please note: all motifs are available in certain color/film variations (see color matrix).

SPECIAL MOTIF SERVICE

A special motif is a design created by the customer that differs to the Synthetics Standard Collection. This service opens up an abundance of customization possibilities and enables you to profit from Swarovski’s long-standing experience and

design expertise. A range of customization options for existing motifs is available (see “Customization Possibilities” below). You can also submit design sketches that meet your special needs, such as a brand image or an image for a particular sales campaign.

This will then be made up according to your specifications using Computer Aided Design, which means that adjustments can be made easily according to your needs.

Customization Possibilities for the respective product groups

	Ultrafine Rocks	Fine Rocks
Min. surface (width)	3.4 mm	4.0 mm
Min. size or effective surface:	8x8 mm (0.64 cm ²)	10x10 mm (1.00 cm ²)
Max. size:	400x330 mm	
Min. width of gaps within motifs:	3.0 mm	3.0 mm
Edges & angles less than =/< 90° need to be rounded off [diameter]	2.0 mm	2.7 mm

Ordering Process

Send your request with the drawing you wish to order to your nearest Swarovski sales office. Make sure you include all measurements for the desired motif. Please also indicate which product group your

special motif applies to. You will then receive a quotation including your article number, minimum order quantity, price, and the line drawing of your special motif in PDF format. Please contact your Swarovski sales

office again if any changes need to be made. Your special motif will be produced and delivered following your confirmation.

Please Note

Please always submit the drawing of your desired motif to represent it in the actual size you require. A small sketch, when enlarged to the desired size, will have blurred lines that will make it difficult to correctly reproduce. Pictures or drawings representing 100% size of the design or very good quality scans in JPG, BMP, or DXF format will ensure that we have clear data to work with. These can also be sent via email or on CD-ROM. If sending a sewing pattern, please include the whole pattern and not just sections. When the sketch is submitted as a hard copy by fax or email, please include a scale legend (e.g. copy/scan with a ruler next to the

drawing). This will ensure that the desired size of the motif can be identified.

It is generally possible to draw motifs with a minimum gap between the outlines. However, due to the tolerance level of the crystals being applied onto carrier film, the final Synthetic motifs may differ from the sketches or prints in relation to the motifs’ outline. Therefore the motif, and by extension, the product itself, may be subject to individual variations with each reproduction. These variations are caused by technical production-related factors. As these variations are not deemed to be defects, warranty claims are excluded

and Swarovski assumes no liability whatsoever in connection with them.

Special productions are generally offered to all our customers if these are deemed to be feasible and comply with our General Terms and Conditions. Please note that ordering of a design does not grant exclusive production of this design to the customer. If detailed information on possible tolerances is required (e.g. cavity production for metal parts), please contact your local Swarovski sales office who will enter an application request into our application database.

GRAPHIC FINE ROCKS XS & ULTRAFINE ROCKS XS

Combine our existing Graphic product (Graphic Fine Rocks & Graphic Ultrafine Rocks) with the new XS products

ARTICLE EXPLANATION

Graphic Fine Rocks XS

74 096



C 022-FP21290 001M126 XS
S ~24x80
M 40 PCS **40%**

Graphic Ultrafine Rocks XS

89 951



C 022-FP21292 001M126 XS
S ~19x64
M 60 PCS **50%**

74 096
89 951

C

S

M

Article number

Color assortment

Motif size in mm

Minimum order quantity in pieces (PCS)

FP Foil print
 GP Glass print

Ordering Example & Product Variety Explanation

74...

FP....

022

001 M126

XS

Article number

Print technique

Type of base material

Color of film

Color of crystals

Extra Small

FP Foil Print
 GP Glass Print
 FP & GP Foil Print & Glass Print

022 White
 012 Black
 010 Transparent

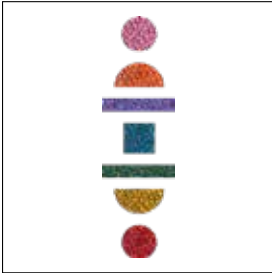
Hotfix
 I It version
 C Coldfix

Please see the respective product matrix for all available reference codes.

STANDARD COLLECTION

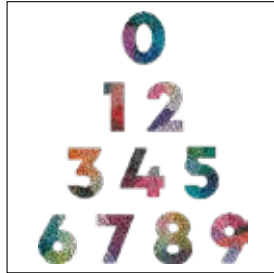
GRAPHIC FINE ROCKS XS

74 096



C 022-FP21290 001M126 XS
S ~24x80
M 40 PCS **40%**

74 097



C 022-FP21291 001M126 XS
S ~79x95
M 12 PCS **35%**

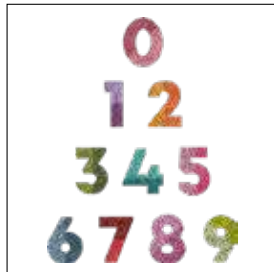
GRAPHIC ULTRAFINE ROCKS XS

89 951



C 022-FP21292 001M126 XS
S ~19x64
M 60 PCS **50%**

89 952



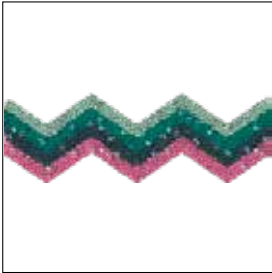
C 022-FP21293 001M126 XS
S ~63x81
M 16 PCS **40%**

Please be aware of the Graphic tolerances. Further details can be found in the General product information.

STANDARD COLLECTION

GRAPHIC FABRIC

57 415



C 022-FP21213 001M500
S ~44x15
M 98 PCS **80%**

57 416



C 022-FP21212 001M500
S ~52x15
M 84 PCS **60%**

57 417



C 022-FP21211 001M500
S ~20x36
M 60 PCS **90%**

57 418



C 022-FP21210 001M500
S ~37x22
M 84 PCS **90%**

57 419



C 022-FP21221 001M500
S ~80x15
M 52 PCS **40%**

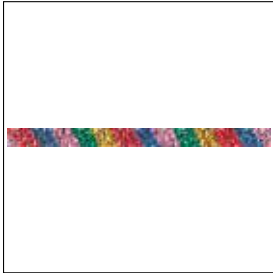
57 419



C 022-FP21222 001M500
S ~80x15
M 52 PCS **40%**

GRAPHIC FINE ROCKS

74 098



C 022-FP21214 001M126
S ~58x4
M 156 PCS **60%**

74 099



C 022-FP21215 001M126
S ~21x21
M 143 PCS **100%**

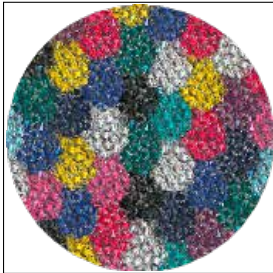
74 100



C 022-FP21216 001M126
S ~23x35
M 90 PCS **95%**

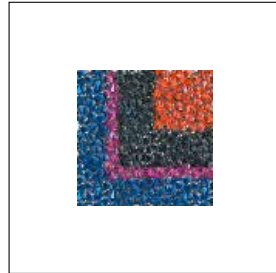
GRAPHIC ULTRAFINE ROCKS

89 953



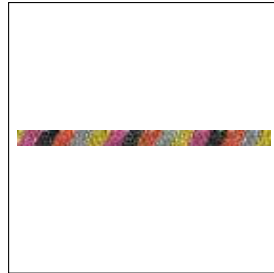
C 022-FP21220 001M126
S ~35x35
M 36 PCS **100%**

89 954



C 022-FP21218 001M126
S ~18x18
M 180 PCS **100%**

89 955



C 022-FP21217 001M126
S ~67x4
M 130 PCS **50%**

SYNTHETICS UNLIMITED

CRYSTAL FABRIC UL, CRYSTAL MEDLEY UL, CRYSTAL FINE MEDLEY UL, CRYSTAL GALUCHAT UL

Synthetics Unlimited (UL) is the crystal solution that offers a totally new and sophisticated look.

Due to a new production technology it is possible to create more precise designs with sharper edges and a more luxurious look.

This will lead to fewer gaps and will perfectly fit when inserting into cavities.

Additional rework is not necessary, which therefore saves time.

Unlimited (UL) will be offered for:

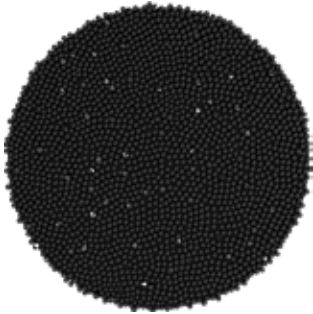
- Crystal Fabric UL
- Crystal Medley UL
- Crystal Fine Medley UL
- Crystal Galuchat UL

And could be ordered in following application versions:

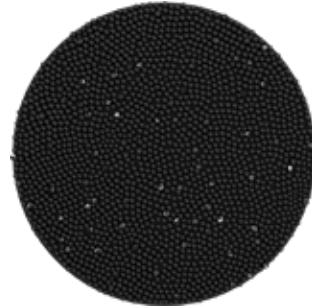
- Hotfix
- Self-Adhesive (IT)*
- Coldfix (C)

Please note that the Unlimited (UL) technique is only available for motifs (no bandings) and could not combined with Graphic prints.

Standard Crystal Fabric



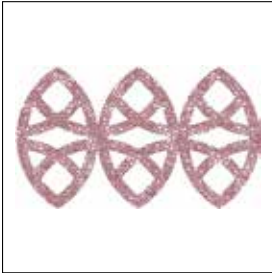
Crystal Fabric Unlimited (UL)



* IT is only available for Crystal Fabric UL and Crystal Fine Medley UL

CRYSTAL FABRIC UNLIMITED (UL)

57 411



C	010001 ANTP UL
S	~72x42
M	72 PCS 45%

57 411	C	S	M	45%
---------------	----------	----------	----------	------------

Article number	Color of crystals	Motif size in mm	Minimum order quantity in pieces (PCS)	% of actual size
----------------	-------------------	------------------	--	------------------

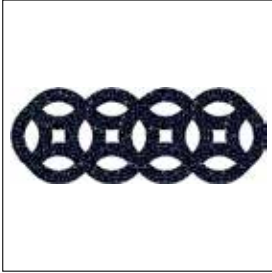
Ordering Example & Product Variety Explanation

57 411		010	001 ANTP	UL
---------------	--	------------	-----------------	-----------

Article number	Type of base material	Color of film	Color of crystals	Unlimited
	Hotfix	010 Transparent	Please see the relevant product matrix for all available reference codes.	
	C Coldfix	012 Black		
	I It version			

CRYSTAL FABRIC UNLIMITED (UL) MOTIFS

57 409



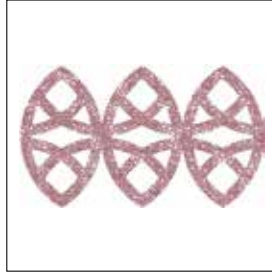
C	012-280HEM UL
S	~56x21
M	150 PCS 60%

57 410



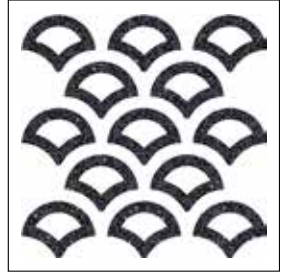
C	010-001GSHA UL
S	~234x28
M	32 PCS 15%

57 411



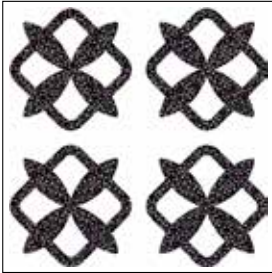
C	010-001ANTP UL
S	~72x42
M	72 PCS 45%

57 412



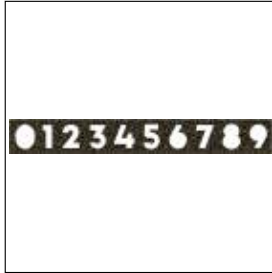
C	012-001PARSH UL
S	~65x64
M	52 PCS 50%

57 413



C	012-001HEL UL
S	~76x76
M	33 PCS 45%

57 414



C	012-001DOR UL
S	~174x22
M	20 PCS 20%

Please note: all motifs are available in certain color/film variations (see color matrix).

CRYSTAL GALUCHAT UNLIMITED (UL)

89 823



C	012001COP/001COP/001COP UL
S	~50x28
M	50 PCS 70%

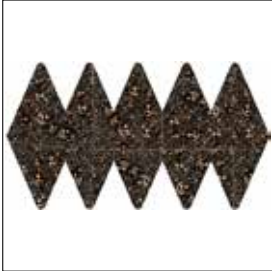
89 823	C	S	M	70%
Article number	Color of crystals	Motif size in mm	Minimum order quantity in pieces (PCS)	% of actual size

Ordering Example & Product Variety Explanation

89 823	012	001 COP	001 COP	001 COP	UL
Article number	Color of film	Crystal color corresponding to the large crystal balls (3.5 mm)	Crystal color corresponding to the small crystal balls (2.5 mm)	Crystal color corresponding to the round uncut elements	Unlimited
	010 Transparent 012 Black				
<p>Please refer to the relevant product matrix for all available reference codes.</p> <p>It is possible to order two-color motifs: one color for both sizes of crystal ball (3.5 mm and 2.5 mm) and one color for the round uncut crystals. It is not possible to mix three different colors - both crystal balls must be the same color.</p> <p>You can choose from the Crystal Galuchat standard effects (see color matrix).</p>					

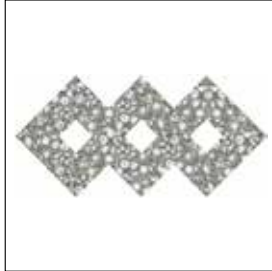
CRYSTAL GALUCHAT UNLIMITED (UL) MOTIFS

89 823



C	012-001COP/001COP/001COP UL
S	~50x28
M	50 PCS 70%

89 824



C	012-001CAL/001CAL/001CAL UL
S	~74x35
M	36 PCS 45%

Please note: all motifs are available in certain color/film variations (see color matrix).

CRYSTAL MEDLEY UNLIMITED (UL)

73 027



C	010-001 DOR/001 DOR/001 DOR UL
S	~60x26
M	45 PCS 55%

73 027	S	M	55%
Article number	Motif size in mm	Minimum order quantity in pieces (PCS)	% of actual size

Ordering Example & Product Variety Explanation

73 027	010	001 DOR	001 DOR	001 DOR	UL
Article number	Color of film 010 Transparent 012 Black	Crystal color corresponding to the large double-pointed Chatons	Crystal color corresponding to the small double-pointed Chatons	Crystal color corresponding to the round uncut elements	Unlimited
<p>Please see the relevant product matrix for all available reference codes.</p> <p>It is possible to order two-color motifs: one color for both sizes of double-pointed Chaton (PP14 and PP29) and one color for the round uncut elements. It is not possible to mix three different colors - both double-pointed Chatons must be the same color.</p> <p>You can choose from the Crystal Medley standard effects (see color matrix).</p>					

CRYSTAL MEDLEY UNLIMITED (UL) MOTIFS

73 027



C	010-001DOR/001DOR/001DOR UL
S	~60x26
M	45 PCS 55%

73 028



C	012-001MLGLD/001MLGLD/ 001MLGLD UL
S	~61x33
M	40 PCS 55%

Please note: all motifs are available in certain color/film variations (see color matrix).

CRYSTAL FINE MEDLEY UNLIMITED (UL)

73 217



C	012-001 GSHA/001 GSHA UL
S	~81x32
M	32 PCS 40%

73 217	S	M	40%
Article number	Motif size in mm	Minimum order quantity in pieces (PCS)	% of actual size

Ordering Example & Product Variety Explanation

73 217	012	001 GSHA	001 GSHA	UL
Article number	Type of base material	Color of film	Crystal color corresponds with the pp14 double-pointed chatons.	Crystal color corresponding to the round uncut elements
	Hoifix	010 Transparent 012 Black	<p>Please see the relevant product matrix for all available reference codes.</p> <p>It is possible to order two-color motifs. Crystal balls and pp14 double-pointed Chatons.</p> <p>You can choose from the Crystal Fine Medley standard colors and effects (see color matrix).</p>	Unlimited

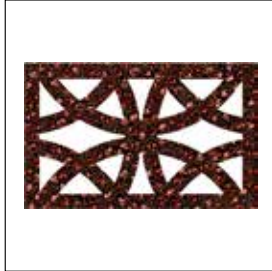
CRYSTAL FINE MEDLEY UNLIMITED (UL) MOTIFS

73 217



C	012-001GSHA/001GSHA UL
S	~81x32
M	32 PCS 40%

73 218



C	012-001REDM/001REDM UL
S	~103x64
M	15 PCS 30%

Please note: all motifs are available in certain color/film variations (see color matrix).

SPECIAL MOTIF SERVICE

A special motif is a design created by the customer that differs to the Synthetics Standard Collection. This service opens up an abundance of customization possibilities and enables you to profit from Swarovski’s long-standing experience and

design expertise. A range of customization options for existing motifs is available (see “Customization Possibilities” below). You can also submit design sketches that meet your special needs, such as a brand image or an image for a particular sales campaign.

This will then be made up according to your specifications using Computer Aided Design, which means that adjustments can be made easily according to your needs.

Customization Possibilities for the respective product groups

	Fabric	Galuchat	Medley	Fine Medley
Min. surface (width)	3.0 mm	9.0 mm	9.0 mm	7.0 mm
Min. size or effective surface:	10x10 mm (1.0 cm ²)	19x19 mm (3.61 cm ²)	19x19 mm (3.61 cm ²)	15x15 mm (2.25 cm ²)
Max. size:	400x330 mm			
Min. width of gaps within motifs:	3.0 mm	6.0 mm	6.0 mm	6.0 mm
Edges & angles less than =/< 90° need to be rounded off [diameter]	1.5 mm	1.5 mm	1.5 mm	1.5 mm

Ordering Process

Send your request with the drawing you wish to order to your nearest Swarovski sales office. Make sure you include all measurements for the desired motif. Please also indicate which product group your

special motif applies to. You will then receive a quotation including your article number, minimum order quantity, price, and the line drawing of your special motif in PDF format. Please contact your Swarovski sales

office again if any changes need to be made. Your special motif will be produced and delivered following your confirmation.

Please Note

Please always submit the drawing of your desired motif to represent it in the actual size you require. A small sketch, when enlarged to the desired size, will have blurred lines that will make it difficult to correctly reproduce. Pictures or drawings representing 100% size of the design or very good quality scans in JPG, BMP, or DXF format will ensure that we have clear data to work with. These can also be sent via email or on CD-ROM. If sending a sewing pattern, please include the whole pattern and not just sections. When the sketch is submitted as a hard copy by fax or email, please include a scale legend (e.g. copy/scan with a ruler next to the

drawing). This will ensure that the desired size of the motif can be identified.

It is generally possible to draw motifs with a minimum gap between the outlines. However, due to the tolerance level of the crystals being applied onto carrier film, the final Synthetic motifs may differ from the sketches or prints in relation to the motifs’ outline. Therefore the motif, and by extension, the product itself, may be subject to individual variations with each reproduction. These variations are caused by technical production-related factors. As these variations are not deemed to be defects, warranty claims are excluded

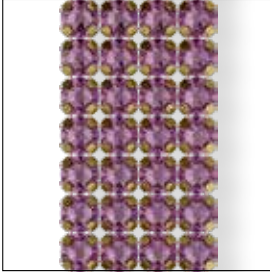
and Swarovski assumes no liability whatsoever in connection with them.

Special productions are generally offered to all our customers if these are deemed to be feasible and comply with our General Terms and Conditions. Please note that ordering of a design does not grant exclusive production of this design to the customer. If detailed information on possible tolerances is required (e.g. cavity production for metal parts), please contact your local Swarovski sales office who will enter an application request into our application database.

METAL TRIMMINGS

FLAT BACK BANDINGS

55 000

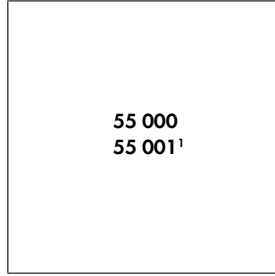


R 001-024
SS SS 20
M 10 M **100%**

55 001¹



R 001
SS SS 20
M 10 M **100%**



Color of Thread / Net-edge	Color of Casing
012 / 112 / 212 Black	081 Gold
022 / 122 / 222 White	082 Silver
	086 Gummetal
	088 Stainless Steel

Colors	
Plain Colors	
● Iris (219)	NEW!
Crystal Effects	
Crystal Lacquer^{PRO} Effects	
Crystal Electric DeLite Lacquer^{PRO} Effects	
● Crystal Electric Blue DeLite (001 L134D)	NEW!
● Crystal Electric Green DeLite (001 L135D)	NEW!
● Crystal Electric Orange DeLite (001 L136D)	NEW!
● Crystal Electric Pink DeLite (001 L137D)	NEW!
● Crystal Electric Yellow DeLite (001 L138D)	NEW!
● Crystal Electric White DeLite (001 L139D)	NEW!
● Crystal Electric Violet DeLite (001 L148D)	NEW!

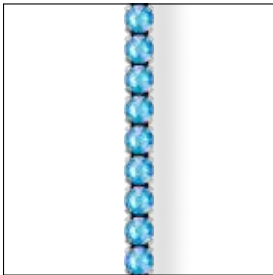
¹ Art. 55 001 is not available with net-edge. When ordering one row with net-edge, art. 55 000 should be used.

55 300 Flat Back Banding



R	001-024
SS	SS 16
M	10 M 100%

55 301¹ Flat Back Banding



R	001
SS	SS 16
M	10 M 100%

55 300 55 301¹	Color of Thread / Net-edge	012 / 112 / 212 Black	022 / 122 / 222 White	Color of Coating	081 Gold	082 Silver	086 Gunmetal
Colors							
Plain Colors							
Iris (219)	NEW!	■	■	■	■	■	■
Crystal Effects							
Crystal Lacquer^{PRO} Effects							
Crystal Electric DeLite Lacquer^{PRO} Effects							
Crystal Electric Blue DeLite (001 1134D)	NEW!	■	■	■	■	■	■
Crystal Electric Green DeLite (001 1135D)	NEW!	■	■	■	■	■	■
Crystal Electric Orange DeLite (001 1136D)	NEW!	■	■	■	■	■	■
Crystal Electric Pink DeLite (001 1137D)	NEW!	■	■	■	■	■	■
Crystal Electric Yellow DeLite (001 1138D)	NEW!	■	■	■	■	■	■
Crystal Electric White DeLite (001 1139D)	NEW!	■	■	■	■	■	■
Crystal Electric Violet DeLite (001 1148D)	NEW!	■	■	■	■	■	■

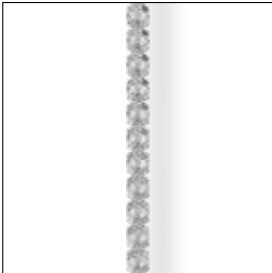
¹ Art. 55 301 is not available with net-edge. When ordering one row with net-edge, art. 55 300 should be used.

55 500

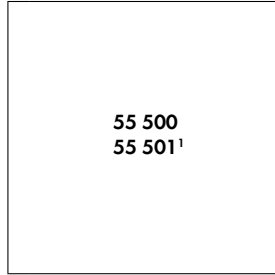


R 001-024
 SS SS 12
 M 10 M 100%

55 501²



R 001
 SS SS 12
 M 10 M 100%



Color of Thread / Net-edge	012 / 112 / 212 Black
	022 / 122 / 222 White
Color of Coating	081 Gold
	082 Silver
	086 Gunmetal

Colors

Plain Colors

Iris (219) NEW!

Crystal Effects

Crystal Lacquer^{PRO} Effects

Crystal Electric DeLite Lacquer^{PRO} Effects

- Crystal Electric Blue DeLite (001 L134D) NEW!
- Crystal Electric Green DeLite (001 L135D) NEW!
- Crystal Electric Orange DeLite (001 L136D) NEW!
- Crystal Electric Pink DeLite (001 L137D) NEW!
- Crystal Electric Yellow DeLite (001 L138D) NEW!
- Crystal Electric White DeLite (001 L139D) NEW!
- Crystal Electric Violet DeLite (001 L148D) NEW!

NEW!	■	■	■	■	■
NEW!	■	■	■	■	■
NEW!	■	■	■	■	■
NEW!	■	■	■	■	■
NEW!	■	■	■	■	■
NEW!	■	■	■	■	■
NEW!	■	■	■	■	■

¹ Art. 55 501 is not available with net-edge. When ordering one row with net-edge, art. 55 500 should be used.

METAL COMPONENTS - RIVETS

53 001 Rivets



SS SS 29
M 500 PCS **130%**

<p>53 001 ¹</p> <p>53 005 ¹</p> <p>53 006 ¹</p>	<p>Color of Casing</p> <p>081 Gold</p> <p>082 Silver</p> <p>086 Gummetal</p> <p>088 Stainless Steel</p>
<p>Colors</p> <p>Plain Colors</p> <p>● Iris [219]</p>	
<p>NEW!</p>	

53 005 Rivets



SS SS 34
M 500 PCS **130%**

53 006 Rivets



SS SS 39
M 300 PCS **130%**

53 007 Back Part



M 1,000 PCS **100%**

53 009 Back Part



M 1,000 PCS **100%**

¹ For corresponding Back Parts please refer to the chapter "Metal Trimmings" (page 681) in Crystal Collection 2018

METAL COMPONENTS - XIRIUS FLAT BACK RIVETS

56 101 Xirius Flat Back Rivets



SS SS 16
M 1,440 PCS 120%

56 102 Xirius Flat Back Rivets



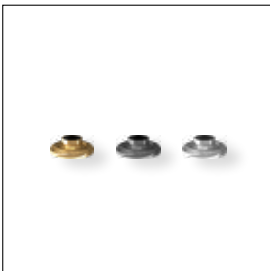
SS SS 20
M 1,440 PCS 120%

56 103 Xirius Flat Back Rivets



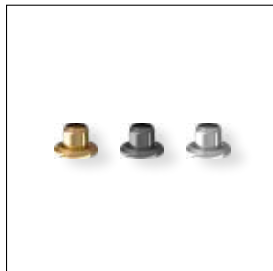
SS SS 34
M 144 PCS 120%

56 198 Back Part¹

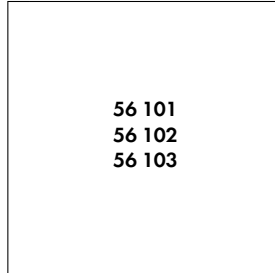


M 1,440 PCS 120%

56 199 Back Part²



M 144 PCS 120%



Color of Casing	081 Gold	086 Gunmetal	095 Palladium
NEW!	■	■	■
NEW!	■	■	■
NEW!	■	■	■
NEW!	■	■	■
NEW!	■	■	■
NEW!	■	■	■
NEW!	■	■	■
NEW!	■	■	■
NEW!	■	■	■
NEW!	■	■	■
NEW!	■	■	■
NEW!	■	■	■
NEW!	■	■	■
NEW!	■	■	■
NEW!	■	■	■
NEW!	■	■	■
NEW!	■	■	■
NEW!	■	■	■
NEW!	■	■	■
NEW!	■	■	■

Colors

Plain Colors

- Emerald F (205)
- Iris F (219)
- Light Rose F (223)
- Light Siam F (227)
- Sapphire F (206)
- Silk F (391)

Crystal Effects

Transparent Effects

- Crystal Silver Night F (001 SINI)
- Crystal Volcano F (001 VOL)

Crystal Effects

Crystal Lacquer^{PRO} Effects

Crystal Electric DeLite Lacquer^{PRO} Effects

- Crystal Electric Blue DeLite (001 L134D)
- Crystal Electric Green DeLite (001 L135D)
- Crystal Electric Orange DeLite (001 L136D)
- Crystal Electric Pink DeLite (001 L137D)
- Crystal Electric Yellow DeLite (001 L138D)
- Crystal Electric White DeLite (001 L139D)
- Crystal Electric Violet DeLite (001 L148D)

¹ for Art. 56 101 and 56 102
² for Art. 56 103

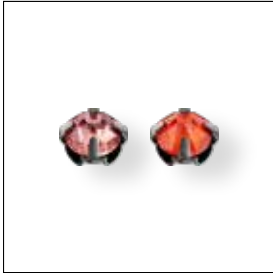
METAL COMPONENTS - ROSE MONTÉES

53 100 Rose Montées



SS SS 12
M 1,440 PCS **200%**

53 102 Rose Montées

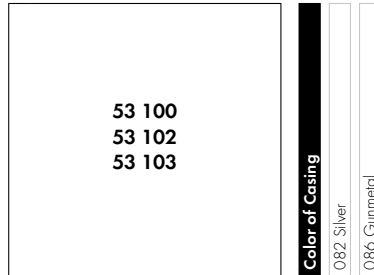


SS SS 16
M 1,440 PCS **200%**

53 103 Rose Montées



SS SS 30
M 720 PCS **200%**



Color of Casing

082 Silver

086 Gunmetal

Colors

Plain Colors

Iris F (219) **NEW!**

Crystal Effects

Crystal Lacquer^{PRO} Effects

Crystal Electric Lacquer^{PRO} Effects *

Crystal Electric Blue (001 1134S) **NEW!**

Crystal Electric Green (001 1135S) **NEW!**

Crystal Electric Orange (001 1136S) **NEW!**

Crystal Electric Pink (001 1137S) **NEW!**

Crystal Electric Violet (001 1148S) **NEW!**

Crystal Electric White (001 1139S) **NEW!**

Crystal Electric Yellow (001 1138S) **NEW!**

Crystal Electric DeLite Lacquer^{PRO} Effects

Crystal Electric Blue DeLite (001 1134D) **NEW!**

Crystal Electric Green DeLite (001 1135D) **NEW!**

Crystal Electric Orange DeLite (001 1136D) **NEW!**

Crystal Electric Pink DeLite (001 1137D) **NEW!**

Crystal Electric Yellow DeLite (001 1138D) **NEW!**

Crystal Electric White DeLite (001 1139D) **NEW!**

Crystal Electric Violet DeLite (001 1148D) **NEW!**

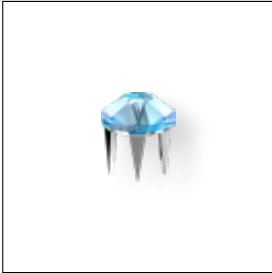
METAL COMPONENTS - ROSE PINS

53 301 Rose Pins



SS SS 10
M 1,440 PCS 250%

53 302 Rose Pins



SS SS 16
M 1,440 PCS 250%

53 303 Rose Pins

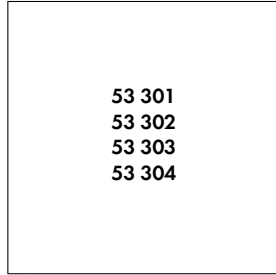


SS SS 20
M 720 PCS 250%

53 304 Rose Pins



SS SS 34
M 288 PCS 250%



Color of Casing
088 Stainless Steel

- Colors**
- Plain Colors**
- Iris F (219) NEW!
- Crystal Effects**
- Crystal Lacquer^{PRO} Effects**
- Crystal Electric DeLite Lacquer^{PRO} Effects**
- Crystal Electric Blue DeLite (001 L134D) NEW!
- Crystal Electric Green DeLite (001 L135D) NEW!
- Crystal Electric Orange DeLite (001 L136D) NEW!
- Crystal Electric Pink DeLite (001 L137D) NEW!
- Crystal Electric Yellow DeLite (001 L138D) NEW!
- Crystal Electric Violet DeLite (001 L148D) NEW!

METAL COMPONENTS - 3D STUDS - INSPIRED BY IRIS VAN HERPEN

54 001 3D Studs 4 mm



SS SS 16
M 1000 PCS **200%**

54 002 3D Studs 6 mm



SS SS 16
M 1000 PCS **200%**

54 003 3D Studs 8 mm



SS SS 16
M 500 PCS **200%**

54 004 3D Studs Back Part



M 500 PCS **200%**

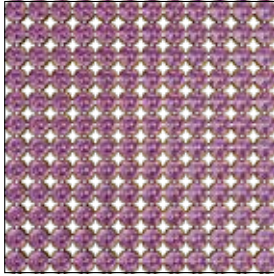
54 001
54 002
54 003

Color of Casing	081 Gold	082 Silver	086 Gunmetal	088 Stainless Steel
Colors				
Plain Colors				
● Iris F (219)	NEW!			
Crystal Effects				
Crystal Lacquer^{PRO} Effects				
Crystal Electric DeLite Lacquer^{PRO} Effects				
● Crystal Electric Blue DeLite (001 1134D)	NEW!			
● Crystal Electric Green DeLite (001 1135D)	NEW!			
● Crystal Electric Orange DeLite (001 1136D)	NEW!			
● Crystal Electric Pink DeLite (001 1137D)	NEW!			
● Crystal Electric Yellow DeLite (001 1138D)	NEW!			
● Crystal Electric White DeLite (001 1139D)	NEW!			
● Crystal Electric Violet DeLite (001 1148D)	NEW!			

CRYSTAL MESH

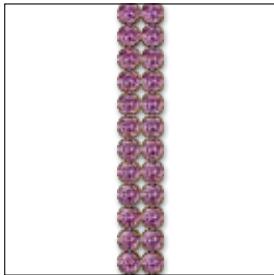
CRYSTAL MESH STANDARD

40 000

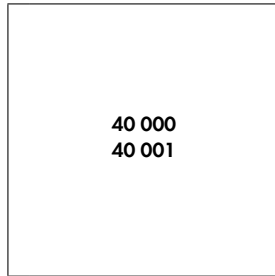


SH 100
S ~500x200
SS PP 21
M 1 SH **100%**

40 001



R 002-033
SS PP 21
M 10 M **100%**



Colors

Plain Colors

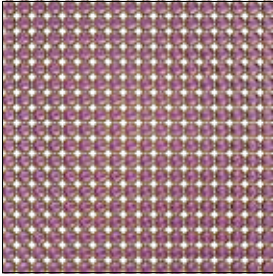
Iris (219)

- Color of Caseing**
- 012 Black
- 081 Gold
- 082 Silver
- 088 Stainless Steel

NEW!

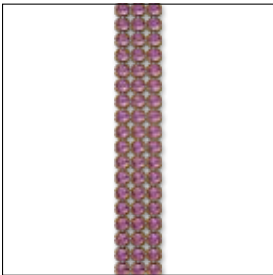
CRYSTAL FINE MESH

40 600

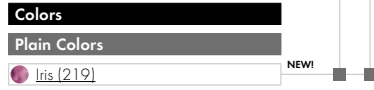
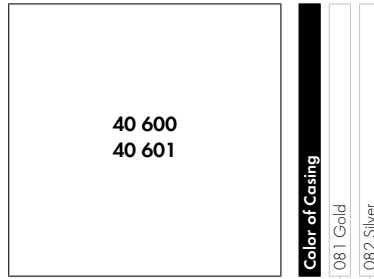


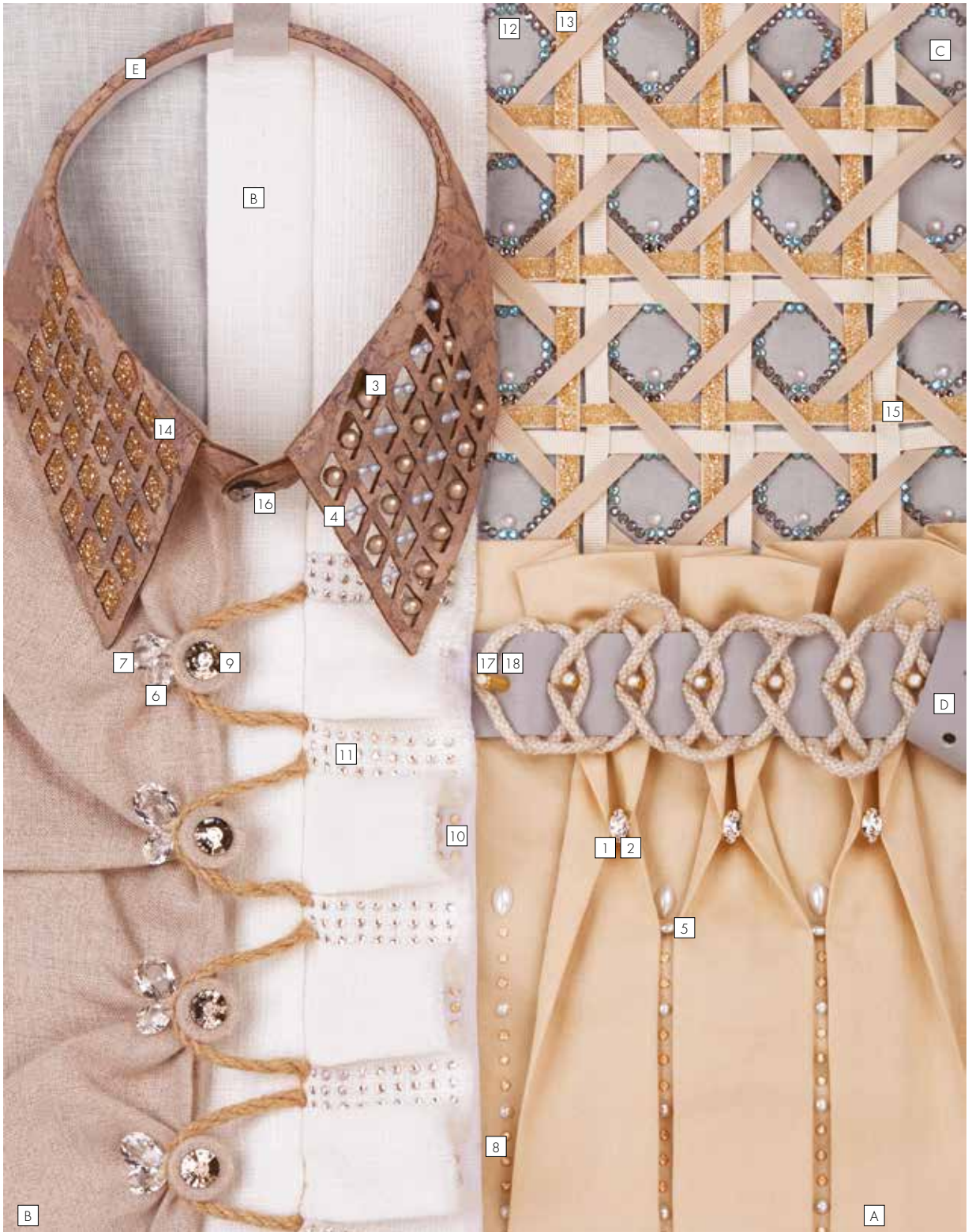
SH 100
S ~500x200
SS PP 9
M 1 SH **100%**

40 601



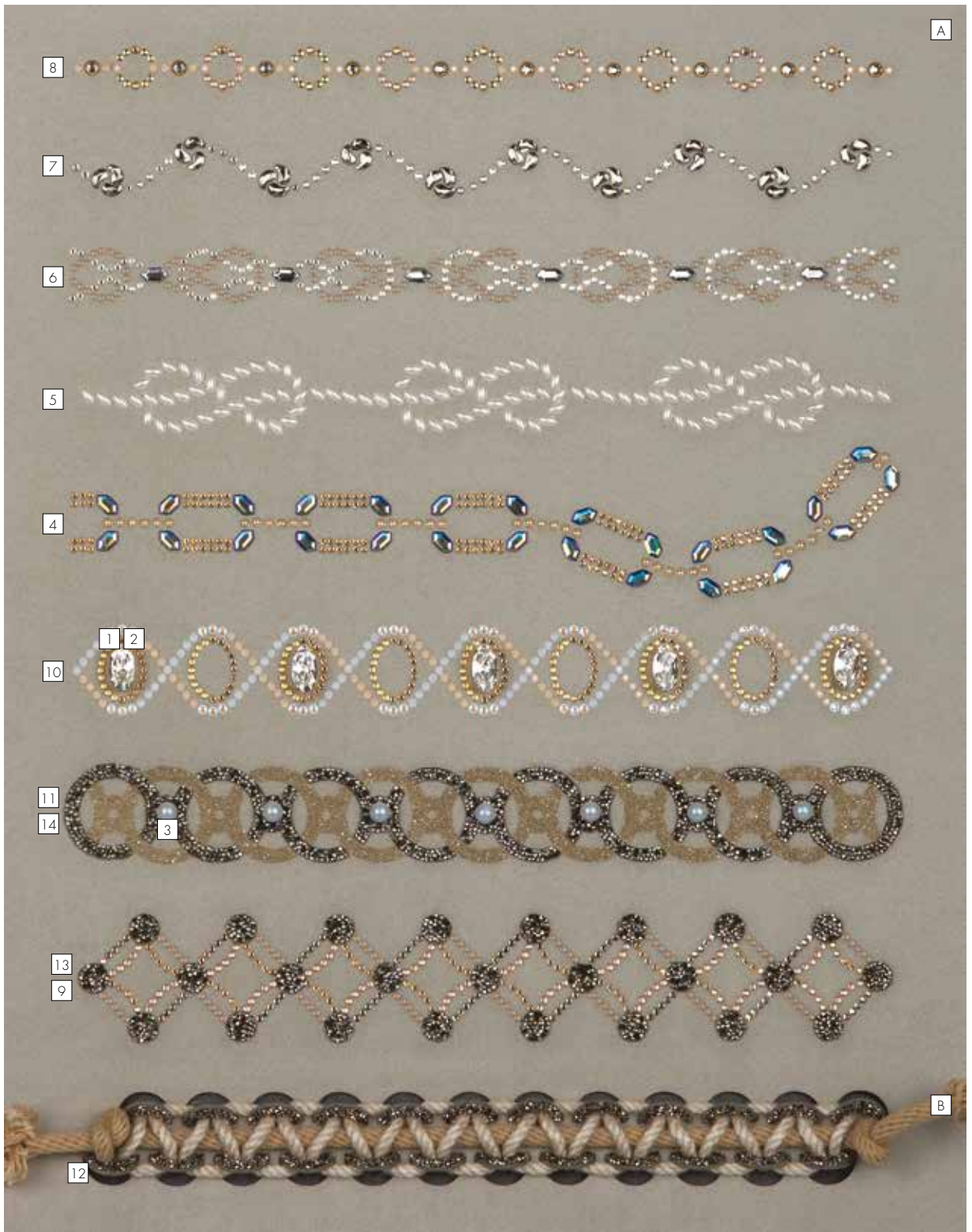
R 003-033
SS PP 9
M 10 M **100%**





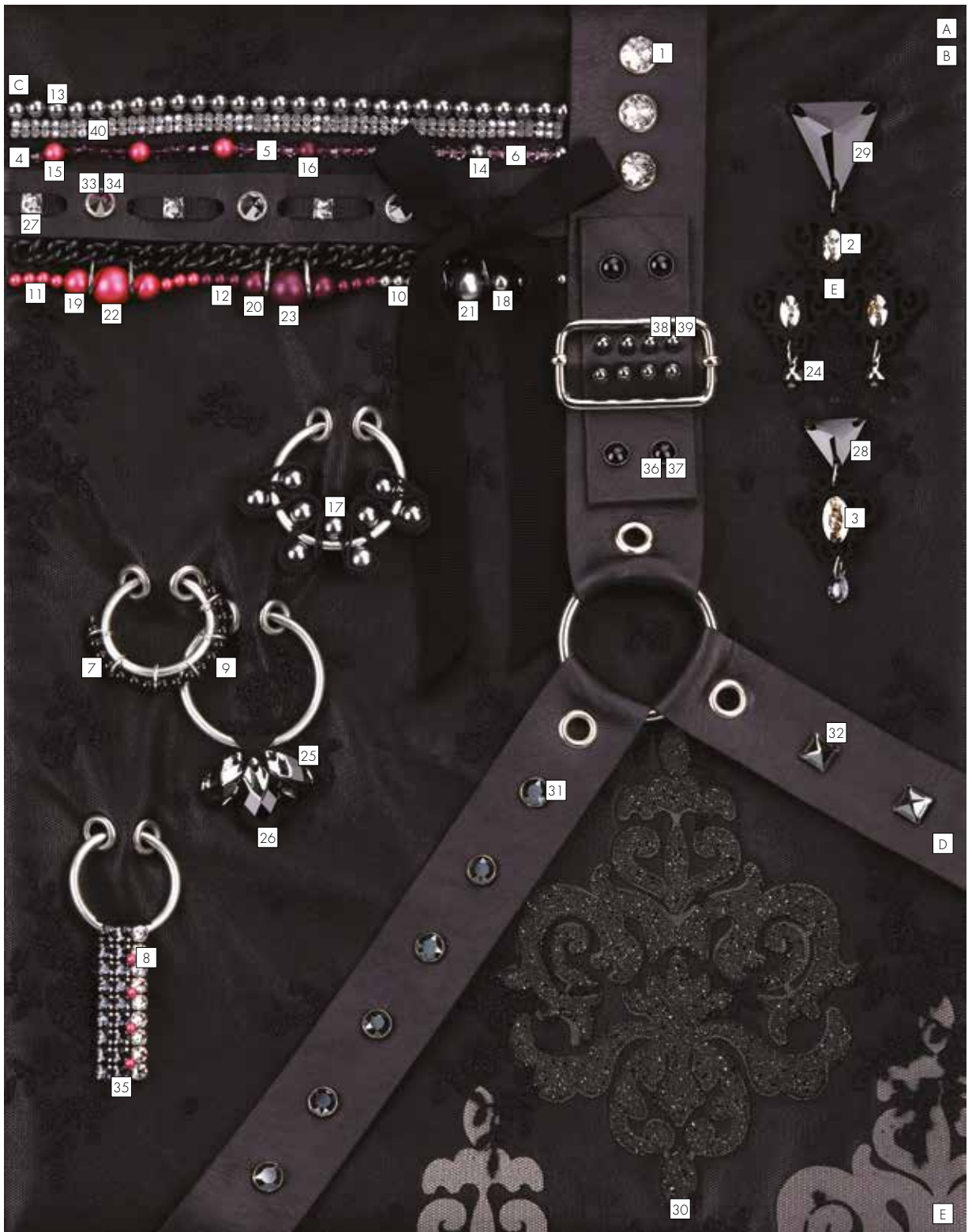
Nr.	Crystal
1	4162 10x5.5 mm 001 F NEW
2	4162/S 10x5.5 mm 3PH2O3 NEW
3	5810 6 mm 001 459
4	5824 4 mm 001 2026 NEW
5	5824 4 mm 001 650
6	6433 11.5 mm 001 NEW
7	6433 16 mm 001 NEW
8	925639 Transfer Special Motif (001191/001191/001L106S)
9	925642 Transfer Special Motif (001ROSPA)
10	925643 Transfer Special Motif (001L106S)
11	925644 Transfer Special Motif (001L139D) NEW
12	925645 Transfer Special Motif (001954/001L111S/ 001L147D/284)
13	899318 Crystal Ultrafine Rocks Special Motif (010 001GSHA)
14	899319 Crystal Ultrafine Rocks Special Motif (010 001GSHA)
15	623138 Crystal Fabric Unlimited Special Motif (010 001GSHA UL) NEW
16	3035 10 mm 001 SAT F
17	54003 081 001L139S
18	54004 082

Nr.	Material Information
A	Cotton Mix
B	Linen
C	Cotton-Linen Mix
D	Leather
E	Cork



Nr.	Crystal
1	4162 14x7.5 mm 001 F NEW
2	4162/S 14x7.5 mm 3PH2O3 NEW
3	5810 6 mm 001 2026 NEW
4	13428 001GSHA/001GSHA/001AB NEW
5	13429 001650
6	13430 R1019/001MOL/001 NEW
7	13431 001SSHA/001SSHA/001SSHA/001SSHA/ 001SSHA
8	13432 001GR/080/091/001GSHA/001L106S
9	926054 Transfer Special Motif (090/R1019/284/ 001GSHA)
10	926055 Transfer Special Motif (081/001GSHA/ 001L139S/001L106S/001L129D)
11	57410 010 001GSHA UL NEW
12	899426 Crystal Ultrafine Rocks XS Special Motif (010 001MLGLD XS) NEW
13	899427 Crystal Ultrafine Rocks XS Special Motif (010 001MLGLD XS) NEW
14	899428 Crystal Ultrafine Rocks Special Motif (010 001MLGLD)

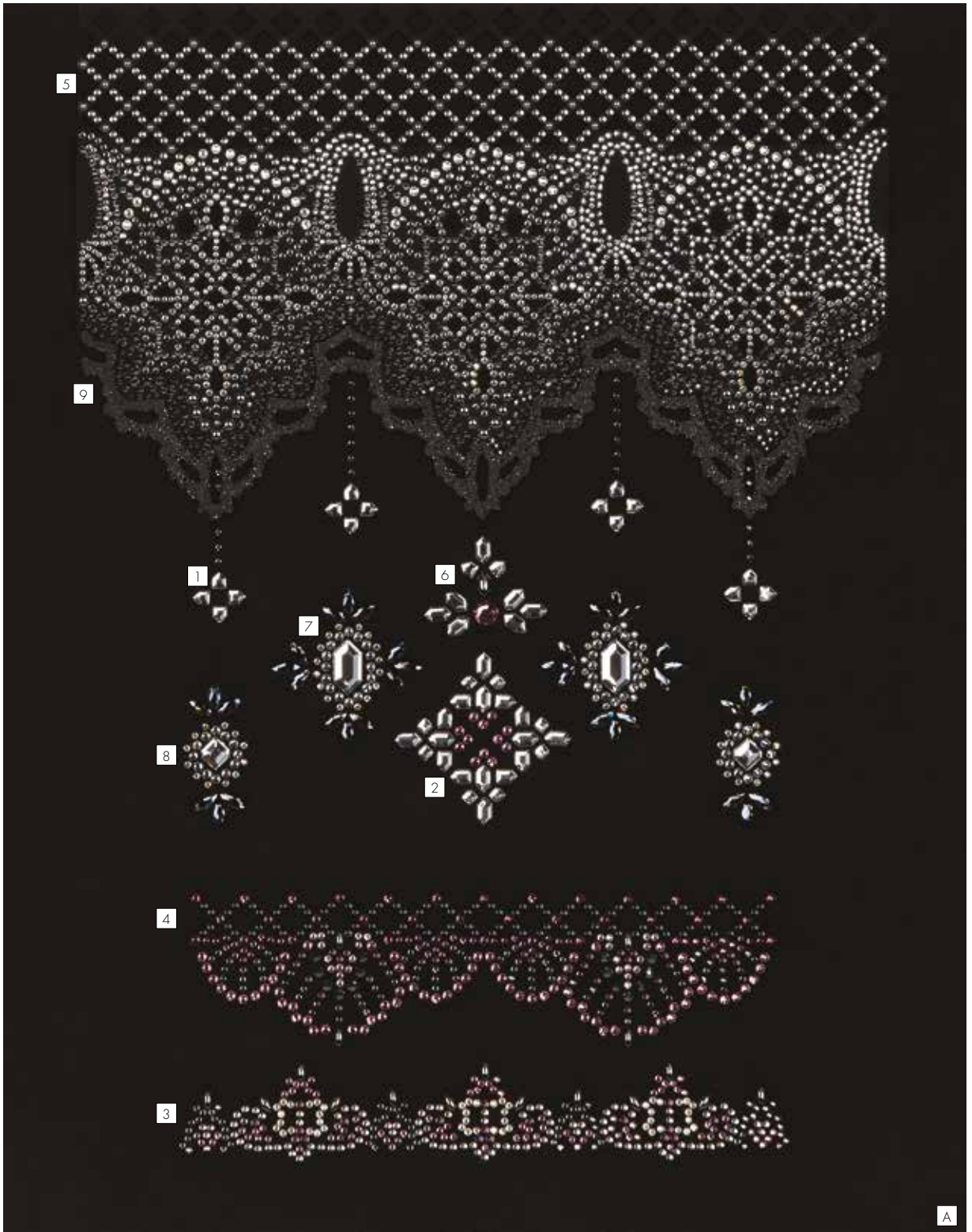
Nr.	Material Information
A	Alcantara ©
B	Cotton Linen Mix



Nr.	Crystal
1	1400 10 mm 001 F NEW
2	4162 10x5.5 mm 001 SSHA F NEW
3	4162 14x7.5 mm 001 SSHA F NEW
4	5328 4 mm 204
5	5328 4 mm 212
6	5328 4 mm 219 NEW
7	5810 2 mm 001 335
8	5810 3 mm 001 2018
9	5810 4 mm 001 335
10	5810 4 mm 001 617
11	5810 4 mm 001 2018
12	5810 4 mm 001 2019
13	5810 6 mm 001 617
14	5810 6 mm 001 617
15	5810 6 mm 001 2018
16	5810 6 mm 001 2019
17	5810 8 mm 001 298
18	5810 8 mm 001 617
19	5810 8 mm 001 2018
20	5810 8 mm 001 2019
21	5810 12 mm 001 617
22	5810 12 mm 001 2018
23	5810 12 mm 001 2019
24	6433 9 mm 001 SINI NEW
25	6565 18 mm 215 ITCHZ
26	6565 22 mm 280 ITCHZ
27	2419 6x6 mm 001 M HF

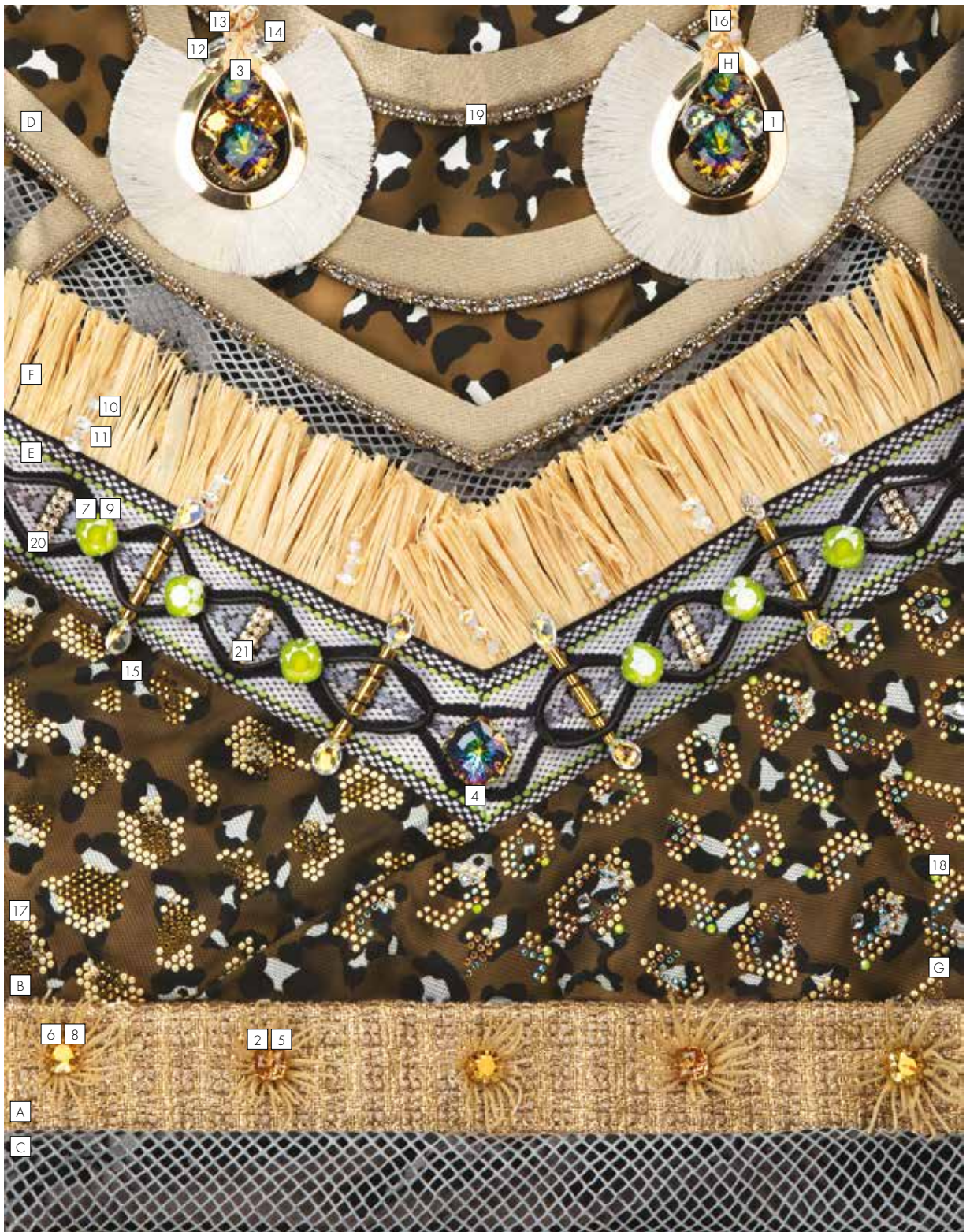
Nr.	Crystal
28	3270 16 mm 280
29	3271 25x28.7 mm 280
30	623192 Crystal Fabric Unlimited Special Motif (012 280HEM UL) NEW
31	53006 086 280HEM
32	53503 086 280HEM
33	53011 082 001CHRM V
34	53009 088
35	104351 Flatback Banding Special Motif (082/253/001SSHA)
36	56107 086 280
37	56199 086
38	54001 086 280(C)HEM
39	54004 086
40	40001/002 082 001 L111S

Nr.	Material Information
A	Tulle Lace
B	Technical Fabric
C	Vegan Leather
D	Leather
E	Alcantara ©



Nr.	Crystal
1	13425 253/001 NEW
2	13426 219/001/001/001 NEW
3	13427 096/R4007-280HEM/219/253/001 MOL NEW
4	926176 Transfer Special Motif (R9005/R4007-280HEM/ 253/204/212/219/204/280HEM) NEW
5	926177 Transfer Special Motif (096-001617/280HEM/ 001/280HEM/001SINI/001LTCH/001SSHA/280HEM/ 280HEM/001SSHA)
6	926178 Transfer Special Motif (280HEM/219/001/001) NEW
7	926179 Transfer Special Motif (001SSHA/001SINI/253/001) NEW
8	926180 Transfer Special Motif (001SSHA/001SINI/253/001) NEW
9	623150 Crystal Fabric Unlimited Special Motif (012 280HEM UL) NEW

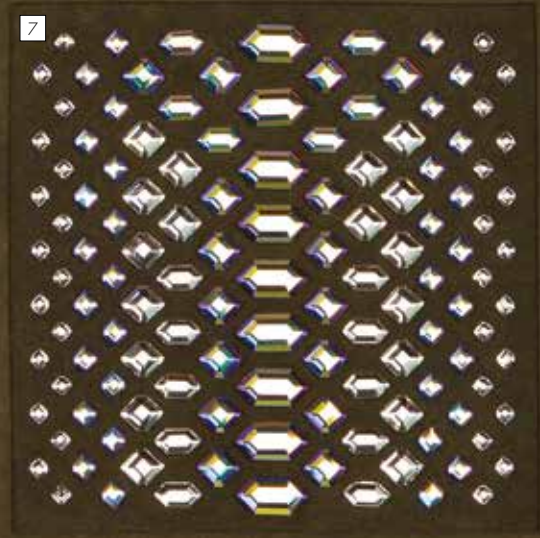
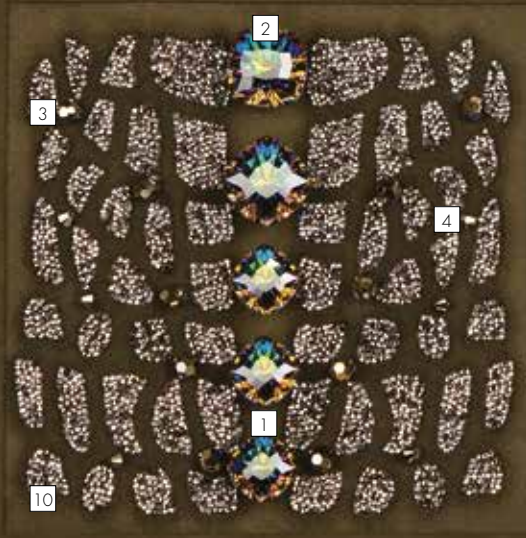
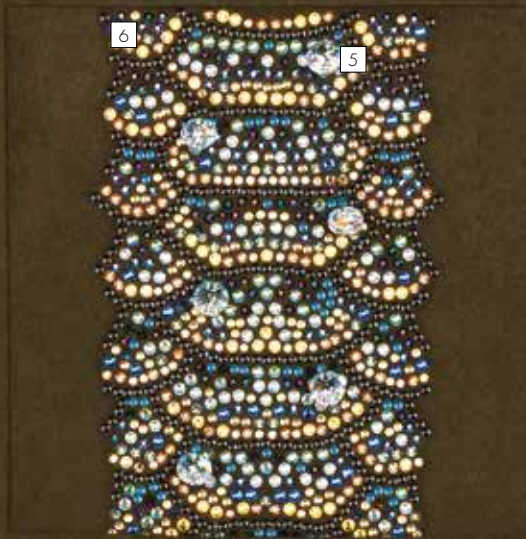
Nr.	Material Information
A	Alcantara ©



Nr.	Crystal
1	1400 10 mm 001 PARSH F NEW
2	4460 10 mm 246 F NEW
3	4460 14 mm 001 VM F NEW
4	4460 18 mm 001 VM F NEW
5	4460/S 10 mm 3PH2O3 NEW
6	4470 10 mm 001 METSH F
7	4470 12 mm 001 L125S
8	4470/S 10 mm 3PH2O3
9	4470/S 12 mm 3PH2OH
10	5000 4 mm 234 SHIM NEW
11	6428 6 mm 001 SHIM NEW
12	6433 9 mm 001 NEW
13	6433 9 mm 001 GSHA NEW
14	6433 11.5 mm 001 NEW
15	6433 11.5 mm 001 AB NEW
16	6433 16 mm 001 GSHA NEW
17	925440 Transfer Special Motif (081/001DOR)
18	925441 Transfer Special Motif (081/001METSH/ 360SHIM/001L125S/001) NEW
19	715763 Crystal Fine Rocks Special Motif (010/001M103)
20	40001/002 081 391
21	40001/002 082 001GSHA F

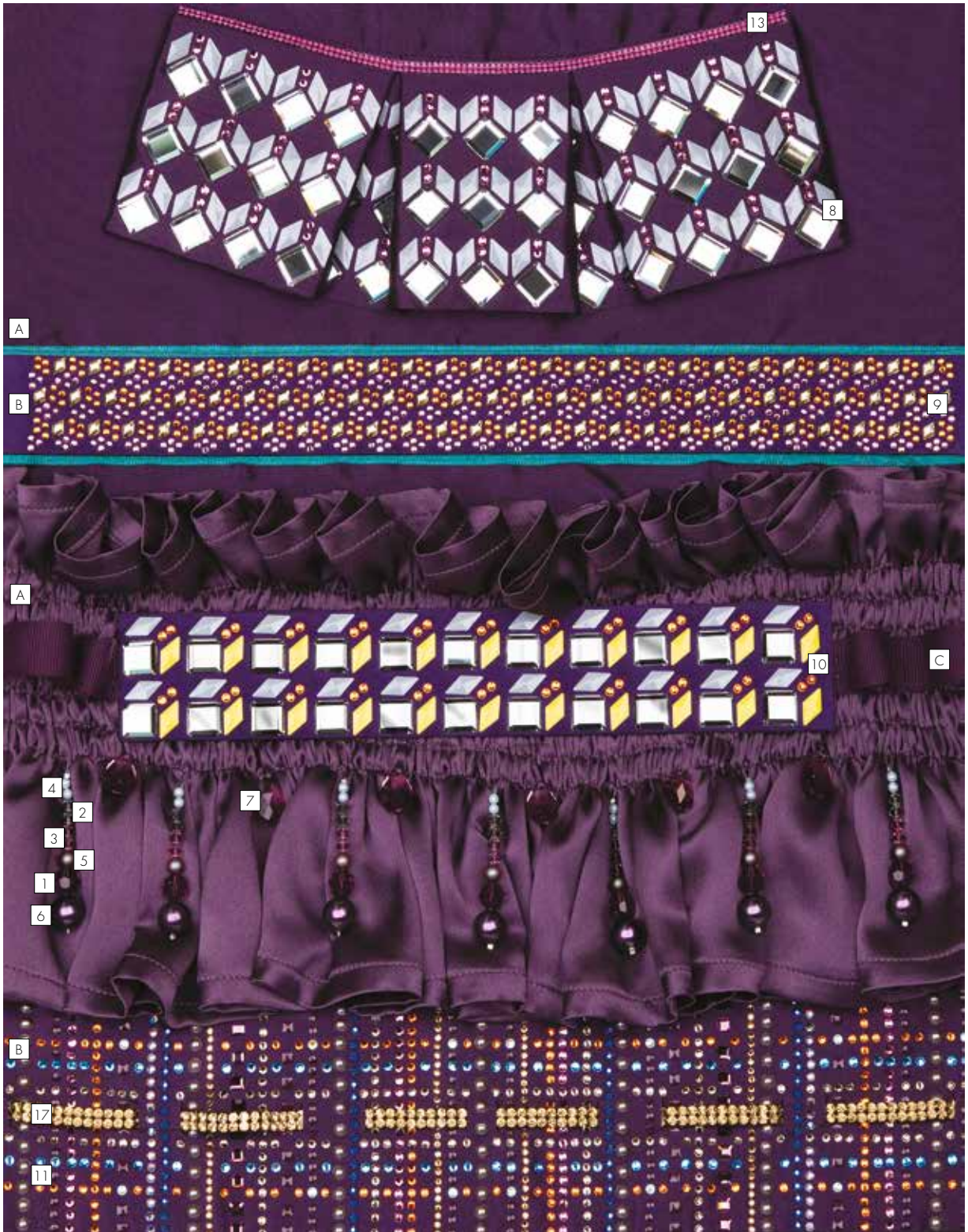
Nr.	Material Information
A	Tweed boucle
B	Nylon
C	Technical fabric
D	Alcantara ©
E	Woven ribbon
F	Raffia
G	Tulle
H	3D Print

A



Nr.	Crystal
1	4460 14 mm 001 VM F NEW
2	4460 18 mm 001 VM F NEW
3	5000 6 mm 001 MLGLD2
4	5328 4 mm 001 MLGLD2
5	6428 8 mm 001 SHIM NEW
6	925824 Transfer Special Motif (R9005/091/R5009/ 081/213AB/001SCGR/001RABDK/001METSH/ 280AB/211SHIM/249SHIM/360SHIM/243)
7	925825 Transfer Special Motif (001/001AB/001AB/ 001/001AB/001/001AB) NEW
8	925826 Transfer Special Motif (070/092/280HEM/ 001SSHA/280LTCHZ/001MOL)
9	715712 Crystal Fine Rocks Special Motif (010 234)
10	89938 Crystal Ultrafine Rocks XS Special Motif (010 001MLGLD XS) NEW

Nr.	Material Information
A	Alcantara ©

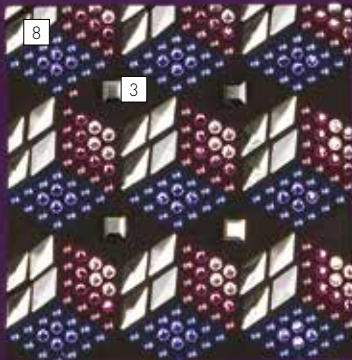
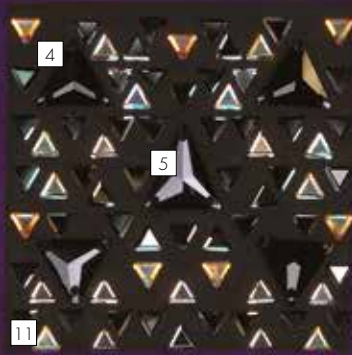
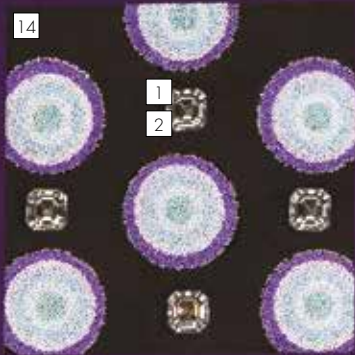


Nr.	Crystal
1	5000 8 mm 204
2	5328 4 mm 215
3	5328 4 mm 219 NEW
4	5810 4 mm 001 2026 NEW
5	5810 5 mm 001 947
6	5810 10 mm 001 943
7	6106 16 mm 219 NEW
8	925388 Transfer Special Motif (R7045/219/001) NEW
9	925389 Transfer Special Motif (219/259/001GSHA) NEW
10	925390 Transfer Special Motif (R7045/R1018/259/001)
11	925391 Transfer Special Motif (R4007/R4007/001617/ 204/001GSHA/284/259/001L110D/219/001L110S/ 539SHIM/001L141D) NEW
12	925392 Transfer Special Motif (219)* NEW
13	62030/002 S010 502
14	62010/001 S012 001L107S*
15	62010/002 S012 001L110S*
16	62010/005 S012 001L124S*
17	40001/002 081 246

*not visible

Nr.	Material Information
A	Silk
B	Alcantara ©
C	Grosgrain Ribbon
D	Double-Face Satin Mix

A



Nr.	Crystal
1	4480 10 mm 001 SINI
2	4480/S 10 mm 3PH2OH
3	5601 6 mm 001 SINIB
4	3270 16 mm 280
5	3271 18x21.1 mm 280
6	13433 001DORZ/246/001MIGLD/203/259/204/ 212/219/001L106S/246/001L111S NEW
7	13434 R2003/R9003/R1018/R7045/259/001METSH/ 001L107D/001L110S/001HFT/204 NEW
8	13435 R5003/R4007/096/R7045/086/204/296/212 NEW
9	926062 Transfer Special Motif (R9003/R3020/R2003/ R4007/R7045/001LTCH)
10	926063 Transfer Special Motif (070/R1019/R9003/ 215SHIM/001SHIM/203/204) NEW
11	926064 Transfer Special Motif (280HEM/001AB/ 280DORZ/001LTCHZ/280LTCHZ)
12	926065 Transfer Special Motif (280HEM/280LTCHZ/ 001SSHA/001GSHA/001AB/001/001AB/001AB/001) NEW
13	926066 Transfer Special Motif (001/001MOL/279/001SHIM/234)
14	618857 Graphic Fabric Print Special Motif (FP17535 022 001M500)

Nr.	Material Information
A	Alcantara ©

GENERAL WARNING

Loose crystals may present a small parts hazard to young children, particularly children under three years old. Depending on the size of the crystal and any attached material (such as glue, fabric, etc.), children may choke on, inhale, swallow, or insert the crystal into their noses. Magnetic products with crystal applications pose a particular risk of serious intestinal injury if ingested. The application techniques as stated in the Application Manual do not guarantee that crystals will not come loose or chip. For each application, the manufacturer must determine whether the product meets the relevant requirements related to small parts hazards and assess any risk it may pose, in particular to small children. Failure to follow Swarovski's care instructions may result in damage to the crystal, which could pose a risk of laceration or other harm.

Warning for Tableware

Application of loose crystals to tableware presents a potential risk of aspiration, choking, swallowing, or tooth damage should crystals become loose. To reduce this risk, crystals should never be applied to any tableware surface likely to come in contact with food or the mouth, and crystals should never be placed on any tableware intended for use by children. Tableware with crystals intended for decorative use only should be marked as such. To avoid dishwasher damage, tableware decorated with crystals should be washed by hand. The application techniques or suggestions in this manual do not guarantee that crystals will not come loose. For each application, the manufacturer must determine whether the product meets relevant requirements related to small parts hazards or use in food contact items and assess any risk it may pose to users.

The use of crystals (which may contain restricted substances deemed hazardous under local laws) and adhesives on tableware is subject to legal restrictions in specific countries. The customer is fully responsible for complying with these country-specific provisions and shall defend, indemnify, and hold Swarovski harmless from any and all third-party claims based on product liability or otherwise relating to uses of Swarovski products and waives all its own claims against Swarovski.

Notice for Application on Packaging

The use of crystal that may contain substances like lead, cadmium or hexavalent chromium, on packaging is subject to legal restrictions in specific countries including but not limited in regard to the total content of substances based on the proportion between crystal mass to the remaining weight of packaging. The customer is fully responsible for complying with these country-specific provisions and to pass on this information to his customers.

Care Instructions

Failure to follow Swarovski's care instruction may result in damage to the Swarovski product, which could pose a risk of laceration or other harm. Please be informed that all conventional laundering processes (household washing machine as well as professional dry-cleaning) have a considerable mechanical influence onto the garment, which is based on the rotation of the washing drum. The essential requirement for a safety laundering process is that the Swarovski products are properly applied without restrictions regarding the adherence of the Swarovski products. The bigger the size of the used Swarovski product is and the more Swarovski products are applied next to each other, the more a risk of damage has to be taken into consideration. Swarovski

products are made of or incorporate crystal and therefore must be handled with due care! Generally, to best protect the Swarovski products from breaking we recommend the use of a soft washing bag and to fill up the washing drum. Turning inside out before washing and selection of a gentle washing program, plus the use of mild detergents are important prerequisites to safeguard the quality of our Swarovski products. Our care instructions based on DIN EN ISO 3758 list up all Swarovski product groups as overview so that each used Swarovski product still needs to be judged in terms of its cleaning suitability for the intended purpose and finished product by the customer. Swarovski's recommendations are given according to the current state of our knowledge and Swarovski's determination of the qualification as textile application product. The customer is therefore fully responsible to determine the cleaning process applicable to the finished product, taking the Swarovski care instructions as well as those of third party materials into account. The variety of shape, cut, surface effect, size and application weight respectively amount of used Swarovski products are decisive for the determination of the suitable cleaning process. To be entirely safe customers respectively dry-cleaners usually take off Sew-on Stones, Buttons, etc. of bigger size before cleaning and re-apply them afterwards.

Unsuitable Applications

Crystals from Swarovski are intended for use in the fields of fashion, jewelry, accessories, textile products, and for interior décor. Due to their physical properties, crystals from Swarovski are unsuitable for other uses (e.g. gluing onto teeth, using crystals on or near mucous membranes, and other unsafe uses). The customer shall defend, indemnify and hold Swarovski harmless from any and all third-party claims based on product liability or otherwise relating to uses of Swarovski products purchased by the customer, and waives all its own claims.





Responsibility of User

Any oral, written, or test-based advice that Swarovski provides regarding techniques for application of its products are recommendations based on Swarovski's current knowledge and the information provided by its suppliers. Such advice does not discharge the customer from carrying out its own tests of techniques it proposes to use and their suitability for the intended application. The application, use, and processing of these techniques and products are solely the user's responsibility.






Change of Product

Swarovski reserves the right to modify the dimensions, shape, composition and concentration of components belonging to products that are referred to in this Product Information brochure. Furthermore, any applicable laws and regulations mentioned are subject to change, which is why Swarovski regularly publishes an updated version of the Product Information brochure containing facts, (application) instructions, and the current legal situation that is valid at the time of publication. References to compliance with such regulations as are stated above are based on their requirements as of the current date. Anyone seeking an in-depth understanding of the provisions should read the various laws in their entirety and/or seek advice from a legal counsel. The customer must request and observe the valid version of the Product Information brochure before (re)ordering and using the products.





EXCELLENCE, THROUGH INNOVATION AND ORIGIN

 <p>X-Cut Advanced optical measurement and high-precision manufacturing deliver premium cuts characterized by unmatched brilliance.</p>	 <p>Platinum* Pro With its new advanced foiling technique, Swarovski has set a new standard in the lifespan of crystals.</p>
 <p>Hotfix Glue The variable temperatures at which Hotfix glue can be activated enable the application of crystals on a broad range of textiles.</p>	 <p>Crystals - Made in Austria The combination of innovation with sustainability and respect for individual wellbeing means that quality is always assured.</p>

PREMIUM, BY SERVICE AND DESIGN

 <p>Design Service Throughout its global network of Design Centers, Swarovski offers exceptional service provided by the industry's best creative talent.</p>	 <p>Application Service A comprehensive range of application services means customers benefit from the extensive experience of leading international experts, as well as internal specialists.</p>
 <p>Global Service Swarovski's Global Service Network provides customers with dedicated personal assistance on a local level.</p>	 <p>Designer Editions Creative collaborations with top designers result in exclusive cuts and unique designs for Swarovski crystals.</p>
 <p>Customized Service Choose new variations by going beyond Swarovski's tremendous standard assortment of crystal components and forward integrated elements.</p>	

COMPLIANCE, WITH INTEGRITY

 <p>Advanced Crystal Swarovski's patented lead-free** formula has changed the DNA of crystal while still offering the same sparkle, dependability, and variety for which Swarovski is famous.</p>	 <p>OEKO-TEX Oeko-Tex® Standard 100 Class II (direct contact with skin) certification creates confidence in chemical safety of textile applications.</p>
 <p>Clear Regular legal monitoring of chemical requirements and reasonable testing provide customers with the comfort of trust in Swarovski's products.</p>	 <p>Compliance Service Assessments regarding substance limitations as well as compliance information and advice to support customers in complying with relevant laws, regulations, and voluntary standards.</p>

* Silver mirror coated with a platinum-colored protective layer.
** Crystal glass and all other materials containing 0.009% lead or less.

SUSTAINABILITY AT SWAROVSKI

Swarovski Crystals: Sparking Positive Change

Our Vision of "Conscious Luxury"

Responsibly sourced and crafted with care

Swarovski drives positive change for the people and the natural world it touches - when you buy and wear Swarovski, you contribute to that positive change

"Conscious Luxury" - a modern and progressive approach to business that respects the wellbeing of the planet and its people

It's in our DNA

Our founder Daniel Swarovski was a visionary pioneer

In 1985, Daniel invented a revolutionary method of crystal production based on principles of fairness to communities and the environment, which still guide our business today

Our mission is to drive positive change and to be a force for good in the world

- Swarovski has always been committed to its social and environmental responsibilities since 1895
- We produce crystal responsibly through various social and environmental programs
- Swarovski Professional is a certified member of the Responsible Jewellery Council, verifying we have responsible practices in place

ENVIRONMENTAL MANAGEMENT

- We manage our carbon and environmental impacts
- Our crystal is low impact - the overall environmental cost of crystal making is €2 per kg, calculated with respected agency Trucost
- We are committed to reducing energy consumption at our main production site in Austria by 25% by 2025
- Over a third of the energy used for crystal making is from renewable resources
- Carbon across our production sites is down 56% since 2010
- 76% of our water used in crystal making is from recycled sources
- Our chemical management aligns with the strictest of international regulations
- All Swarovski crystals are produced with our Advanced Crystal Lead-Free Formula

SOCIAL MANAGEMENT

- We own facilities in Austria and Asia where we make our crystal and jewellery, meaning we offer excellent working conditions for our work force and pay living wages in Asia
- Our Positive Production Program extends beyond auditing and compliance, aiming for positive impacts on our employees and surrounding communities
- Our Responsible Sourcing Initiative routinely audits our external suppliers against our Code of Conduct to check that factories are treating their workers responsibly
- We partnered with the Asia Disaster Preparedness Center in Thailand to strengthen our resilience as a business to climate change and cope better with periodic flooding
- We will partner with another international NGO in Thailand to tackle local challenges

CONSCIOUS DESIGN

- We believe that design can be a driving force for sustainable living
- Therefore, we engage our own inhouse designers and collaborating with external designers who use crystal to make sustainability part of design
- Through our Conscious Design Program, we work with the world's top design schools to integrate sustainability into their curricula
- Our program has provided designers and design schools with over 6 million upcycled crystal since 2015
- One X One is our exciting new initiative with Study Hall and the UN to bring science and design together

In addition to striving for sustainable business practices, Swarovski is always keen to play its part in society:

SWAROVSKI FOUNDATION

The Swarovski Foundation creates impact through awareness and action, by supporting culture and creativity, promoting human empowerment and preserving the environment, through global partnerships

SWAROVSKI WATERSCHOOL

Swarovski Waterschool has reached over 500,000 young people since 2000, seeking to empower children, families and schools everywhere to protect the world's most precious resource and become leaders in sustainable development

NOTES



Swarovski Professional is a certified member of RJC

Valid from February 2020 Sys.No. 5556658

Content is subject to change without notice. Errors and misprints excepted.

Please note, the actual products may deviate from the pictures in color and effect.

D. Swarovski Distribution GmbH, Swarovskistrasse 30, 6112 Wattens, Austria

© 2020 D. Swarovski Distribution GmbH. All rights reserved. Partial or total

publication, transmission, copy or other duplication of texts, graphics, pictures etc.

that are to be found in this publication is forbidden without special consent by

D. Swarovski Distribution GmbH.

Swarovski® is a registered trademark of Swarovski AG.

Please visit our website for contact information: swarovski-professional.com